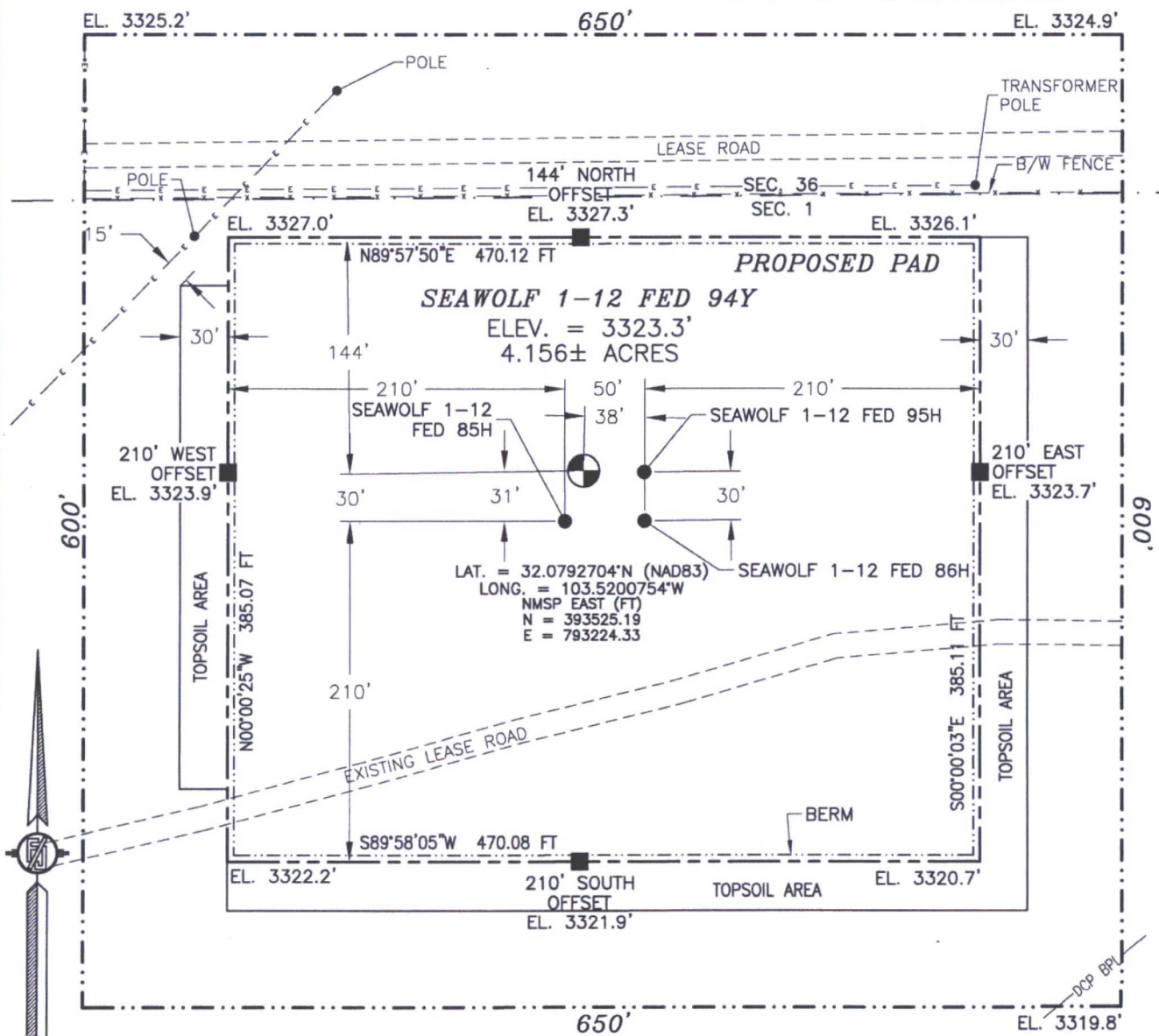


SECTION 1, TOWNSHIP 26 SOUTH, RANGE 33 EAST, N.M.P.M.
LEA COUNTY, STATE OF NEW MEXICO
SITE MAP

NOTE: LATITUDE AND LONGITUDE COORDINATES ARE SHOWN USING THE NORTH AMERICAN DATUM OF 1983 (NAD83) LISTED NEW MEXICO STATE PLANE EAST COORDINATES ARE GRID (NAD83). BASIS OF BEARING AND DISTANCES USED ARE NEW MEXICO STATE PLANE EAST COORDINATES MODIFIED TO THE SURFACE. VERTICAL DATUM NAVD88.



010 50 100 200

SCALE 1" = 100'

DIRECTIONS TO LOCATION

FROM THE INTERSECTION OF STATE HIGHWAY 128 AND CR 2 (BATTLE AXE ROAD) GO SOUTH ON CR 2 APPROX. 11.8 MILES, ROAD TURNS WEST AND FOLLOW ROAD SOUTHWEST GO BY RANCH HOUSE (GO APPROX. 2.0 MILES) BEFORE CATTLE GUARD TURN LEFT (EAST) ON EXISTING LEASE ROAD, FOLLOW ROAD 600', ROAD TURNS RIGHT (SOUTH), FOLLOW ROAD 450' SOUTH THEN ROAD TURNS LEFT (EAST), GO EAST APPROX. 300' TO THE SOUTHWEST PAD CORNER FOR THIS LOCATION.

DEVON ENERGY PRODUCTION COMPANY, L.P.

SEAWOLF 1-12 FED 94Y

LOCATED 169 FT. FROM THE NORTH LINE
AND 788 FT. FROM THE EAST LINE OF
SECTION 1, TOWNSHIP 26 SOUTH,
RANGE 33 EAST, N.M.P.M.
LEA COUNTY, STATE OF NEW MEXICO

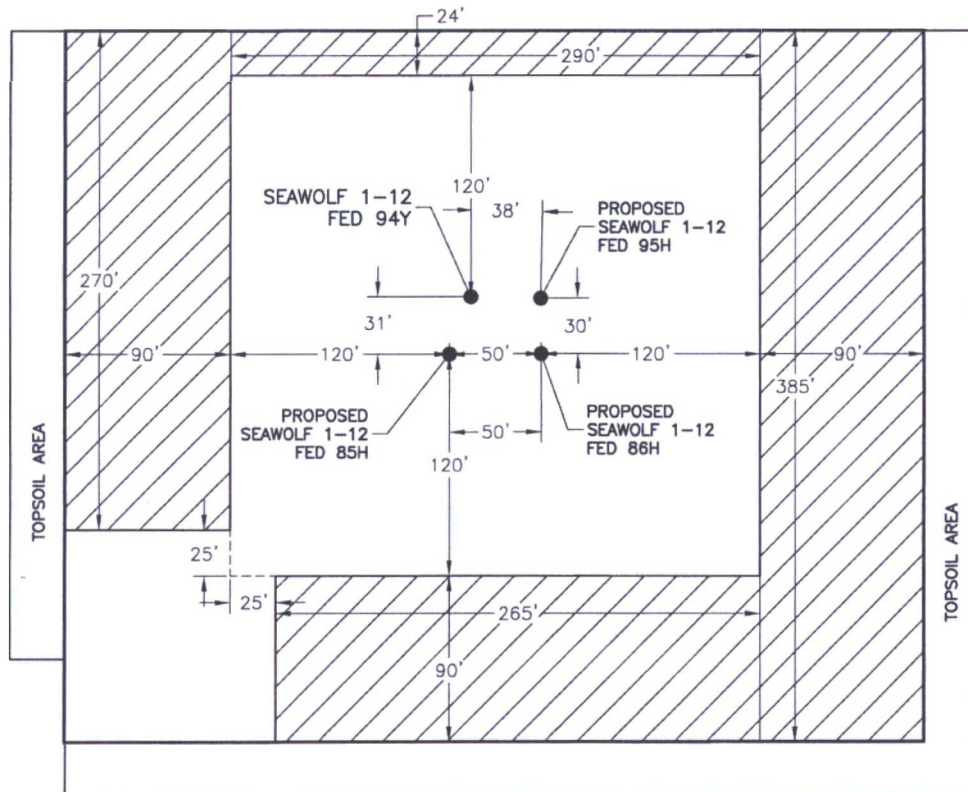
AUGUST 22, 2017

SURVEY NO. 4932F

MADRON SURVEYING, INC. 301 SOUTH CANAL
(575) 234-3341

CARLSBAD, NEW MEXICO

**PROPOSED INTERIM SITE RECLAMATION
FOR SEAWOLF 1-12 FED 94Y
SECTION 1, TOWNSHIP 26 SOUTH, RANGE 33 EAST, N.M.P.M.
LEA COUNTY, STATE OF NEW MEXICO**



 DENOTES
RECLAMATION AREA

2.062± ACRES RECLAMATION AREA



0 10 50 100 200
SCALE 1" = 100'

DEVON ENERGY PRODUCTION COMPANY, L.P.
SEAWOLF 1-12 FED 94Y
LOCATED 169 FT. FROM THE NORTH LINE
AND 788 FT. FROM THE EAST LINE OF
SECTION 1, TOWNSHIP 26 SOUTH,
RANGE 33 EAST, N.M.P.M.
LEA COUNTY, STATE OF NEW MEXICO

AUGUST 22, 2017

SURVEY NO. 4932F

MADRON SURVEYING, INC. 301 SOUTH CANAL (575) 234-3341 **CARLSBAD, NEW MEXICO**

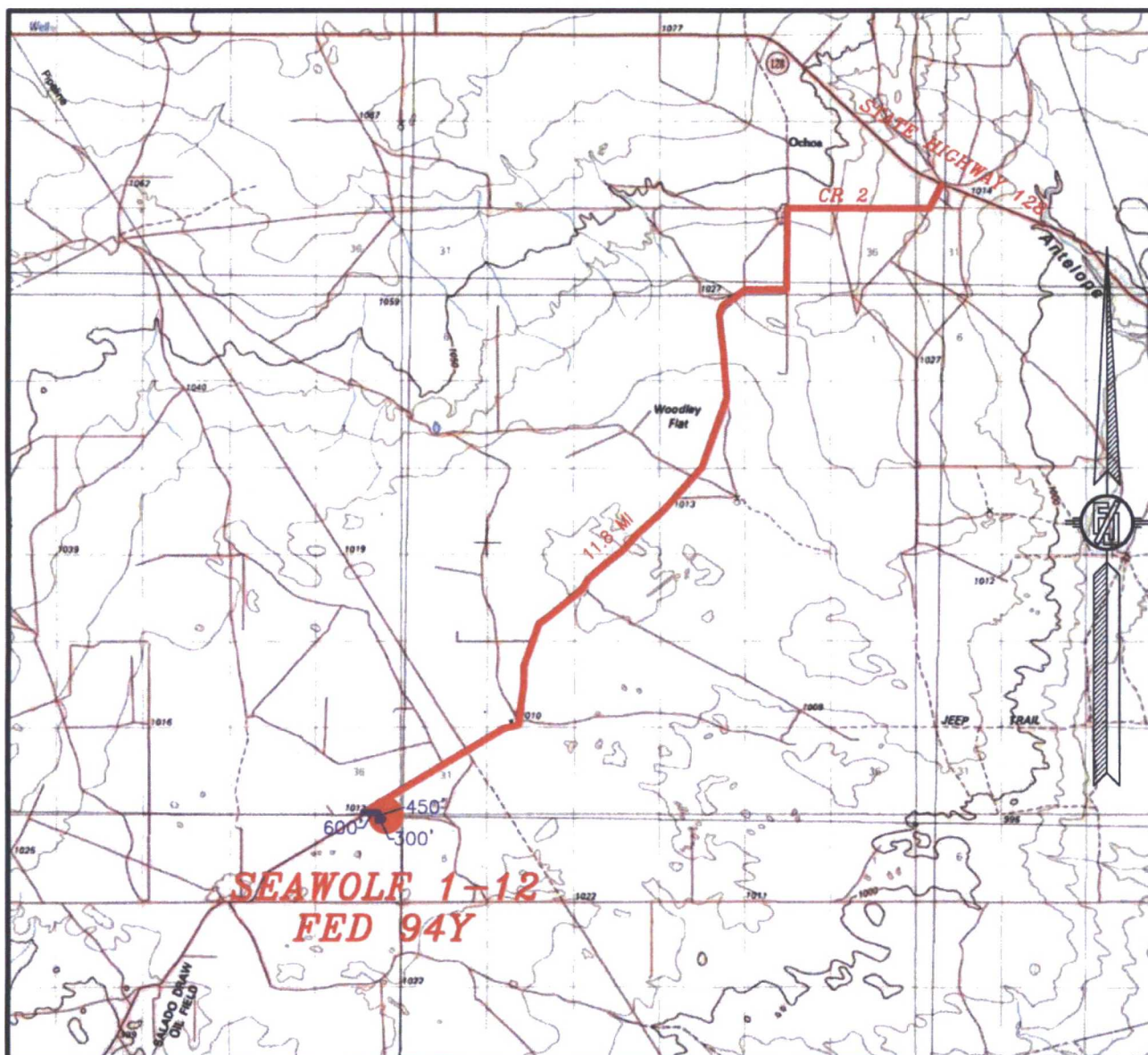
Topographic map of the SEAWOLF 1-12 area. The map shows contour lines, pipelines, and various drill holes. The central feature is labeled **SEAWOLF 1-12 FED 94Y** in large red letters. Other labels include **Gravel Pit**, **Drill Hole**, **Diamond**, **PIPELINES**, and **BM**. A red square marks a specific location near the center of the map. The map also shows contour lines with elevations such as 3317, 3320, 3324, and 3330. A north arrow is located on the right side of the map.

NOT TO SCALE

AUGUST 22, 2017

MADRON SURVEYING, INC. 301 SOUTH CANAL CARLSBAD, NEW MEXICO
(575) 234-3341

SECTION 1, TOWNSHIP 26 SOUTH, RANGE 33 EAST, N.M.P.M.
LEA COUNTY, STATE OF NEW MEXICO
VICINITY MAP



DISTANCES IN MILES

NOT TO SCALE

DEVON ENERGY PRODUCTION COMPANY, L.P.
SEAWOLF 1-12 FED 94Y

LOCATED 169 FT. FROM THE NORTH LINE
AND 788 FT. FROM THE EAST LINE OF
SECTION 1, TOWNSHIP 26 SOUTH,
RANGE 33 EAST, N.M.P.M.
LEA COUNTY, STATE OF NEW MEXICO

AUGUST 22, 2017

DIRECTIONS TO LOCATION

FROM THE INTERSECTION OF STATE HIGHWAY 128 AND CR 2 (BATTLE AXE ROAD) GO SOUTH ON CR 2 APPROX. 11.8 MILES, ROAD TURNS WEST AND FOLLOW ROAD SOUTHWEST GO BY RANCH HOUSE (GO APPROX. 2.0 MILES) BEFORE CATTLE GUARD TURN LEFT (EAST) ON EXISTING LEASE ROAD, FOLLOW ROAD 600', ROAD TURNS RIGHT (SOUTH), FOLLOW ROAD 450' SOUTH THEN ROAD TURNS LEFT (EAST), GO EAST APPROX. 300' TO THE SOUTHWEST PAD CORNER FOR THIS LOCATION.

MADRON SURVEYING, INC. 301 SOUTH CANAL (575) 234-3341

SURVEY NO. 4932F
CARLSBAD, NEW MEXICO

SECTION 1, TOWNSHIP 26 SOUTH, RANGE 33 EAST, N.M.P.M.
LEA COUNTY, STATE OF NEW MEXICO
AERIAL PHOTO



NOT TO SCALE
AERIAL PHOTO:
GOOGLE EARTH
NOVEMBER 2015

DEVON ENERGY PRODUCTION COMPANY, L.P.

SEAWOLF 1-12 FED 94Y

LOCATED 169 FT. FROM THE NORTH LINE
AND 788 FT. FROM THE EAST LINE OF
SECTION 1, TOWNSHIP 26 SOUTH,
RANGE 33 EAST, N.M.P.M.
LEA COUNTY, STATE OF NEW MEXICO

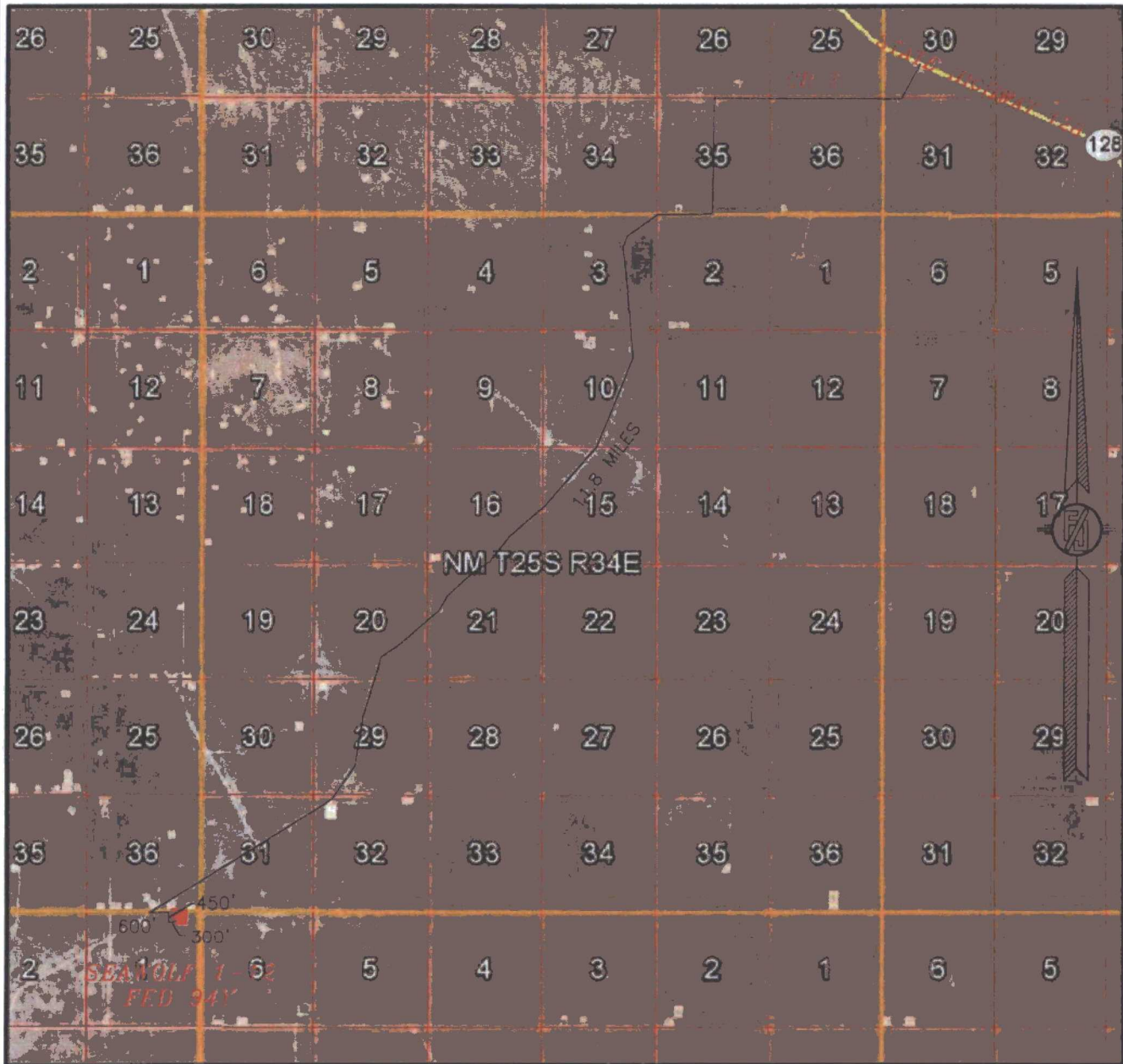
AUGUST 22, 2017

SURVEY NO. 4932F

MADRON SURVEYING, INC. 301 SOUTH CANAL
(575) 234-3341

CARLSBAD, NEW MEXICO

SECTION 1, TOWNSHIP 26 SOUTH, RANGE 33 EAST, N.M.P.M.
LEA COUNTY, STATE OF NEW MEXICO
ACCESS AERIAL ROUTE MAP



NOT TO SCALE
AERIAL PHOTO:
GOOGLE EARTH
NOVEMBER 2015

DEVON ENERGY PRODUCTION COMPANY, L.P.

SEAWOLF 1-12 FED 94Y

LOCATED 169 FT. FROM THE NORTH LINE
AND 788 FT. FROM THE EAST LINE OF
SECTION 1, TOWNSHIP 26 SOUTH,
RANGE 33 EAST, N.M.P.M.
LEA COUNTY, STATE OF NEW MEXICO

AUGUST 22, 2017

SURVEY NO. 4932F

MADRON SURVEYING, INC. 301 SOUTH CANAL (575) 234-3341 CARLSBAD, NEW MEXICO