

DISTRICT I
1625 N. French Dr., Hobbs, NM 88240
Phone: (575) 393-6161 Fax: (575) 393-0720

DISTRICT II
811 S. First St., Artesia, NM 88210
Phone: (575) 748-1283 Fax: (575) 748-0720

DISTRICT III
1000 Rio Brazos Rd., Aztec, NM 87410
Phone: (505) 334-6178 Fax: (505) 334-6170

DISTRICT IV
1220 S. St. Francis Dr., Santa Fe, NM 87505
Phone: (505) 476-3480 Fax: (505) 476-3462

State of New Mexico
Energy, Minerals & Natural Resources Department

OIL CONSERVATION DIVISION
1220 South St. Frances Dr.
Santa Fe, NM 87505

Form C-102
Revised August 1, 2011
Submit one copy to appropriate
District Office

☐ AMENDED REPORT

WELL LOCATION AND ACREAGE DEDICATION PLAT

API Number 30-025-42744	Pool Code 33813	Pool Name WC-025 G-09 S263620C; WOLFCAMP
Property Code 315162	Property Name PRIZEHOG BWZ STATE COM	Well Number 1H
OGRID No. 307600	Operator Name IMPETRO OPERATING, LLC	Elevation 2949'

Surface Location

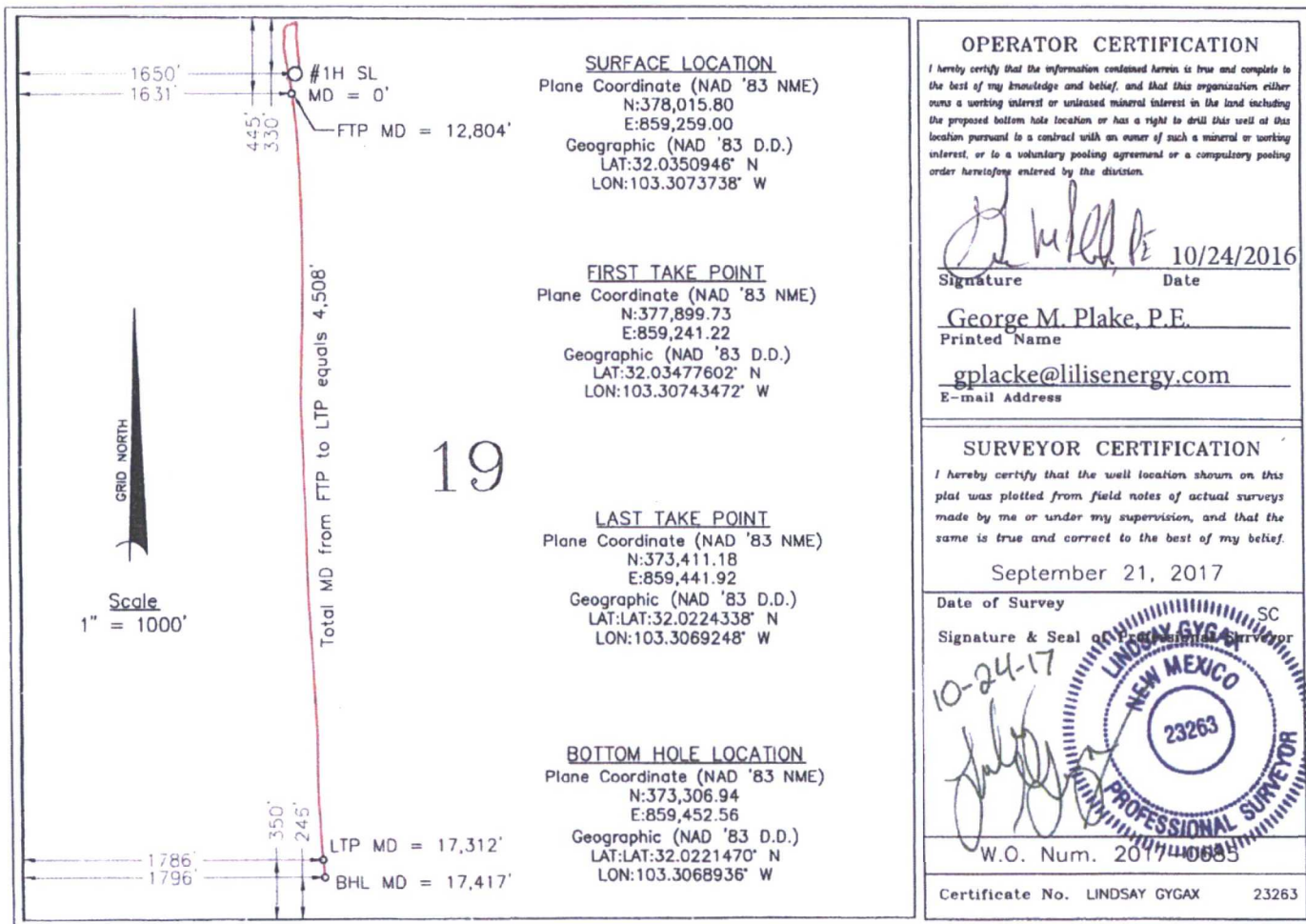
UL or lot No.	Section	Township	Range	Lot Idn	Feet from the	North/South line	Feet from the	East/West line	County
C	19	26 S	36 E	C	330	NORTH	1650	WEST	LEA

Bottom Hole Location If Different From Surface

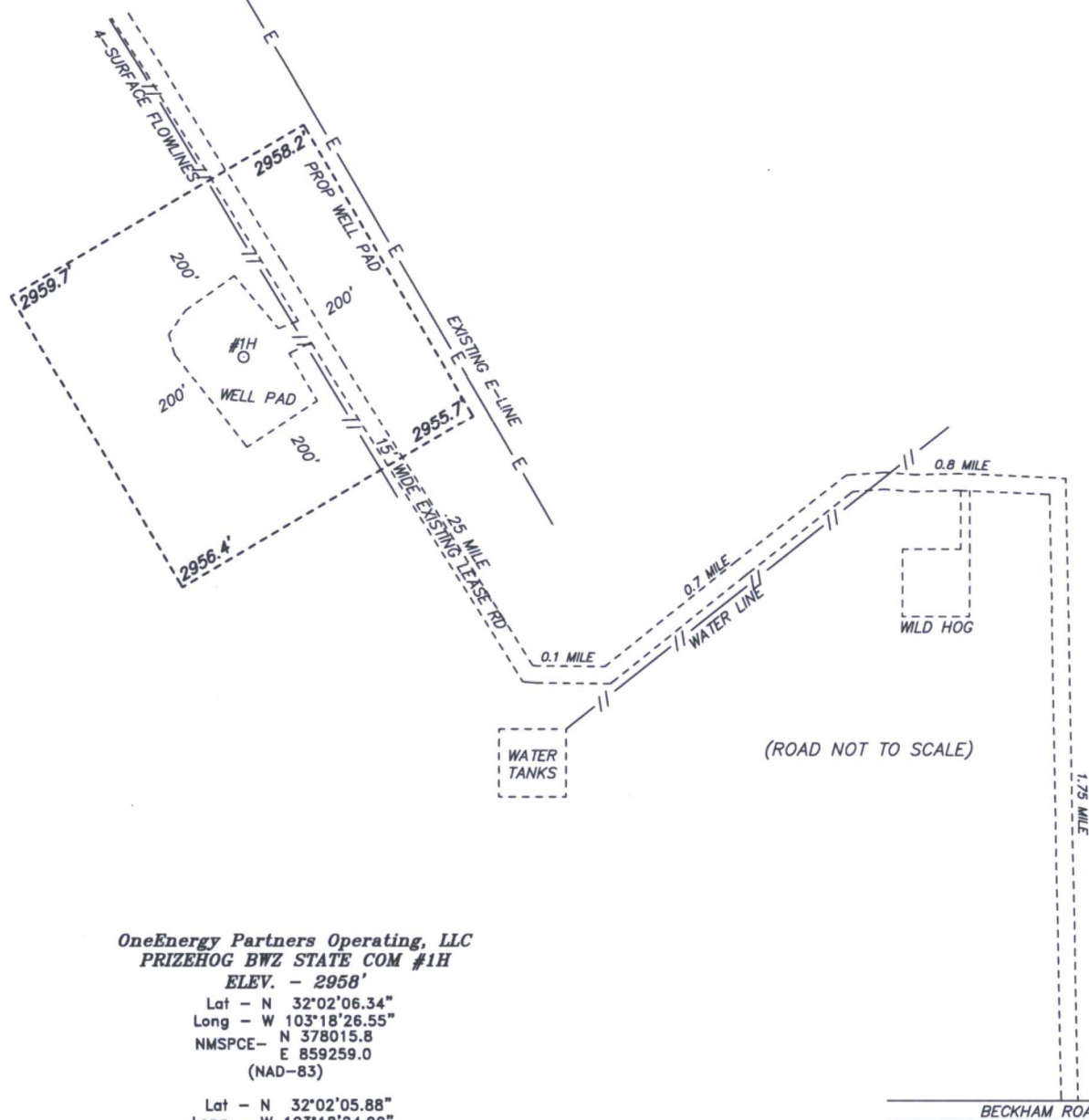
UL or lot No.	Section	Township	Range	Lot Idn	Feet from the	North/South line	Feet from the	East/West line	County
N	19	26 S	36 E	N	246	SOUTH	1796	WEST	LEA

Dedicated Acres	Joint or Infill	Consolidation Code	Order No.
160			

NO ALLOWABLE WILL BE ASSIGNED TO THIS COMPLETION UNTIL ALL INTERESTS HAVE BEEN CONSOLIDATED OR A NON-STANDARD UNIT HAS BEEN APPROVED BY THE DIVISION



SECTION 19, TOWNSHIP 26 SOUTH, RANGE 36 EAST. N.M.P.M.,
LEA COUNTY, NEW MEXICO.



OneEnergy Partners Operating, LLC
PRIZEHOG BWZ STATE COM #1H

ELEV. - 2958'

Lat - N 32°02'06.34"

Long - W 103°18'26.55"

NMSPCE- N 378015.8

E 859259.0

(NAD-83)

Lat - N 32°02'05.88"

Long - W 103°18'24.90"

NMSPCE- N 377958.3

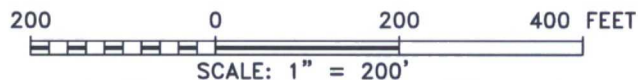
E 818070.6

(NAD-27)

Directions to Location:

FROM THE INTERSECTION OF FRYING PAN ROAD AND BECKAM RANCH ROAD GO WEST ON BECKAM RANCH ROAD FOR 1.5 MI, TURN NORTH ON LEASE ROAD 1.76 MILES, WEST 0.8 MILES, THEN SOUTHWEST FOR 0.7 MILES, THEN EAST 0.1 MILE, THENCE NORTHWEST FOR 0.25 MILE TO LOCATION.

JAL, NM IS ±9 MILES TO THE NORTHEAST OF LOCATION.



OneEnergy Partners Operating, LLC

REF: PRIZEHOG BWZ STATE COM #1H / WELL PAD TOPO

THE PRIZEHOG BWZ STATE COM #1H LOCATED 330' FROM

THE NORTH LINE AND 1650' FROM THE WEST LINE OF

SECTION 19, TOWNSHIP 26 SOUTH, RANGE 36 EAST.

N.M.P.M., LEA COUNTY, NEW MEXICO.

basin
surveys
focused on excellence
in the oilfield

P.O. Box 1786
1120 N. West County Rd.
Hobbs, New Mexico 88241
(575) 393-7316 - Office
(575) 392-2206 - Fax
basinsurveys.com

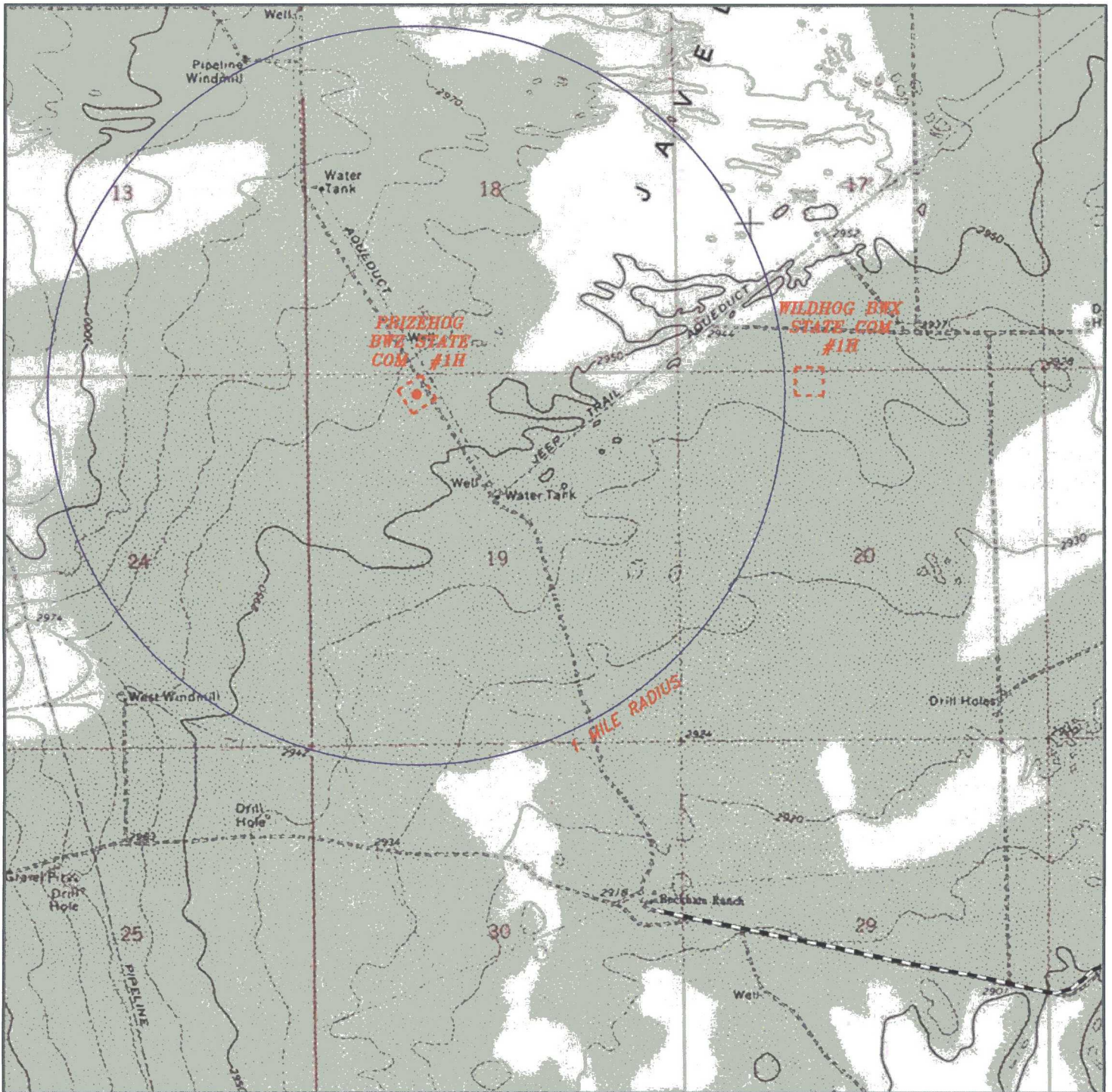
W.O. Number: 32814

Drawn By: K. GOAD

Date: 03-30-2017

Survey Date: 03-23-2017

Sheet 1 of 1 Sheets



PRIZEHOG BWZ STATE COM #1H

Located 330' FNL and 1650' FWL

Section 19, Township 26 South, Range 36 East,
N.M.P.M., Lea County, New Mexico.

basin
surveys
focused on excellence
in the oilfield

P.O. Box 1786
1120 N. West County Rd.
Hobbs, New Mexico 88241
(575) 393-7316 - Office
(575) 392-2206 - Fax
basinsurveys.com

0' 1000' 2000' 3000' 4000'
SCALE: 1" = 2000'

W.O. Number: KJG 32814

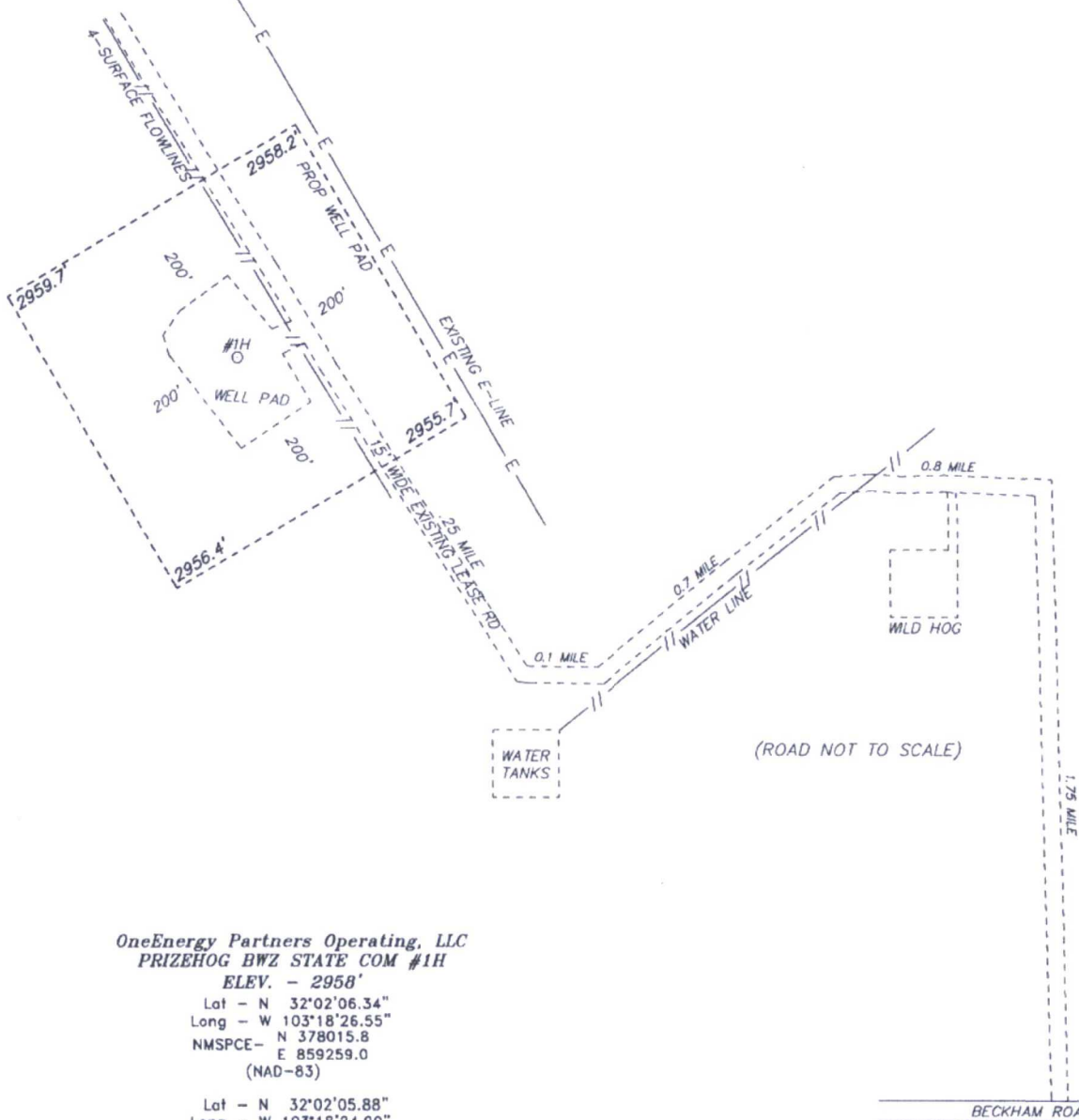
Survey Date: 03-23-2017

YELLOW TINT - USA LAND
BLUE TINT - STATE LAND
NATURAL COLOR - FEE LAND



OneEnergy
Partners
Operating, LLC

SECTION 19, TOWNSHIP 26 SOUTH, RANGE 36 EAST. N.M.P.M.,
LEA COUNTY,
NEW MEXICO.



OneEnergy Partners Operating, LLC
PRIZEHOG BWZ STATE COM #1H

ELEV. - 2958'

Lat - N 32°02'06.34"

Long - W 103°18'26.55"

NMSPCE- N 378015.8

E 859259.0

(NAD-83)

Lat - N 32°02'05.88"

Long - W 103°18'24.90"

NMSPCE- N 377958.3

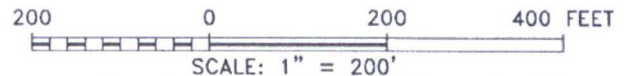
E 818070.6

(NAD-27)

JAL, NM IS ±9 MILES TO THE NORTHEAST OF LOCATION.

Directions to Location:

FROM THE INTERSECTION OF FRYING PAN ROAD AND BECKAM RANCH ROAD GO WEST ON BECKAM RANCH ROAD FOR 1.5 MI, TURN NORTH ON LEASE ROAD 1.76 MILES, WEST 0.8 MILES, THEN SOUTHWEST FOR 0.7 MILES, THEN EAST 0.1 MILE, THENCE NORTHWEST FOR 0.25 MILE TO LOCATION.



OneEnergy Partners Operating, LLC

REF: PRIZEHOG BWZ STATE COM #1H / WELL PAD TOPO

THE PRIZEHOG BWZ STATE COM #1H LOCATED 330' FROM

THE NORTH LINE AND 1650' FROM THE WEST LINE OF

SECTION 19, TOWNSHIP 26 SOUTH, RANGE 36 EAST.

N.M.P.M., LEA COUNTY, NEW MEXICO.

basin
surveys
focused on excellence
in the oilfield

P.O. Box 1786
1120 N. West County Rd.
Hobbs, New Mexico 88241
(575) 393-7316 - Office
(575) 392-2206 - Fax
basinsurveys.com

W.O. Number: 32814

Drawn By: K. GOAD

Date: 03-30-2017

Survey Date: 03-23-2017

Sheet 1 of 1 Sheets