

### 1. FORMATION TOPS

The estimated tops of important geologic markers are as follows:

FORMATION	SUB-SEA TVD	KBTVD	MD
Rustler		800	
Castile		3480	
Lamar		4900	
Bell Canyon		4930	
Cherry Canyon		5970	
Brushy Canyon		7620	
Bone Spring Limestone		9090	
Upr. Avalon		9120	
Top Bone Spring 1		10040	
Top Bone Spring 2		10700	
Top Bone Spring 3		11740	
Wolfcamp		12140	
Wolfcamp A1		12193	
Wolfcamp A2		12,523	
Lateral TD (Wolfcamp A2)		12,523	23000

### 2. ESTIMATED DEPTH OF WATER, OIL, GAS & OTHER MINERAL BEARING FORMATIONS

The estimated depths at which the top and bottom of the anticipated water, oil, gas, or other mineral bearing formations are expected to be encountered are as follows:

Substance	Formation	Depth
Deepest Expected Base of Fresh Water		700
Water	Rustler	800
Water	Bell Canyon	4930
Water	Cherry Canyon	5970
Oil/Gas	Brushy Canyon	7620
Oil/Gas	Bone Spring Limestone	9090
Oil/Gas	Upr. Avalon	9120
Oil/Gas	Top Bone Spring 1	10040
Oil/Gas	Top Bone Spring 2	10700
Oil/Gas	Top Bone Spring 3	11740
Oil/Gas	Wolfcamp	12140
Oil/Gas	Wolfcamp A1	12193
Oil/Gas	Wolfcamp A2	12,523

All shows of fresh water and minerals will be reported and protected.

### 3. BOP EQUIPMENT

Will have a minimum of a 5000 psi rig stack (see proposed schematic) for drill out below surface casing. Stack will be tested as specified in the attached testing requirements. Batch drilling of the surface, intermediate, and production will take place. A full BOP test will be performed unless approval from BLM is received otherwise.

Chevron requests a variance to use a FMC UH2 Multibowl wellhead, which will be run through the rig floor on surface casing. BOPE will be nipped up and tested after cementing surface casing. Subsequent tests will be performed as needed, not to exceed 30 days. The field report from FMC and BOP test information will be provided in a subsequent report at the end of the well. Please see the attached wellhead schematic. An installation manual has been placed on file with the BLM office and remains unchanged from previous submittal.

#### 4. CASING PROGRAM

a. The proposed casing program will be as follows:

Purpose	From	To	Hole Size	Csg Size	Weight	Grade	Thread	Condition
Surface	0'	800'	17-1/2"	13-3/8"	55 #	J55	STC	New
Intermediate	0'	11,500'	12-1/4"	9-5/8"	43.5#	HCK-L80	LTC	New
Liner	10,850'	12,300'	8-1/2"	7-5/8"	29.7 #	HCP-110	H513	New
Production (Taper String)	0'	12,500'	6-3/4"	5.5"	20#	P-110-ICY	TXP BTC	New
	12,500'	23,000'	6-3/4"	5"	18#	P-110 IC	TSH521	New

b. Casing design subject to revision based on geologic conditions encountered.

c. \*\*\*A "Worst Case" casing design for wells in a particular area is used below to calculate the Casing Safety Factors. If for any reason the casing design for a particular well requires setting casing deeper than the following "worst case" design, then the Casing Safety Factors will be recalculated & sent to the BLM prior to drilling.

d. Chevron will fill casing at a minimum of every 20 jts (840') while running for intermediate and production casing in order to maintain collapse SF.

#### SF Calculations based on the following "Worst Case" casing design:

Surface Casing: 850'  
Intermediate Casing: 11,200' TVD  
Production Casing: 23,000' MD/12,750' TVD (10,300' VS @ 90 deg inc)

Casing String	Min SF Burst	Min SF Collapse	Min SF Tension	Min SF Tri-Axial
Surface	1.36	3.12	3.17	1.70
Intermediate	1.12	1.44	1.93	1.37
Liner	1.69	5.36	2.50	2.09
Production	1.11	1.23	1.97	1.37

Min SF is the smallest of a group of safety factors that include the following considerations:

	Surf	Int	Liner	Prod
<b>Burst Design</b>				
Pressure Test- Surface, Int, Prod Csg P external: Water P internal: Test psi + next section heaviest mud in csg	X	X	X	X
Displace to Gas- Surf Csg P external: Water P internal: Dry Gas from Next Csg Point	X			
Frac at Shoe, Gas to Surf- Int Csg P external: Water P internal: Dry Gas, 13 ppg Frac Gradient		X	X	
Stimulation (Frac) Pressures- Prod Csg P external: Water P internal: Max inj pressure w/ heaviest injected fluid				X
Tubing leak- Prod Csg (packer at KOP) P external: Water P internal: Leak just below surf, 8.7 ppg packer fluid				X
<b>Collapse Design</b>				
Full Evacuation P external: Water gradient in cement, mud above TOC P internal: none	X	X	X	X
Cementing- Surf, Int, Prod Csg P external: Wet cement P internal: water	X	X	X	X
<b>Tension Design</b>				
100k lb overpull	X	X	X	X

### 5. CEMENTING PROGRAM

Slurry	Type	Top	Bottom	Weight	Yield	%Excess	Sacks	Water
Surface				(ppg)	(sx/cu ft)	Open Hole		gal/sk
Tail	Class C	0'	800'	14.8	1.33	50	650	6.57
Intermediate								
Stage 2 Lead	Class C	0'	4570	11.9	2.39	100	1070	13.46
Stage 2 Tail	Class C	4570	4870	14.8	1.33	25	89	6.35
Stage 1 Lead	50:50 Poz Class C	4,870'	10,650'	11.9	2.21	25	1024	12.18
Stage 1 Tail	Class H	10,650'	11,150'	15.6	1.22	25	184	5.37
Liner								
Tail	Class H	10,850'	12,300'	15.6	1.22	17	123	5.34
Production								
Tail	Acid Soluble	10,350'	23,000'	15.6	1.2	17	1362	5.05

1. Final cement volumes will be determined by caliper.
2. Surface casing shall have at least one centralizer installed on each of the bottom three joints starting with the shoe joint.
3. Production casing will have one horizontal type centralizer on every joint for the first 1000' from TD, then every other joint to EOB, and then every third joint to KOP. Bowspring type centralizers will be run from KOP to intermediate casing.

## 6. MUD PROGRAM

From	To	Type	Weight	F. Vis	Filtrate
0'	800'	Spud Mud	8.3 - 8.7	32 - 34	NC - NC
800'	11,150'	Oil Based Mud	8.7-9.2	28 - 30	25-30
11,150'	12,300'	Oil Based Mud	9.5-11.0	70 - 75	25 - 30
12,300'	23,000'	Oil Based Mud	9.5-11.0	70 - 75	25 - 30

A closed system will be utilized consisting of above ground steel tanks. All wastes accumulated during drilling operations will be contained in a portable trash cage and removed from location and deposited in an approved sanitary landfill. Sanitary wastes will be contained in a chemical porta-toilet and then hauled to an approved sanitary landfill.

All fluids and cuttings will be disposed of in accordance with New Mexico Oil Conservation Division rules and regulations.

A mud test shall be performed every 24 hours after mudding up to determine, as applicable: density, viscosity, gel strength, filtration, and pH.

Visual mud monitoring equipment shall be in place to detect volume changes indicating loss or gain of circulating fluid volume. When abnormal pressures are anticipated -- a pit volume totalizer (PVT), stroke counter, and flow sensor will be used to detect volume changes indicating loss or gain of circulating fluid volume.

A weighting agent and lost circulating material (LCM) will be onsite to mitigate pressure or lost circulation as hole conditions dictate.

## 7. TESTING, LOGGING, AND CORING

The anticipated type and amount of testing, logging, and coring are as follows:

- Drill stem tests are not planned.
- The logging program will be as follows:

TYPE	Logs	Interval	Timing	Vendor
Mudlogs	2 man mudlog	Int Csg to TD	Drillout of Int Csg	TBD
LWD	MWD Gamma	Int. and Prod. Hole	While Drilling	TBD

- Conventional whole core samples are not planned.
- A Directional Survey will be run.

## 8. ABNORMAL PRESSURES AND HYDROGEN SULFIDE

- No abnormal pressures or temperatures are expected. Estimated BHP is: 4500 psi
- Hydrogen sulfide gas is not anticipated. An H2S Contingency plan is attached with this APD in the event that H2S is encountered



ContiTech

## Hose Data Sheet

CRI Order No.	538332
Customer	ContiTech Oil & Marine Corp.
Customer Order No	4500412631 CBC544771, CBC544769, CBC544767, CBC544763, CBC544768, CBC544745, CBC544744, CBC544746
Item No.	1
Hose Type	Flexible Hose
Standard	API SPEC 16 C
Inside dia in inches	3
Length	45 ft
Type of coupling one end	FLANGE 4.1/16" 10KPSI API SPEC 17D SV SWIVEL FLANGE SOURC/W BX155 ST/ST INLAID R.GR.
Type of coupling other end	FLANGE 4.1/16" 10KPSI API SPEC 17D SV SWIVEL FLANGE SOURC/W BX155 ST/ST INLAID R.GR.
H2S service NACE MR0175	Yes
Working Pressure	10 000 psi
Design Pressure	10 000 psi
Test Pressure	15 000 psi
Safety Factor	2,25
Marking	USUAL PHOENIX
Cover	NOT FIRE RESISTANT
Outside protection	St. steel outer wrap
Internal stripwound tube	No
Lining	OIL + GAS RESISTANT SOUR
Safety clamp	Yes
Lifting collar	Yes
Element C	Yes
Safety chain	Yes
Safety wire rope	No
Max.design temperature [°C]	100
Min.design temperature [°C]	-20
Min. Bend Radius operating [m]	0,90
Min. Bend Radius storage [m]	0,90
Electrical continuity	The Hose is electrically continuous
Type of packing	WOODEN CRATE ISPM-15



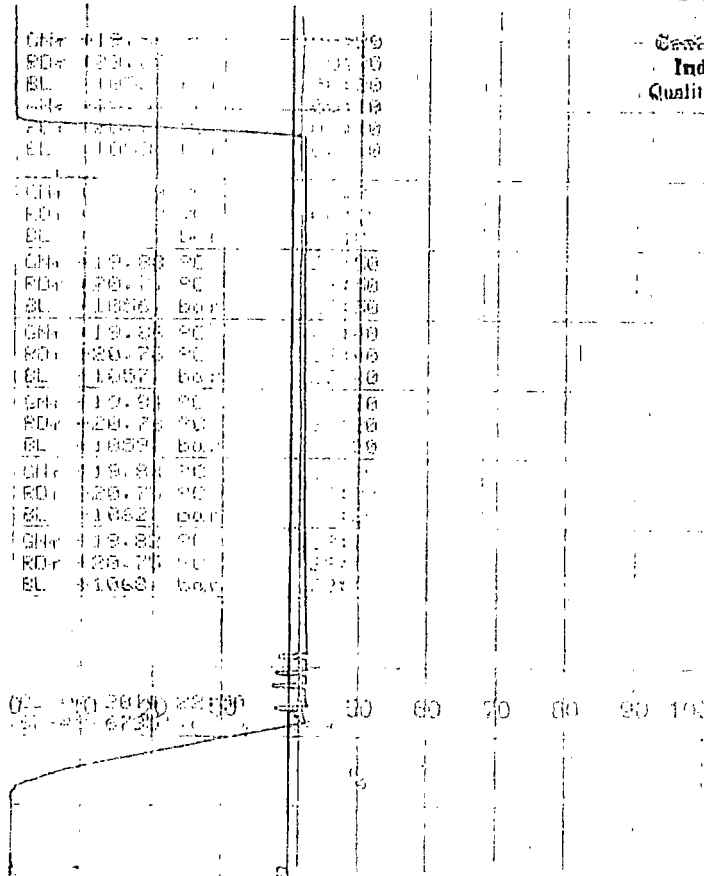
ContiTech

CONTITECH RUBBER  
Industrial Kft.

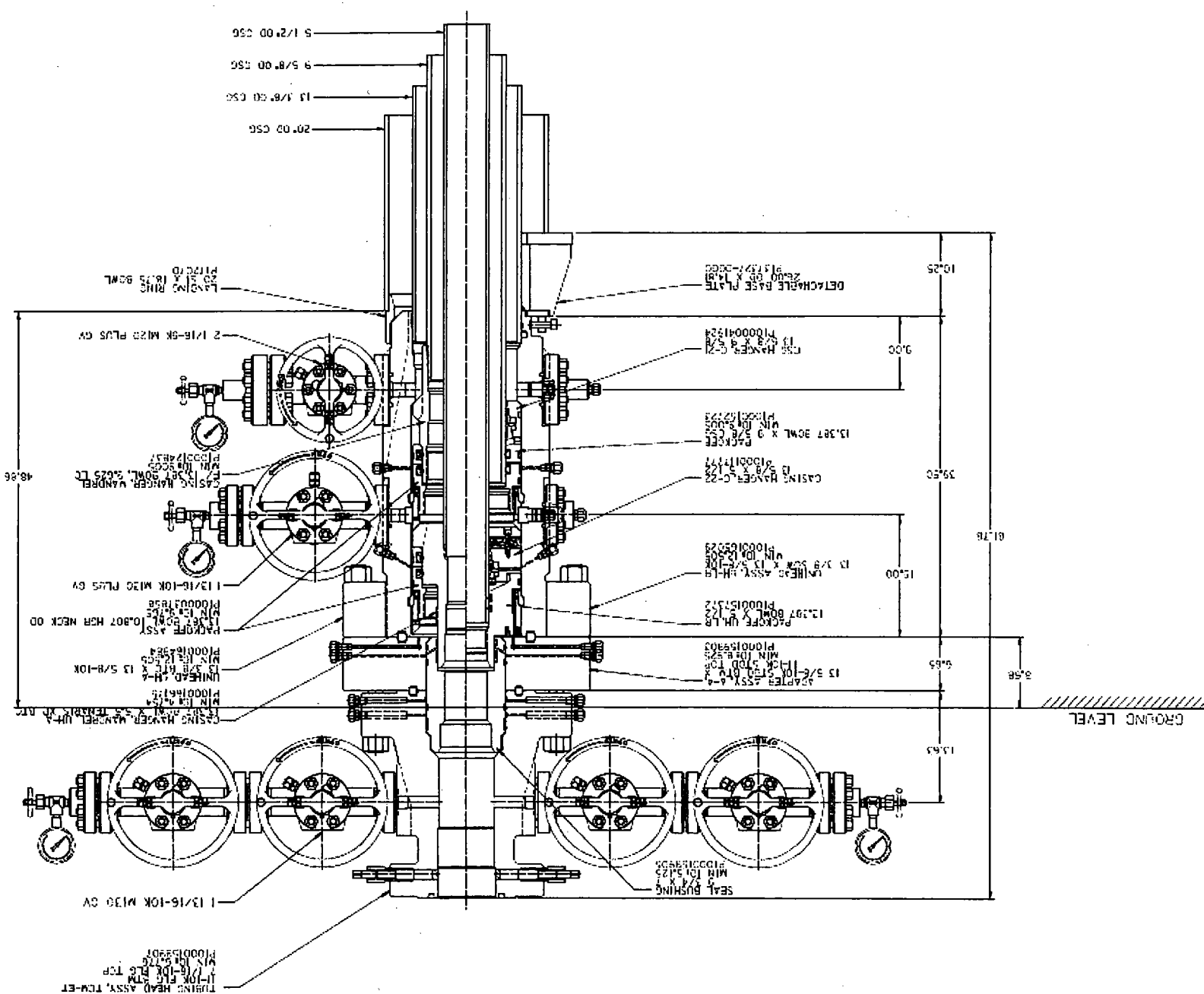
No: QC-DB- 231/ 2014

Page: 10 / 119

QUALITY CONTROL INSPECTION AND TEST CERTIFICATE				CERT. N°: 594	
PURCHASER: ContiTech Oil & Marine Corp.				P.O. N°: 4500412631	
CONTITECH ORDER N°: 538332		HOSE TYPE: 3" ID Choke & Kill Hose			
HOSE SERIAL N°: 67349		NOMINAL / ACTUAL LENGTH: 13,72 m / 13,85 m			
W.P. 68,9 MPa 10000 psi		T.P. 103,4 MPa 15000 psi		Duration: 60 min.	
Pressure test with water at ambient temperature					
See attachment. ( 1 page )					
↑ 10 mm = 10 Min. → 10 mm = 25 MPa					
COUPLINGS Type		Serial N°		Quality	
3" coupling with 4 1/16" 10K API Swivel Flange end Hub		1435 1436		AISI 4130 AISI 4130 AISI 4130	
				Heat N° A1258U 034939 A1045N	
Not Designed For Well Testing				API Spec 16 C	
Tag No.: 66 – 1198				Temperature rate: "B"	
All metal parts are flawless					
WE CERTIFY THAT THE ABOVE HOSE HAS BEEN MANUFACTURED IN ACCORDANCE WITH THE TERMS OF THE ORDER INSPECTED AND PRESSURE TESTED AS ABOVE WITH SATISFACTORY RESULT.					
STATEMENT OF CONFORMITY: We hereby certify that the above items/equipment supplied by us are in conformity with the terms, conditions and specifications of the above Purchaser Order and that these items/equipment were fabricated inspected and tested in accordance with the referenced standards, codes and specifications and meet the relevant acceptance criteria and design requirements.					
Date:  03. April 2014.		Inspector		Quality Control ContiTech Rubber Industrial Kft. Quality Control Dept. <i>(Signature)</i>	



*Belonging to*  
 SavitTech Rubber  
 Industrial Kkt.  
 Quality Control Dept.  
 (1)





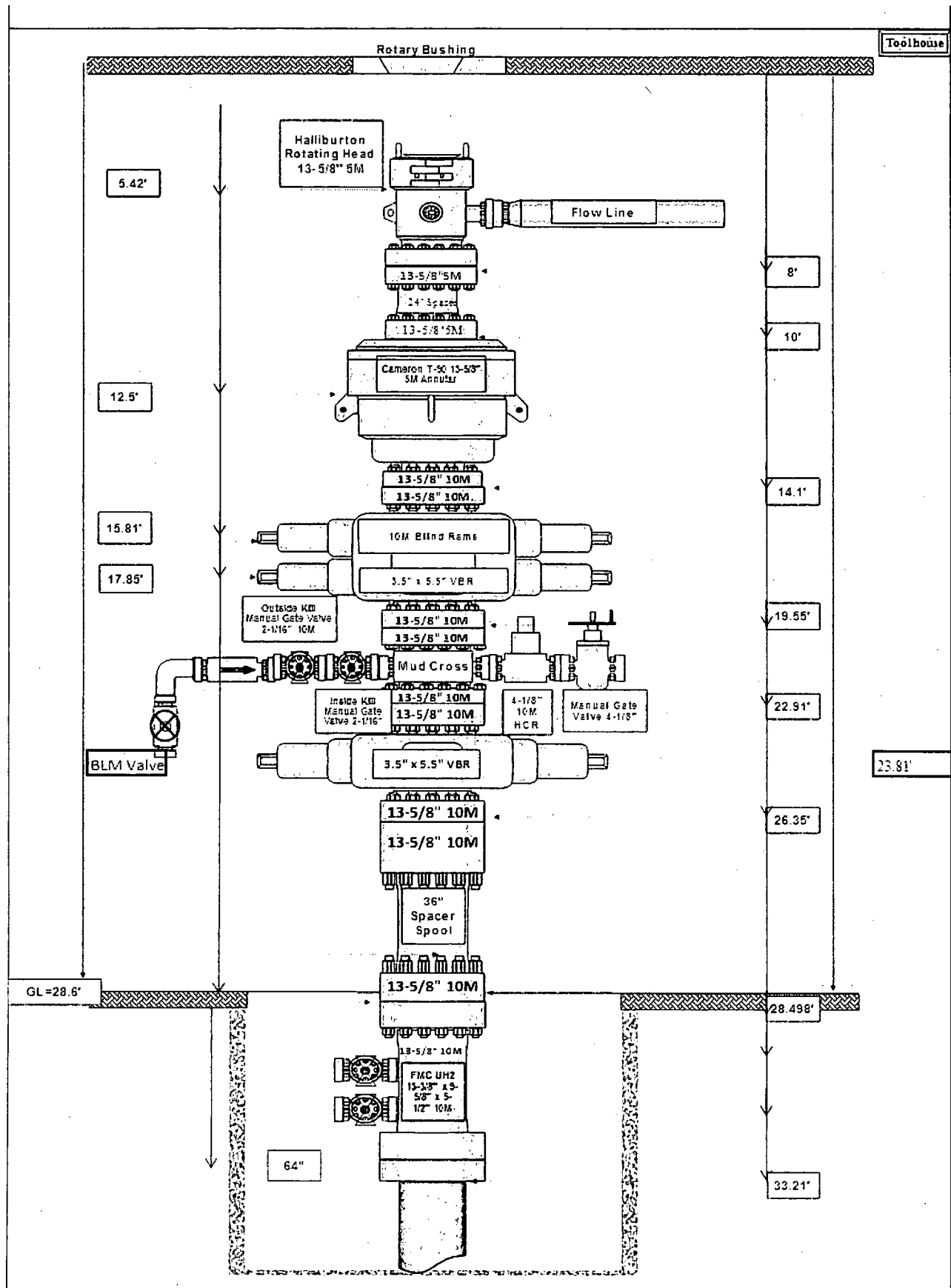


Diagram A

# CHOKE MANIFOLD SCHEMATIC

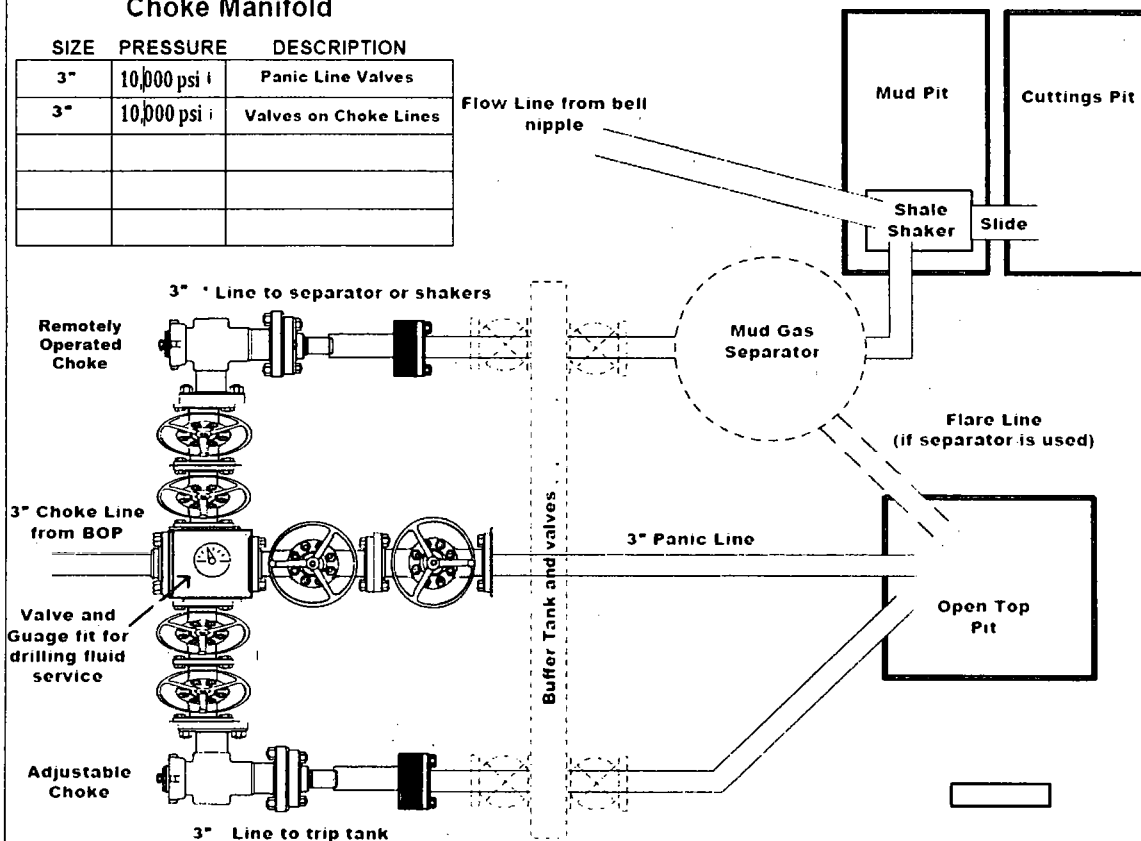
## Minimum Requirements

OPERATION : Wolfcamp A wells

Minimum System  
Pressure Rating : 10,000 psi

## Choke Manifold

SIZE	PRESSURE	DESCRIPTION
3"	10,000 psi	Panic Line Valves
3"	10,000 psi	Valves on Choke Lines



## Installation Checklist

The following item must be verified and checked off prior to pressure testing of BOP equipment.

- ☐ The installed BOP equipment meets at least the minimum requirements (rating, type, size, configuration) as shown on this schematic. Components may be substituted for equivalent equipment rated to higher pressures. Additional components may be put into place as long as they meet or exceed the minimum pressure rating of the system.
- ☐ Adjustable Chokes may be Remotely Operated but will have backup hand pump for hydraulic actuation in case of loss of rig air pressure or power.
- ☐ Flare and Panic lines will terminate a minimum of 150' from the wellhead. These lines will terminate at a location as per approved APD.
- ☐ The choke line, kill line, and choke manifold lines will be straight unless turns use tee blocks or are targeted with running tool, and will be anchored to prevent whip and reduce vibration. This excludes the line between mud gas separator and shale shaker.
- ☐ All valves (except chokes) on choke line, kill line, and choke manifold will be full opening and will allow straight through flow. This excludes any valves between mud gas separator and shale shakers.
- ☐ All manual valves will have hand wheels installed.
- ☐ If used, flare system will have effective method for ignition
- ☐ All connections will be flanged, welded, or clamped (no threaded connections like hammer unions)
- ☐ If buffer tank is used, a valve will be used on all lines at any entry or exit point to or from the buffer tank.

After Installation Checklist is complete, fill out the information below and email to Superintendent and Drilling Engineer

Wellname: \_\_\_\_\_

Representative: \_\_\_\_\_

Date: \_\_\_\_\_

Diagram B

# 10M BLOWOUT PREVENTER SCHEMATIC

Minimum Requirements

**OPERATION:** Wolfcamp Wells in Salado Draw

**Minimum System Pressure Rating: 10,000 PSI**

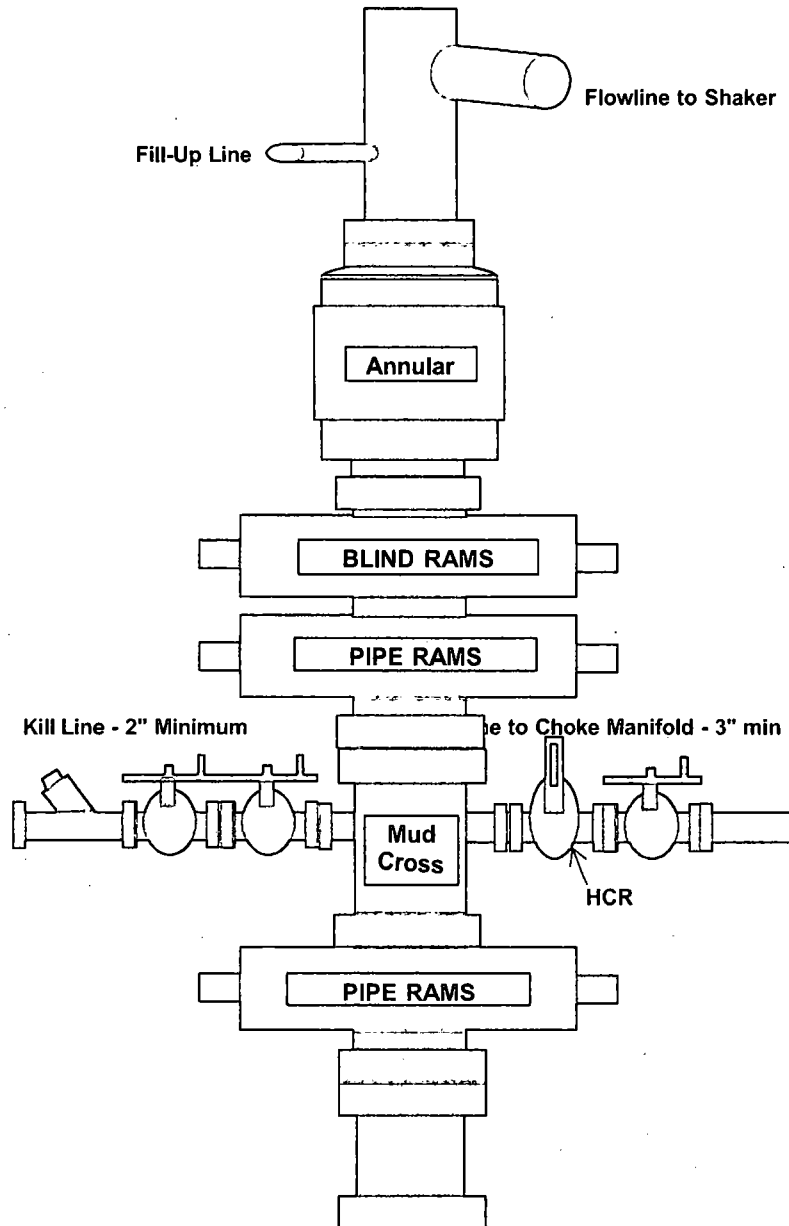


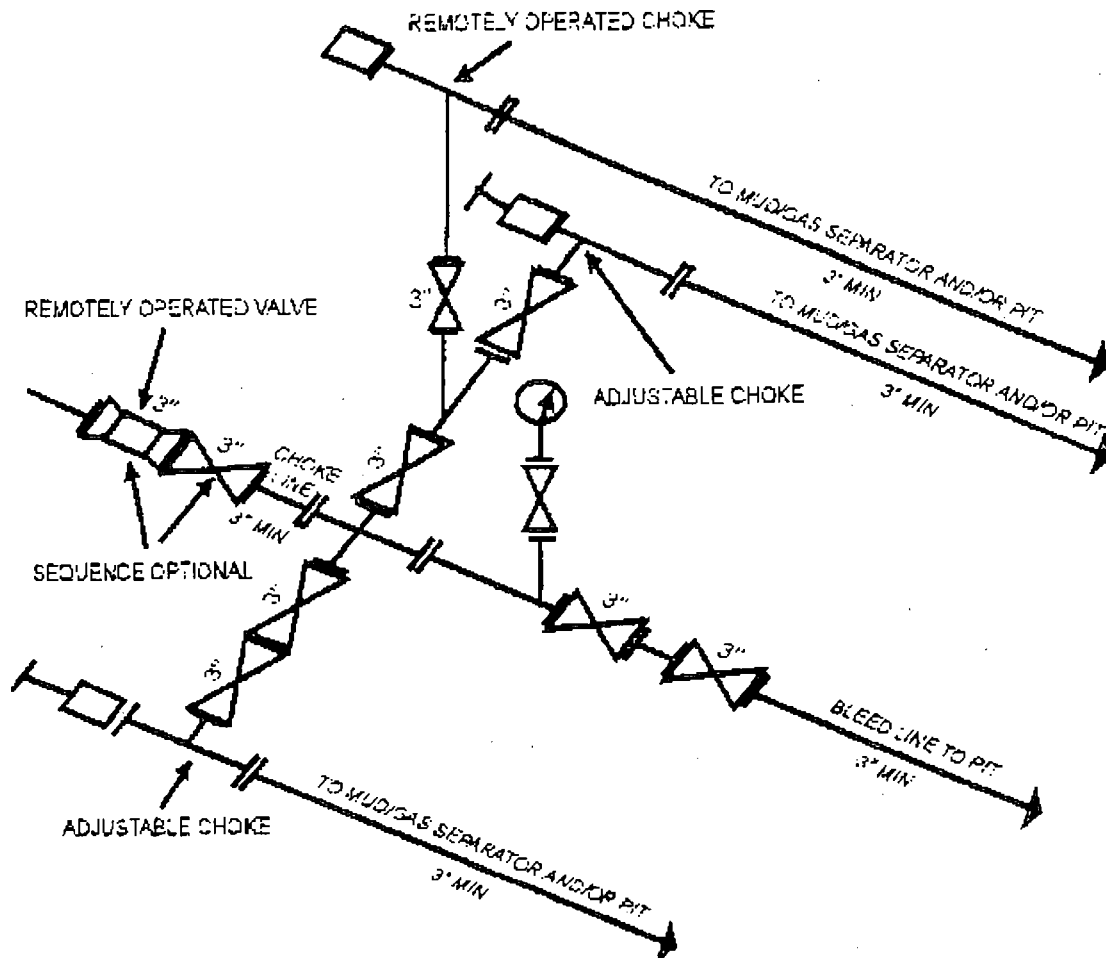
Diagram C

# 10M Choke Manifold SCHEMATIC

Minimum Requirements

OPERATION: Production and Open Hole Sections

Minimum System Pressure Rating: 10,000 PSI



10M AND 15M CHOKE MANIFOLD EQUIPMENT - CONFIGURATION OF CHOKES MAY VARY  
[53 FR 49661, Dec. 9, 1988 and 54 FR 39528, Sept. 27, 1989]

Diagram D