

District I
1625 N. French Dr., Hobbs, NM 88240
Phone (575) 393-6161 Fax (575) 393-0720
District II
811 S. First St., Artesia, NM 88210
Phone (575) 748-1283 Fax (575) 748-9720
District III
1000 Rio Brazos Road, Aztec, NM 87410
Phone (505) 334-6178 Fax (505) 334-6170
District IV
1220 S. St. Francis Dr., Santa Fe, NM 87505
Phone (505) 476-3460 Fax (505) 476-3462

State of New Mexico
Energy, Minerals & Natural Resources Department
OIL CONSERVATION DIVISION
1220 South St. Francis Dr.
Santa Fe, NM 87505

Form C-102
Revised August 1, 2011
Submit one copy to appropriate
District Office
☒ AMENDED REPORT

WELL LOCATION AND ACREAGE DEDICATION PLAT

¹ API Number 30-025- 43449		² Pool Code 96556	³ Pool Name Cotton Draw; Bone Spring, East
⁴ Property Code 314752	⁵ Property Name REBEL 20 FED		⁶ Well Number 6Y
⁷ OGRID No. 6137	⁸ Operator Name DEVON ENERGY PRODUCTION COMPANY, L.P.		⁹ Elevation 3563.9

¹⁰ Surface Location

UL or lot no.	Section	Township	Range	Lot Idn	Feet from the	North/South line	Feet from the	East/West line	County
C	20	24 S	32 E		250	NORTH	1970	WEST	LEA

¹¹ Bottom Hole Location If Different From Surface

UL or lot no.	Section	Township	Range	Lot Idn	Feet from the	North/South line	Feet from the	East/West line	County
N	20	24 S	32 E		330	SOUTH	1980	WEST	LEA

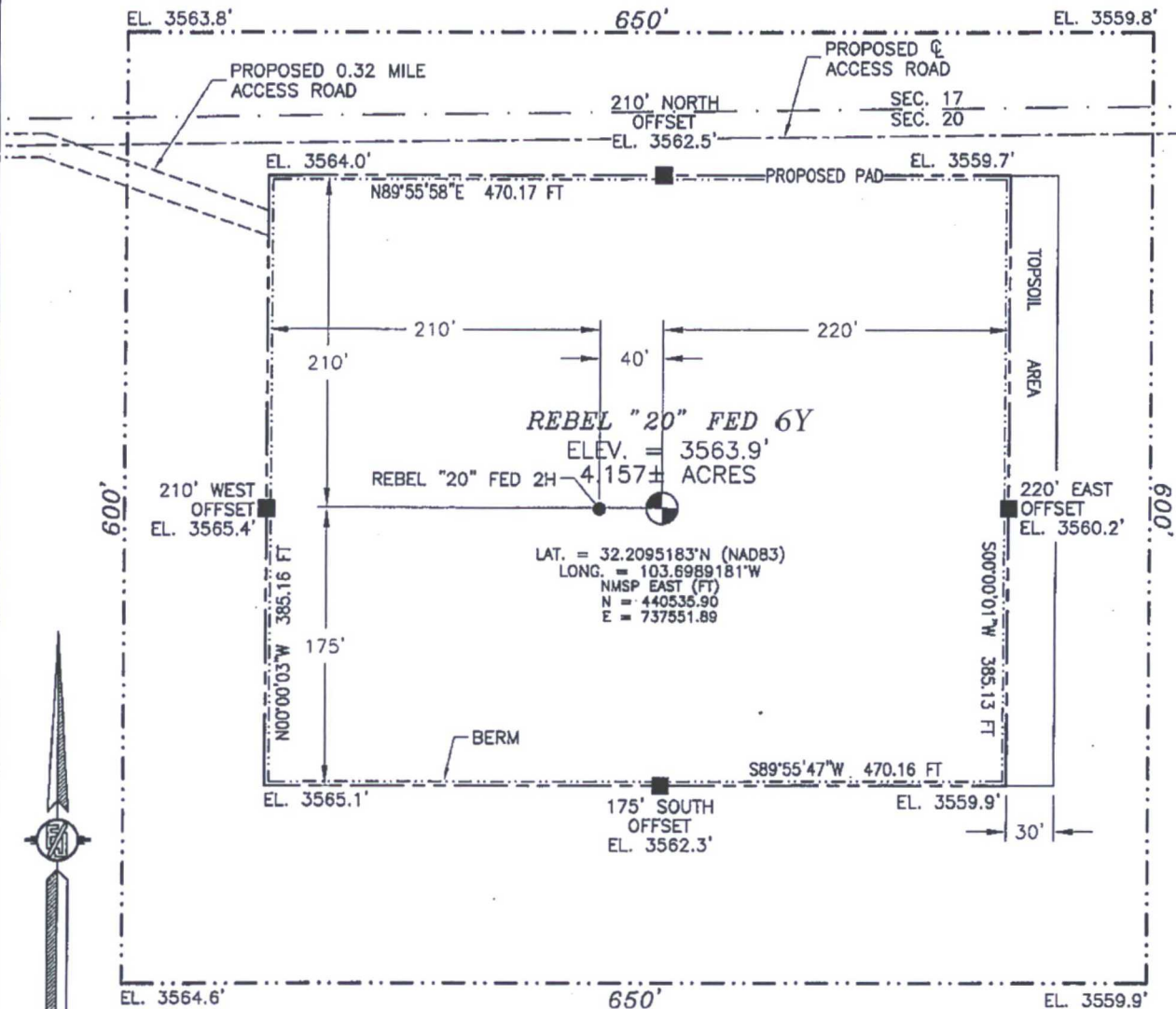
¹² Dedicated Acres 160.00	¹³ Joint or Infill	¹⁴ Consolidation Code	¹⁵ Order No.
--	-------------------------------	----------------------------------	-------------------------

No allowable will be assigned to this completion until all interests have been consolidated or a non-standard unit has been approved by the division.

<p>N 89°19'12"E 2643.68 FT</p> <p>N 89°25'24"E 2641.68 FT</p> <p>SW CORNER SEC. 20 LAT. = 32.2101731°N LONG. = 103.7052886°W NMSP EAST (FT) N = 440762.51 E = 735580.15</p> <p>DNF</p> <p>NOTE: LATITUDE AND LONGITUDE COORDINATES ARE SHOWN USING THE NORTH AMERICAN DATUM OF 1983 (NAD83). LISTED NEW MEXICO STATE PLANE EAST COORDINATES ARE GRID (NAD83). BASIS OF BEARING AND DISTANCES USED ARE NEW MEXICO STATE PLANE EAST COORDINATES MODIFIED TO THE SURFACE.</p> <p>SW CORNER SEC. 20 LAT. = 32.1956460°N LONG. = 103.7052343°W NMSP EAST (FT) N = 435477.84 E = 735627.83</p> <p>S 89°18'59"W 2634.08 FT</p>		<p>N 89°25'24"E 2641.68 FT</p> <p>NE CORNER SEC. 20 LAT. = 32.2102463°N LONG. = 103.6882040°W NMSP EAST (FT) N = 440820.46 E = 740864.04</p> <p>REBEL "20" FED 6Y ELEV. = 3563.9' LAT. = 32.2095183°N (NAD83) LONG. = 103.6989181°W NMSP EAST (FT) N = 440535.90 E = 737551.89</p> <p>NE CORNER SEC. 20 LAT. = 32.2029993°N LONG. = 103.6881898°W NMSP EAST (FT) N = 438184.10 E = 740884.26</p> <p>SE CORNER SEC. 20 LAT. = 32.1957312°N LONG. = 103.6881767°W NMSP EAST (FT) N = 435540.07 E = 740904.17</p> <p>S 89°19'56"W 2643.77 FT</p>		<p>¹⁶ OPERATOR CERTIFICATION</p> <p>I hereby certify that the information contained herein is true and complete to the best of my knowledge and belief, and that this organization either owns a working interest or undivided mineral interest in the land including the proposed bottom hole location or has a right to drill this well at this location pursuant to a contract with an owner of such a mineral or working interest, or to a voluntary pooling agreement or a compulsory pooling order heretofore entered by the division.</p> <p><u>Linda Good</u> <u>3/31/16</u> Signature Date</p> <p><u>Linda Good</u> Printed Name</p> <p><u>linda.good@dvn.com</u> E-mail Address</p> <p>¹⁷ SURVEYOR CERTIFICATION</p> <p>I hereby certify that the well location shown on this plat was plotted from field notes of actual surveys made by me or under my supervision, and that the same is true and correct to the best of my belief.</p> <p><u>FILMON F. JARAMILLO</u> FEBRUARY 8, 2016 Date of Survey</p> <p><u>Filmon F. Jaramillo</u> Signature and Seal of Professional Surveyor</p> <p>Certificate Number: <u>FILMON F. JARAMILLO, PLS 12797</u> SURVEY NO. 3834B</p>
<p>1970'</p> <p>250'</p> <p>SURFACE LOCATION</p> <p>1980'</p> <p>330'</p> <p>BOTTOM OF HOLE</p>		<p>500'26'22"E 2637.01 FT</p> <p>500'25'54"E 2644.68 FT</p>		

SECTION 20, TOWNSHIP 24 SOUTH, RANGE 32 EAST, N.M.P.M.
LEA COUNTY, STATE OF NEW MEXICO
SITE MAP

NOTE: LATITUDE AND LONGITUDE COORDINATES ARE SHOWN USING THE NORTH AMERICAN DATUM OF 1983 (NAD83). LISTED NEW MEXICO STATE PLANE EAST COORDINATES ARE GRID (NAD83). BASIS OF BEARING AND DISTANCES USED ARE NEW MEXICO STATE PLANE EAST COORDINATES MODIFIED TO THE SURFACE



0 10 50 100 200

SCALE 1" = 100'

DIRECTIONS TO LOCATION

FROM THE INTERSECTION OF STATE HIGHWAY 128 AND BUCK JACKSON ROAD GO SOUTHWEST ON BUCK JACKSON ROAD 0.43 MILE TO CALICHE LEASE ROAD, WEST OF CALICHE PIT ON LEFT, GO SOUTH ON CALICHE LEASE ROAD 1.45 MILES TO EXISTING 2-TRACK ROAD ON LEFT, GO EAST ON 2-TRACK ROAD ALONG THE SOUTH SIDE OF THE NORTH LINE OF SECTION 19, 1.0 MILE TO THE NORTHEAST CORNER OF SECTION 19, FOLLOW PROPOSED FLAGGED ROAD LINE ALONG THE SOUTH SIDE OF THE NORTH LINE OF SECTION 20, GO EAST 0.32 MILE TO NORTHWEST CORNER OF PAD.

DEVON ENERGY PRODUCTION COMPANY, L.P.

REBEL "20" FED 6Y

LOCATED 250 FT. FROM THE NORTH LINE
AND 1970 FT. FROM THE WEST LINE OF
SECTION 20, TOWNSHIP 24 SOUTH,
RANGE 32 EAST, N.M.P.M.

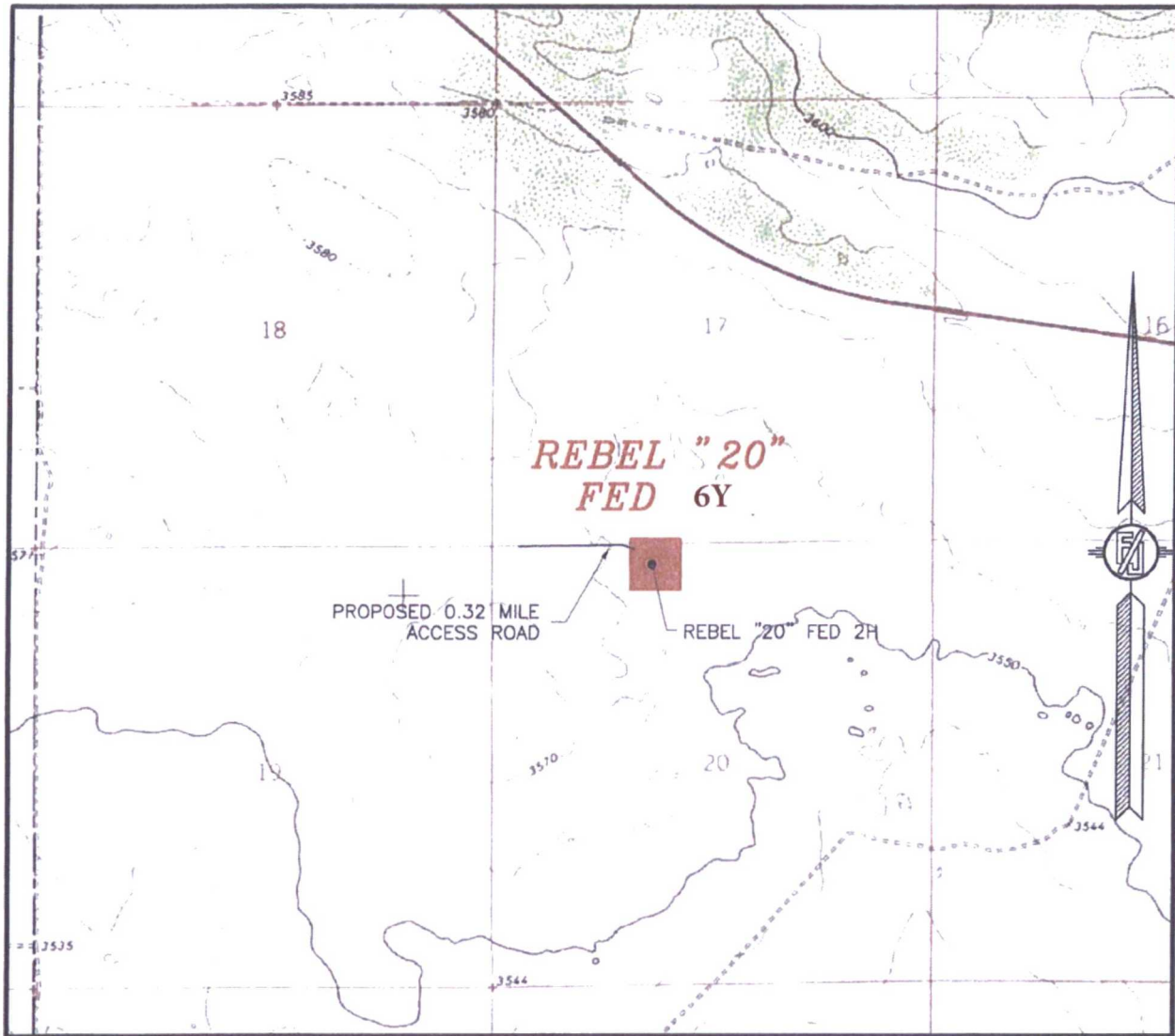
LEA COUNTY, STATE OF NEW MEXICO

FEBRUARY 8, 2016

SURVEY NO. 3834B

MADRON SURVEYING, INC. 301 SOUTH CANAL (575) 234-3341 CARLSBAD, NEW MEXICO

SECTION 20, TOWNSHIP 24 SOUTH, RANGE 32 EAST, N.M.P.M.
LEA COUNTY, STATE OF NEW MEXICO
LOCATION VERIFICATION MAP



USGS QUAD MAP:
PADUCA BREAKS NW

NOT TO SCALE

DEVON ENERGY PRODUCTION COMPANY, L.P.

REBEL "20" FED 6Y

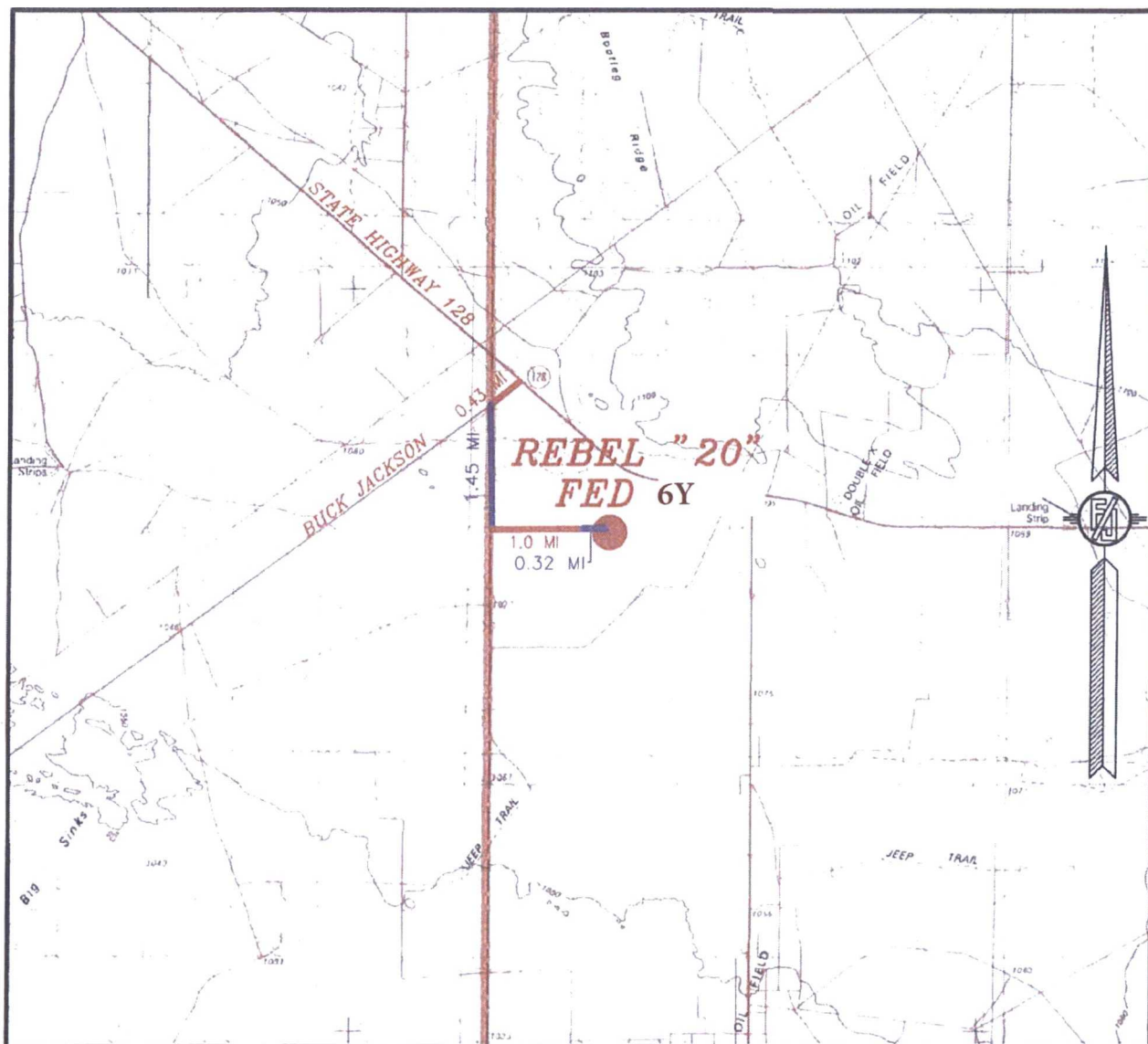
LOCATED 250 FT. FROM THE NORTH LINE
AND 1970 FT. FROM THE WEST LINE OF
SECTION 20, TOWNSHIP 24 SOUTH,
RANGE 32 EAST, N.M.P.M.
LEA COUNTY, STATE OF NEW MEXICO

FEBRUARY 8, 2016

SURVEY NO. 3834B

MADRON SURVEYING, INC. 301 SOUTH CANAL (575) 234-3341 CARLSBAD, NEW MEXICO

SECTION 20, TOWNSHIP 24 SOUTH, RANGE 32 EAST, N.M.P.M.
LEA COUNTY, STATE OF NEW MEXICO
VICINITY MAP



DISTANCES IN MILES

NOT TO SCALE

DEVON ENERGY PRODUCTION COMPANY, L.P.

REBEL "20" FED 6Y

LOCATED 250 FT. FROM THE NORTH LINE
AND 1970 FT. FROM THE WEST LINE OF
SECTION 20, TOWNSHIP 24 SOUTH,
RANGE 32 EAST, N.M.P.M.
LEA COUNTY, STATE OF NEW MEXICO

DIRECTIONS TO LOCATION

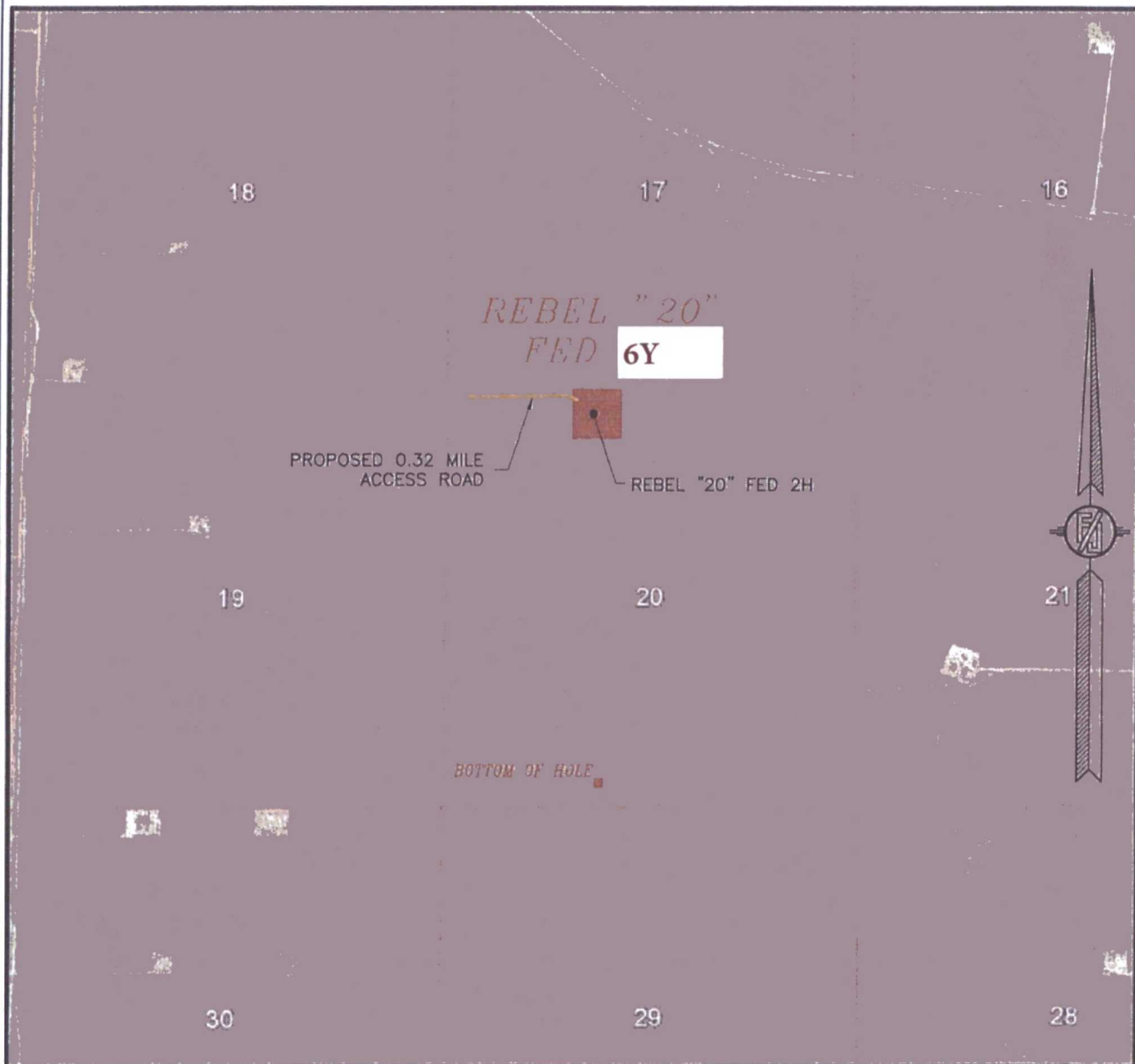
FROM THE INTERSECTION OF STATE HIGHWAY 128 AND BUCK JACKSON ROAD GO SOUTHWEST ON BUCK JACKSON ROAD 0.43 MILE TO CALICHE LEASE ROAD, WEST OF CALICHE PIT ON LEFT, GO SOUTH ON CALICHE LEASE ROAD 1.45 MILES TO EXISTING 2-TRACK ROAD ON LEFT. GO EAST ON 2-TRACK ROAD ALONG THE SOUTH SIDE OF THE NORTH LINE OF SECTION 19, 1.0 MILE TO THE NORTHEAST CORNER OF SECTION 19, FOLLOW PROPOSED FLAGGED ROAD LINE ALONG THE SOUTH SIDE OF THE NORTH LINE OF SECTION 20, GO EAST 0.32 MILE TO NORTHWEST CORNER OF PAD.

FEBRUARY 8, 2016

SURVEY NO. 3834B

MADRON SURVEYING, INC. 301 SOUTH CANAL (575) 234-3341 CARLSBAD, NEW MEXICO

SECTION 20, TOWNSHIP 24 SOUTH, RANGE 32 EAST, N.M.P.M.
LEA COUNTY, STATE OF NEW MEXICO
AERIAL PHOTO



NOT TO SCALE
AERIAL PHOTO:
GOOGLE EARTH
FEBRUARY 2014

DEVON ENERGY PRODUCTION COMPANY, L.P.

REBEL "20" FED 6Y

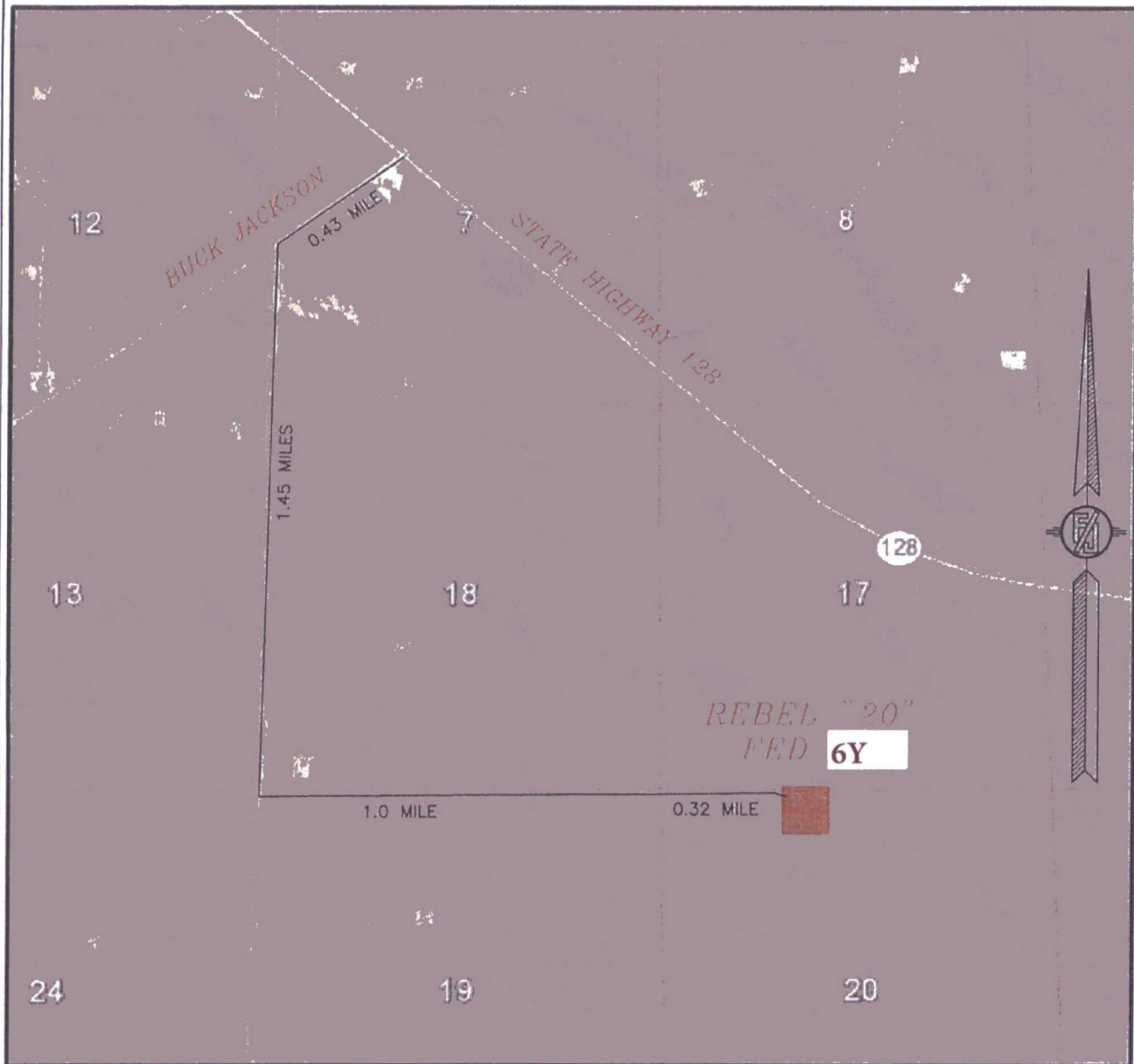
LOCATED 250 FT. FROM THE NORTH LINE
AND 1970 FT. FROM THE WEST LINE OF
SECTION 20, TOWNSHIP 24 SOUTH,
RANGE 32 EAST, N.M.P.M.
LEA COUNTY, STATE OF NEW MEXICO

FEBRUARY 8, 2016

SURVEY NO. 3834B

MADRON SURVEYING, INC. 301 SOUTH CANAL (575) 234-3341 CARLSBAD, NEW MEXICO

SECTION 20, TOWNSHIP 24 SOUTH, RANGE 32 EAST, N.M.P.M.
LEA COUNTY, STATE OF NEW MEXICO
ACCESS AERIAL ROUTE MAP



NOT TO SCALE
AERIAL PHOTO:
GOOGLE EARTH
FEBRUARY 2014

DEVON ENERGY PRODUCTION COMPANY, L.P.

REBEL "20" FED 6Y

LOCATED 250 FT. FROM THE NORTH LINE
AND 1970 FT. FROM THE WEST LINE OF
SECTION 20, TOWNSHIP 24 SOUTH,
RANGE 32 EAST, N.M.P.M.
LEA COUNTY, STATE OF NEW MEXICO

FEBRUARY 8, 2016

SURVEY NO. 3834B

MADRON SURVEYING, INC. 301 SOUTH CANAL (575) 234-3341 CARLSBAD, NEW MEXICO