

OXY USA Inc
APD ATTACHMENT: SPUDDER RIG DATA

OPERATOR NAME / NUMBER: OXY USA Inc

1. SUMMARY OF REQUEST:

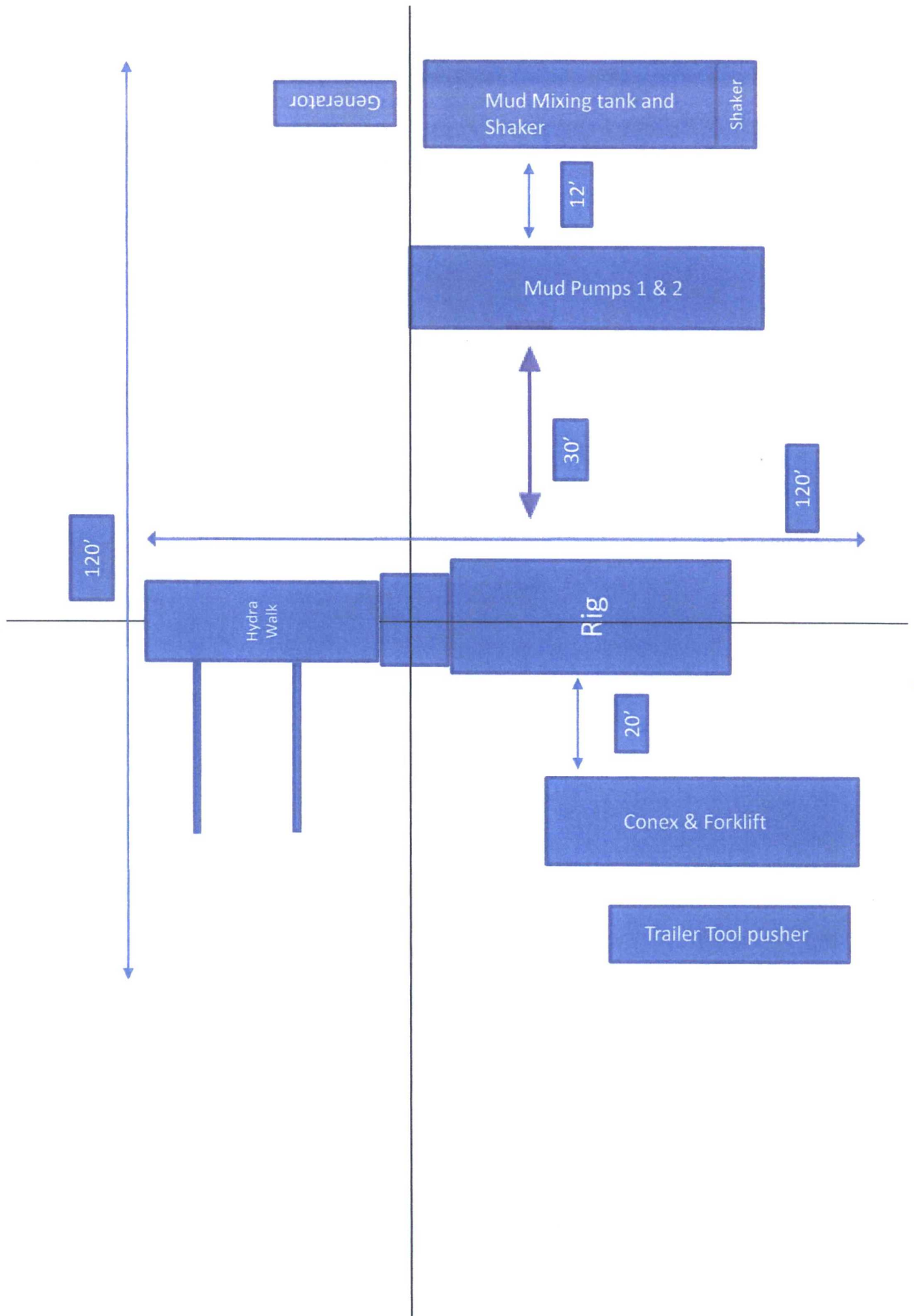
Oxy USA respectfully requests approval for the following operations for the surface hole in the drill plan:

1. Utilize a spudder rig to pre-set surface casing for time and cost savings.

2. Description of Operations

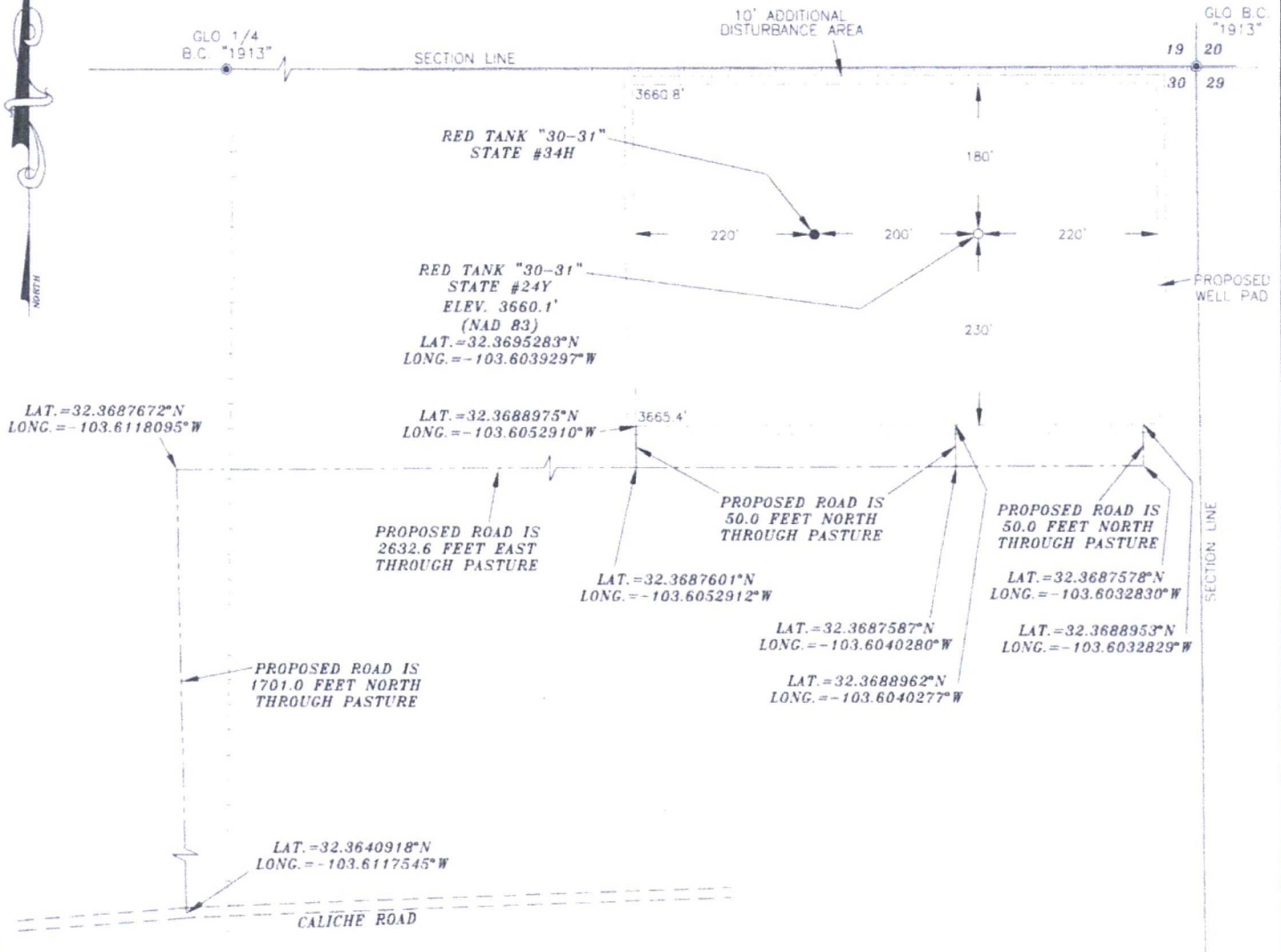
1. Spudder rig will move in to drill the surface hole and pre-set surface casing on the well.
 - a. After drilling the surface hole section, the spudder rig will run casing and cement following all of the applicable rules and regulations (OnShore Order 2, all COAs and NMOCD regulations).
 - b. The spudder rig will utilize fresh water-based mud to drill the surface hole to TD. Solids control will be handled entirely on a closed loop basis. No earth pits will be used.
2. The wellhead will be installed and tested as soon as the surface casing is cut off and the WOC time has been reached.
3. A blind flange at the same pressure rating as the wellhead will be installed to seal the wellbore. Pressure will be monitored with needle valves installed on two wingvalves.
 - a. A means for intervention will be maintained while the drilling rig is not over the well.
4. Spudder rig operations are expected to take 2-3 days per well on the pad.
5. The BLM will be contacted and notified 24 hours prior to commencing spudder rig operations.
6. Drilling operations will begin with a larger rig and a BOP stack equal to or greater than the pressure rating that was permitted will be nipped up and tested on the wellhead before drilling operations resume on each well.
 - a. The larger rig will move back onto the location within 90 days from the point at which the wells are secured and the spudder rig is moved off location.
 - b. The BLM will be contacted / notified 24 hours before the larger rig moves back on the pre-set locations.
7. Oxy will have supervision on the rig to ensure compliance with all BLM and NMOCD regulations and to oversee operations.
8. Once the rig is removed, Oxy will secure the wellhead area by placing a guard rail around the cellar area.

Spudder Rig Layout



OXY USA INC. RED TANK "30-31" STATE #24Y SITE PLAN

FAA PERMIT: NO



LEGEND

- DENOTES PROPOSED WELL PAD
- - - DENOTES PROPOSED ROAD

SURVEYORS CERTIFICATE

I, TERRY J. ASEL, NEW MEXICO PROFESSIONAL SURVEYOR NO. 15079, DO HEREBY CERTIFY THAT I CONDUCTED AND AM RESPONSIBLE FOR THIS SURVEY, THAT THIS SURVEY IS TRUE AND CORRECT TO THE BEST OF MY KNOWLEDGE AND BELIEF, AND MEETS THE "MINIMUM STANDARDS FOR SURVEYING IN NEW MEXICO" AS ADOPTED BY THE NEW MEXICO STATE BOARD OF REGISTRATION FOR PROFESSIONAL ENGINEERS AND SURVEYORS.

Terry J. Asel 10/30/2017
Terry J. Asel N.M. R.P.L.S. No. 15079

Asel Surveying

P.O. BOX 393 - 310 W TAYLOR
HOBBS, NEW MEXICO - 575-393-9146



OXY USA INC.

RED TANK "30-31" STATE #24Y LOCATED AT
200' FNL & 270' FEL IN SECTION 30,
TOWNSHIP 22 SOUTH, RANGE 33 EAST,
N.M.P.M., LEA COUNTY, NEW MEXICO

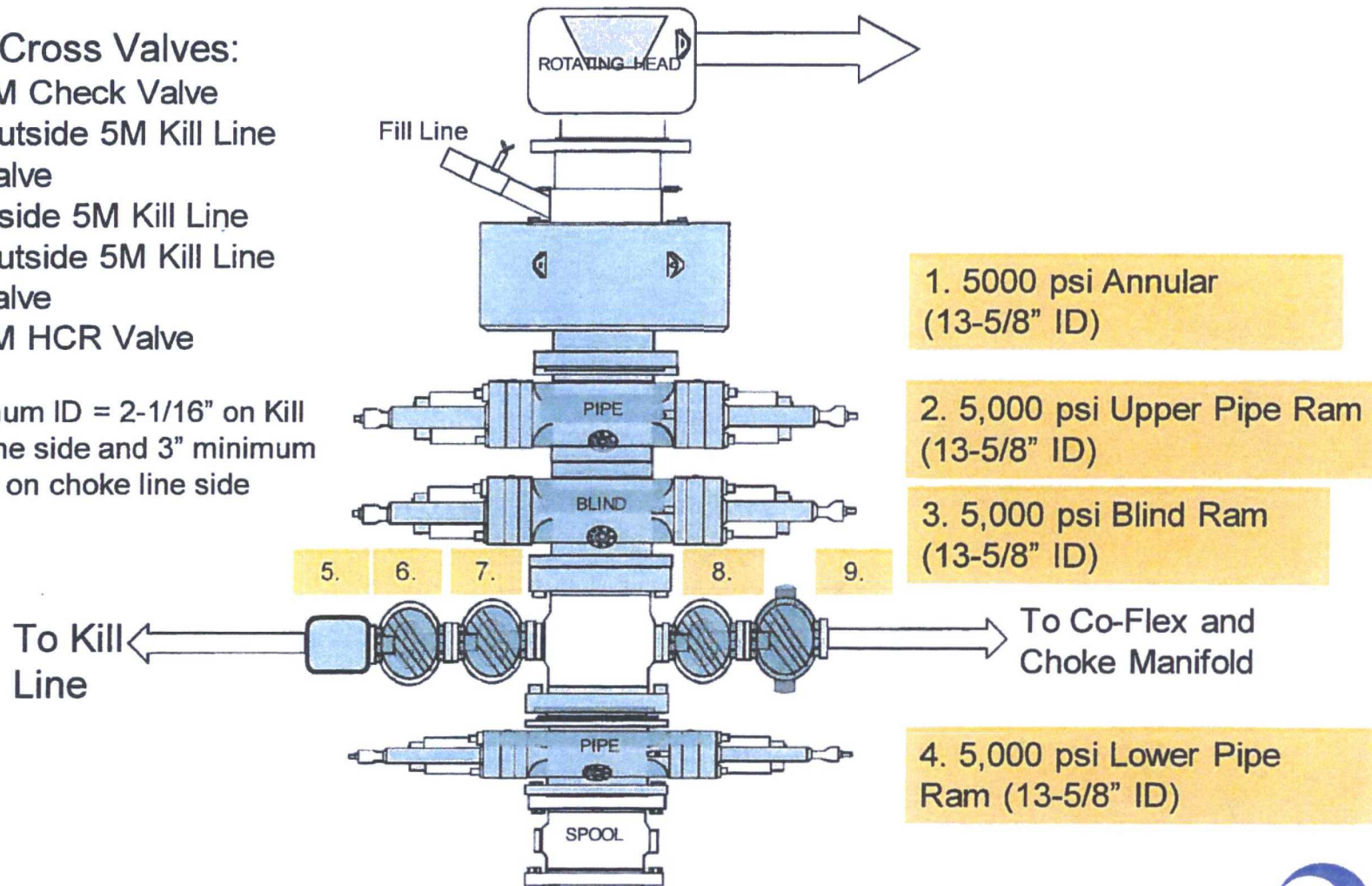
Survey Date: 08/08/17	Sheet 1 of 1 Sheets
W.O. Number: 170808WL-a (Rev. A)	Drawn By: KA Rev: A
Date: 10/26/17	170808WL-a Scale: 1"=200'

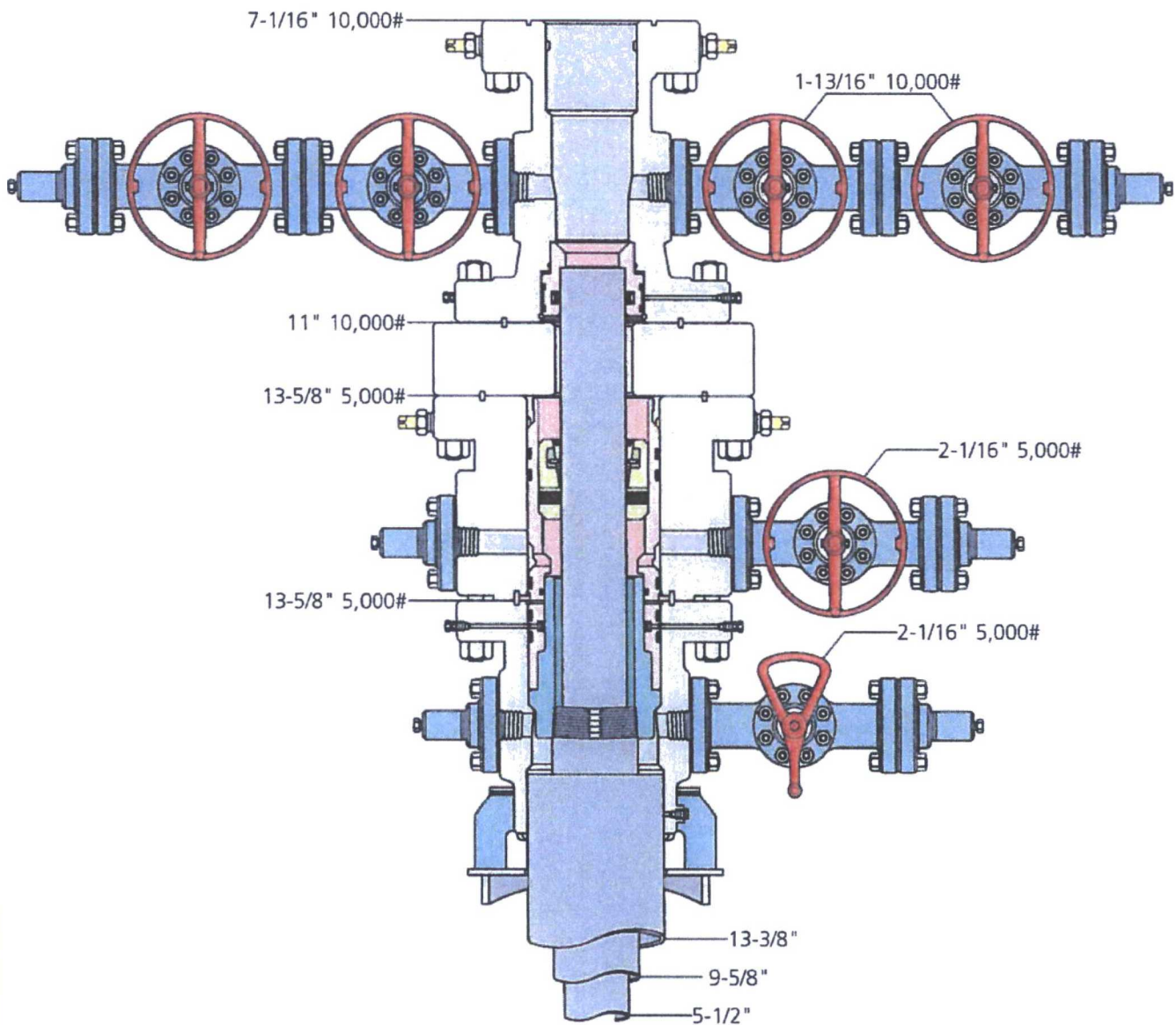
5M BOP Stack

Mud Cross Valves:

- 5. 5M Check Valve
- 6. Outside 5M Kill Line Valve
- 7. Inside 5M Kill Line Valve
- 8. Outside 5M Kill Line Valve
- 9. 5M HCR Valve

*Minimum ID = 2-1/16" on Kill Line side and 3" minimum ID on choke line side

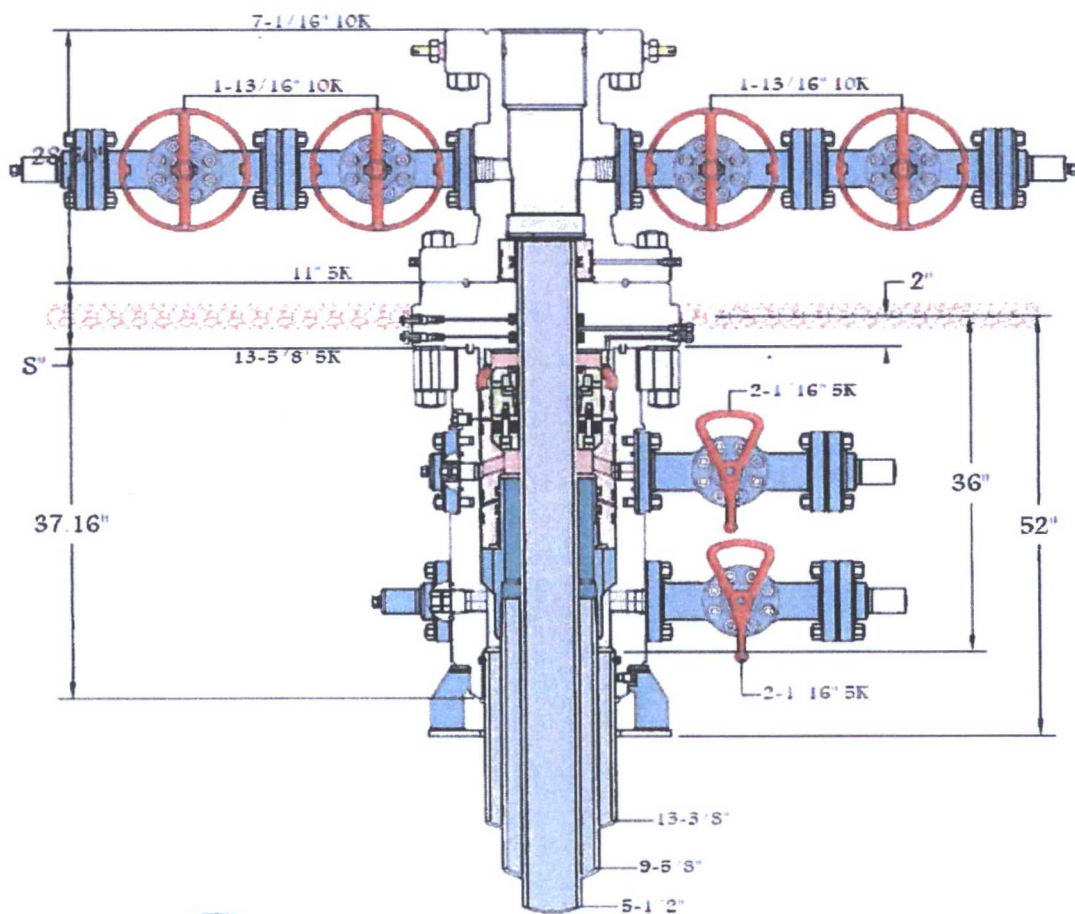




13" 5K MBS SL2 Wellhead



Jeanette	7-12-16	Working Pressure	# J-9786-4
----------	---------	------------------	------------



13-5/8" 5K MN-DS

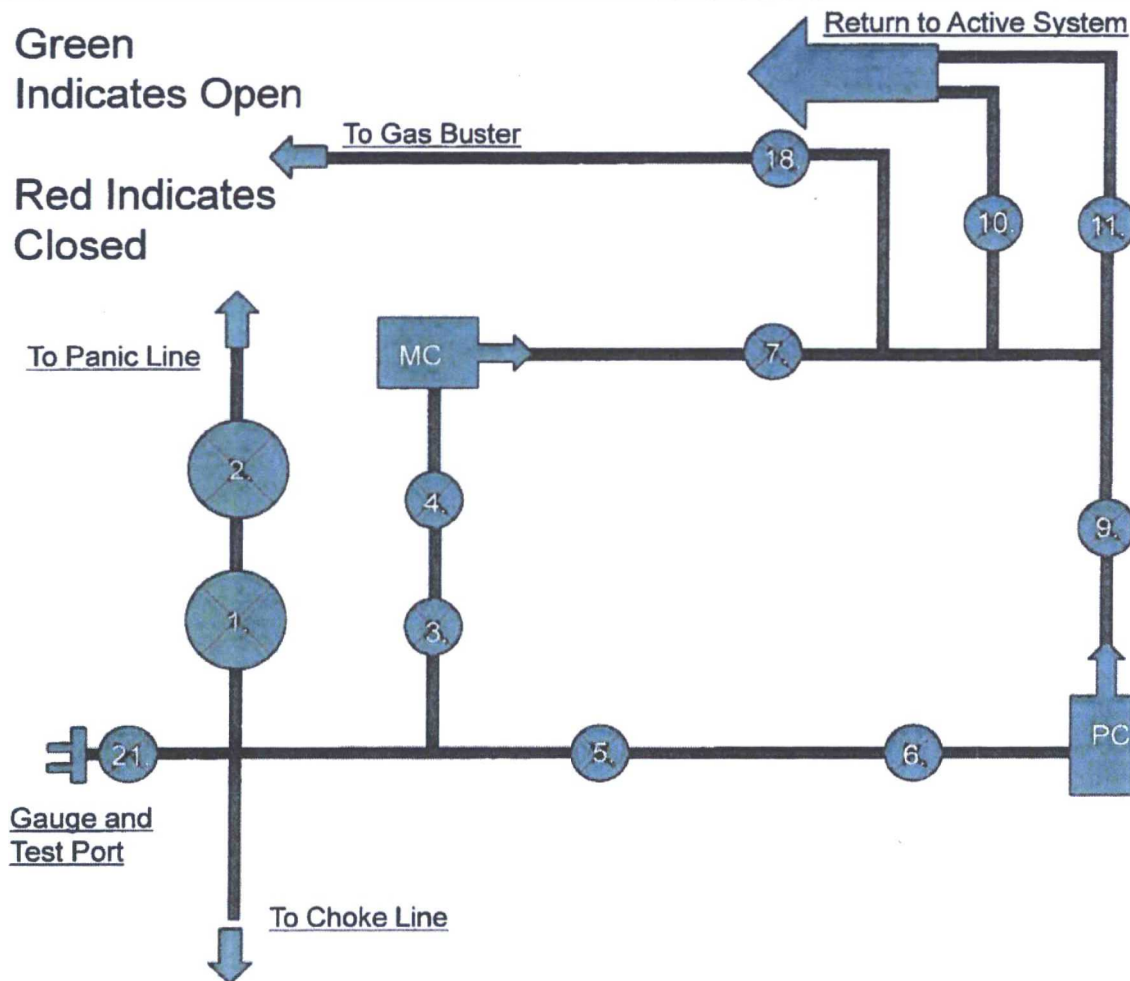
CAMERON
A Schlumberger Company

Brandon	5-10-17	#	1505172
---------	---------	---	---------

5M Choke Panel

Green
Indicates Open

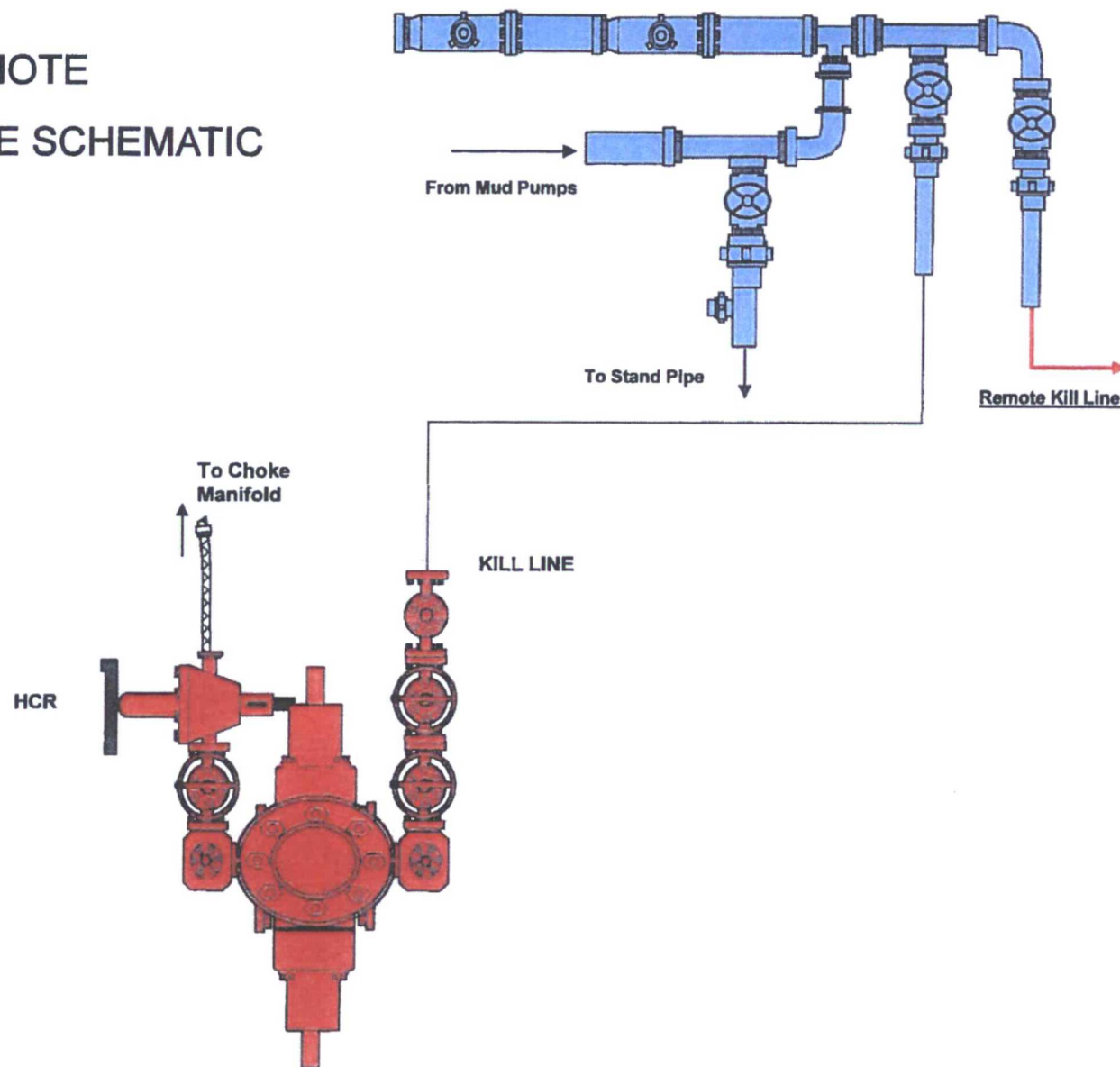
Red Indicates
Closed



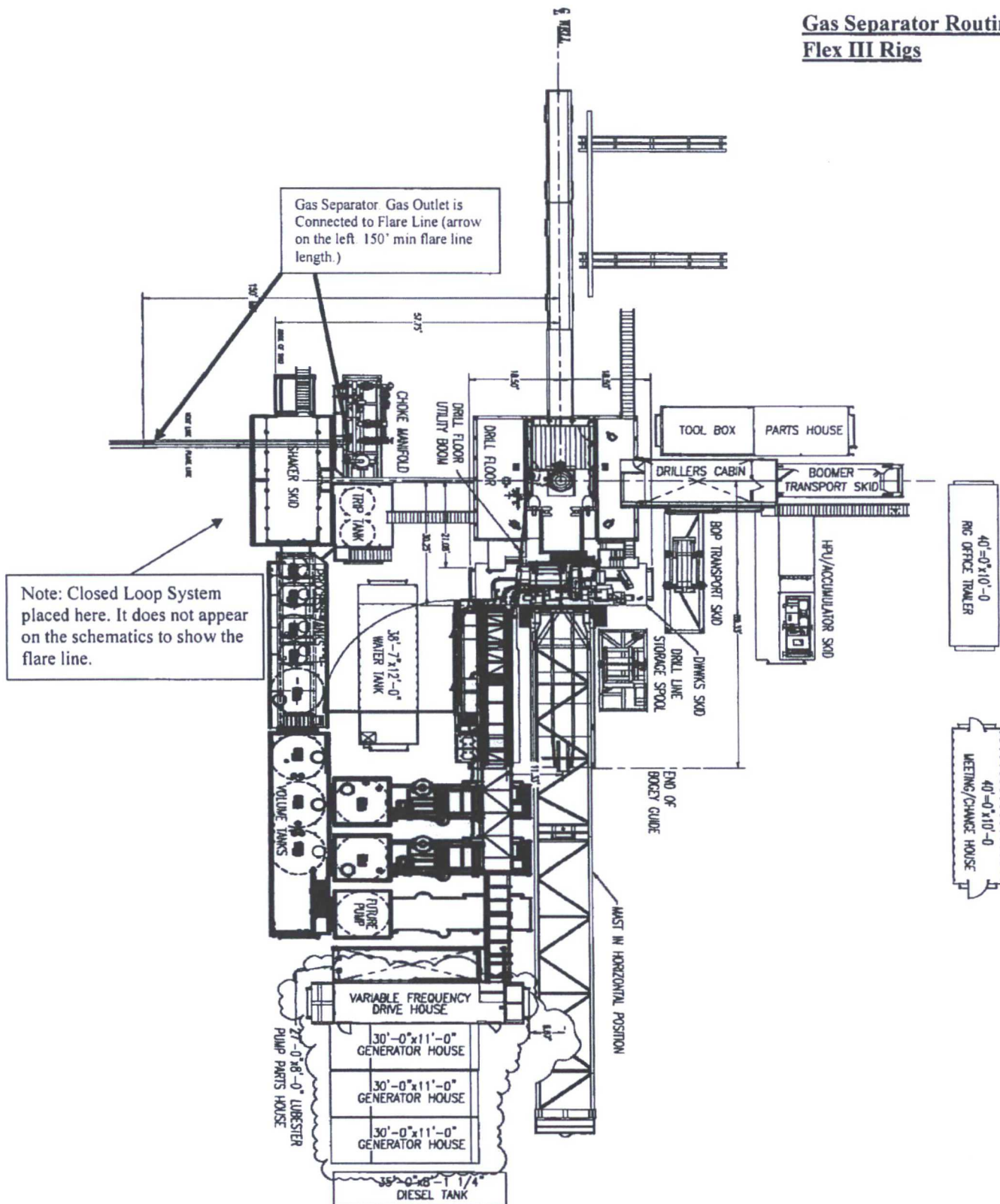
- 1. 4" Choke Manifold Valve
- 2. 4" Choke Manifold Valve
- 3. 3" Choke Manifold Valve
- 4. 3" Choke Manifold Valve
- 5. 3" Choke Manifold Valve
- 6. 3" Choke Manifold Valve
- 7. 3" Choke Manifold Valve
- 8. PC – Power Choke
- 9. 3" Choke Manifold Valve
- 10. 3" Choke Manifold Valve
- 11. Choke Manifold Valve
- 12. MC – Manual Choke
- 18. Choke Manifold Valve
- 21. Vertical Choke Manifold Valve

***All Valves 3" minimum**

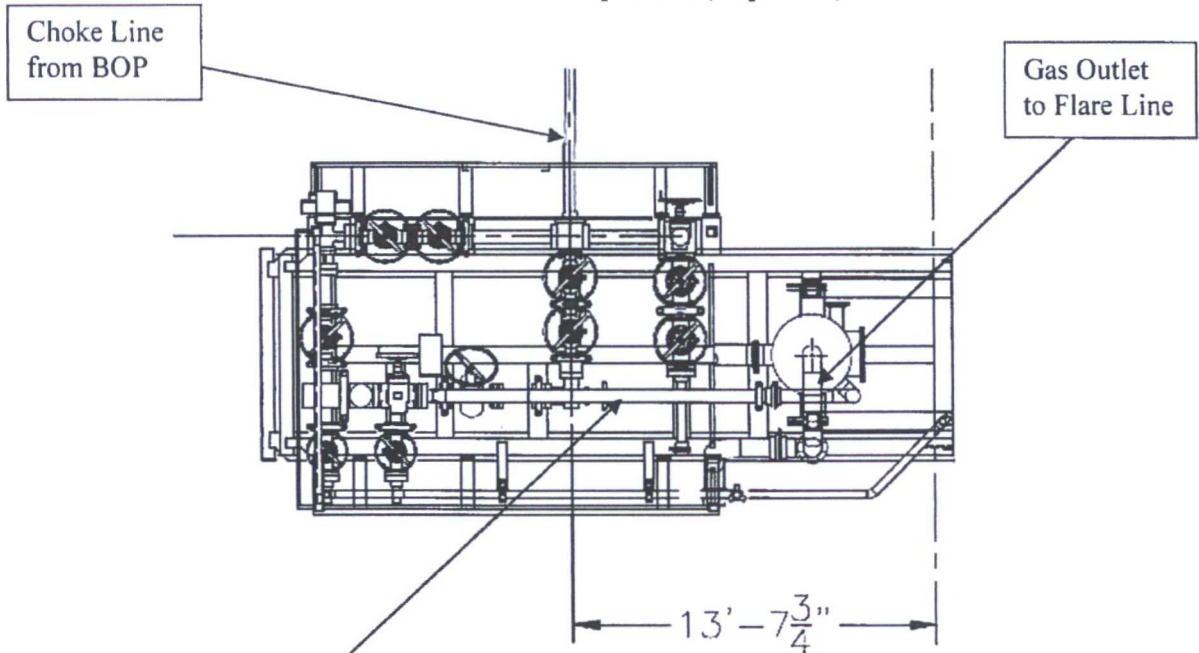
10M REMOTE KILL LINE SCHEMATIC



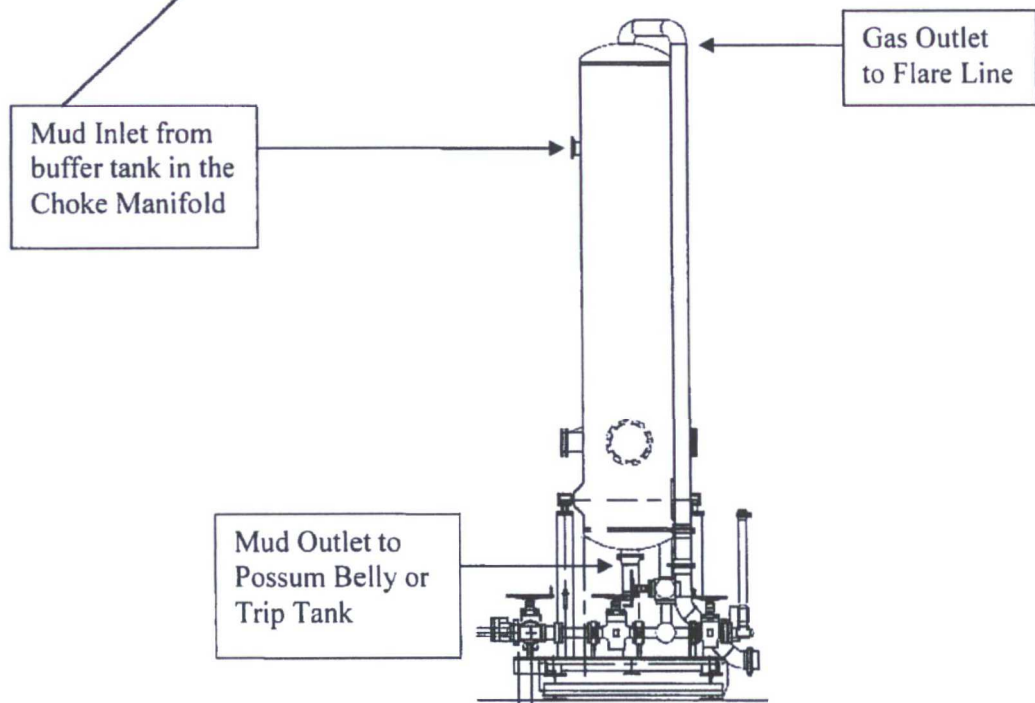
Gas Separator Routing Flex III Rigs



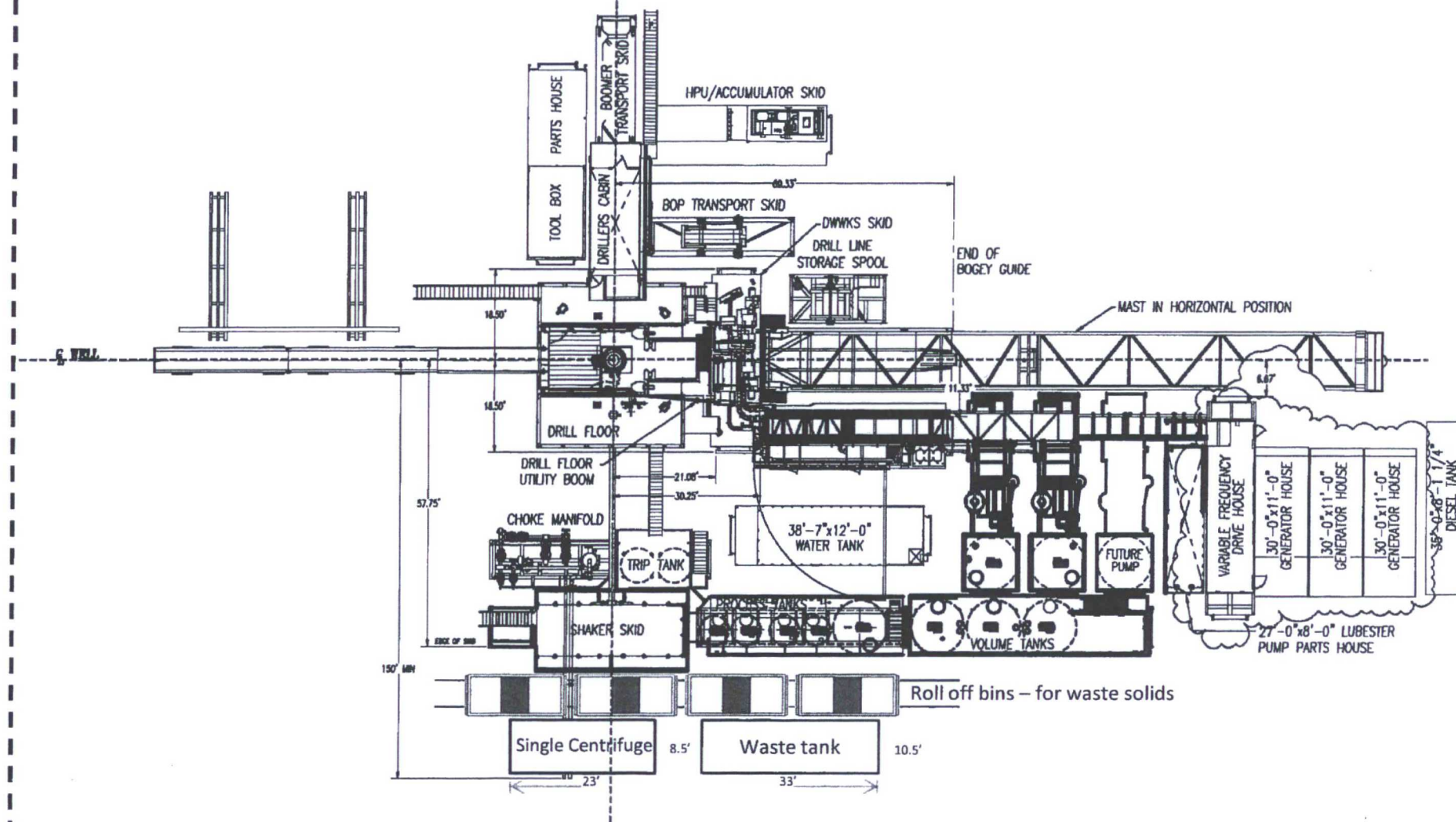
Choke Manifold – Gas Separator (Top View)



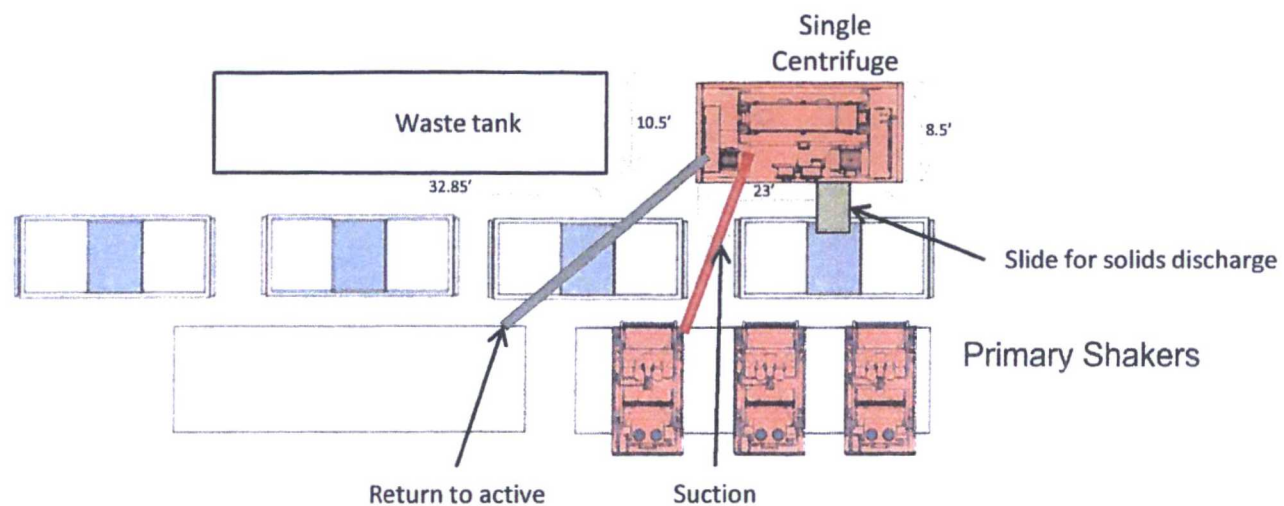
Choke Manifold – Gas Separator (Side View)



Oxy Single Centrifuge
Closed Loop System – New
Mexico Flex III
May 28, 2013



Oxy



Well Head

Oxy Single Centrifuge
Closed Loop System – New
Mexico Flex III
May 28, 2013



Permian Drilling Hydrogen Sulfide Drilling Operations Plan Red Tank 30-31 State Com 24H

Open drill site. No homes or buildings are near the proposed location.

1. Escape

Personnel shall escape upwind of wellbore in the event of an emergency gas release. Escape can take place through the lease road on the Southeast side of the location. Personnel need to move to a safe distance and block the entrance to location. If the primary route is not an option due to the wind direction, then a secondary egress route should be taken.

▲ H2S Detectors. At least three detectors will be installed: bell nipple, rig floor and Shakers.

● Briefing Areas. At least two briefing areas will be placed, 90 deg off.

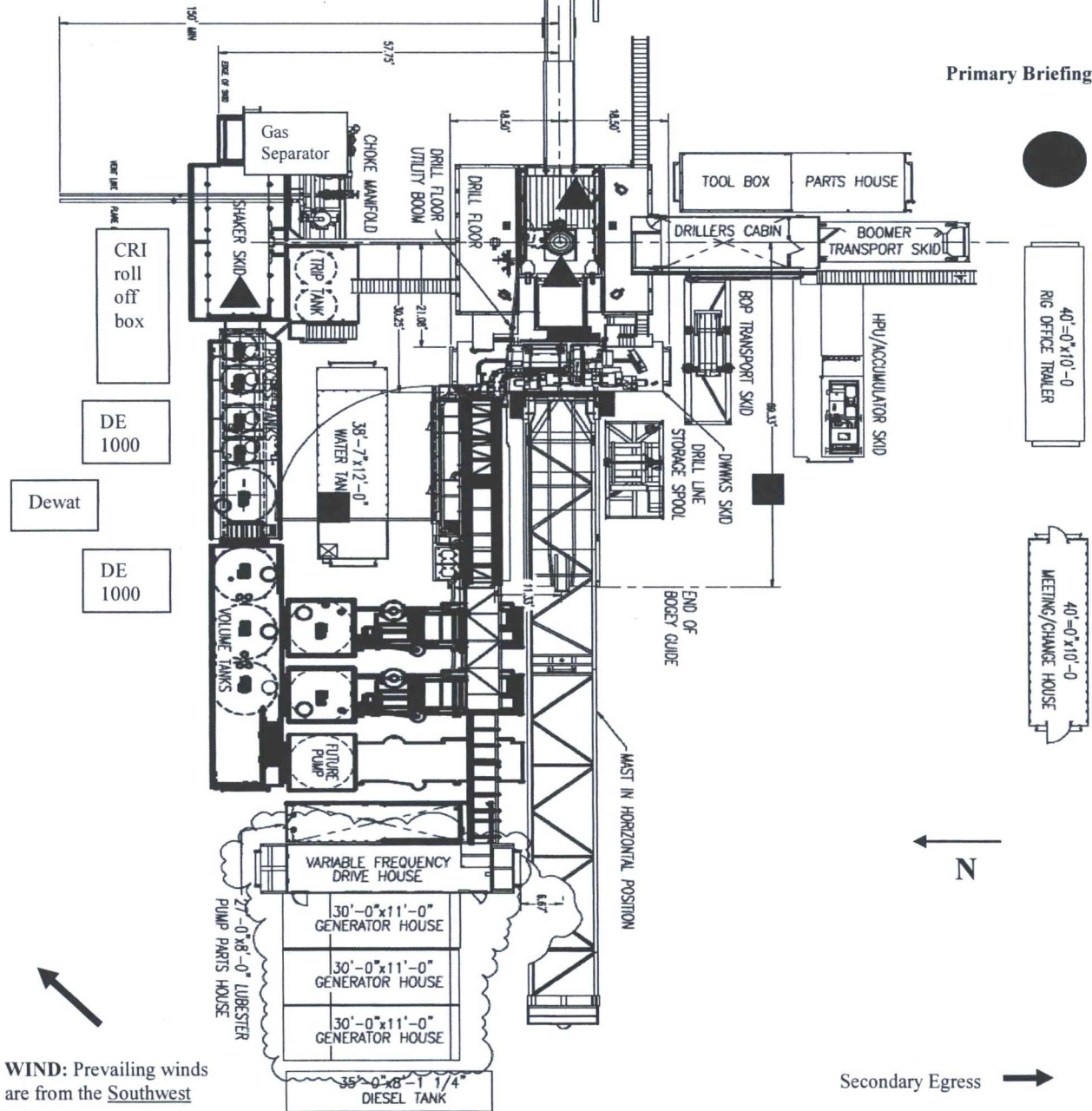
■ Wind direction indicators. Visible from rig floor and from the mud pits area.

A gas buster is connected to both the choke manifold and flowline outlets.

Secondary Briefing Area

Exit to road. Caution sign placed here.

Primary Briefing Area



WIND: Prevailing winds are from the Southwest

Secondary Egress