

District I - (575) 393-6161
1625 N. French Dr., Hobbs, NM 88240
District II - (575) 748-1283
811 S. First St., Artesia, NM 88210
District III - (505) 334-6178
1000 Rio Brazos Rd., Aztec, NM 87410
District IV - (505) 476-3460
1220 S. St. Francis Dr., Santa Fe, NM
87505

OIL CONSERVATION DIVISION
1220 South St. Francis Dr.
Santa Fe, NM 87505

WELL API NO. 30-025-27966
5. Indicate Type of Lease STATE <input checked="" type="checkbox"/> FEE <input type="checkbox"/>
6. State Oil & Gas Lease No.
7. Lease Name or Unit Agreement Name CENTRAL VACUUM UNIT
8. Well Number 156
9. OGRID Number 4323
10. Pool name or Wildcat VACUUM;GRAYBURG;SA
11. Elevation (Show whether DR, RKB, RT, GR, etc.)

SUNDRY NOTICES AND REPORTS ON WELLS
(DO NOT USE THIS FORM FOR PROPOSALS TO DRILL OR TO DEEPEN OR PLUG BACK TO A
DIFFERENT RESERVOIR. USE "APPLICATION FOR PERMIT" (FORM C-101) FOR SUCH
PROPOSALS.)

1. Type of Well: Oil Well ☐ Gas Well ☐ Other INJECTOR

2. Name of Operator
CHEVRON USA INC

3. Address of Operator
1616 W. BENDER BLVD HOBBS, NM 88240

4. Well Location

Unit Letter K : 2340 feet from the SOUTH line and 1330 feet from the WEST line
Section 25 Township 17S Range 34E NMPM County LEA

12. Check Appropriate Box to Indicate Nature of Notice, Report or Other Data

NOTICE OF INTENTION TO:

PERFORM REMEDIAL WORK ☐ PLUG AND ABANDON ☐
TEMPORARILY ABANDON ☐ CHANGE PLANS ☐
PULL OR ALTER CASING ☐ MULTIPLE COMPL ☐
DOWNHOLE COMMINGLE ☐
CLOSED-LOOP SYSTEM ☐
OTHER: ☐

SUBSEQUENT REPORT OF:

REMEDIAL WORK ☐ ALTERING CASING ☐
COMMENCE DRILLING OPNS. ☐ P AND A ☐
CASING/CEMENT JOB ☐

OTHER: TA STATUS W/ CHART ☒

13. Describe proposed or completed operations. (Clearly state all pertinent details, and give pertinent dates, including estimated date of starting any proposed work). SEE RULE 19.15.7.14 NMAC. For Multiple Completions: Attach wellbore diagram of proposed completion or recompletion.

CHEVRON USA INC IS RESPECTFULLY REQUESTING TO TEMPORARILY ABANDON THE ABOVE WELL.

11/29/2017 TEST CASING TO 520 PSI FOR 30 MINUTES. WITNESSED BY GEORGE BOWER/NMOCD.ORIGINAL CHART AND A COPY ARE ATTACHED.

WELL IS TEMPORARILY ABANDONED

This Approval of Temporary
Abandonment Expires 11/29/2019

Spud Date:

Rig Release Date:

I hereby certify that the information above is true and complete to the best of my knowledge and belief.

SIGNATURE Cindy Herrera-Murillo TITLE PERMITTING SPECIALIST DATE 11/29/2017

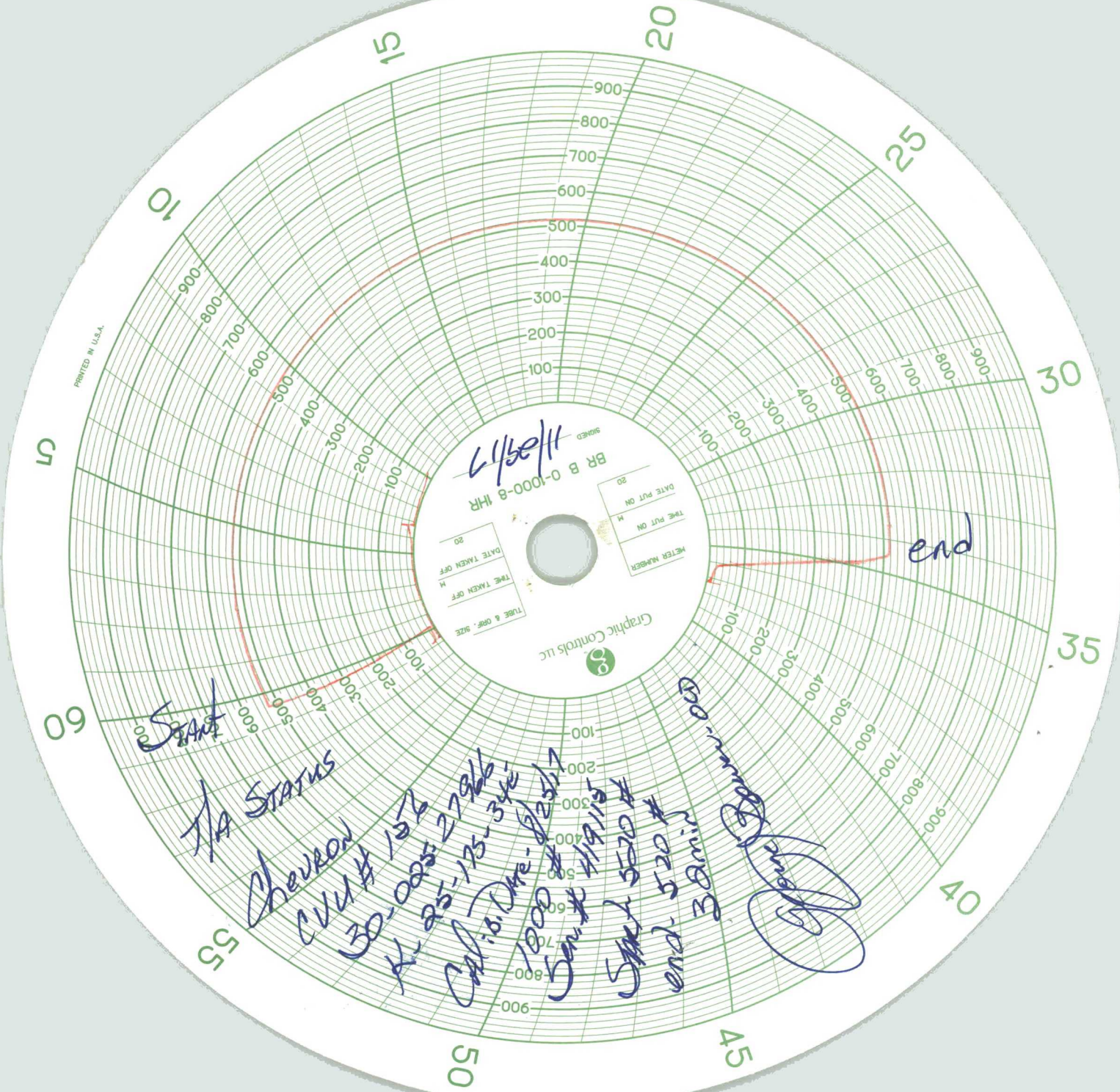
Type or print name CINDY HERRERA-MURILLO E-mail address: Cherreramurillo@chevron.com PHONE: 575-263-0431

For State Use Only

APPROVED BY: Maxey S Brown TITLE AO / II DATE 11/30/2017

Conditions of Approval (if any):

RBDMS - CHART - X



PRINTED IN U.S.A.

BR B 0-1000-8 1HR

11/20/17

METER NUMBER	DATE PUT ON
TIME TAKEN OFF	DATE TAKEN OFF
TUBE & ORIF. SIZE	

Graphic Controls Inc

Start

TA STATUS

Chevron

CVU # 152

30-005-2796

K. 25-175-346

Cal 10. Dne - 8/20/17

1000 # 4/19/15

Sprk 5520 #

end 520 #

38min

D. Jones

end

**TEMPORARY ABANDON
WELLBORE DIAGRAM**

Lease:	Central Vacuum Unit	Well No.:	156	Field:	Vacuum Field, Grayburg / San Andres FM
Surface Location:	2340' FSL & 1330' FWL	Unit Ltr:	K	Sec:	25
County:	Lea	St:	NM	API:	30-025-27966
Current Status:	Shut-In Injection Well	St Lease:		Chvno:	CY7788
Directions to Wellsite:		Elevation:	4005' GL	TSHR/Range:	T17S, R34E
				Cost Center:	
				TEPI:	
				MVP:	

Surface Csg.

Size:	16"
Wt.:	65# H-40
Set @:	343' (8jts)
Sxs cmt:	550sx
Circ:	Yes
TOC:	Surface
Hole Size:	20"

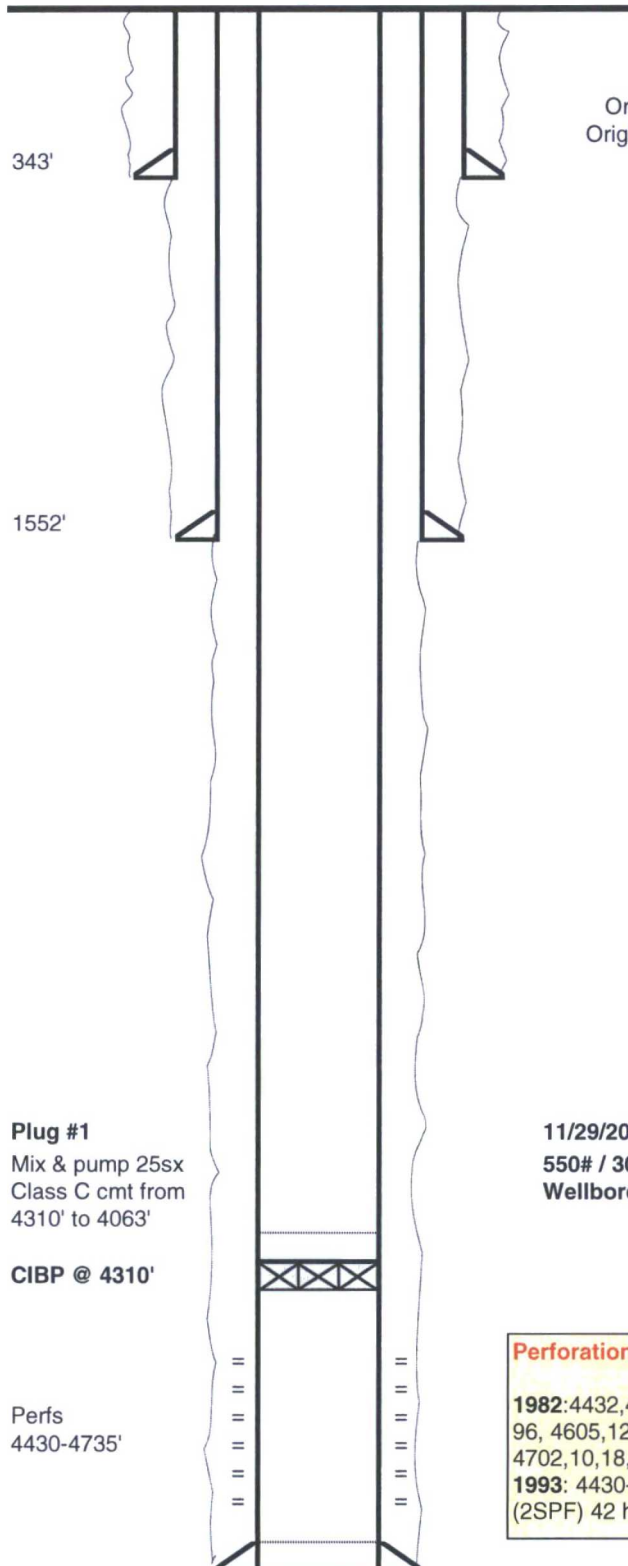
Intermediate Csg.

Size:	11-3/4"
Wt.:	42# H-40
Set @:	1552' (36jts)
Sxs Cmt:	950sx
Circ:	Yes
TOC:	Surface
Hole Size:	14 3/4"

Production Csg.

Size:	5-1/2"
Wt.:	15.5# K-55
Set @:	4800' (116jts)
Sxs Cmt:	1800sx
Circ:	Yes
TOC:	Surface
Hole Size:	7 7/8"

Formation Tops	
Salt	1674
Tansil	2740
Yates	2836
Seven Rivers	3164
Queen	3752
Grayburg	4106
San Andres	4411
OWC- San Andres	4751



KB:	
DF:	
GL:	4005'
Original Spud Date:	11/2/1982
Original Compl. Date:	11/18/1982

Plug #1
Mix & pump 25sx
Class C cmt from
4310' to 4063'

CIBP @ 4310'

Perfs
4430-4735'

**11/29/2017 Perform MIT. PT csg to
550# / 30min. Test - OK. Charted
Wellbore filled with packer fluid**

Perforation detail:

1982: 4432,45,53,56,60,77,95,4503,06,82,
96, 4605,12,60,65,87,89,93,96,99,
4702,10,18,27,31,35' (2SPF)
1993: 4430-36, 53-61, 4502-06'
(2SPF) 42 holes

PBTD:	4740'
TD:	4800'

Remarks:



Chevron
1400 Smith St., RM 45096
Houston, TX 77002

P.O. Box 1979, Farmington, NM 87499
(505) 325-2627

Name:
Central Vacuum Unit #156
API:30-025-27966, 12/02/2017

Well Temporary Abandoned Report

Date	Job	Comment
11/28/2017	Plug #1	(Cap the CIBP) Mix and pump 25 sxs, Class C cement (33 cf, 15 ppg) from 4310' to 4063', No WOC because of good casing test.

Work Detail

PUX	Activity
11/18/2017	
P	Travel to Harris 2-2 location
P	Fill out JSA, held safety meeting.
U	High Winds, stand by for high winds to calm down, Moved partial equipment to location. Rig down pulling unit and get ready for road.
P	Rode rig to location. Spot in base beam and rig.
P	RU pulling unit, spot in Pump. Secure location, debrief. Shut down for day.
11/19/2017	
P	Fill out JSA, held safety meeting.
P	Service and start rig and equipment, Check pressure, 2 3/8" tubing - 1300 PSI, 5 1/2" casing - 100 PSI, 11 3/4" casing - 0 PSI.
P	RU relief lines, blow well down to 0 PSI, RU pump to casing load w/ 1 BBL, pressured up to 300 PSI, RU pump to tubing, pumped 40 BBLs.
P	Rig down wellhead, strip on BOP, RU work-floor, x-over tubing equipment to 2 3/8".
P	Attempt to release Packer, pulled 15K, had little bump string weight @10K, attempt to latch on Packer, unable to latch on, RU pump to tubing, pumped 20 BBLs attempt to clean top of Packer.
P	Trip out of hole and tally, 70 stands, of 2 3/8" lined tubing EUE, EOT @4330' (140 joints total) NO on/off tool. Came out with a collar, appears parted above packer. Shut-in Well. Secure location, debrief. Shut down for day.
11/20/2017	
P	Fill out JSA, held safety meeting.
P	Service and start rig and equipment, check pressure on well, no tubing, 5 1/2" casing - 0 PSI, Surface casing - 0 PSI, open well - perform function test on BOP.
U	Wait on orders, Chevron request to fish out packer.
U	Trip in hole with tubing to 4330'
U	Trip out of hole, lay-down tubing - 140 joints, set aside location.
U	Chevron request to run packer, circulate and test casing, Wait on work string.
U	Unload work string
U	Pick-up 5 1/2" Packer, Trip in hole, pick-up 140 joints to 4330'.

P Shut-in well, secure location, debrief, Shut down for day.

11/21/2017

P Fill out JSA, held safety meeting.

P Service and start rig and equipment, check pressure, 2 3/8" tubing - 0 PSI, 5 1/2" casing - 0 PSI, surface casing - 0 PSI, open well, perform function test on BOP.

U Jimmy Banks request to set Packer, attempt to top off casing and pressure test casing, set packer @4325'. RU pump to casing load w/ 25 BBLs, unable to pressured up.

U Unset packer, RU pump to tubing, load and establish circulation out casing w/ 20 BBLs, pump 70 BBLs, set packer. RU pump to casing, pressure test casing to 500 PSI, test good, release pressure, unset Packer.

U Trip out of hole w/ 28 stands.

U Shut the job down due to high winds, attempt to wait out high winds to calm down.

P Shut-in well, secure location, debrief, Shut down for day.

11/22/2017

P Fill out JSA, held safety meeting.

P Service and start rig and equipment, Check pressure on well, 2 3/8" tubing - 0 PSI, 5 1/2" casing - 0 PSI, Surface casing - 0 PSI, open well, perform function test on BOP.

U Continue to Trip out of hole, lay-down 5 1/2" Packer.

U Pick-up overshot, 3-2 7/8" DCs, bumper sub, 3-2 7/8" DCs, jars, x-over, 2 3/8" tubing to 4330'.

U Attempt to latch on to packer, work it, unable to latch on to packer.

U Trip out of hole, lay-down bottom-hole assembly.

P RU A-plus W/L, Run in hole with 5 1/2" CIBP to 4310', Set. Pull out of hole, Rig-down W/L.

P Shut-in well, secure location, debrief, Shut down for day.

11/27/2017

P Fill out JSA, held safety meeting on the JSA.

P Service and start rig and equipment, Check Pressure on Well, 5 1/2" casing - 0 PSI, Surface casing - 0 PSI, open well. Perform function test on BOP. Bump test the fixed H2S monitors and perform a hazard hunt. Fill out and check the 2-3/8" elevators.

P Pick-up the plugging sub, Trip in hole and tag the existing CIBP at 4310'. Load the hole with 30bbls of fresh and pump 100bbls total.

P Secure location, debrief. Shut down for day.

11/28/2017

P Fill out JSA, held safety meeting on the JSA.

P Service and start rig and equipment. Check pressure on the well, Tubing - light vacuum, Casing - light vacuum, Bradenhead - 0 PSI, open the well to the pit.

P Load the hole with 2 bbls, chart and Pressure test the well to 550 PSI, good test.

P **Plug #1** (Cap the CIBP) Mix and pump 25 sxs, Class C cement (33 cf, 15 ppg) from 4310' to 4063', No WOC because of good casing test.

P Trip out of hole, lay-down to 4005', RU the pump and reverse out with 20 bbls, continue Trip out of hole to 3690'.

P Roll the hole with 110bbls with Packer fluid mixed into it.

- P Trip out of hole, lay-down to 2016' and load the hole with 4bbls with packer fluid. Continue Trip out of hole, lay-down to 310' and load the hole with 4bbls with packer fluid. Lay-down remaining tubing.
- P Rig down tubing equipment and the work floor. ND the BOP and NU the well head and tree.
- P Secure location, debrief and shut down for day.

11/29/2017

- P Fill out JSA, held safety meeting on the JSA.
- P Service and start rig and equipment. Check pressure on the well, Casing - 0 PSI, Bradenhead - 0 PSI, open the well to the pit.
- P Rig down the daylight pulling unit.
- P Perform a 550 PSI charted MIT test on the Casing for 30 minutes; good test.
- P Rig down pump and lines.

* P - Procedure Planned; U - Unplanned A+ issue; X - COA, Well Conditions

On Site Reps:

Name	Association	Notes
Jimmy Banks	Co. Rep.	On location
Keith Painter	Co. Rep.	On location