

Submit 1 Copy To Appropriate District Office

District I - (575) 393-6161
1625 N. French Dr., Hobbs, NM 88240
District II - (575) 748-1283
811 S. First St., Artesia, NM 88210
District III - (505) 334-6178
1000 Rio Brazos Rd., Aztec, NM 87410
District IV - (505) 476-3460
1220 S. St. Francis Dr., Santa Fe, NM 87505

State of New Mexico
Energy, Minerals and Natural Resources

Form C-103
Revised July 18, 2013

OIL CONSERVATION DIVISION
1220 South St. Francis Dr.
Santa Fe, NM 87505

HOBBS OGD

DEC 01 2017

WELL API NO.	30-025-44021
5. Indicate Type of Lease	STATE <input checked="" type="checkbox"/> FEE <input type="checkbox"/>
6. State Oil & Gas Lease No.	E-5898
7. Lease Name or Unit Agreement Name	Bell Lake Unit South
8. Well Number	319H
9. OGRID Number	12361
10. Pool name or Wildcat	Bell Lake; Bone Spring, North
11. Elevation (Show whether DR, RKB, RT, GR, etc.)	3632 GR

SUNDRY NOTICES AND REPORTS ON WELLS
(DO NOT USE THIS FORM FOR PROPOSALS TO DRILL OR TO DEEPEN OR PLUG BACK TO A DIFFERENT RESERVOIR. USE "APPLICATION FOR PERMIT" (FORM C-101) FOR SUCH PROPOSALS.)

1. Type of Well: Oil Well ☒ Gas Well ☐ Other

2. Name of Operator
Kaiser-Francis Oil Company

3. Address of Operator
P. O. Box 21468, Tulsa, OK 74121-1468

4. Well Location
Unit Letter L : 2203 feet from the South line and 503 feet from the West line
Section 1 Township 24S Range 33E NMPM Lea County

11. Elevation (Show whether DR, RKB, RT, GR, etc.)
3632 GR

12. Check Appropriate Box to Indicate Nature of Notice, Report or Other Data

NOTICE OF INTENTION TO:

PERFORM REMEDIAL WORK ☐ PLUG AND ABANDON ☐
TEMPORARILY ABANDON ☐ CHANGE PLANS ☐
PULL OR ALTER CASING ☐ MULTIPLE COMPL ☐
DOWNHOLE COMMINGLE ☐
CLOSED-LOOP SYSTEM ☐
OTHER: Change SHL ☒

SUBSEQUENT REPORT OF:

REMEDIAL WORK ☐ ALTERING CASING ☐
COMMENCE DRILLING OPNS. ☐ P AND A ☐
CASING/CEMENT JOB ☐

OTHER: ☐

13. Describe proposed or completed operations. (Clearly state all pertinent details, and give pertinent dates, including estimated date of starting any proposed work). SEE RULE 19.15.7.14 NMAC. For Multiple Completions: Attach wellbore diagram of proposed completion or recompletion.

Kaiser-Francis Oil Company requests approval to change the SHL on the above well:

Previous SHL: Unit Letter L 2203' FSL & 503' FWL of Sec. 1-24S-33E

New SHL: Unit Letter L 2213.9' FSL & 531.1' FWL of Sec. 1-24S-33E

Spud Date:

Rig Release Date:

I hereby certify that the information above is true and complete to the best of my knowledge and belief.

SIGNATURE

C. Van Valkenburg

TITLE Mgr., Regulatory Compliance DATE 11/30/17

Type or print name Charlotte Van Valkenburg E-mail address: Charlotv@kfoc.net PHONE: 918-491-4314

For State Use Only

Petroleum Engineer

APPROVED BY:

TITLE

DATE

Conditions of Approval (if any):

12/11/17

DISTRICT I
1625 N. French Dr., Hobbs, NM 88240
Phone: (575) 393-6161 Fax: (575) 393-0720

DISTRICT II
811 S. First St., Artesia, NM 88210
Phone: (575) 748-1283 Fax: (505) 748-9720

DISTRICT III
1000 Rio Brazos Road, Aztec, NM 87410
Phone: (505) 334-6178 Fax: (505) 334-6170

DISTRICT IV
1220 S. St. Francis Dr., Santa Fe, NM 87505
Phone: (505) 476-3460 Fax: (505) 476-3462

State of New Mexico
Energy, Minerals & Natural Resources Department
OIL CONSERVATION DIVISION
1220 South St. Francis Dr.
Santa Fe, New Mexico 87505

Form C-102
Revised August 1, 2011
Submit one copy to appropriate
District Office

AMENDED REPORT

WELL LOCATION AND ACREAGE DEDICATION PLAT

API Number 30-025-44021	Pool Code 5150	Pool Name Bell Lake; Bone Spring, North
Property Code 316706	Property Name BELL LAKE UNIT SOUTH	Well Number 319H
OGRID No. 12361	Operator Name KAISER-FRANCIS OIL COMPANY	Elevation 3632'

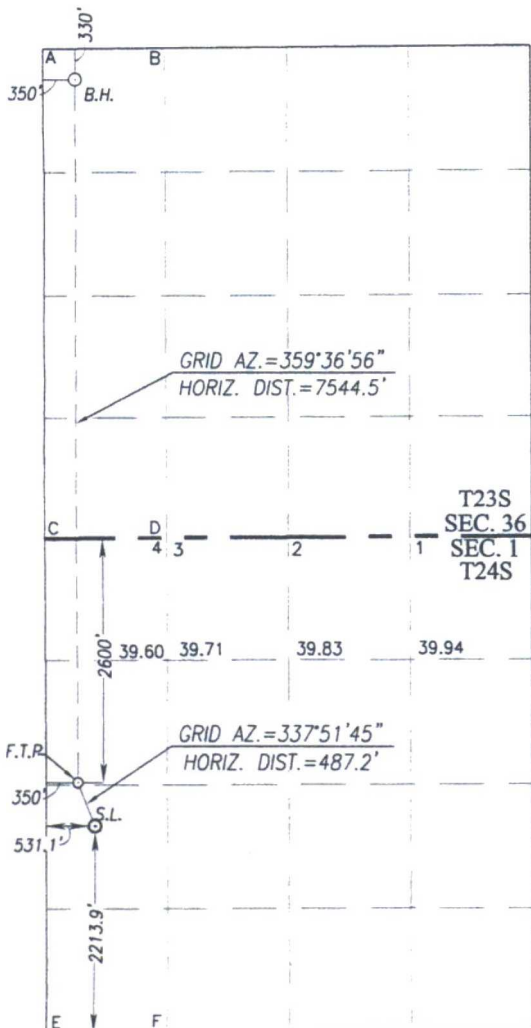
Surface Location

UL or lot No.	Section	Township	Range	Lot Idn	Feet from the	North/South line	Feet from the	East/West line	County
L	1	24-S	33-E		2213.9	SOUTH	531.1	WEST	LEA

Bottom Hole Location If Different From Surface

UL or lot No.	Section	Township	Range	Lot Idn	Feet from the	North/South line	Feet from the	East/West line	County
D	36	23-S	33-E		330	NORTH	350	WEST	LEA
Dedicated Acres 160	Joint or Infill	Consolidation Code	Order No.						

NO ALLOWABLE WILL BE ASSIGNED TO THIS COMPLETION UNTIL ALL INTERESTS HAVE BEEN CONSOLIDATED OR A NON-STANDARD UNIT HAS BEEN APPROVED BY THE DIVISION



SCALE: 1"=2000'

BOTTOM HOLE LOCATION
NAD 83 NME
Y = 461952.0 N
X = 788568.4 E
LAT. = 32.267448° N
LONG. = 103.533464° W

BOTTOM HOLE LOCATION
NAD 27 NME
Y = 461892.8 N
X = 747384.7 E
LAT. = 32.267324° N
LONG. = 103.532985° W

CORNER COORDINATES TABLE
NAD 27 NME

A - Y = 462219.8 N, X = 747032.5 E
B - Y = 462230.8 N, X = 748351.1 E
C - Y = 456947.4 N, X = 747071.8 E
D - Y = 456955.5 N, X = 748391.2 E
E - Y = 451683.5 N, X = 747099.7 E
F - Y = 451688.5 N, X = 748422.0 E

CORNER COORDINATES TABLE
NAD 83 NME

A - Y = 462279.1 N, X = 788216.1 E
B - Y = 462290.0 N, X = 789534.8 E
C - Y = 457006.5 N, X = 788255.6 E
D - Y = 457014.5 N, X = 789575.0 E
E - Y = 451742.4 N, X = 788283.7 E
F - Y = 451747.4 N, X = 789606.0 E

FIRST TAKE POINT
NAD 83 NME
Y = 454409.1 N
X = 788619.0 E
LAT. = 32.246714° N
LONG. = 103.533482° W

FIRST TAKE POINT
NAD 27 NME
Y = 454350.2 N
X = 747435.1 E
LAT. = 32.246591° N
LONG. = 103.533004° W

GEODETIC COORDINATES
NAD 83 NME
SURFACE LOCATION
Y = 453957.9 N
X = 788802.6 E
LAT. = 32.245470° N
LONG. = 103.532900° W

GEODETIC COORDINATES
NAD 27 NME
SURFACE LOCATION
Y = 453898.9 N
X = 747618.7 E
LAT. = 32.245347° N
LONG. = 103.532421° W

OPERATOR CERTIFICATION

I hereby certify that the information herein is true and complete to the best of my knowledge and belief, and that this organization either owns a working interest or unleased mineral interest in the land including the proposed bottom hole location or has a right to drill this well at this location pursuant to a contract with an owner of such mineral or working interest, or to a voluntary pooling agreement or a compulsory pooling order heretofore entered by the division.

C. Jan Valkenburg
Signature
11/30/17
Date

Charlotte Van Valkenburg
Printed Name

Charlotv@kfoc.net
E-mail Address

SURVEYOR CERTIFICATION

I hereby certify that the well location shown on this plat was plotted from field notes of actual surveys made by me or under my supervision, and that the same is true and correct to the best of my belief.

NOVEMBER 2, 2017

Date of Survey
Signature & Seal of Professional Surveyor.

Ronald J. Eidson
Certificate Number
Gary C. Eidson 12641
Ronald J. Eidson 3239

DSS REL W.O.: 17131035 JWSC W.O.: 17.11.1060