

As-Drilled

CONFIDENTIAL

Form C-102

District I
1625 N. French Dr., Hobbs, NM 88240
Phone: (575) 393-6161 Fax: (575) 393-0720

District II
811 S. First St., Artesia, NM 88210
Phone: (575) 748-1283 Fax: (575) 748-9720

District III
1000 Rio Brazos Road, Aztec, NM 87410
Phone: (505) 334-6178 Fax: (505) 334-6170

District IV
1220 S. St. Francis Dr., Santa Fe, NM 87505
Phone: (505) 476-3460 Fax: (505) 476-3462

HOBBS OGD**DEC 06 2017****RECEIVED**

State of New Mexico

Energy, Minerals & Natural Resources Department

OIL CONSERVATION DIVISION

1220 South St. Francis Dr.

Santa Fe, NM 87505

Revised August 1, 2011
Submit one copy to appropriate
District Office

☐ AMENDED REPORT**WELL LOCATION AND ACREAGE DEDICATION PLAT**

¹ API Number 30-025-42993	² Pool Code 49490	³ Pool Name Paduca; Delaware, North
⁴ Property Code 314752	⁵ Property Name REBEL 20 FED	⁶ Well Number 2H
⁷ OGRID No. 6137	⁸ Operator Name DEVON ENERGY PRODUCTION COMPANY, L.P.	⁹ Elevation 3564.1

¹⁰ Surface Location

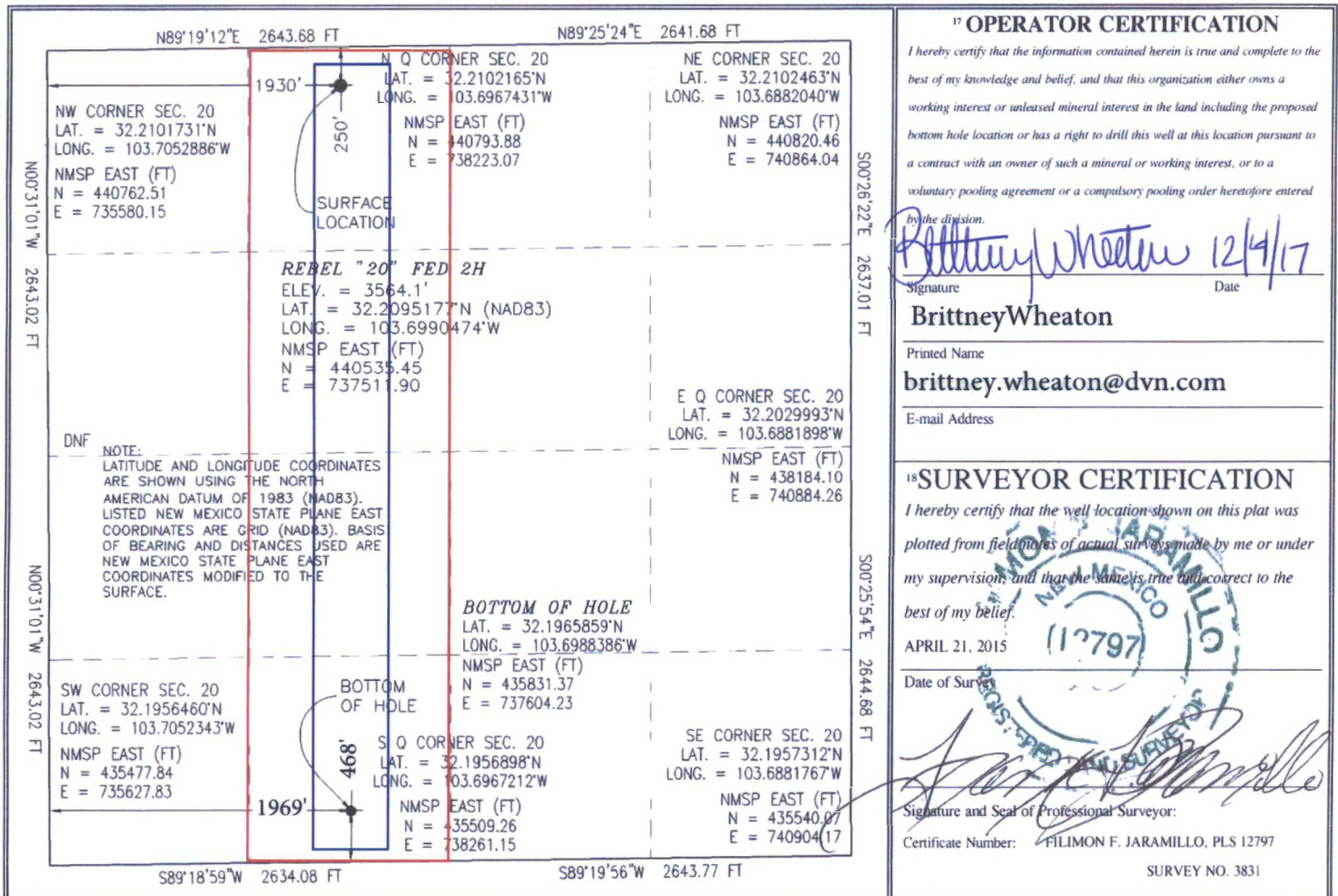
UL or lot no. C	Section 20	Township 24 S	Range 32 E	Lot Idn	Feet from the 250	North/South line NORTH	Feet from the 1930	East/West line WEST	County LEA
---------------------------	----------------------	-------------------------	----------------------	---------	-----------------------------	----------------------------------	------------------------------	-------------------------------	----------------------

¹¹ Bottom Hole Location If Different From Surface

UL or lot no. N	Section 20	Township 24 S	Range 32 E	Lot Idn	Feet from the 468	North/South line SOUTH	Feet from the 1969	East/West line WEST	County LEA
---------------------------	----------------------	-------------------------	----------------------	---------	-----------------------------	----------------------------------	------------------------------	-------------------------------	----------------------

¹² Dedicated Acres 160.00	¹³ Joint or Infill	¹⁴ Consolidation Code	¹⁵ Order No.
--	-------------------------------	----------------------------------	-------------------------

No allowable will be assigned to this completion until all interests have been consolidated or a non-standard unit has been approved by the division.



Project Area
Producing Area