

**DISTRICT IV**  
1220 S. St. Francis Dr., Santa Fe, NM 87505  
Phone (505) 476-3460 Fax: (505) 476-3462

Submit one copy to appropriate  
District Office

1220 South St. Francis Dr.  
Santa Fe, New Mexico 87505

☐ AMENDED REPORT

API Number 30-025-44294	Pool Code 96998	Pool Name PITCHFORK RANCH, WOLFE ARMY, GORET
Property Code 320511	Property Name OCOTILLO SUNRISE "15" WA AP FEE	Well Number 2H
OGRID No. 371502	Operator Name SANTO OPERATING, LLC	Elevation 3332'

UL or lot No.	Section	Township	Range	Lot Idn	Feet from the	SOUTH/South line	Feet from the	East/West line	County
A	15	25 S	34 E		150	NORTH	330	EAST	LEA

UL or lot No.	Section	Township	Range	Lot Idn	Feet from the	SOUTH/South line	Feet from the	East/West line	County
P	15	25 S	34 E		200	SOUTH	330	EAST	LEA

Dedicated Acres	Joint or Infill	Consolidation Code	Order No.
-----------------	-----------------	--------------------	-----------

NO ALLOWABLE WILL BE ASSIGNED TO THIS COMPLETION UNTIL ALL INTERESTS HAVE BEEN CONSOLIDATED  
OR A NON-STANDARD UNIT HAS BEEN APPROVED BY THE DIVISION

N.: 414941.2 E.: 809698.6 (NAD83)	<u>SURFACE LOCATION</u> Lat - N 32.137353 Long - W 103.450369 NMSPCE- N 414825.0 E 814641.7 (NAD-83)	N.: 414977.5 E.: 814970.6 (NAD83)
N.: 412300.4 E.: 809715.9 (NAD83)	<div style="font-size: 1.5em; font-weight: bold; margin-bottom: 5px;">BHLOC</div> <u>SURFACE LOCATION</u> Lat - N 32.123799 Long - W 103.450368 NMSPCE- N 409894.4 E 814682.6 (NAD-83)	N.: 409680.4 E.: 812373.3 (NAD83)

N.: 409662.1  
E.: 809732.3  
(NAD83)

N.: 409696.5  
E.: 815014.2  
(NAD83)

N.: 409662.1  
E.: 809732.3  
(NAD83)

N.: 409696.5  
E.: 815014.2  
(NAD83)

N.: 409662.1  
E.: 809732.3  
(NAD83)

N.: 409696.5  
E.: 815014.2  
(NAD83)

N.: 409662.1  
E.: 809732.3  
(NAD83)

N.: 409696.5  
E.: 815014.2  
(NAD83)

N.: 409662.1  
E.: 809732.3  
(NAD83)

N.: 409696.5  
E.: 815014.2  
(NAD83)

N.: 409662.1  
E.: 809732.3  
(NAD83)

N.: 409696.5  
E.: 815014.2  
(NAD83)

N.: 409662.1  
E.: 809732.3  
(NAD83)

N.: 409696.5  
E.: 815014.2  
(NAD83)

N.: 409662.1  
E.: 809732.3  
(NAD83)

N.: 409696.5  
E.: 815014.2  
(NAD83)

N.: 409662.1  
E.: 809732.3  
(NAD83)

N.: 409696.5  
E.: 815014.2  
(NAD83)

N.: 409662.1  
E.: 809732.3  
(NAD83)

N.: 409696.5  
E.: 815014.2  
(NAD83)

N.: 409662.1  
E.: 809732.3  
(NAD83)

N.: 409696.5  
E.: 815014.2  
(NAD83)

N.: 409662.1  
E.: 809732.3  
(NAD83)

N.: 409696.5  
E.: 815014.2  
(NAD83)

N.: 409662.1  
E.: 809732.3  
(NAD83)

N.: 409696.5  
E.: 815014.2  
(NAD83)

N.: 409662.1  
E.: 809732.3  
(NAD83)

N.: 409696.5  
E.: 815014.2  
(NAD83)

N.: 409662.1  
E.: 809732.3  
(NAD83)

N.: 409696.5  
E.: 815014.2  
(NAD83)

N.: 409662.1  
E.: 809732.3  
(NAD83)

N.: 409696.5  
E.: 815014.2  
(NAD83)

N.: 409662.1  
E.: 809732.3  
(NAD83)

N.: 409696.5  
E.: 815014.2  
(NAD83)

N.: 409662.1  
E.: 809732.3  
(NAD83)

N.: 409696.5  
E.: 815014.2  
(NAD83)

N.: 409662.1  
E.: 809732.3  
(NAD83)

N.: 409696.5  
E.: 815014.2  
(NAD83)

N.: 409662.1  
E.: 809732.3  
(NAD83)

N.: 409696.5  
E.: 815014.2  
(NAD83)

N.: 409662.1  
E.: 809732.3  
(NAD83)

N.: 409696.5  
E.: 815014.2  
(NAD83)

N.: 409662.1  
E.: 809732.3  
(NAD83)

N.: 409696.5  
E.: 815014.2  
(NAD83)

N.: 409662.1  
E.: 809732.3  
(NAD83)

N.: 409696.5  
E.: 815014.2  
(NAD83)

N.: 409662.1  
E.: 809732.3  
(NAD83)

N.: 409696.5  
E.: 815014.2  
(NAD83)

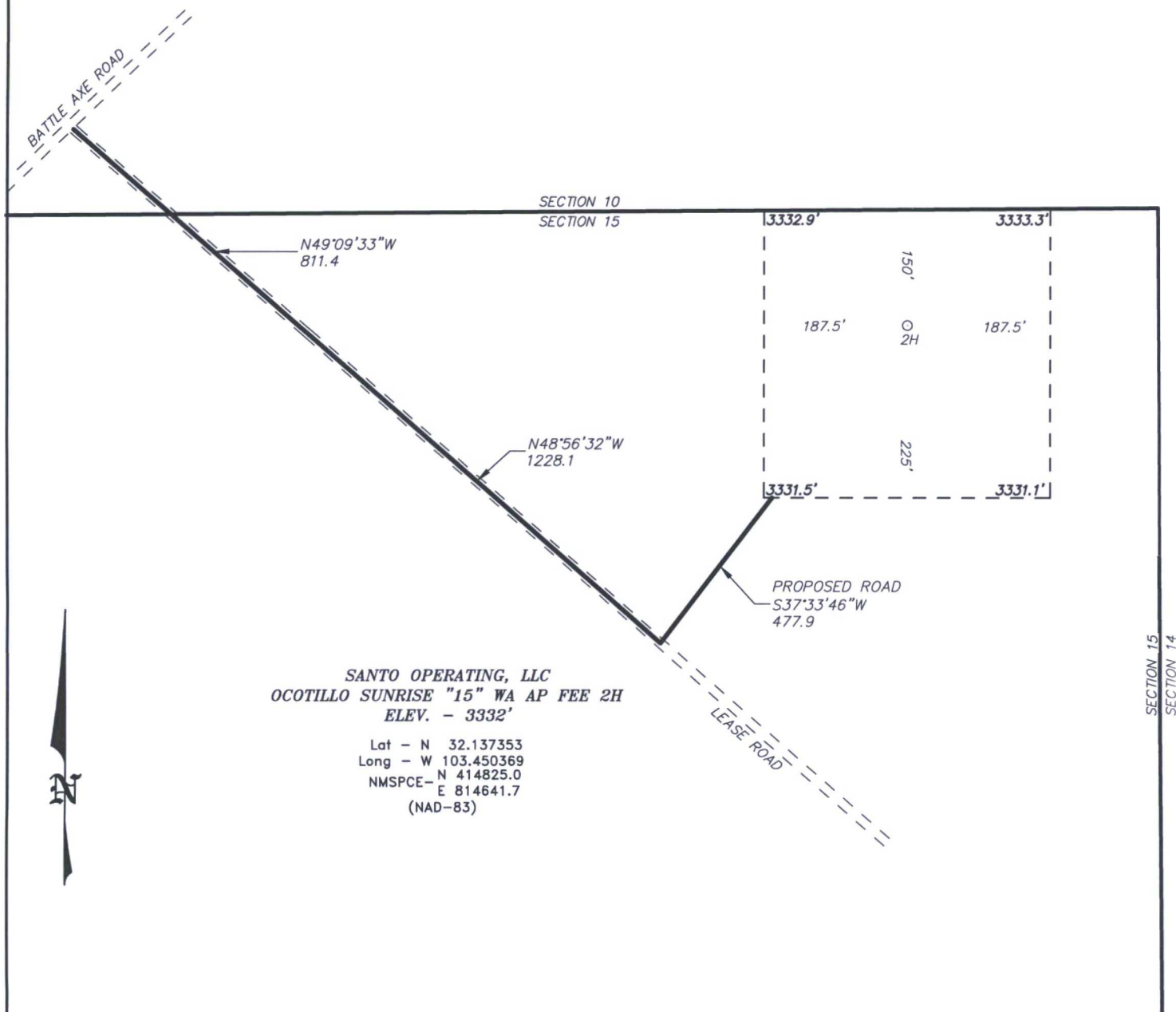
N.: 409662.1  
E.: 809732.3  
(NAD83)

N.: 409696.5  
E.: 815014.2  
(NAD83)

N.: 409662.1  
E.: 809732.3  
(NAD83)

N.: 409696.5  
E.: 815014.2  
(NAD83)

SECTION 15, TOWNSHIP 25 SOUTH, RANGE 34 EAST. N.M.P.M.,  
LEA COUNTY, NEW MEXICO.



SANTO OPERATING, LLC  
OCOTILLO SUNRISE "15" WA AP FEE 2H  
ELEV. - 3332'

Lat - N 32.137353  
Long - W 103.450369  
NMSPCE - N 414825.0  
E 814641.7  
(NAD-83)

JAL, NM IS ±15 MILES TO THE EAST OF LOCATION.  
200 0 200 400 FEET  
SCALE: 1" = 200'

Directions to Location:

FROM THE JUNCTION OF STATE HWY 128 AND  
BATTLE AXE ROAD, GO SOUTHWESTERLY ON BATTLE  
AXE ROAD FOR 5.6 MILES TO LEASE ROAD; THENCE  
SOUTHEAST ON LEASE ROAD FOR 0.4 MILES TO  
PROPOSED LEASE ROAD.

**basin**  
**surveys**  
focused on excellence  
in the oilfield

P.O. Box 1786 (575) 393-7316 - Office  
1120 N. West County Rd. (575) 392-2206 - Fax  
Hobbs, New Mexico 88241 basin-surveys.com

**SANTO OPERATING, LLC**

REF: OCOTILLO SUNRISE "15" WA AP FEE 2H / WELL PAD TOPO

THE OCOTILLO SUNRISE "15" WA AP FEE 2H LOCATED 150' FROM

THE NORTH LINE AND 330' FROM THE EAST LINE OF

SECTION 15, TOWNSHIP 25 SOUTH, RANGE 34 EAST.

N.M.P.M., LEA COUNTY, NEW MEXICO.

W.O. Number: 33388

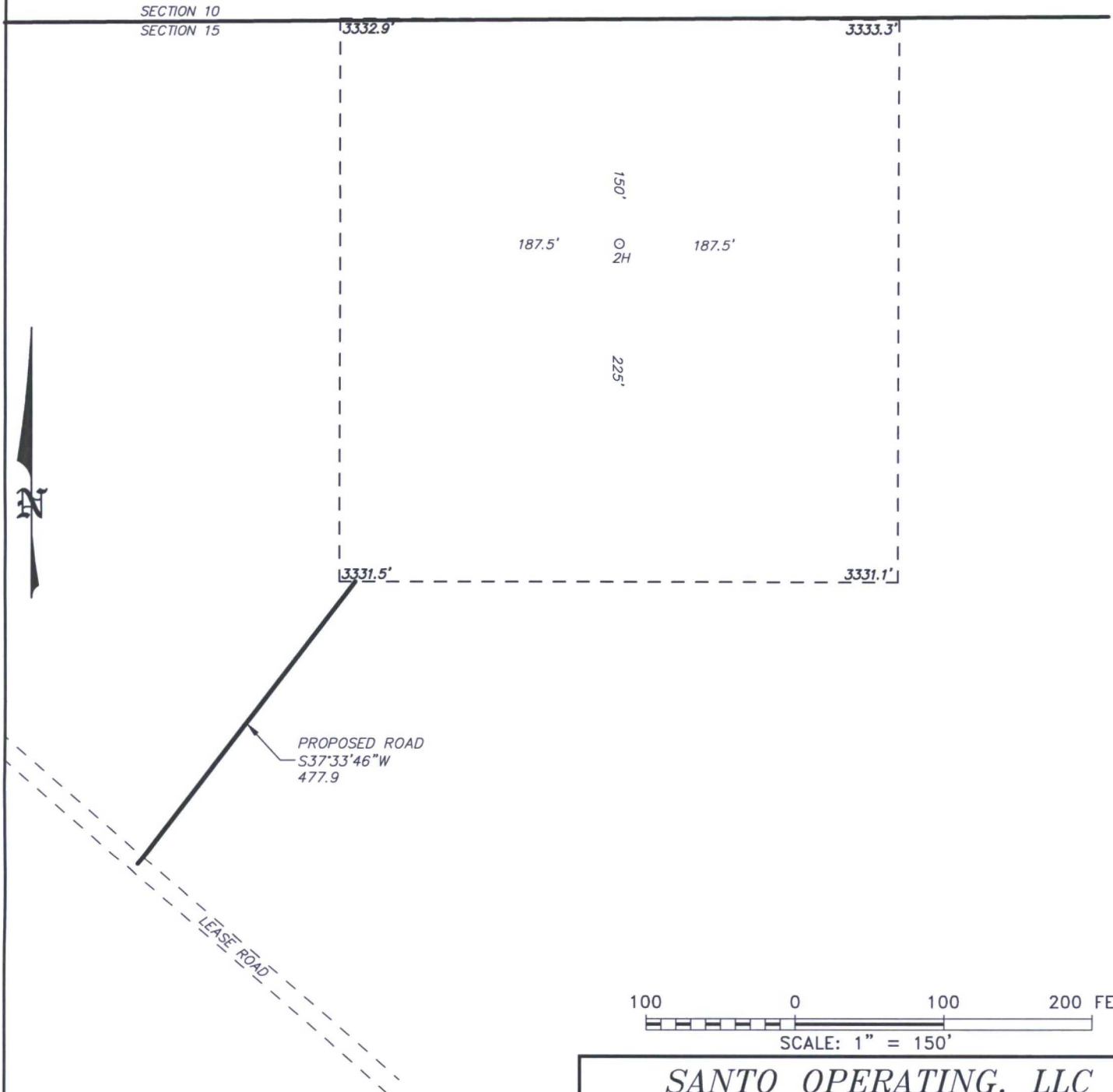
Drawn By: J GOAD

Date: 11-13-2017

Survey Date: 10-9-2017

Sheet 1 of 1 Sheets

SECTION 15, TOWNSHIP 25 SOUTH, RANGE 34 EAST. N.M.P.M.,  
LEA COUNTY, NEW MEXICO.



100 0 100 200 FEET  
SCALE: 1" = 150'

**SANTO OPERATING, LLC**

REF: OCOTILLO SUNRISE "15" WA AP FEE 2H / WELL PAD TOPO

THE OCOTILLO SUNRISE "15" WA AP FEE 2H LOCATED 150' FROM

THE NORTH LINE AND 330' FROM THE EAST LINE OF

SECTION 15, TOWNSHIP 25 SOUTH, RANGE 34 EAST.

N.M.P.M., LEA COUNTY, NEW MEXICO.

**basin**  
**surveys**  
focused on excellence  
in the oilfield

P.O. Box 1786  
1120 N. West County Rd.  
Hobbs, New Mexico 88241  
(575) 393-7316 - Office  
(575) 392-2206 - Fax  
basinsurveys.com

W.O. Number: 33388

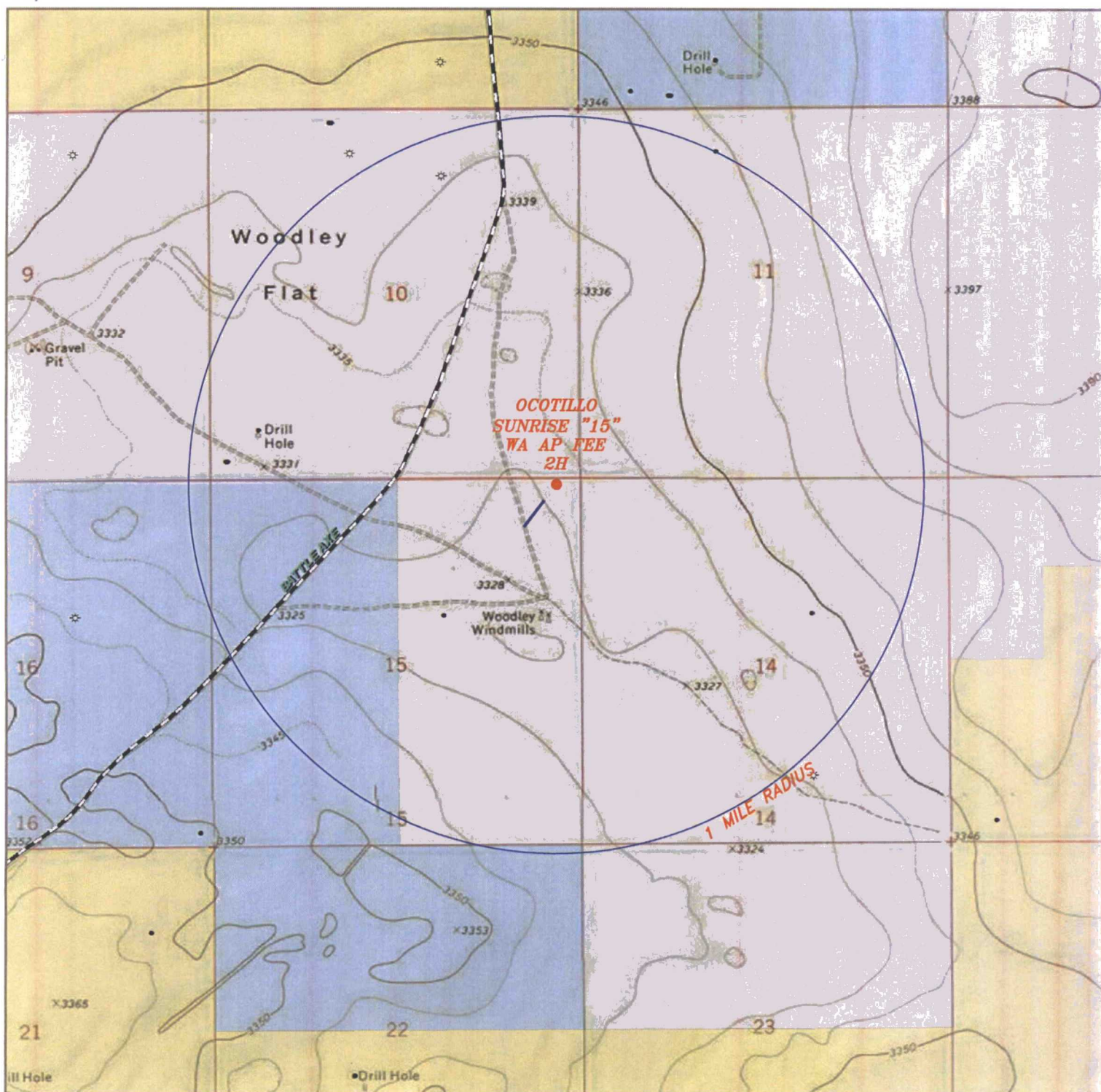
Drawn By: J GOAD

Date: 11-13-2017

Survey Date: 10-9-2017

Sheet 1 of 1 Sheets





## OCOTILLO SUNRISE "15" WA AP FEE 2H

Located 150' FNL and 330' FEL  
 Section 15, Township 25 South, Range 34 East,  
 N.M.P.M., Lea County, New Mexico.



P.O. Box 1786  
 1120 N. West County Rd.  
 Hobbs, New Mexico 88241  
 (575) 393-7316 - Office  
 (575) 392-2206 - Fax  
 basinsurveys.com

0' 1000' 2000' 3000' 1500'  
 SCALE: 1" = 2000'

W.O. Number: JG 33388

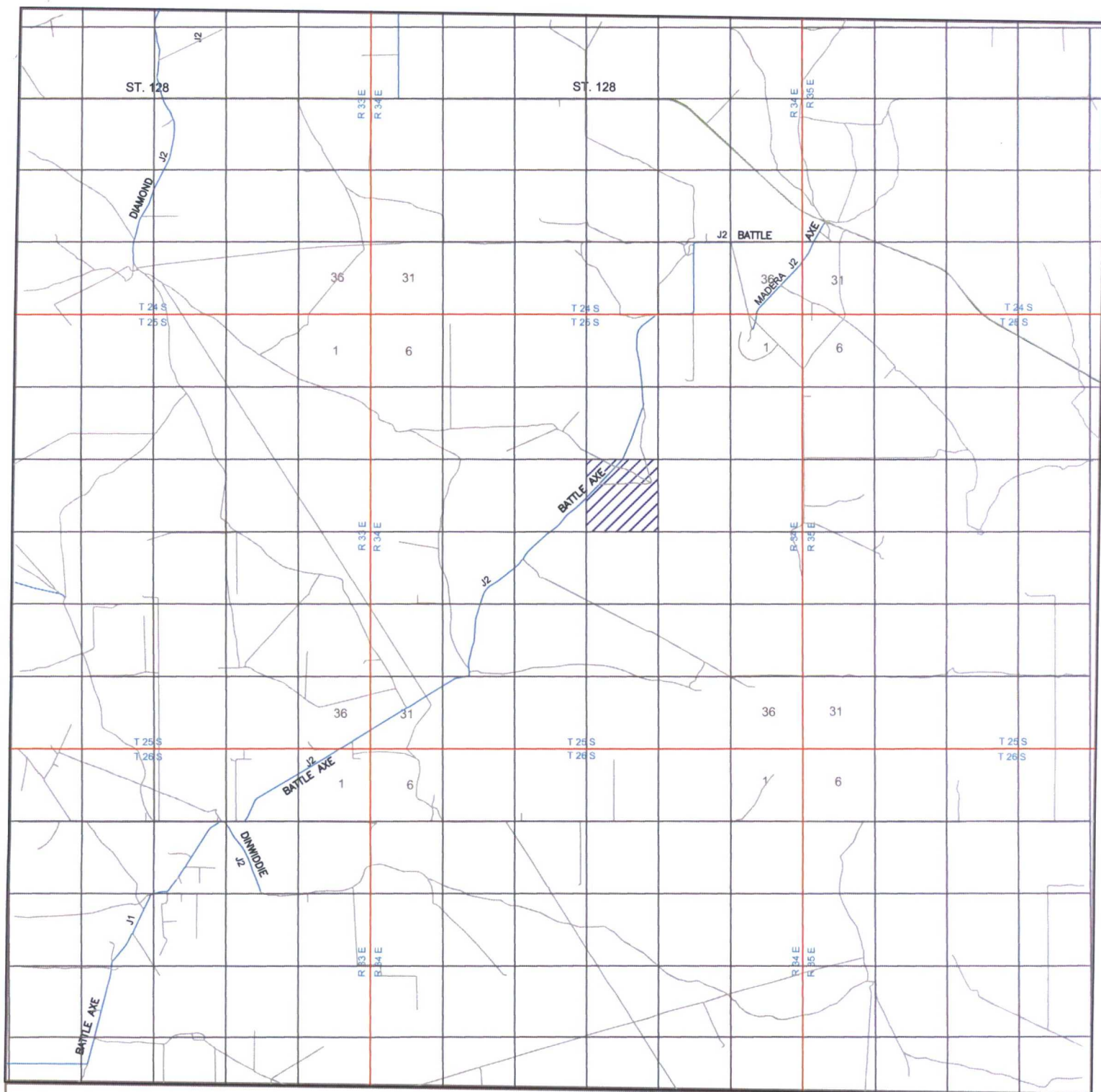
Survey Date: 10-9-2017

YELLOW TINT - USA LAND  
 BLUE TINT - STATE LAND  
 NATURAL COLOR - FEE LAND



SANTO





## OCOTILLO SUNRISE "15" WA AP FEE 2H

Located 150' FNL and 330' FEL  
 Section 15, Township 25 South, Range 34 East,  
 N.M.P.M., Lea County, New Mexico.



focused on excellence  
 in the oilfield

P.O. Box 1786  
 1120 N. West County Rd.  
 Hobbs, New Mexico 88241  
 (575) 393-7316 - Office  
 (575) 392-2206 - Fax  
[basinsurveys.com](http://basinsurveys.com)

0 1 MI 2 MI 3 MI 4 MI

SCALE: 1" = 2 MILES

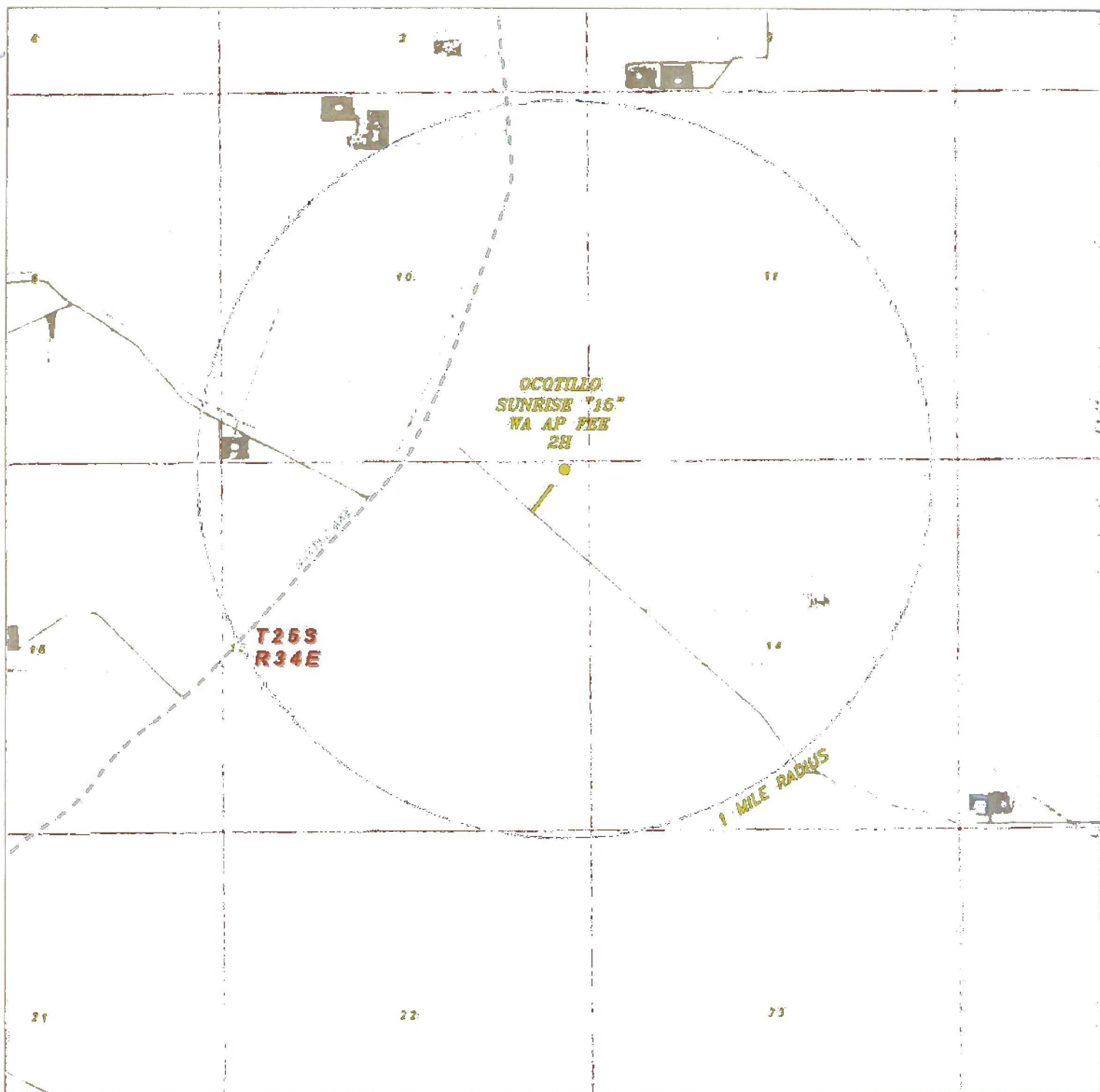
W.O. Number: JG 33388

Survey Date: 10-9-2017

YELLOW TINT - USA LAND  
 BLUE TINT - STATE LAND  
 NATURAL COLOR - FEE LAND



**SANTO**



## OCOTILLO SUNRISE "15" WA AP FEE 2H

Located 150' FNL and 330' FEL  
 Section 15, Township 25 South, Range 34 East,  
 N.M.P.M., Lea County, New Mexico.



P.O. Box 1786  
 1120 N. West County Rd.  
 Hobbs, New Mexico 88241  
 (575) 393-7316 - Office  
 (575) 392-2206 - Fax  
[basinsurveys.com](http://basinsurveys.com)

0' 1000' 2000' 3000' 1500'

SCALE: 1" = 2000'

W.O. Number: JG 33388

Survey Date: 10-9-2017

YELLOW TINT - USA LAND  
 BLUE TINT - STATE LAND  
 NATURAL COLOR - FEE LAND



SANTO