

DISTRICT IV
2040 South Pacheco, Santa Fe, NM 87505

State of New Mexico
Energy, Minerals and Natural Resources Department

Form C-102
August 1, 2011

RECEIVED

Submit one copy to Appropriate
District Office

OIL CONSERVATION DIVISION

1220 South St. Francis Dr.
Santa Fe, New Mexico 87505

#247253

☐ AMENDED REPORT

WELL LOCATION AND ACREAGE DEDICATION PLAT

API Number 30-025 - 44378	Pool Code 98098	Pool Name WC-025 G-09 S243532M; WOLFBONE
Property Code 317499	Property Name ANGUS STATE 24-35 18	Well Number 601H
OGRID No. 162928	Operator Name ENERGEN RESOURCES CORPORATION	Elevation 3382'

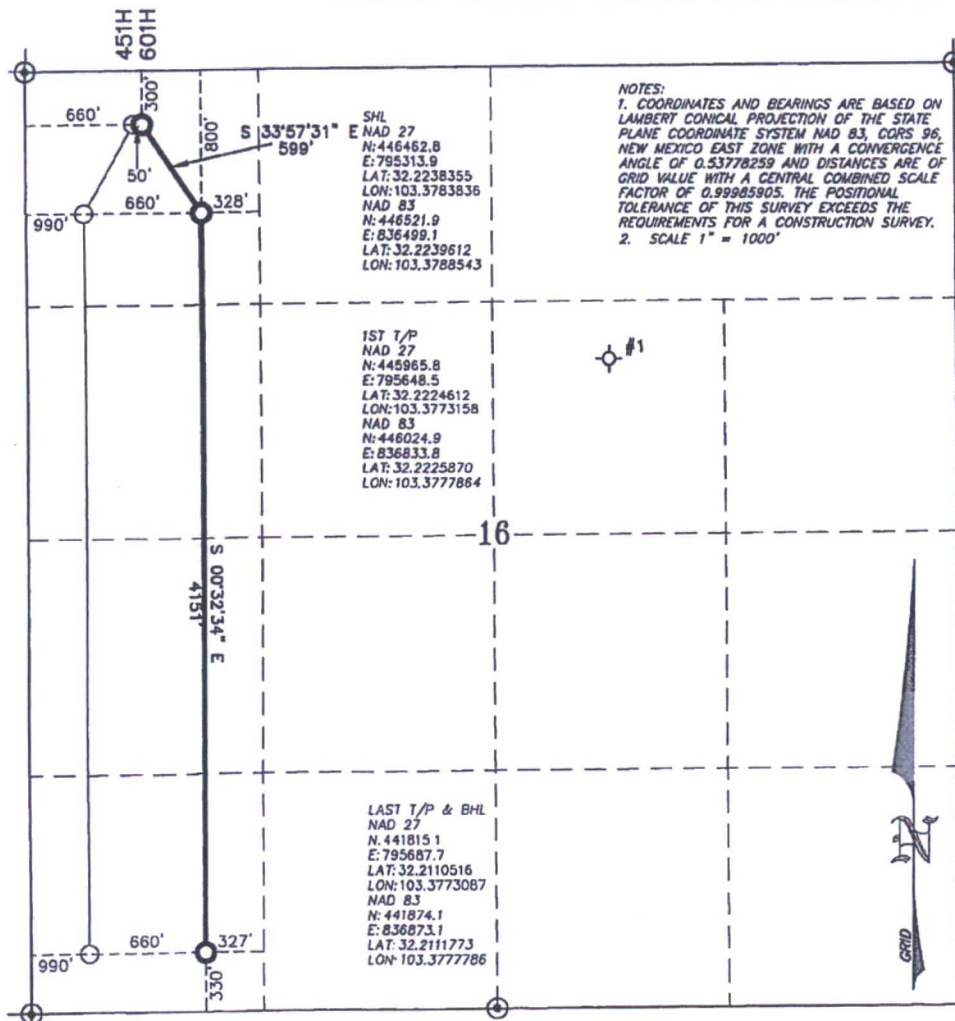
Surface Location

UL or lot No. <i>D</i>	Section 16	Township 24-S	Range 35-E	Lot Idn	Feet from the 300	North/South line NORTH	Feet from the 660	East/West line WEST	County LEA
---------------------------	---------------	------------------	---------------	---------	----------------------	---------------------------	----------------------	------------------------	---------------

Bottom Hole Location If Different From Surface

UL or lot No. M	Section 18	Township 24-S	Range 35-E	Lot Idn	Feet from the 330	North/South line SOUTH	Feet from the 990	East/West line WEST	County LEA
Dedicated Acres 160	Joint or Infill	Consolidation Code	Order No.						

NO ALLOWABLE WILL BE ASSIGNED TO THIS COMPLETION UNTIL ALL INTERESTS HAVE BEEN CONSOLIDATED
OR A NON-STANDARD UNIT HAS BEEN APPROVED BY THE DIVISION



OPERATOR CERTIFICATION

I hereby certify that the information contained herein is true and complete to the best of my knowledge and belief, and that this organization either owns a working interest or unleased mineral interest in the land including the proposed bottom hole location or has a right to drill this well at this location pursuant to a contract with an owner of such a mineral or working interest, or to a voluntary pooling agreement or compulsory pooling order heretofore entered by the division.

Brenda Flattjen 1/04/2008

Brenda F. Rathjen
Printed Name

Date 1/04/2018

SURVEYOR CERTIFICATION

I hereby certify that the well location shown on this plat was plotted from field notes of actual surveys made by me or under my supervision, and that the same is true and correct to the best of my belief.

NOVEMBER 13, 2011

Date Surveyed 1/25/2018

Signature: & Seal of

Professional Surveyor

No. 3

...

NEW MS

JANUARY 4, 2018

Signature Date 0. 11



Certificate No. WILSON

Certificate No. WILSON

NO 17-1241-00, FILE: 1 PROJECTS\NMV

WATSON PROFESSIONAL
