

DISTRICT I  
1625 N. French Dr., Hobbs, NM 88240  
Phone (505) 393-6161 Fax: (505) 393-0720

DISTRICT II  
811 S. First St., Artesia, NM 88210  
Phone (505) 748-1283 Fax: (505) 748-9720

DISTRICT III  
1000 Rio Brazos Rd., Aztec, NM 87410  
Phone (505) 334-6176 Fax: (505) 334-6170

DISTRICT IV  
1220 S. St. Francis Dr., Santa Fe, NM 87505  
Phone (505) 476-3460 Fax: (505) 476-3462

State of New Mexico  
Energy, Minerals and Natural Resources Department

**OIL CONSERVATION DIVISION**  
1220 South St. Francis Dr.  
Santa Fe, New Mexico 87505

Form C-102  
Revised August 1, 2011

Submit one copy to appropriate  
District Office

**WELL LOCATION AND ACREAGE DEDICATION PLAT**

☐ AMENDED REPORT

API Number <b>30-025-43883</b>	Pool Code <b>21650</b>	Pool Name <b>EK Bone Spring</b>
Property Code <b>315044</b>	Property Name <b>EK 30 BS2 FEDERAL COM</b>	Well Number <b>2H</b>
OGRID No. <b>22044</b>	Operator Name <b>McELVAIN ENERGY, INC</b>	Elevation <b>3894</b>

**Surface Location**

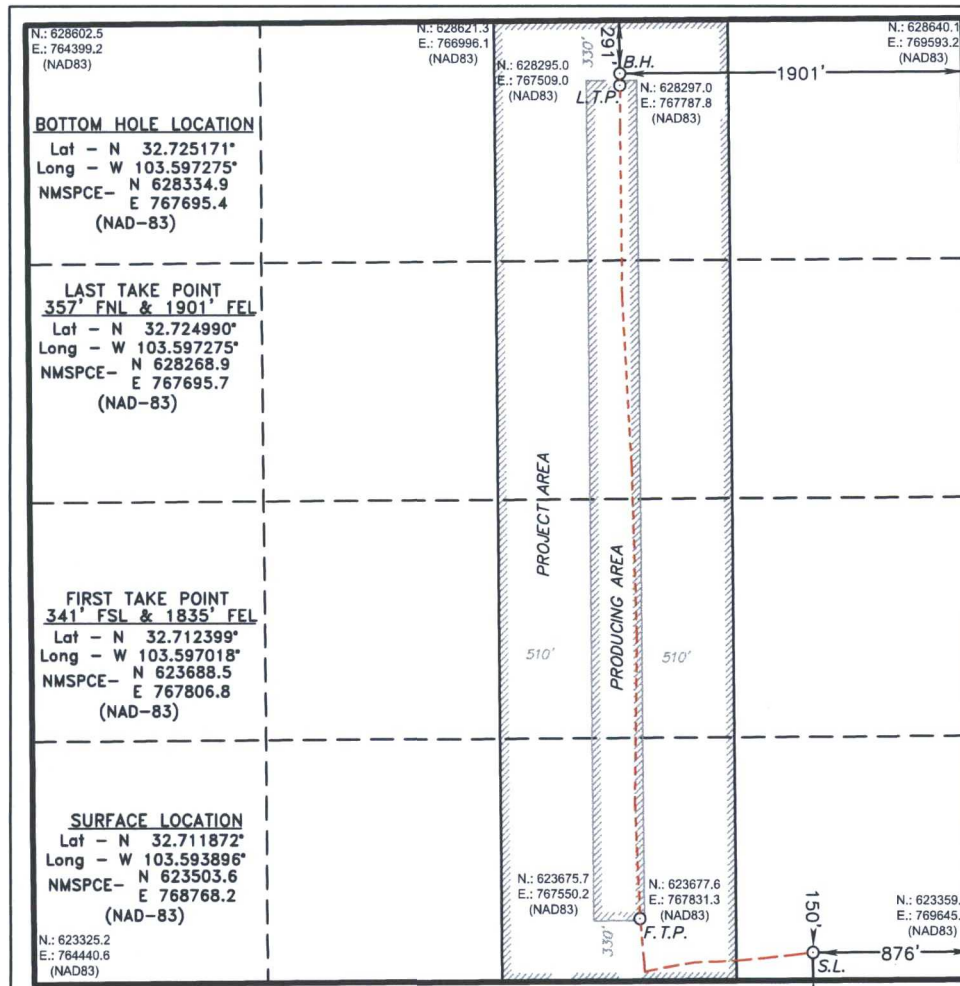
UL or lot No.	Section	Township	Range	Lot Idn	Feet from the	North/South line	Feet from the	East/West line	County
P	30	18 S	34 E		150	SOUTH	876	EAST	LEA

**Bottom Hole Location If Different From Surface**

UL or lot No.	Section	Township	Range	Lot Idn	Feet from the	North/South line	Feet from the	East/West line	County
B	30	18 S	34 E		291	NORTH	1901	EAST	LEA

Dedicated Acres <b>3.1160</b>	Joint or Infill <b>Y</b>	Consolidation Code <b>C</b>	Order No.
----------------------------------	-----------------------------	--------------------------------	-----------

**NO ALLOWABLE WILL BE ASSIGNED TO THIS COMPLETION UNTIL ALL INTERESTS HAVE BEEN CONSOLIDATED  
OR A NON-STANDARD UNIT HAS BEEN APPROVED BY THE DIVISION**



**OPERATOR CERTIFICATION**

I hereby certify that the information contained herein is true and complete to the best of my knowledge and belief, and that this organization either owns a working interest or unleased mineral interest in the land including the proposed bottom hole location or has a right to drill this well at this location pursuant to a contract with an owner of such a mineral or working interest, or to a voluntary pooling agreement or a compulsory pooling order heretofore entered by the division.

*Chris Caplis* 1/3/18  
Signature Date  
Printed Name  
Email Address  
[chris.caplis@mcelvain.com](mailto:chris.caplis@mcelvain.com)

**SURVEYOR CERTIFICATION**

I hereby certify that the well location shown on this plat was plotted from field notes of actual surveys made by me or under my supervision, and that the same is true and correct to the best of my belief.

DATE SURVEYED  
Signature & Seal of Professional Surveyor  
Certificate No. 7977  
BASIC SURVEY

0' 500' 1000' 1500' 2000'  
SCALE: 1" = 1000'  
WO Num.: 33398