

District I  
1625 N. French Dr., Hobbs, NM 88240  
Phone: (575) 393-6161 Fax: (575) 393-0720  
District II  
811 S. First St., Artesia, NM 88210  
Phone: (575) 748-1283 Fax: (575) 748-9720  
District III  
1000 Rio Brazos Road, Aztec, NM 87410  
Phone: (505) 334-6178 Fax: (505) 334-6170  
District IV  
1220 S. St. Francis Dr., Sante Fe, NM 87505  
Phone: (505) 476-3460 Fax: (505) 476-3462

State of New Mexico  
Energy, Minerals & Natural Resources  
Department  
OIL CONSERVATION DIVISION  
1220 South St. Francis Dr.  
Sante Fe, NM 87505

FORM C-102

Revised August 1, 2011

Submit one copy to appropriate

District Office

RECEIVED

☐ AMENDED REPORT

WELL LOCATION AND ACREAGE DEDICATION PLAT

<sup>1</sup> API Number 30-025- <b>44550</b>	<sup>2</sup> Pool Code 5695	<sup>3</sup> Pool Name BILBREY BASIN; BONE SPRING
<sup>4</sup> Property Code <b>320841</b>	<sup>5</sup> Property Name NINA CORTELL FED COM	<sup>6</sup> Well Number <b>#124H</b>
<sup>7</sup> GRID No. 228937	<sup>8</sup> Operator Name MATADOR PRODUCTION COMPANY	<sup>9</sup> Elevation 3789'

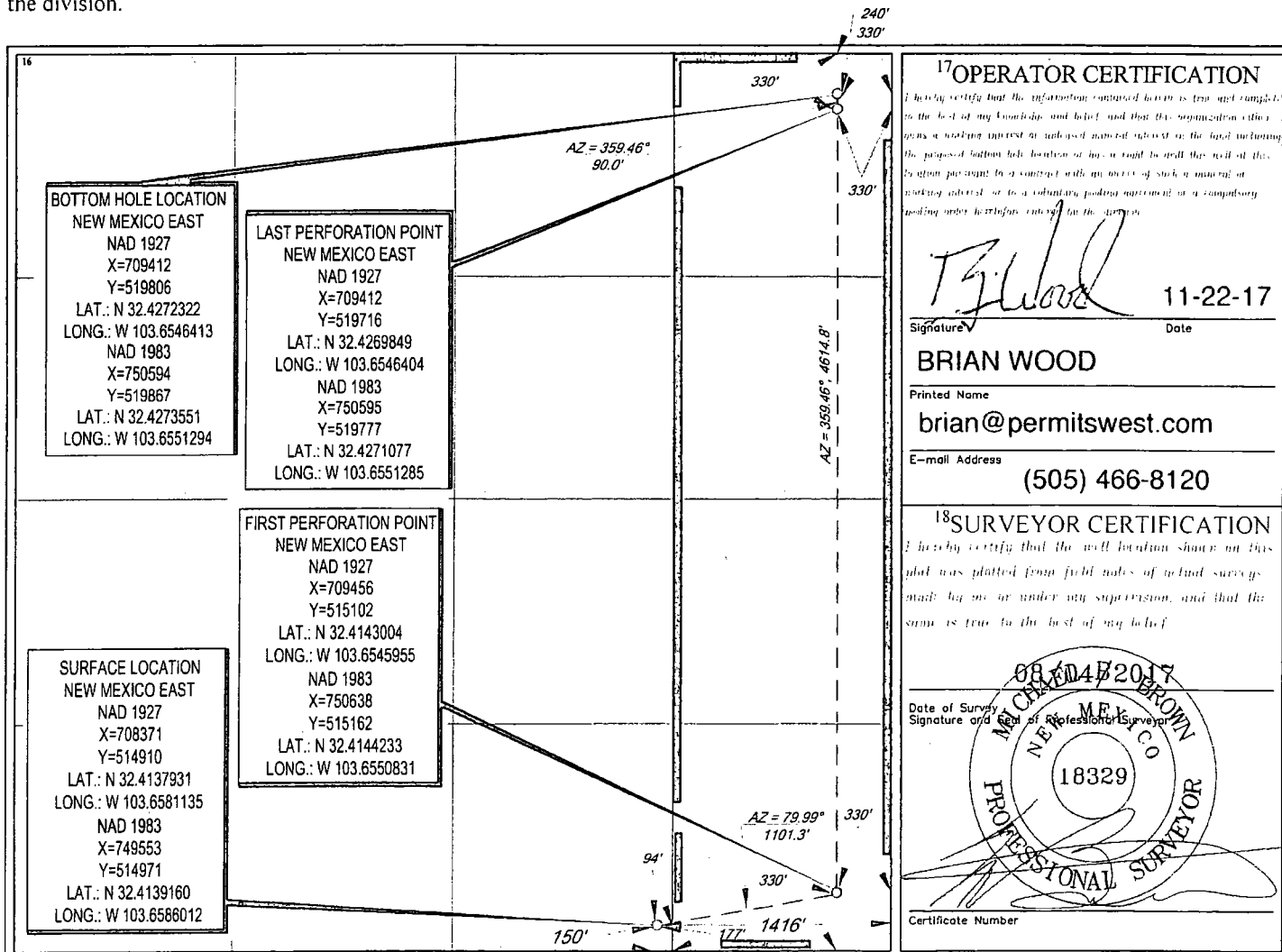
<sup>10</sup>Surface Location

UL or lot no.	Section	Township	Range	Lot Idn	Feet from the	North/South line	Feet from the	East/West line	County
0	3	22-S	32-E	-	150'	SOUTH	1416'	EAST	LEA

UL or lot no.	Section	Township	Range	Lot Idn	Feet from the	North/South line	Feet from the	East/West line	County
1	3	22-S	32-E	-	240'	NORTH	330'	EAST	LEA

<sup>12</sup> Dedicated Acres 159.92	<sup>13</sup> Joint or Infill	<sup>14</sup> Consolidation Code C	<sup>15</sup> Order No.
---	-------------------------------	---------------------------------------	-------------------------

No allowable will be assigned to this completion until all interests have been consolidated or a non-standard unit has been approved by the division.



<sup>17</sup>OPERATOR CERTIFICATION

I hereby certify that the information contained herein is true and complete to the best of my knowledge and belief, and that the organization either owns a working interest or undivided mineral interest in the land underlying the proposed bottom hole location or has a right to drill this well at this location pursuant to a contract with an owner of such a mineral or working interest or to a voluntary pooling agreement or a compulsory pooling order heretofore entered for the operation.

*Brian Wood* 11-22-17  
Signature Date

**BRIAN WOOD**  
Printed Name  
brian@permitswest.com

E-mail Address  
(505) 466-8120

<sup>18</sup>SURVEYOR CERTIFICATION

I hereby certify that the well location shown on this plat was plotted from field notes of actual surveys made by me or under my supervision, and that the same is true to the best of my belief.

08/04/2017  
Date of Survey  
Signature and Seal of Professional Surveyor  
18329  
Certificate Number