

**DISTRICT IV**  
2040 South Pacheco, Santa Fe, NM 87505

Submit one copy to Appropriate  
District Office

1220 South St. Francis Dr.  
Santa Fe, New Mexico 87505

Certificate No. WILSON D. WATSON JR.  
P.L.S. #3959  
WO#17-1141-00, FILE: T:PROJECTS\W\WLEA\7245.RDSE  
WATSON PROFESSIONAL GROUP INC

DISTRICT I  
1625 N. French Dr., Hobbs, NM 88240  
DISTRICT II  
811 South First, Artesia, NM 88210  
DISTRICT III  
1000 Rio Brazos Rd., Artec, NM 87410  
DISTRICT IV  
2040 South Pacheco, Santa Fe, NM 87505

State of New Mexico  
Energy, Minerals and Natural Resources Department

Form C-102  
Revised August 1, 2011

Submit one copy to Appropriate  
District Office

OIL CONSERVATION DIVISION

1220 South St. Francis Dr.  
Santa Fe, New Mexico 87505

☐ AMENDED REPORT

WELL LOCATION AND ACREAGE DEDICATION PLAT

API Number	Pool Code 98098	Pool Name WC-025 G-09 S243532M; WOLFBONE
Property Code 317499	Property Name ANGUS STATE 24-35 16	Well Number 605H
OGRID No. 162928	Operator Name ENERGEN RESOURCES CORPORATION	Elevation 3372'

Surface Location

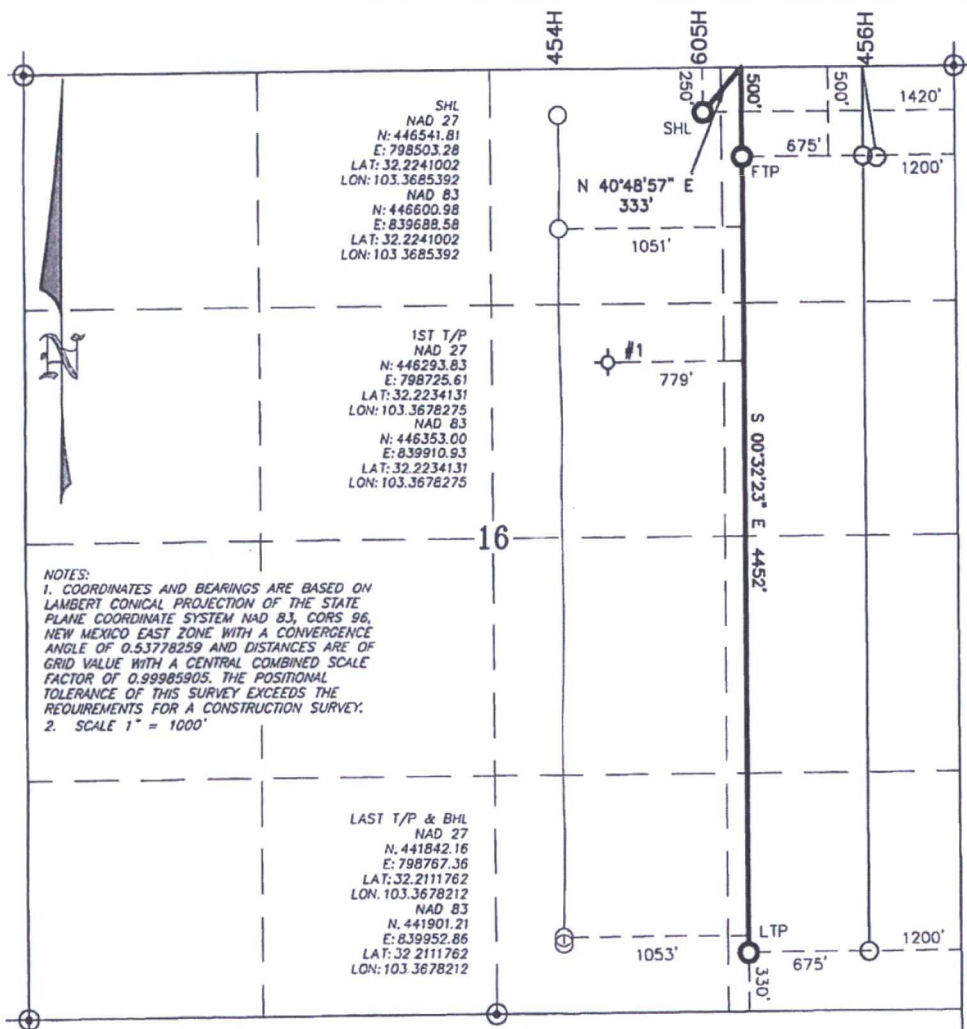
UL or lot No. B	Section 16	Township 24-S	Range 35-E	Lot Idn	Feet from the 250	North/South line NORTH	Feet from the 1420	East/West line EAST	County LEA
--------------------	---------------	------------------	---------------	---------	----------------------	---------------------------	-----------------------	------------------------	---------------

Bottom Hole Location If Different From Surface

UL or lot No. P	Section 16	Township 24-S	Range 35-E	Lot Idn	Feet from the 330	North/South line SOUTH	Feet from the 1200	East/West line EAST	County LEA
--------------------	---------------	------------------	---------------	---------	----------------------	---------------------------	-----------------------	------------------------	---------------

Dedicated Acres 160	Joint or Infill	Consolidation Code	Order No.
------------------------	-----------------	--------------------	-----------

NO ALLOWABLE WILL BE ASSIGNED TO THIS COMPLETION UNTIL ALL INTERESTS HAVE BEEN CONSOLIDATED  
OR A NON-STANDARD UNIT HAS BEEN APPROVED BY THE DIVISION



OPERATOR CERTIFICATION

I hereby certify that the information contained herein is true and complete to the best of my knowledge and belief, and that this organization either owns a working interest or unleased mineral interest in the land including the proposed bottom hole location or has a right to drill this well at this location pursuant to a contract with an owner of such a mineral or working interest, or to a voluntary pooling agreement or compulsory pooling order heretofore entered by the division.

*Brenda F. Rathjen*  
Signature  
Brenda F. Rathjen  
Printed Name  
3/08/2018  
Date

SURVEYOR CERTIFICATION

I hereby certify that the well location shown on this plat was plotted from field notes of actual surveys made by me, or under my supervision, and that the same are true and correct to the best of my knowledge and belief.

*Wilson D. Watson Jr.*  
Signature  
FEBRUARY 20, 2018  
Date Surveyed  
No. 3959  
Professional Surveyor  
STATE OF NEW MEXICO  
WATSON PROFESSIONAL GROUP INC.

MARCH 2, 2018

Signature Date

Certificate No. WILSON D. WATSON JR.  
P.L.S. #3959  
WATSON PROFESSIONAL GROUP INC