

UNITED STATES  
DEPARTMENT OF THE INTERIOR  
BUREAU OF LAND MANAGEMENT

OCD Hobbs

HOBBS OCD

FORM APPROVED  
OMB No. 1004-0137  
Expires: July 31, 2010

## WELL COMPLETION OR RECOMPLETION REPORT AND LOG

5. Lease Serial No.  
NMNM815991a. Type of Well ☒ Oil Well ☐ Gas Well ☐ Dry ☐ Otherb. Type of Completion ☒ New Well ☐ Work Over ☐ Deepen ☐ Plug Back ☐ Diff. Resvr.  
Other \_\_\_\_\_

6. If Indian, Allottee or Tribe Name

7. Unit or CA Agreement Name and No.

2. Name of Operator  
CENTENNIAL RESOURCE PRODUCTION, INC. Contact: MELISSA A LUKE  
MELISSA.LUKE@CDEVINC.COM8. Lease Name and Well No.  
CRAZY WOLF 1/ B2MM FED 1H3. Address 1001 17TH STREET SUITE 1800  
DENVER, CO 802023a. Phone No. (include area code)  
Ph: 720-499-14829. API Well No.  
30-025-43135-00-S1

4. Location of Well (Report location clearly and in accordance with Federal requirements)\*

At surface Sec 1 T19S R32E Mer NMP  
SWSW 330FSL 1290FWLAt top prod interval reported below  
Sec 2 T19S R32E Mer NMP  
At total depth SWSW 330FSL 332FWL10. Field and Pool, or Exploratory  
TONTO11. Sec., T., R., M., or Block and Survey  
or Area Sec 1 T19S R32E Mer NMP12. County or Parish  
LEA13. State  
NM14. Date Spudded  
11/03/201715. Date T.D. Reached  
12/16/201716. Date Completed  
☐ D & A ☒ Ready to Prod.  
01/16/201817. Elevations (DF, KB, RT, GL)\*  
3694 KB18. Total Depth: MD 16500  
TVD 947019. Plug Back T.D.: MD 16425  
TVD20. Depth Bridge Plug Set: MD  
TVD21. Type Electric & Other Mechanical Logs Run (Submit copy of each)  
3694 KB22. Was well cored? ☒ No ☐ Yes (Submit analysis)  
Was DST run? ☒ No ☐ Yes (Submit analysis)  
Directional Survey? ☐ No ☒ Yes (Submit analysis)

## 23. Casing and Liner Record (Report all strings set in well)

Hole Size	Size/Grade	Wt. (#/ft.)	Top (MD)	Bottom (MD)	Stage Cementer Depth	No. of Sk. & Type of Cement	Slurry Vol. (BBL)	Cement Top*	Amount Pulled
17.500	13.375 J-55	54.5	25	1503	1513	1535	313	0	
12.250	9.625 J-55	40.0	25	5160	5170	1195	547	0	
8.750	5.500 P-110	20.0	25	16489	16500	2660	924	0	

## 24. Tubing Record

Size	Depth Set (MD)	Packer Depth (MD)	Size	Depth Set (MD)	Packer Depth (MD)	Size	Depth Set (MD)	Packer Depth (MD)
2.875	9339							

## 25. Producing Intervals

## 26. Perforation Record

Formation	Top	Bottom	Perforated Interval	Size	No. Holes	Perf. Status
A) BONE SPRING 2ND	9960	16410	9960 TO 16410	0.000	2082	OPEN - Bone Springs 2nd
B)						
C)						
D)						

## 27. Acid, Fracture, Treatment, Cement Squeeze, Etc.

Depth Interval	Amount and Type of Material
9960 TO 16410	16,690.980LBM PROPANT
9960 TO 16410	14,949.808GALS FULID

## 28. Production - Interval A

Date First Produced	Test Date	Hours Tested	Test Production	Oil BBL	Gas MCF	Water BBL	Oil Gravity Corr. API	Gas Gravity	Production Method
01/22/2018	02/05/2018	24	→	544.0	4022.0	2150.0			ELECTRIC PUMPING UNIT
Choke Size	Tbg. Press. Flwg.	Csg. Press.	24 Hr. Rate	Oil BBL	Gas MCF	Water BBL	Gas:Oil Ratio	Well Status	
48	SI	205.0	→	544	4022	2150	7393	POW	

## 28a. Production - Interval B

Date First Produced	Test Date	Hours Tested	Test Production	Oil BBL	Gas MCF	Water BBL	Oil Gravity Corr. API	Gas Gravity	Production Method
			→						
Choke Size	Tbg. Press. Flwg.	Csg. Press.	24 Hr. Rate	Oil BBL	Gas MCF	Water BBL	Gas:Oil Ratio	Well Status	
	SI		→						

(See Instructions and spaces for additional data on reverse side)

ELECTRONIC SUBMISSION #406950 VERIFIED BY THE BLM WELL INFORMATION SYSTEM

\*\* BLM REVISED \*\* BLM REVISED \*\* BLM REVISED \*\* BLM REVISED \*\* BLM REVISED \*\*

Reclamation Due: 7/16/2018



Kz

## 28b. Production - Interval C

Date First Produced	Test Date	Hours Tested	Test Production	Oil BBL	Gas MCF	Water BBL	Oil Gravity Corr. API	Gas Gravity	Production Method
			→						
Choke Size	Tbg. Press. Flwg. SI	Csg. Press.	24 Hr. Rate	Oil BBL	Gas MCF	Water BBL	Gas:Oil Ratio	Well Status	
			→						

## 28c. Production - Interval D

Date First Produced	Test Date	Hours Tested	Test Production	Oil BBL	Gas MCF	Water BBL	Oil Gravity Corr. API	Gas Gravity	Production Method
			→						
Choke Size	Tbg. Press. Flwg. SI	Csg. Press.	24 Hr. Rate	Oil BBL	Gas MCF	Water BBL	Gas:Oil Ratio	Well Status	
			→						

29. Disposition of Gas(Sold, used for fuel, vented, etc.)  
UNKNOWN

## 30. Summary of Porous Zones (Include Aquifers):

Show all important zones of porosity and contents thereof: Cored intervals and all drill-stem tests, including depth interval tested, cushion used, time tool open, flowing and shut-in pressures and recoveries.

## 31. Formation (Log) Markers

Formation	Top	Bottom	Descriptions, Contents, etc.	Name	Top
					Meas. Depth
BASE OF SALT	4185	3164	BASE OF SALT	BASE OF SALT BONE SPRING	4185 7381

32. Additional remarks (include plugging procedure):

## 33. Circle enclosed attachments:

- |   |                    |               |                       |
|---|--------------------|---------------|-----------------------|
| 1. Electrical/Mechanical Logs (1 full set req'd.)     | 2. Geologic Report | 3. DST Report | 4. Directional Survey |
| 5. Sundry Notice for plugging and cement verification | 6. Core Analysis   | 7. Other:     |                       |

34. I hereby certify that the foregoing and attached information is complete and correct as determined from all available records (see attached instructions):

**Electronic Submission #406950 Verified by the BLM Well Information System.**  
**For CENTENNIAL RESOURCE PRODUCTION, sent to the Hobbs**  
**Committed to AFMSS for processing by DUNCAN WHITLOCK on 03/12/2018 (18DW0099SE)**

Name (please print) MELISSA A LUKE

Title SR. REGULATORY ANALYST

Signature \_\_\_\_\_ (Electronic Submission)

Date 03/07/2018

Title 18 U.S.C. Section 1001 and Title 43 U.S.C. Section 1212, make it a crime for any person knowingly and willfully to make to any department or agency of the United States any false, fictitious or fraudulent statements or representations as to any matter within its jurisdiction.

\*\* REVISED \*\* REVISED \*\* REVISED \*\* REVISED \*\* REVISED \*\* REVISED \*\* REVISED \*\*



District I  
1625 N. French Dr., Hobbs, NM 88240  
Phone: (575) 393-6161 Fax: (575) 393-0720  
District II  
811 S. First St., Artesia, NM 88210  
Phone: (575) 748-1283 Fax: (575) 748-9720  
District III  
1000 Rio Brazos Road, Aztec, NM 87410  
Phone: (505) 334-6178 Fax: (505) 334-6170  
District IV  
1220 S. St. Francis Dr., Santa Fe, NM 87505  
Phone: (505) 476-3460 Fax: (505) 476-3462

State of New Mexico  
Energy, Minerals & Natural Resources Department  
OIL CONSERVATION DIVISION  
1220 South St. Francis Dr.  
Santa Fe, NM 87505

Form C-102  
Revised August 1, 2011  
Submit one copy to appropriate  
District Office

☐ AMENDED REPORT

WELL LOCATION AND ACREAGE DEDICATION PLAT

<sup>1</sup> API Number 30-025-43135	<sup>2</sup> Pool Code	<sup>3</sup> Pool Name Tonto
<sup>4</sup> Property Code	<sup>5</sup> Property Name CRAZY WOLF 1/2 B2MM FEDERAL COM	<sup>6</sup> Well Number 1H
<sup>7</sup> OGRID No. 141077	<sup>8</sup> Operator Name CENTENNIAL RESOURCE PRODUCTION, LLC	<sup>9</sup> Elevation 3670.5'

<sup>10</sup> Surface Location

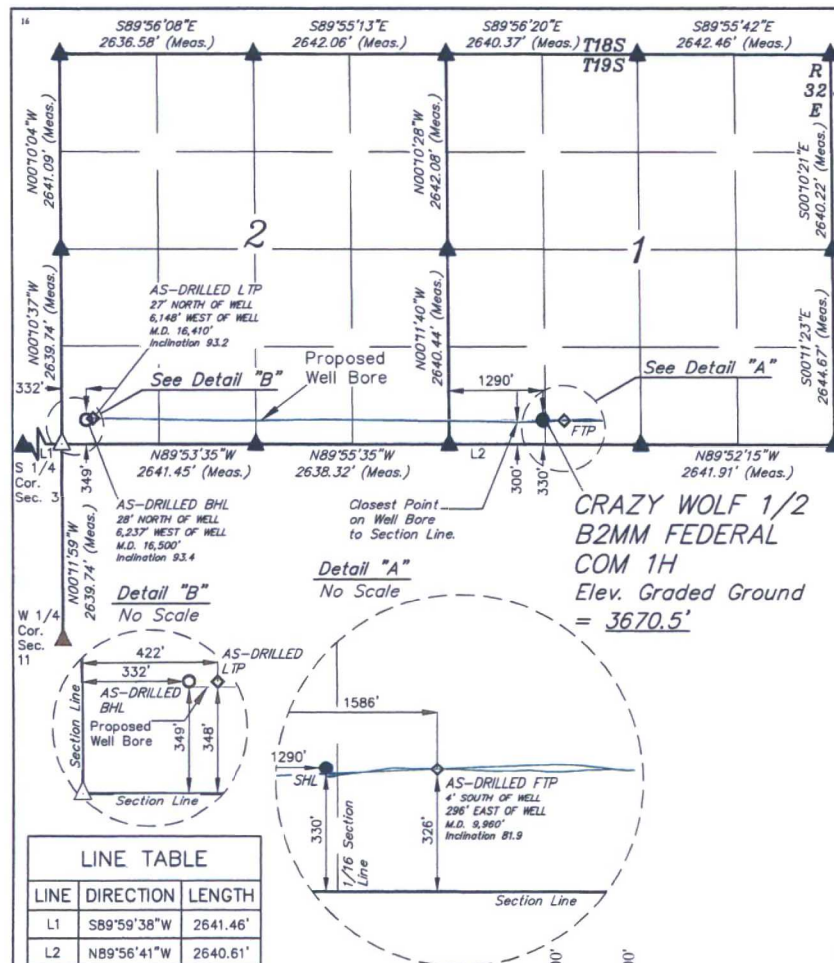
UL or lot no.	Section	Township	Range	Lot Idn	Feet from the	North/South line	Feet from the	East/West line	County
M	1	19S	32E		330	SOUTH	1290	WEST	LEA

<sup>11</sup> Bottom Hole Location If Different From Surface

UL or lot no.	Section	Township	Range	Lot Idn	Feet from the	North/South line	Feet from the	East/West line	County
M	2	19S	32E		349		332	WEST	LEA

<sup>12</sup> Dedicated Acres 240	<sup>13</sup> Joint or Infill	<sup>14</sup> Consolidation Code	<sup>15</sup> Order No.
--------------------------------------	-------------------------------	----------------------------------	-------------------------

No allowable will be assigned to this completion until all interests have been consolidated or a non-standard unit has been approved by the division.



LINE TABLE		
LINE	DIRECTION	LENGTH
L1	S89°59'38"W	2641.46'
L2	N89°56'41"W	2640.61'

NOTE:

- Distances referenced on plat to section lines are perpendicular.
- Basis of Bearings is a Transverse Mercator Projection with a Central Meridian of W103°53'00"
- Well Bore data provided by Centennial Resource Production, LLC

- = SURFACE HOLE LOCATION
  - ◆ = AS-DRILLED PP/FTP/LTP
  - ◇ = AS-DRILLED BHL
  - ▲ = SECTION CORNER LOCATED
  - △ = SECTION CORNER RE-ESTABLISHED.
- (Not Set on Ground.)

NAD 83 (AS-DRILLED SHL) LATITUDE = 32°40'58.88" (32.683021°) LONGITUDE = 103°43'27.02" (103.724171°) STATE PLANE NAD 83 (N.M. EAST) Y: 612752.26' X: 728758.67' UTM, NAD 83 (ZONE 13) Y: 11866336.88' X: 2032840.70'	NAD 83 (AS-DRILLED LTP) LATITUDE = 32°40'59.22" (32.683118°) LONGITUDE = 103°44'38.93" (103.744148°) STATE PLANE NAD 83 (N.M. EAST) Y: 612752.69' X: 722612.23' UTM, NAD 83 (ZONE 13) Y: 11866298.69' X: 2026695.46'
--	--

NAD 83 (AS-DRILLED FTP) LATITUDE = 32°40'58.83" (32.683009°) LONGITUDE = 103°43'23.55" (103.723209°) STATE PLANE NAD 83 (N.M. EAST) Y: 612749.39' X: 729054.72' UTM, NAD 83 (ZONE 13) Y: 11866335.86' X: 2033136.71'	NAD 83 (AS-DRILLED BHL) LATITUDE = 32°40'59.24" (32.683121°) LONGITUDE = 103°44'39.98" (103.744440°) STATE PLANE NAD 83 (N.M. EAST) Y: 612753.55' X: 722522.41' UTM, NAD 83 (ZONE 13) Y: 11866298.98' X: 2026605.64'
--	--

<sup>16</sup> OPERATOR CERTIFICATION

I hereby certify that the information contained herein is true and complete to the best of my knowledge and belief, and that this organization either owns a working interest or unleased mineral interest in the land including the proposed bottom hole location or has a right to drill this well at this location pursuant to a contract with an owner of such a mineral or working interest, or to a voluntary pooling agreement or a compulsory pooling order heretofore entered by the division.

Digitally signed by Melissa Luke  
DN: cn=Melissa Luke, ou=Oil  
Conservation Division, o=New Mexico  
Energy, Minerals & Natural Resources  
Production, email=Melissa.Luke@cdevinc.com,  
Date: 2018.02.27 12:13:02 -0700

Melissa Luke  
Printed Name  
melissa.luke@cdevinc.com  
E-mail Address

<sup>17</sup> SURVEYOR CERTIFICATION

I hereby certify that the well location shown on this plat was plotted from field notes of actual surveys made by me or under my supervision, and that the same is true and correct to the best of my belief.

February 14, 2018

Date of Survey  
Signature and Seal of Professional Surveyor:



Certificate Number: