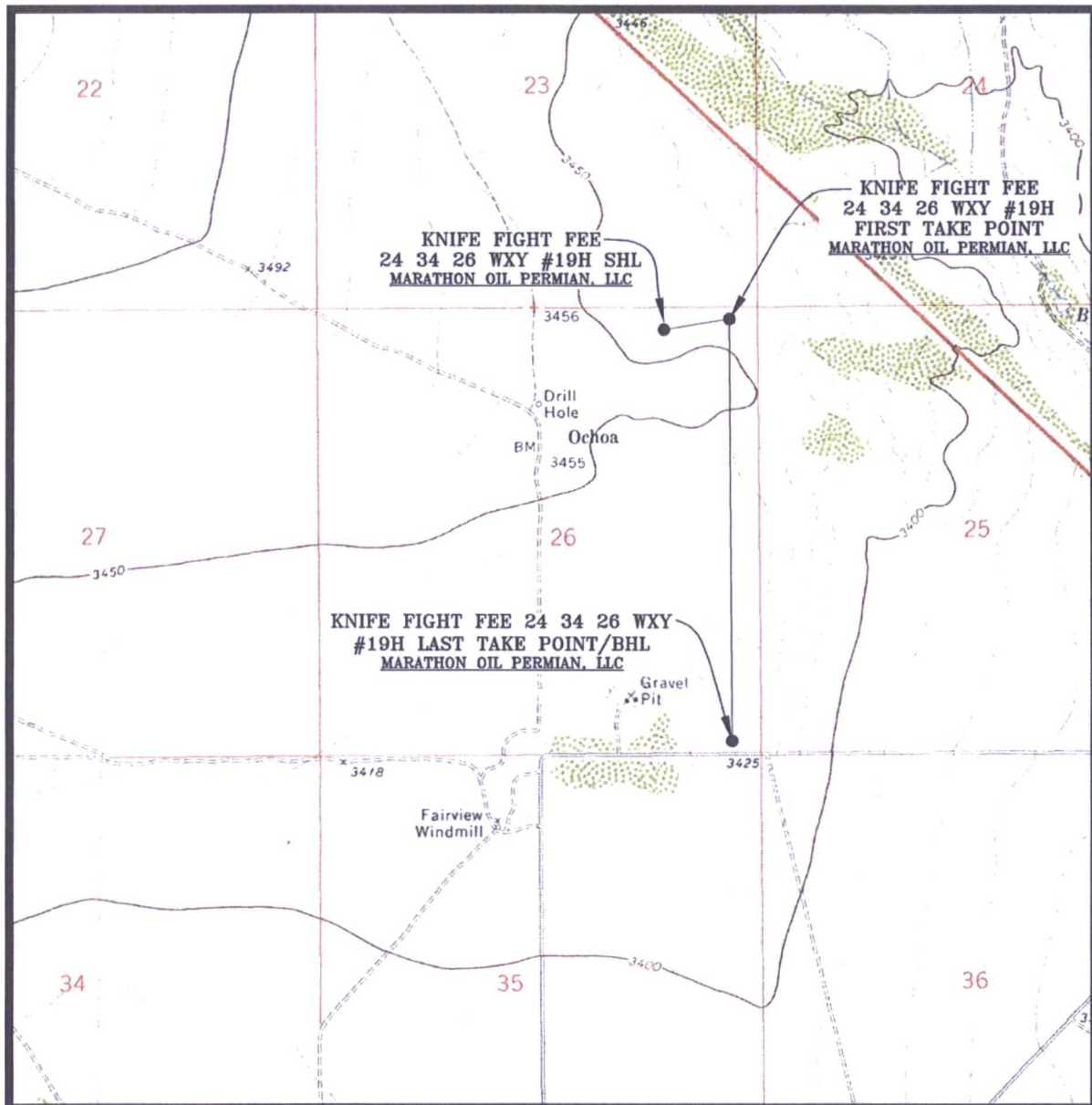


3	01/19/2018	CAP
REV.	DATE	BY

LOCATION VERIFICATION MAP

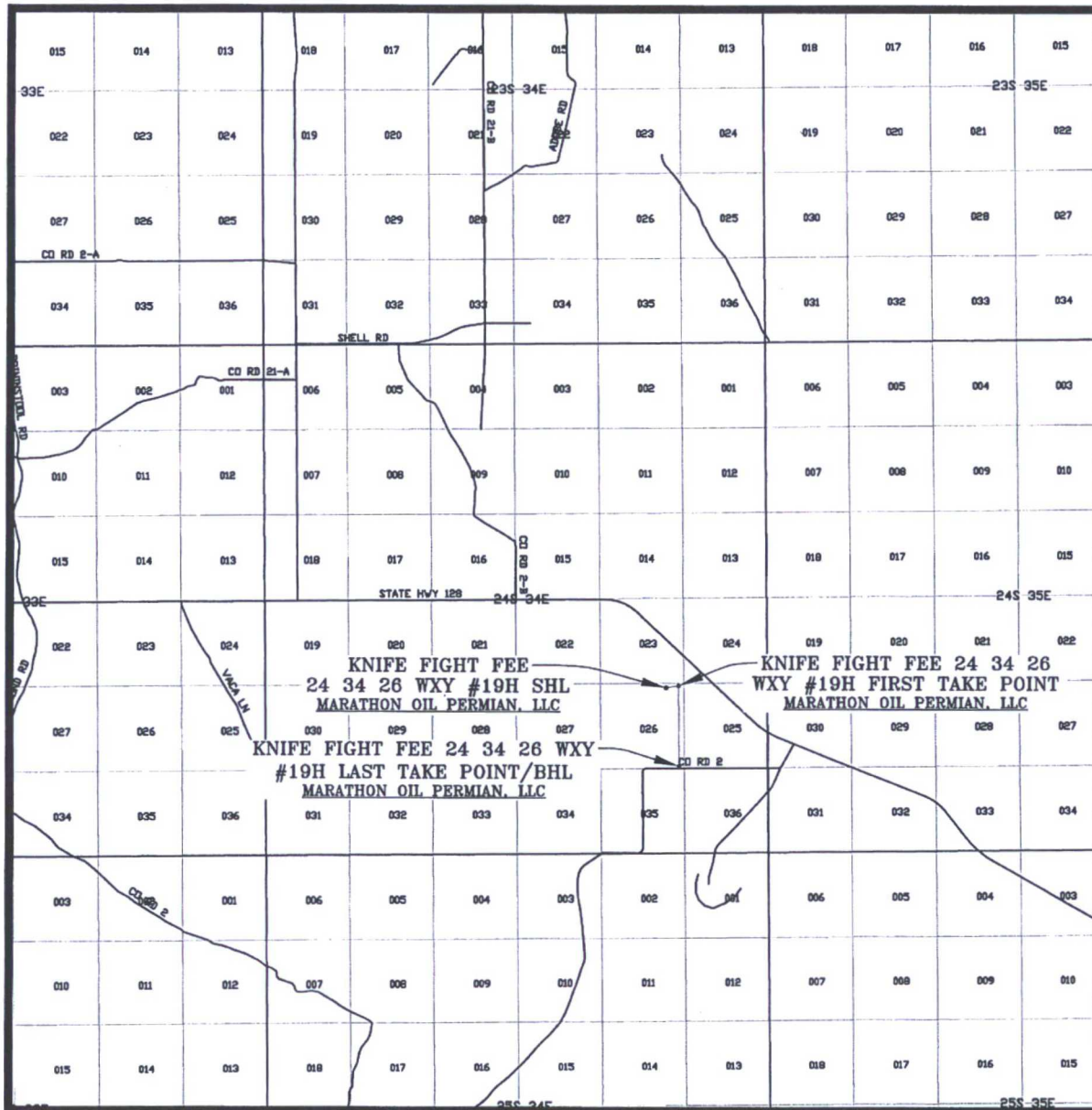


SEC. 26 TWP. 24-S RGE. 34-E
 SURVEY: N.M.P.M.
 COUNTY: LEA
 DESCRIPTION: 271' FNL & 1115' FEL
 ELEVATION: 3446'
 OPERATOR: MARATHON OIL PERMIAN, LLC
 LEASE: KNIFE FIGHT FEE 24 34 26
 U.S.G.S. TOPOGRAPHIC MAP: WOODLEY FLAT, N.M.

SCALE: 1" = 2000'
 CONTOUR INTERVAL = 20'

PREPARED BY:
 R-SQUARED GLOBAL, LLC
 1309 LOUISVILLE AVENUE, MONROE, LA 71201
 318-323-6900 OFFICE
 JOB No. R3800_001

VICINITY MAP



SEC. 26 TWP. 24-S RGE. 34-E
 SURVEY: N.M.P.M.
 COUNTY: LEA
 DESCRIPTION: 271' FNL & 1115' FEL
 ELEVATION: 3446'
 OPERATOR: MARATHON OIL PERMIAN, LLC
 LEASE: KNIFE FIGHT FEE 24 34 26
 U.S.G.S. TOPOGRAPHIC MAP: WOODLEY FLAT, N.M.

SCALE: 1" = 2 MILES

PREPARED BY:
 R-SQUARED GLOBAL, LLC
 1309 LOUISVILLE AVENUE, MONROE, LA 71201
 318-323-6900 OFFICE
 JOB No. R3800_001