

District I  
1625 N. French Dr., Hobbs, NM 88240  
Phone: (575) 393-6161 Fax: (575) 393-0720  
District II  
811 S. First St., Artesia, NM 88210  
Phone: (575) 748-1283 Fax: (575) 748-9720  
District III  
1000 Rio Brazos Road, Aztec, NM 87410  
Phone: (505) 334-6178 Fax: (505) 334-6170  
District IV  
1220 S. St. Francis Dr., Santa Fe, NM 87505  
Phone: (505) 476-3460 Fax: (505) 476-3462

State of New Mexico  
Energy, Minerals & Natural Resources Department  
OIL CONSERVATION DIVISION  
1220 South St. Francis Dr.  
Santa Fe, NM 87505

Form C-102  
Revised August 1, 2011  
Submit one copy to appropriate  
District Office

☐ AMENDED REPORT

WELL LOCATION AND ACREAGE DEDICATION PLAT

<sup>1</sup> API Number 30-025-44662	<sup>2</sup> Pool Code 2200 98098	<sup>3</sup> Pool Name WC-025-E-09-5242532M; WOLF BONE
<sup>4</sup> Property Code 321167	<sup>5</sup> Property Name BLUEBERRY HILL FEE 24-35-19 TB	<sup>6</sup> Well Number 3H
<sup>7</sup> OGRID No. 372098	<sup>8</sup> Operator Name MARATHON OIL PERMIAN LLC	<sup>9</sup> Elevation 3338'

<sup>10</sup> Surface Location

UL or lot no.	Section	Township	Range	Lot Idn	Feet from the	North/South line	Feet from the	East/West line	County
G	19	24S	35E		2416	NORTH	1346	EAST	LEA

<sup>11</sup> Bottom Hole Location If Different From Surface

UL or lot no.	Section	Township	Range	Lot Idn	Feet from the	North/South line	Feet from the	East/West line	County
B	18	24S	35E		150	NORTH	2316	EAST	LEA

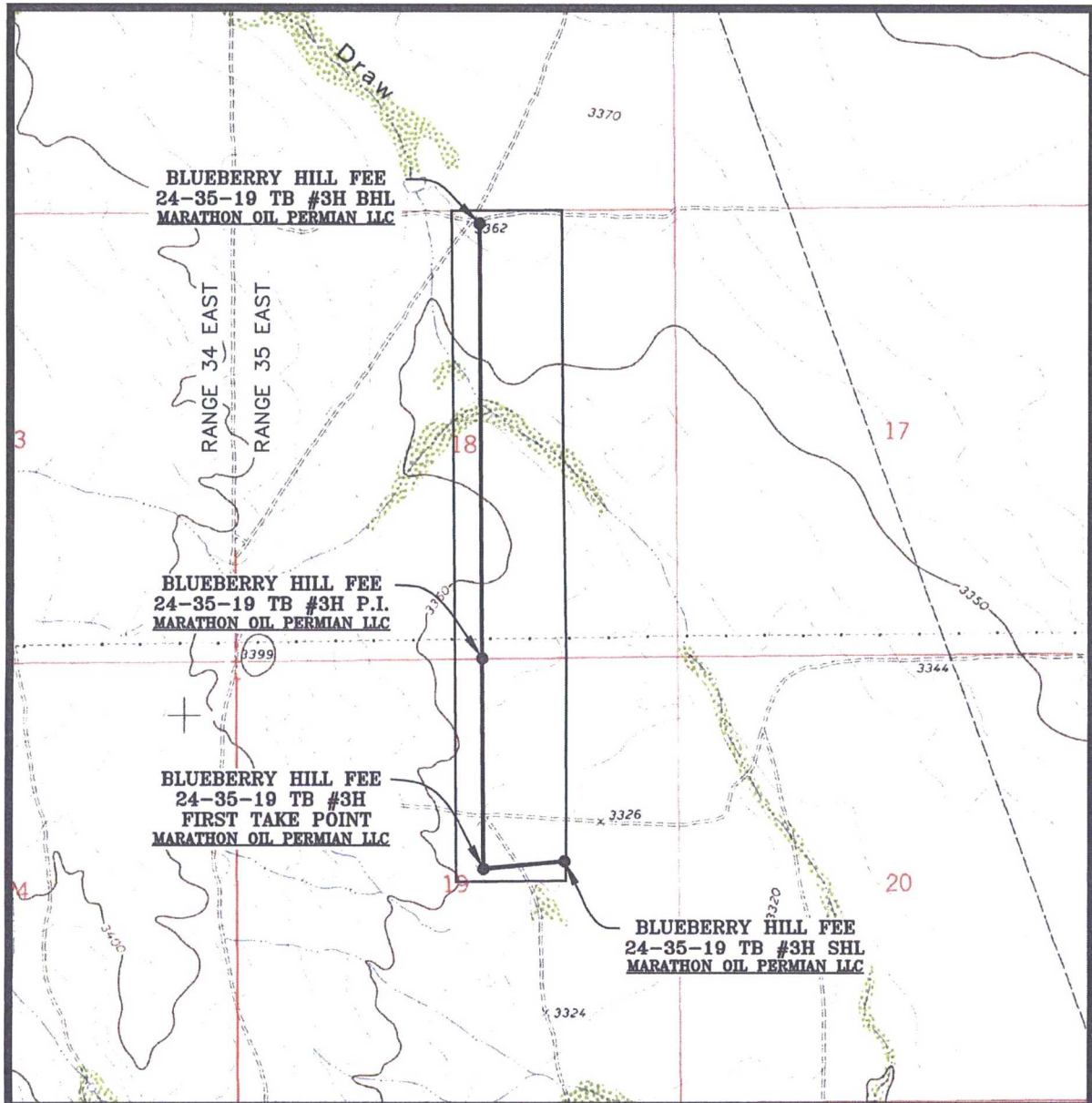
<sup>12</sup> Dedicated Acres 240.00	<sup>13</sup> Joint or Infill	<sup>14</sup> Consolidation Code	<sup>15</sup> Order No.
---	-------------------------------	----------------------------------	-------------------------

No allowable will be assigned to this completion until all interests have been consolidated or a non-standard unit has been approved by the division.

<p><sup>16</sup></p>		<p><b><sup>17</sup> OPERATOR CERTIFICATION</b></p> <p>I hereby certify that the information contained herein is true and complete to the best of my knowledge and belief, and that this organization either owns a working interest or unleased mineral interest in the land including the proposed bottom hole location or has a right to drill this well at this location pursuant to a contract with an owner of such a mineral or working interest, or to a voluntary pooling agreement or a compulsory pooling order heretofore entered by the division.</p> <p>Signature: <i>[Signature]</i> Date: 03/26/2018</p> <p>Printed Name: Melissa Szudera</p> <p>E-mail Address: mszudera@marathonoil.com</p>
<p><b><sup>18</sup> SURVEYOR CERTIFICATION</b></p> <p>I hereby certify that the well location shown on this plat was plotted from field notes of actual surveys made by me or under my supervision, and that the same is true and correct to the best of my belief.</p> <p>Date of Survey: MARCH 08, 2018</p> <p>Signature and Seal of Professional Surveyor: <i>[Signature]</i></p> <p>LLOYD P. SHORT 27653</p> <p>Certificate Number: 27653</p>		<p><b><sup>19</sup> CORNER COORDINATES</b></p> <p>NAD 83, SPCS NM EAST</p> <p>A - X: 827909.13' / Y: 446745.98'</p> <p>B - X: 829232.15' / Y: 446756.93'</p> <p>C - X: 829307.79' / Y: 438836.32'</p> <p>D - X: 827980.29' / Y: 438824.22'</p>

2	03/02/2018	CAP
REV.	DATE	BY

# LOCATION VERIFICATION MAP



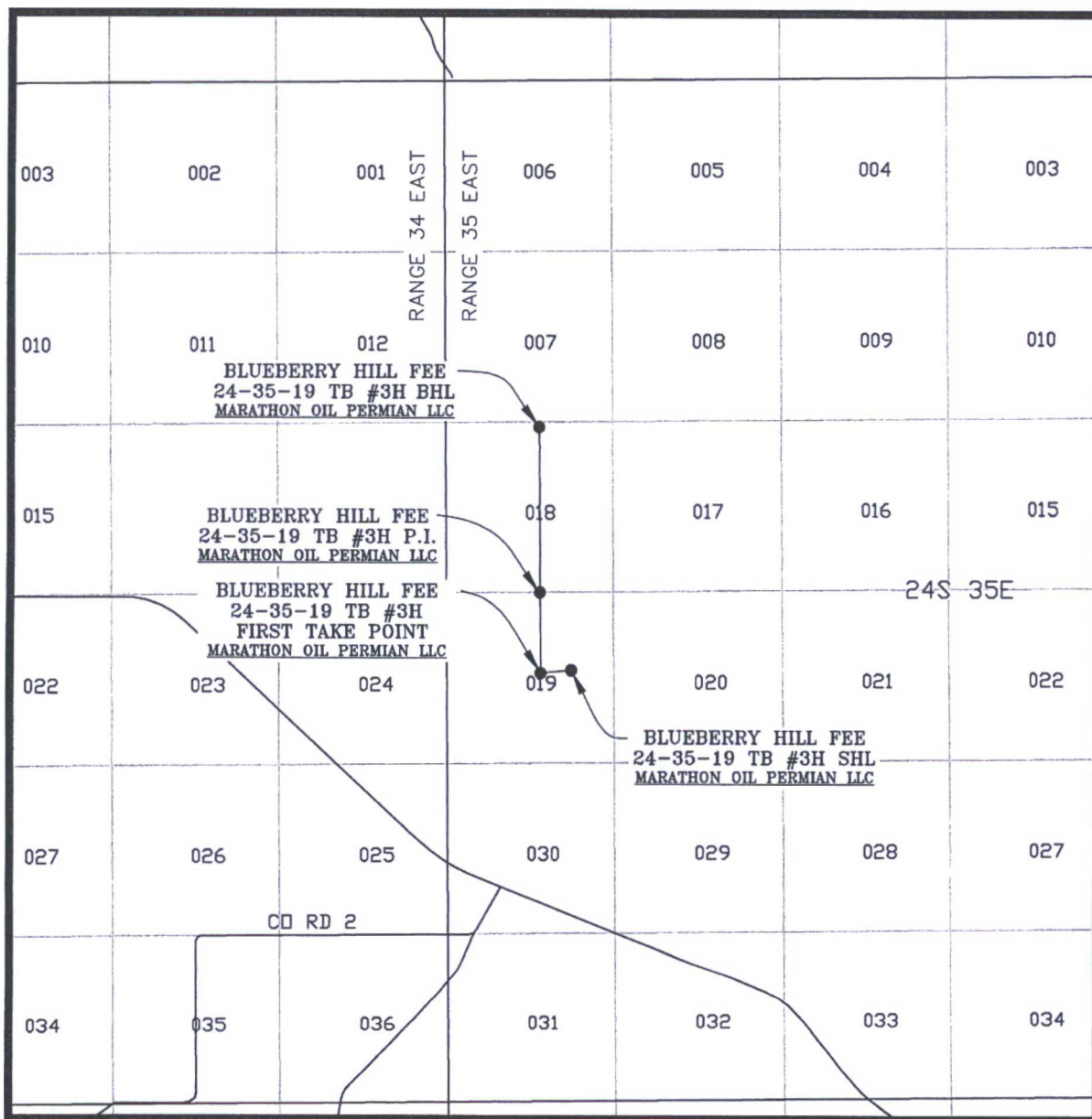
SEC. 19 TWP. 24-S RGE. 35-E  
 SURVEY: N.M.P.M.  
 COUNTY: LEA  
 DESCRIPTION: 2416' FNL & 1346' FEL  
 ELEVATION: 3338'  
 OPERATOR: MARATHON OIL PERMIAN LLC  
 LEASE: BLUEBERRY HILL FEE 24-35-19  
 U.S.G.S. TOPOGRAPHIC MAP: WOODLEY FLATS, N.M.

SCALE: 1" = 2000'  
 CONTOUR INTERVAL = 10'

PREPARED BY:  
 R-SQUARED GLOBAL, LLC  
 1309 LOUISVILLE AVENUE, MONROE, LA 71201  
 318-323-6900 OFFICE  
 JOB No. R3637\_002



# VICINITY MAP



SEC. 19 TWP. 24-S RGE. 35-E

SURVEY: N.M.P.M.

COUNTY: LEA

DESCRIPTION: 2416' FNL & 1346' FEL

ELEVATION: 3338'

OPERATOR: MARATHON OIL PERMIAN LLC

LEASE: BLUEBERRY HILL FEE 24-35-19

U.S.G.S. TOPOGRAPHIC MAP: WOODLEY FLATS, N.M.

SCALE: 1" = 1 MILE

PREPARED BY:  
R-SQUARED GLOBAL, LLC  
1309 LOUISVILLE AVENUE, MONROE, LA 71201  
318-323-6900 OFFICE  
JOB No. R3837\_002