

DISTRICT I  
1625 N. French Dr., Hobbs, NM 88240  
Phone: (575) 393-6161 Fax: (575) 393-0720  
DISTRICT II  
811 S. First St., Artesia, NM 88210  
Phone: (575) 748-1283 Fax: (575) 748-9720  
DISTRICT III  
1000 Rio Brazos Road, Aztec, NM 87410  
Phone: (505) 334-6178 Fax: (505) 334-6170  
DISTRICT IV  
1220 S. St. Francis Dr., Santa Fe, NM 87505  
Phone: (505) 476-3460 Fax: (505) 476-3462

State of New Mexico  
Energy, Minerals & Natural Resources Department  
OIL CONSERVATION DIVISION  
1220 South St. Francis Dr.  
Santa Fe, New Mexico 87505

Form C-102  
Revised August 1, 2011  
Submit one copy to appropriate  
District Office

APR 25 2018

RECEIVED

X AMENDED REPORT

WELL LOCATION AND ACREAGE DEDICATION PLAT

API Number 30-025-44021	Pool Code 98259 98264	Pool Name Bell Lake Ojo Chiso; Bone Spring, Southwest
Property Code 316706	Property Name BELL LAKE UNIT SOUTH	Well Number 319H
OGRID No. 12361	Operator Name KAISER-FRANCIS OIL COMPANY	Elevation 3632'

Surface Location

UL or lot No.	Section	Township	Range	Lot Idn	Feet from the	North/South line	Feet from the	East/West line	County
L	1	24-S	33-E		2213.9	SOUTH	531.1	WEST	LEA

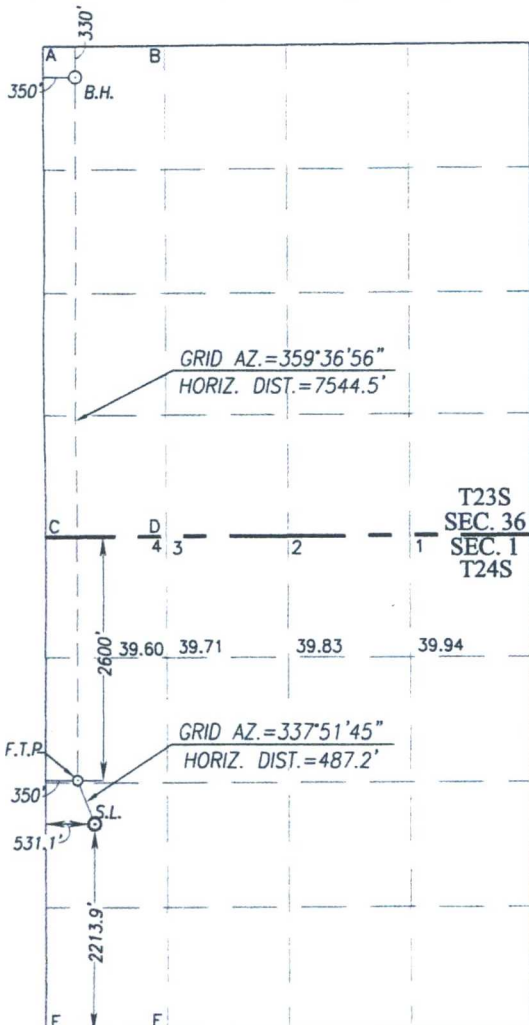
Bottom Hole Location If Different From Surface

UL or lot No.	Section	Township	Range	Lot Idn	Feet from the	North/South line	Feet from the	East/West line	County
D	36	23-S	33-E		330	NORTH	350	WEST	LEA

Dedicated Acres 239.6	Joint or Infill	Consolidation Code	Order No.
--------------------------	-----------------	--------------------	-----------

NO ALLOWABLE WILL BE ASSIGNED TO THIS COMPLETION UNTIL ALL INTERESTS HAVE BEEN CONSOLIDATED OR A NON-STANDARD UNIT HAS BEEN APPROVED BY THE DIVISION

SCALE: 1"=2000'



BOTTOM HOLE LOCATION  
NAD 83 NME  
Y= 461952.0 N  
X= 788568.4 E  
LAT.=32.267448° N  
LONG.=103.533464° W

BOTTOM HOLE LOCATION  
NAD 27 NME  
Y= 461892.8 N  
X= 747384.7 E  
LAT.=32.267324° N  
LONG.=103.532985° W

CORNER COORDINATES TABLE  
NAD 27 NME

A - Y= 462219.8 N, X= 747032.5 E  
B - Y= 462230.8 N, X= 748351.1 E  
C - Y= 456947.4 N, X= 747071.8 E  
D - Y= 456955.5 N, X= 748391.2 E  
E - Y= 451683.5 N, X= 747099.7 E  
F - Y= 451688.5 N, X= 748422.0 E

CORNER COORDINATES TABLE  
NAD 83 NME

A - Y= 462279.1 N, X= 788216.1 E  
B - Y= 462290.0 N, X= 789534.8 E  
C - Y= 457006.5 N, X= 788255.6 E  
D - Y= 457014.5 N, X= 789575.0 E  
E - Y= 451742.4 N, X= 788283.7 E  
F - Y= 451747.4 N, X= 789606.0 E

FIRST TAKE POINT

NAD 83 NME  
Y= 454409.1 N  
X= 788619.0 E  
LAT.=32.246714° N  
LONG.=103.533482° W

FIRST TAKE POINT

NAD 27 NME  
Y= 454350.2 N  
X= 747435.1 E  
LAT.=32.246591° N  
LONG.=103.533004° W

GEODETIC COORDINATES

NAD 83 NME  
SURFACE LOCATION  
Y= 453957.9 N  
X= 788802.6 E  
LAT.=32.245470° N  
LONG.=103.532900° W

GEODETIC COORDINATES

NAD 27 NME  
SURFACE LOCATION  
Y= 453898.9 N  
X= 747618.7 E  
LAT.=32.245347° N  
LONG.=103.532421° W

OPERATOR CERTIFICATION

I hereby certify that the information herein is true and complete to the best of my knowledge and belief, and that this organization either owns a working interest or unleased mineral interest in the land including the proposed bottom hole location or has a right to drill this well at this location pursuant to a contract with an owner of such mineral or working interest, or to a voluntary pooling agreement, or a compulsory pooling order heretofore entered by the division.

Signature

Date

Charlotte Van Valkenburg  
Printed Name

Charlotv@kfoc.net  
E-mail Address

SURVEYOR CERTIFICATION

I hereby certify that the well location shown on this plat was plotted from field notes of actual surveys made by me or under my supervision, and that the same is true and correct to the best of my belief.

NOVEMBER 2, 2017

Date of Survey

Signature & Seal of Professional Surveyor.



Certificate Number  
Gary G. Eidson 12641  
Ronald J. Eidson 3239

DSS REL. W.O.: 17131035 JWSC W.O.: 17.11.1060