

DISTRICT IV
1820 B. ST. FRANCIS DR., SANTA FE, NM 87505
Phone: (505) 478-3460 Fax: (505) 478-3462

State of New Mexico
Energy, Minerals & Natural Resources Department
OIL CONSERVATION DIVISION
1220 SOUTH ST. FRANCIS DR.
Santa Fe, New Mexico 87505

Form C-102
Revised August 1, 2011
Submit one copy to appropriate
District Office

☐ AMENDED REPORT

WELL LOCATION AND ACREAGE DEDICATION PLAT

API Number 30-025- <i>44738</i>	Pool Code <i>51020</i>	Well Location and Acreage Dedication <i>RED HILLS, LOUISIANA</i>	Well Name <i>Wildcat</i>	Well Number Bone Spring
Property Code <i>38728</i>	Property Name DOMINATOR 25 FEDERAL	Well Number 307H		
OGRID No. 229137	Operator Name COG OPERATING, LLC	Elevation 3339.3'		

Surface Location

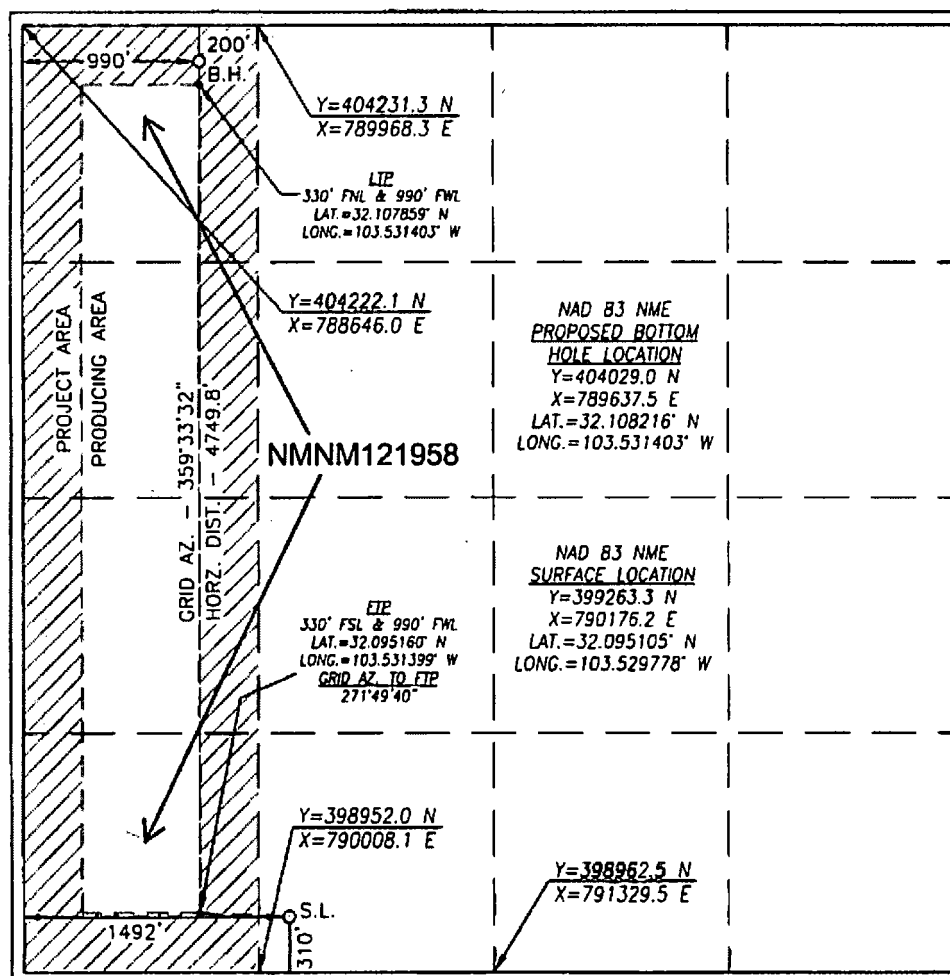
UL or lot No.	Section	Township	Range	Lot Idn	Feet from the	North/South line	Feet from the	East/West line	County
N	25	25-S	33-E		310	SOUTH	1492	WEST	LEA

Bottom Hole Location If Different From Surface

UL or lot No.	Section	Township	Range	Lot Idn	Feet from the	North/South line	Feet from the	East/West line	County
D	25	25-S	33-E		200	NORTH	990	WEST	LEA

Dedicated Acres	Joint or Infill	Consolidation Code	Order No.
160			

NO ALLOWABLE WILL BE ASSIGNED TO THIS COMPLETION UNTIL ALL INTERESTS HAVE BEEN CONSOLIDATED
OR A NON-STANDARD UNIT HAS BEEN APPROVED BY THE DIVISION



OPERATOR CERTIFICATION

I hereby certify that the information herein is true and complete to the best of my knowledge and belief, and that this organization either owns a working interest or unleased mineral interest in the land including the proposed bottom hole location or has a right to drill this well at this location pursuant to a contract with an owner of such mineral or working interest, or to a voluntary pooling agreement or a compulsory pooling order heretofore entered by the division.

by the Division.

Mateo R. Lopez 11/4/11

Signature Date

Mayte Reyes

Printed Name _____

mreyes1@concho.com

E-mail Address _____

SURVEYOR CERTIFICATION

I hereby certify that the well location shown on this plat was plotted from field notes of actual surveys made by me or under my supervision, and that the same is true and correct to the best of my belief.

OCTOBER 11, 2017

Date of Survey

Signature & Seal of Professional Surveyor



Chad Harcrow 10/20/11
 Certificate No. CHAD HARCROW 17777
 W.O. # 17-1252 DRAWN BY: SP