

State of New Mexico
Energy, Minerals and Natural ResourcesForm C-103
Revised July 18, 2013OIL CONSERVATION DIVISION
1220 South St. Francis Dr.
Santa Fe, NM 87505WELL API NO.
30-005-209815. Indicate Type of Lease
STATE ☒ FEE ☐6. State Oil & Gas Lease No.
LG-48037. Lease Name or Unit Agreement Name
Patsy BPK State Com8. Well Number
89. OGRID Number
02557510. Pool name or Wildcat
Caprock; Atoka, West

SUNDRY NOTICES AND REPORTS ON WELLS

(DO NOT USE THIS FORM FOR PROPOSALS TO DRILL OR TO DEEPEN OR PLUG BACK TO A DIFFERENT RESERVOIR. USE "APPLICATION FOR PERMIT" (FORM C-101) FOR SUCH PROPOSALS.)

1. Type of Well: Oil Well ☐ Gas Well ☒ Other2. Name of Operator
EOG Y Resources, Inc.3. Address of Operator
104 South Fourth Street, Artesia, NM 88210

4. Well Location

Unit Letter H : 1980 feet from the North line and 660 feet from the East line
Section 14 Township 12S Range 31E NMPM Chaves County11. Elevation (Show whether DR, RKB, RT, GR, etc.)
4434' GR

12. Check Appropriate Box to Indicate Nature of Notice, Report or Other Data

NOTICE OF INTENTION TO:

PERFORM REMEDIAL WORK ☐ PLUG AND ABANDON ☒
TEMPORARILY ABANDON ☐ CHANGE PLANS ☐
PULL OR ALTER CASING ☐ MULTIPLE COMPL ☐
DOWNHOLE COMMINGLE ☐
CLOSED-LOOP SYSTEM ☐
OTHER: ☐

SUBSEQUENT REPORT OF

REMEDIAL WORK
COMMENCE DRILLING OPNS. ☐ INT TO P&A PM
CASING/CEMENT JOB ☐ P&A NR
P&A R
OTHER: ☐

13. Describe proposed or completed operations. (Clearly state all pertinent details, and give pertinent dates, including estimated date of starting any proposed work). SEE RULE 19.15.7.14 NMAC. For Multiple Completions: Attach wellbore diagram of proposed completion or recompletion.

RECEIVED

EOG Y Resources, Inc. plans to plug and abandon this well as follows:

1. MIRU all safety equipment as needed. TOH with production equipment.
2. RIH with GR/JB to 10,710'.
3. Set a CIBP at 10,690' with 35' cement on top. Pressure test cag
4. Load the hole with plugging mud. Set a CIBP at 10,270' with 35' cement on top.
5. Set a CIBP at 9220' with 35' cement on top.
6. Set a CIBP at 8490' with 25 sx Class "H" cement from 8490'-8300'. WOC and tag. This will place a plug over Wolfcamp perforations, Wolfcamp top and DV tool.
7. Spot a 25 sx Class "H" cement plug from 7280'-7054'. This will place a plug across Abo top.
8. Perforate at 5055'. Spot a 50 sx Class "C" cement plug inside/outside from 5055'-4905'. WOC and tag. This will place a plug across Glorieta top.
9. Perforate at 3650'. Spot a 35 sx Class "C" cement plug inside/outside from 3650'-3510'. WOC and tag. This will place a plug across intermediate casing shoe and San Andres top.
10. Perforate at 1500'. Attempt to establish circulation. Spot a 25 sx Class "C" cement plug from 1500'-1275'. WOC and tag. This will place a plug across Rustler top.
11. Perforate at 405'. Attempt to establish circulation. Spot a 40 sx Class "C" cement plug from 405' up to surface. This will place a plug across surface casing shoe to surface.
12. Cut off wellhead and weld on dry hole marker. Clean location as per regulation.

Wellbore schematics attached

Spud Date:

R

NOTIFY OCD 24 HOURS PRIOR TO
BEGINNING PLUGGING OPERATIONS

MAY 16 2018

DISTRICT II-ARTESIA O.C.D.

I hereby certify that the information above is true and complete to the best of my knowledge and belief.

SIGNATURE Tina Huerta TITLE Regulatory Specialist DATE May 14, 2018Type or print name Tina Huerta E-mail address: tina_huerta@eogresources.com PHONE: 575-748-4168

For State Use Only

APPROVED BY: Mal Whitaker TITLE Petroleum Engr. Specialist DATE 05/21/2018

Conditions of Approval (if any):

C103 INTENT TO P&A EXPIRES
1 YEAR FROM DATE OF APPROVAL

WELL NAME: Patsy BPK State Com #8 FIELD: _____
 LOCATION: 1980' FNL & 660' FEL Sec.14-12S-31E
 GL: 4,434' ZERO: _____ KB: _____
 COMMENTS: API No.: 30-005-20981

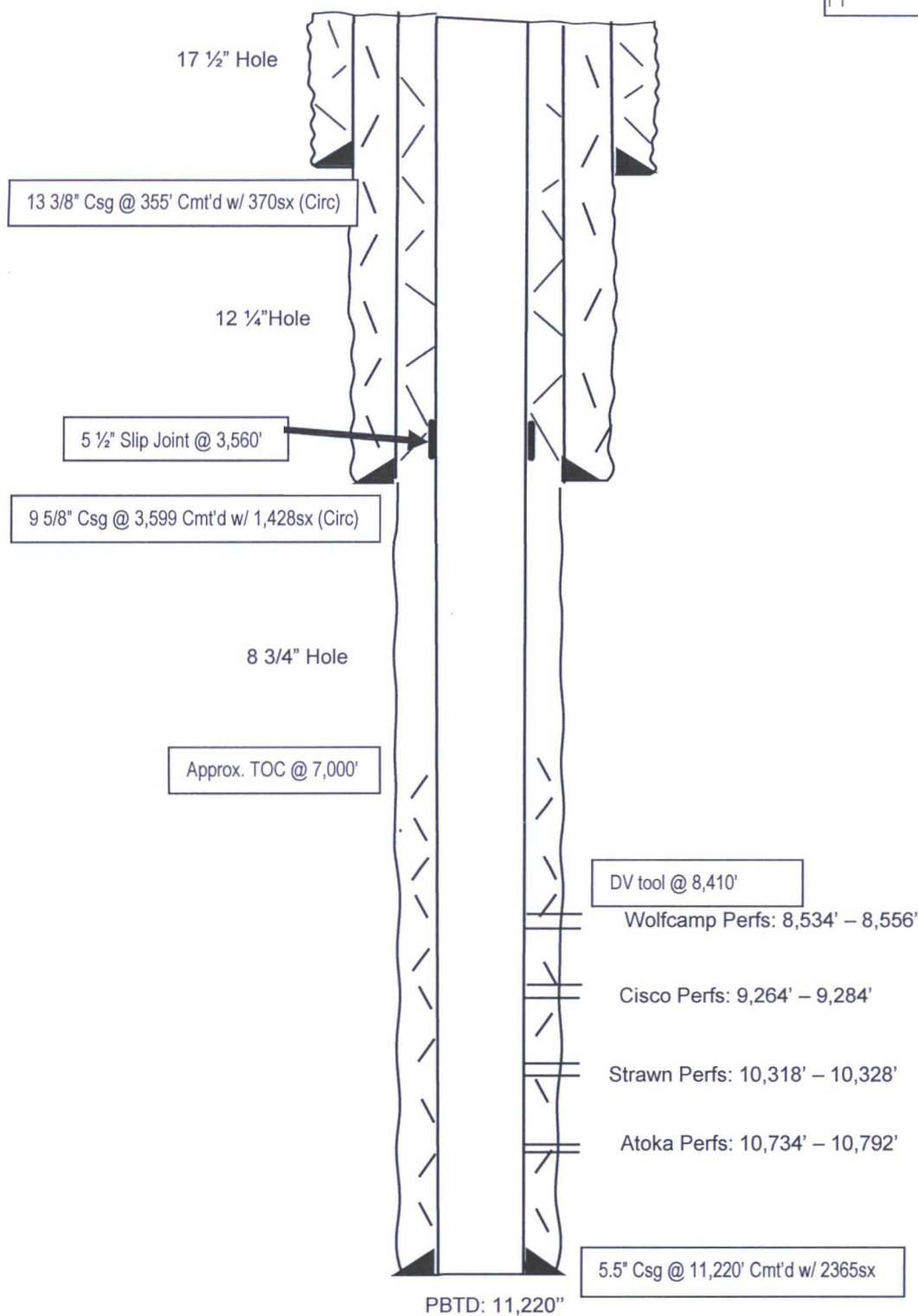
CASING PROGRAM

13 3/8" 48# H-40	355'
9 5/8" 36# & 40# K-55	3,599'
5.5" 17# N-80 & K-55	11,220'

Before

TOPS

Rustler	1,450'
Yates	2,268'
Queen	3,010'
San Andres	3,602'
Glorieta	5,005'
Tubb	6,492'
Abo	7,230'
Wolfcamp	8,416'
Strawn	10,042'
Atoka	10,510'
Morrow	10,816'



Not to Scale
 5/14/18
 JE

MAY 16 2018

WELL NAME: Patsy BPK State Com #8 FIELD: _____

LOCATION: 1980' FNL & 660' FEL Sec.14-12S-31E

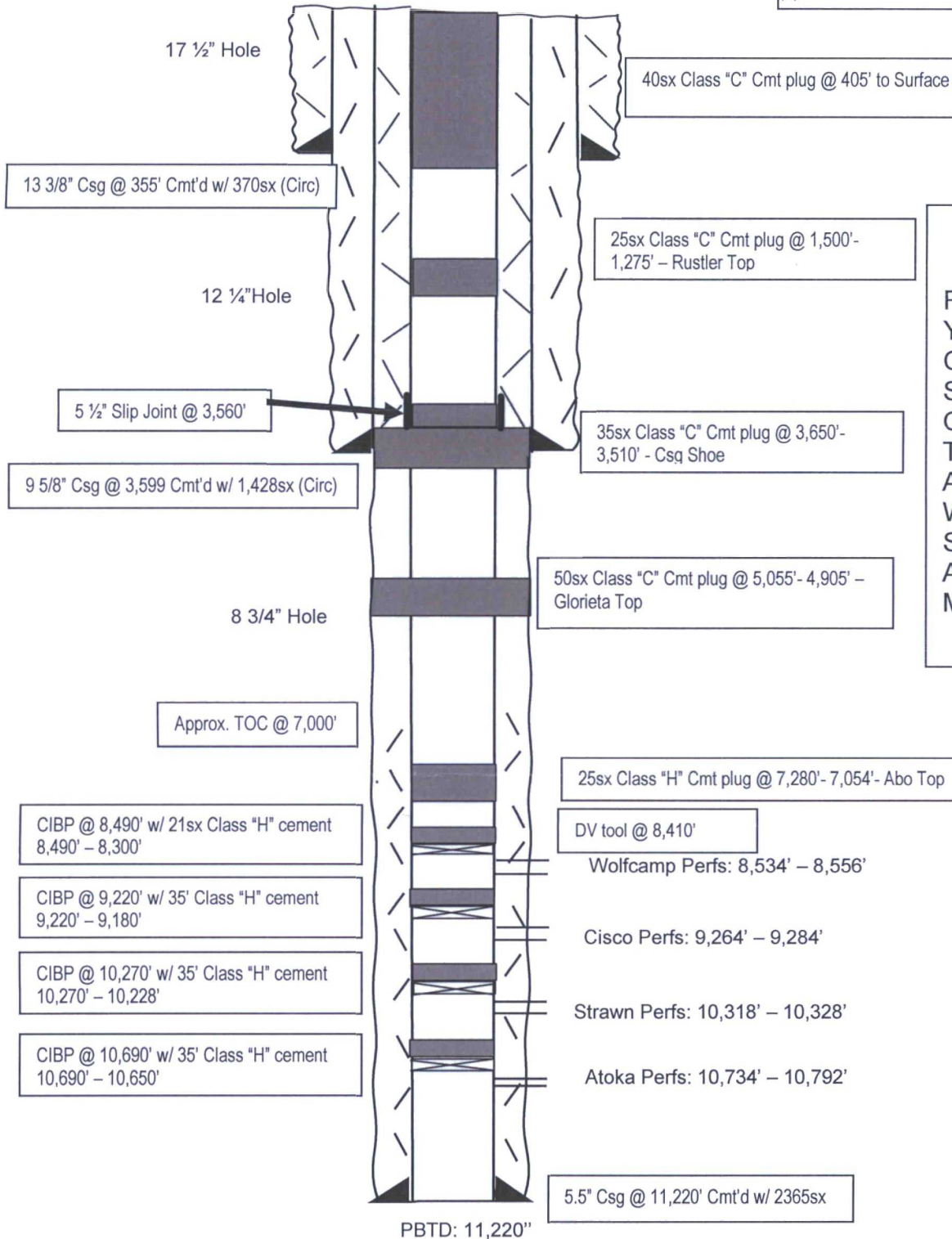
DISTRICT II-ARTESIA O.C.D.

CASING PROGRAM

GL: 4,434' ZERO: _____ KB: _____

COMMENTS: API No.: 30-005-20981

13 3/8" 48# H-40	355'
9 5/8" 36# & 40# K-55	3,599'
5.5" 17# N-80 & K-55	11,220'

**After****TOPS**

Rustler	1,450'
Yates	2,268'
Queen	3,010'
San Andres	3,602'
Glorieta	5,005'
Tubb	6,492'
Abo	7,230'
Wolfcamp	8,416'
Strawn	10,042'
Atoka	10,510'
Morrow	10,816'

Not to Scale5/14/18
JE