

UNITED STATES  
DEPARTMENT OF THE INTERIOR  
BUREAU OF LAND MANAGEMENT

OCD Hobbs

FORM APPROVED  
OMB NO. 1004-0137  
Expires: January 31, 2018**SUNDRY NOTICES AND REPORTS ON WELLS**  
*Do not use this form for proposals to drill or to re-enter an abandoned well. Use form 3160-3 (APD) for such proposals.*5. Lease Serial No.  
NMNM93223

6. If Indian, Allottee or Tribe Name

7. If Unit or CA/Agreement, Name and/or No.

8. Well Name and No.  
MADERA 19 FEDERAL 19. API Well No.  
30-025-3664510. Field and Pool or Exploratory Area  
JABALINA, STRAWN SW11. County or Parish, State  
LEA COUNTY, NM

SUBMIT IN TRIPLICATE - Other instructions on page 2

RECEIVED

## 1. Type of Well

☐ Oil Well ☒ Gas Well ☐ Other

## 2. Name of Operator

MARATHON OIL PERMIAN LLC

Contact: JENNIFER VAN CUREN

E-Mail: jvancuren@marathonoil.com

## 3a. Address

5555 SAN FELIPE ST  
HOUSTON, TX 77056

## 3b. Phone No. (include area code)

Ph: 713-262-2500

## 4. Location of Well (Footage, Sec., T., R., M., or Survey Description)

Sec 19 T26S R35E Mer NMP NWSW 1980FSL 1000FWL

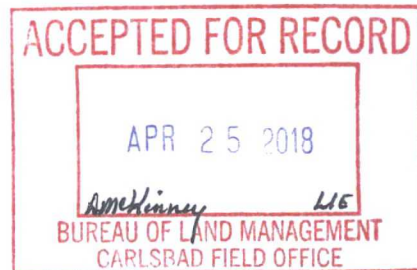
## 12. CHECK THE APPROPRIATE BOX(ES) TO INDICATE NATURE OF NOTICE, REPORT, OR OTHER DATA

TYPE OF SUBMISSION	TYPE OF ACTION			
<input checked="" type="checkbox"/> Notice of Intent	<input type="checkbox"/> Acidize	<input type="checkbox"/> Deepen	<input type="checkbox"/> Production (Start/Resume)	<input type="checkbox"/> Water Shut-Off
<input type="checkbox"/> Subsequent Report	<input type="checkbox"/> Alter Casing	<input type="checkbox"/> Hydraulic Fracturing	<input type="checkbox"/> Reclamation	<input type="checkbox"/> Well Integrity
<input type="checkbox"/> Final Abandonment Notice	<input type="checkbox"/> Casing Repair	<input type="checkbox"/> New Construction	<input type="checkbox"/> Recomplete	<input checked="" type="checkbox"/> Other
	<input type="checkbox"/> Change Plans	<input type="checkbox"/> Plug and Abandon	<input type="checkbox"/> Temporarily Abandon	Site Facility Diagram/Security Plan
	<input type="checkbox"/> Convert to Injection	<input type="checkbox"/> Plug Back	<input type="checkbox"/> Water Disposal	

13. Describe Proposed or Completed Operation: Clearly state all pertinent details, including estimated starting date of any proposed work and approximate duration thereof. If the proposal is to deepen directionally or recompleat horizontally, give subsurface locations and measured and true vertical depths of all pertinent markers and zones. Attach the Bond under which the work will be performed or provide the Bond No. on file with BLM/BIA. Required subsequent reports must be filed within 30 days following completion of the involved operations. If the operation results in a multiple completion or recompleat in a new interval, a Form 3160-4 must be filed once testing has been completed. Final Abandonment Notices must be filed only after all requirements, including reclamation, have been completed and the operator has determined that the site is ready for final inspection.

Marathon Oil Permian is submitting the site facility diagrams for lease CA NMNM93223.

Please see attached sheet for all required information.



## 14. I hereby certify that the foregoing is true and correct.

Electronic Submission #412211 verified by the BLM Well Information System  
For MARATHON OIL PERMIAN LLC, sent to the Hobbs  
Committed to AFMSS for processing by DEBORAH MCKINNEY on 04/24/2018 ()

Name (Printed/Typed) JENNIFER VAN CUREN

Title SR. REGULATORY COMPLIANCE REP

Signature (Electronic Submission)

Date 04/24/2018

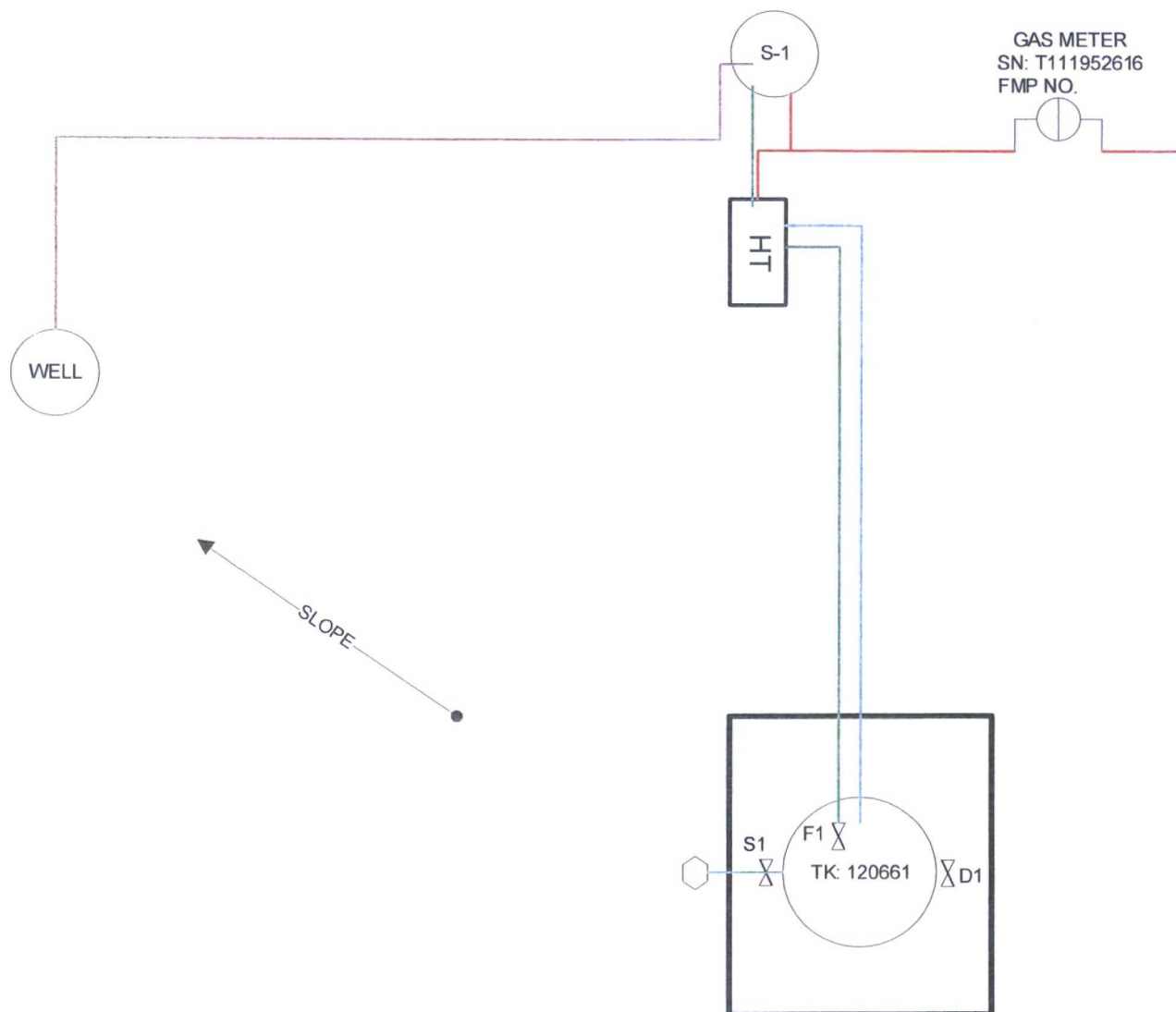
## THIS SPACE FOR FEDERAL OR STATE OFFICE USE

Approved By _____	Title _____	Date _____
Conditions of approval, if any, are attached. Approval of this notice does not warrant or certify that the applicant holds legal or equitable title to those rights in the subject lease which would entitle the applicant to conduct operations thereon.		Office _____

Title 18 U.S.C. Section 1001 and Title 43 U.S.C. Section 1212, make it a crime for any person knowingly and willfully to make to any department or agency of the United States any false, fictitious or fraudulent statements or representations as to any matter within its jurisdiction.

(Instructions on page 2)

\*\* OPERATOR-SUBMITTED \*\* OPERATOR-SUBMITTED \*\* OPERATOR-SUBMITTED \*\*



## KEY/NOTES

WELL PAD NOT BERMED  
FIREWALL H = 2FT

HT - HEATER TREATER  
S-1 - SEPARATOR

F1 - FILL VALVES  
D1 - DRAIN VALVE  
S1 - SALELS VALVES



FIGURE TITLE  
**MADERA 19 FEDERAL 1**

API  
**30-025-36645**

LEASE  
**NMNM93223**

CA #

OPERATOR  
**MARATHON OIL PERMIAN, LLC; 5555 SAN FELIPE ST., HOUSTON, TEXAS., 77056**

LOCATION  
**LEA COUNTY, NM**

**L-19-T26S-R35**

**1980 FSL & 1000 FWL**

**LAT 32.0269737**

**LONG -103.4119415**

DATE  
**MARCH 2018**

SCALE  
**NOT TO SCALE**

DRAWN BY  
**AC**

APPROVED BY  
**JVC**

## Valve Positioning in the Production Phase

Producing to 120661  
Valve S1 & D1 are sealed closed  
Valve F1 is open

## Valve Positioning in the Sales Phase

Sales from 120661  
Valve F1 & D1 are closed  
Valve S1 is open

## Valve Positioning in the Drain Phase

Drain from 120661  
Valve S1 & F1 is sealed closed  
D1 is open



FIGURE TITLE  
**MADERA 19 FEDERAL 1**

API	LEASE	CA #
<b>30-025-36645</b>	<b>NMNM93223</b>	

OPERATOR  
**MARATHON OIL PERMIAN, LLC**

LOCATION	L-19-T26S-R35	LAT	32.0269737
LEA COUNTY, NM	1980 FSL & 1000 FWL	LONG	-103.4119415

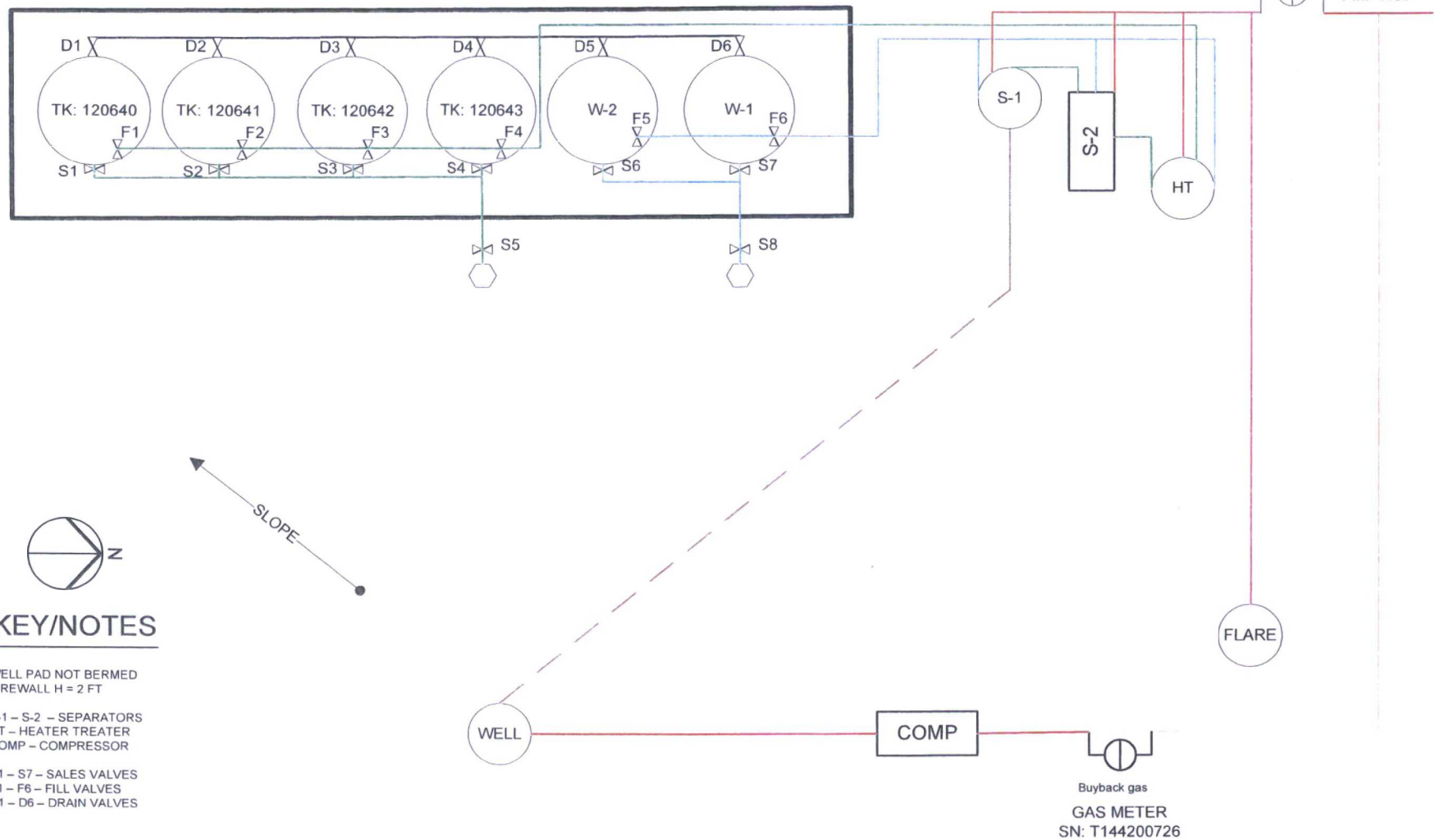
DATE	MARCH 2018
------	------------

SCALE	NOT TO SCALE
-------	--------------

DRAWN BY	AC
----------	----

APPROVED BY	JVC
-------------	-----





## KEY/NOTES

WELL PAD NOT BERMED  
FIREWALL H = 2 FT

S-1 – S-2 – SEPARATORS  
HT – HEATER TREATER  
COMP – COMPRESSOR

S1 – S7 – SALES VALVES  
F1 – F6 – FILL VALVES  
D1 – D6 – DRAIN VALVES

### FIGURE TITLE

**MADERA 19 FEDERAL COM 4H**

### API

**30-025-41492**

### LEASE

**NMNM93223**

### CA #

### OPERATOR

**MARATHON OIL PERMIAN, LLC**  
**5555 SAN FELIPE ST, HOUSTON, TEXAS 77056**

### LOCATION

**LEA COUNTY, NM**

**SESW-19-T26S-R35E**  
**330 FSL & 1980 FWL**

**LAT 32.0224342**  
**LONG -103.408783**

### DATE

**MARCH 2018**

### SCALE

**NOT TO SCALE**

### DRAWN BY

**AC**

### APPROVED BY

**JVC**



### Valve Positioning in the Production Phase

Producing to 120640	Producing to 120641	Producing to 120642	Producing to 120643
Valve F1 is open	Valve F2 is open	Valve F3 is open	Valve F4 is open
Valve S1, D1 are sealed closed	Valve S2, D1 are sealed closed	Valve S3, D1 are sealed closed	Valve S4, D1 are sealed closed
Valve F2, F3, F4 are closed	Valve F1, F3, F4 are closed	Valve F1, F2, F4 are closed	Valve F1, F2, F3 are closed

### Valve Positioning in the Sales Phase

Sales from 120640	Sales from 120641	Sales from 120642	Sales from 120643
Valve F1, D1 are sealed closed	Valve F2, D2 are sealed closed	Valve F3, D3 are sealed closed	Valve F4, D4 are sealed closed
Valve S1, S5 are open	Valve S2, S5 are open	Valve S3, S5 are open	Valve S4, S5 are open
Valve F2, F3, F4 are open/closed	Valve F1, F3, F4 are open/closed	Valve F1, F2, F4 are open/closed	Valve F1, F2, F3 are open/closed
Valve S2, S3, S4 are sealed closed	Valve S1, S3, S4 are sealed closed	Valve S1, S2, S4 are sealed closed	Valve S1, S2, S3 are sealed closed
Valve D2, D3, D4 are sealed closed	Valve D1, D3, D4 are sealed closed	Valve D1, D2, D4 are sealed closed	Valve D1, D2, D3 are sealed closed

### Valve Positioning in the Drain Phase

Drain from 120640	Drain from 120641	Drain from 120642	Drain from 120643
Valve F1 are closed	Valve F2 are closed	Valve F3 are closed	Valve F4 are closed
Valve D1, D6 are open	Valve D2, D6 are open	Valve D3, D6 are open	Valve D4, D6 are open
Valve F2, F3, F4 are open/closed	Valve F1, F3, F4 are open/closed	Valve F1, F2, F4 are open/closed	Valve F1, F2, F3 are open/closed
Valve S1, S2, S3, S4 are sealed closed	Valve S1, S2, S3, S4 are sealed closed	Valve S1, S2, S3, S4 are sealed closed	Valve S1, S2, S3, S4 are sealed closed
Valve D2, D3, D4 are closed	Valve D1, D3, D4 are closed	Valve D1, D2, D4 are closed	Valve D1, D2, D3 are closed



FIGURE TITLE

**MADERA 19 FEDERAL COM 4H**

API

**30-025-41492**

LEASE

**NMNM93223**

CA #

OPERATOR

**MARATHON OIL PERMIAN, LLC**  
**5555 SAN FELIPE ST, HOUSTON, TEXAS 77056**

LOCATION

**LEA COUNTY, NM**

**SESW-19-T26S-R35E**  
**330 FSL & 1980 FWL**

**LAT 32.0224342**  
**LONG -103.408783**

DATE MARCH 2018

SCALE NOT TO SCALE

DRAWN BY AC

APPROVED BY JVC