

Submit 1 Copy To Appropriate District Office

District I – (575) 393-6161  
1625 N. French Dr., Hobbs, NM 88240  
District II – (575) 748-1283  
811 S. First St., Artesia, NM 88210  
District III – (505) 334-6178  
1000 Rio Brazos Rd., Aztec, NM 87410  
District IV – (505) 476-3460  
1220 S. St. Francis Dr., Santa Fe, NM 87505

State of New Mexico  
Energy, Minerals and Natural Resources

Form C-103  
Revised July 18, 2013

OIL CONSERVATION DIVISION  
1220 South St. Francis Dr.  
Santa Fe, NM 87505

WELL API NO. 30-025-12302
5. Indicate Type of Lease STATE <input checked="" type="checkbox"/> FEE <input type="checkbox"/>
6. State Oil & Gas Lease No.
7. Lease Name or Unit Agreement Name West Dollarhide Queen Sand Unit
8. Well Number 37
9. OGRID Number 309777
10. Pool name or Wildcat Dollarhide Queen
11. Elevation (Show whether DR, RKB, RT, GR, etc.) 3144' DF

SUNDRY NOTICES AND REPORTS ON WELLS  
(DO NOT USE THIS FORM FOR PROPOSALS TO DRILL OR TO DEEPEN OR PLUG BACK TO A DIFFERENT RESERVOIR. USE "APPLICATION FOR PERMIT" (FORM C-101) FOR SUCH PROPOSALS.)

1. Type of Well: Oil Well ☐ Gas Well ☒ Other Injection

2. Name of Operator  
RAM Energy LLC

3. Address of Operator  
5100 E Skelly Drive, Suite 600, Tulsa, OK 74135

4. Well Location  
Unit Letter L : 2310 feet from the South line and 330 feet from the West line  
Section 32 Township 24S Range 38E NMPM County Lea

12. Check Appropriate Box to Indicate Nature of Notice, Report or Other Data

NOTICE OF INTENTION TO:

PERFORM REMEDIAL WORK ☐ PLUG AND ABANDON ☒  
TEMPORARILY ABANDON ☐ CHANGE PLANS ☐  
PULL OR ALTER CASING ☐ MULTIPLE COMPL ☐  
DOWNHOLE COMMINGLE ☐  
CLOSED-LOOP SYSTEM ☐  
OTHER: ☐

SUBSEQUENT F

REMEDIAL WORK ☐  
COMMENCE DRILLING OPNS. ☐  
CASING/CEMENT JOB ☐

INT TO PA 7m  
P&A NR  
P&A R

OTHER:

13. Describe proposed or completed operations. (Clearly state all pertinent details, and give pertinent dates, including estimated date of starting any proposed work). SEE RULE 19.15.7.14 NMAC. For Multiple Completions: Attach wellbore diagram of proposed completion or recompletion.

The packer and tubing would be removed from the well.

We would pick up a tubing string and run back in to cement.

We would set a CIBP and cement balance plug at 3560 – 3520, a balance plug at 1260 – 1230 and a balance plug at 700 – 600.

A surface plug from 13 ft to 3 ft cut off with a welded plate.

Each plug would be tagged.

A plugging date would be set for ASAP.

NOTIFY OCD 24 HOURS PRIOR TO  
BEGINNING PLUGGING OPERATIONS

Rig Release Date:

I hereby certify that the information above is true and complete to the best of my knowledge and belief.

SIGNATURE CSwan TITLE Regulatory Administrator DATE 5/16/2018

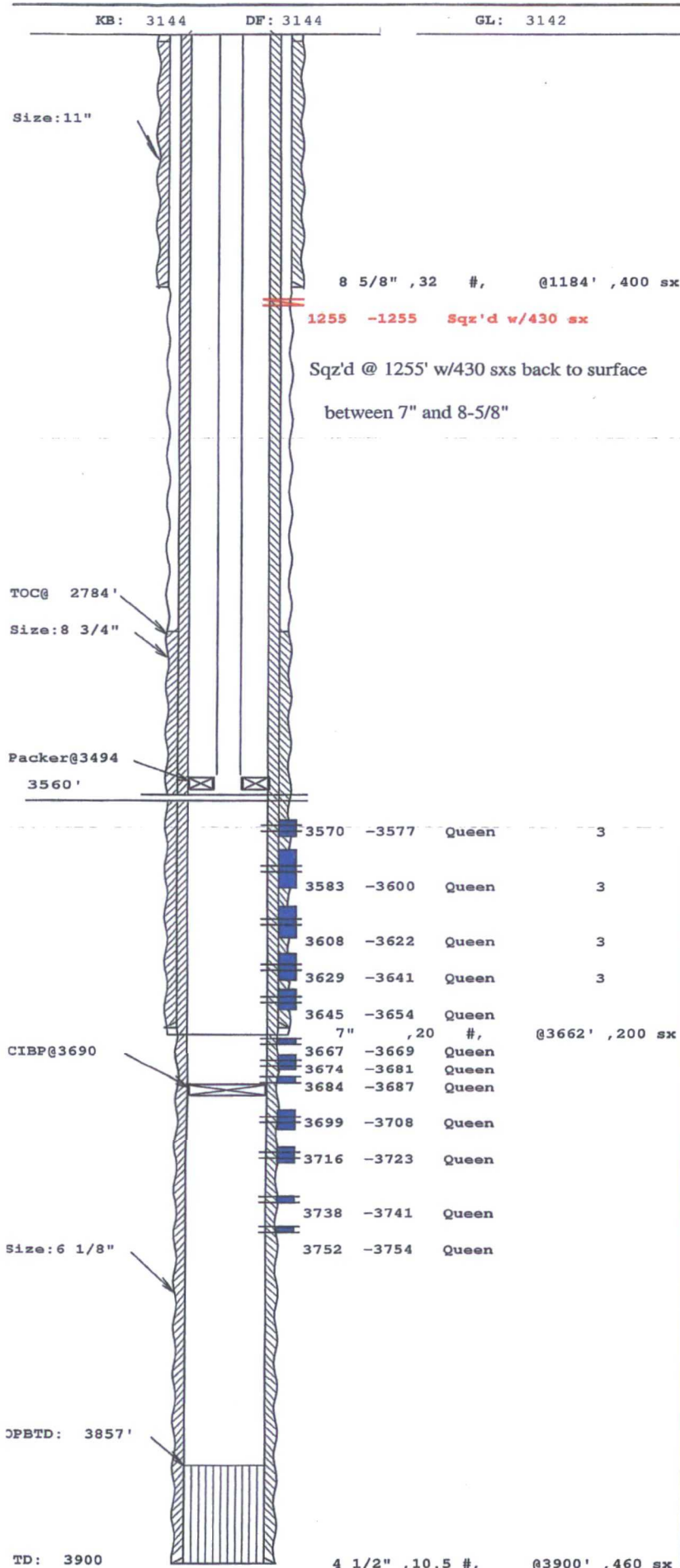
Type or print name Connie Swan E-mail address: csswan@swanderlandok.com PHONE: 918-621-6533

For State Use Only

APPROVED BY: Maheshwari TITLE P.E.S. DATE 05/23/2018

Conditions of Approval (if any):

C103 INTENT TO P&A EXPIRES  
1 YEAR FROM DATE OF APPROVAL



# Chapa il Energy, L.L.C.

Well: West Dollarhide QSU , #37 , 4087.016#37  
 Operator: CELLC  
 Location: 2310' FSL & 330' FWL, Lea Co., N  
 Legal: Sec. 32-24S-38E  
 County: Lea, NM  
 LAT/Long: /

Dir:

Spud Date: 04/06/53  
 Drilling Finished:  
 Completion Date: 05/11/53  
 First Production:

## TUBING #1:

Type	#Jts	Size	Wt#/f	Grade	Set@
IPC		2-3/8	4.7	J-55	3453

## HISTORY:

04-06-1953: Spud as Mexico "J" #8 by Skelly. TD 3,662'

05-11-1953: Completed Open Hole 3,662'- 3,770'. TOC of 7.0" @2,784' by Cal.

03-25-1974: Well P&A'd by Getty Oil

02-26-1981: Well Re-plugged by Getty oil. Perf 7.0" casing at 1255' and sqz with 175 sx to surface.

8-15-1989: Ren-entered by Sirgo-Collier, Deepened to 3,900'. Ran 4-1/2" liner from 3,900' to surface. Cmt'd w/ 460 sx, Cmt Circ. to surface. Perfs 3570-3641 Acidized w/ 3200 gal 15% NEFE. Perfs 3674-3754 Acidized w/3800 gal 15% NEFE

4-22-1993: Oxy added Perfs. 3645-3654, and 3667-3669 (26-holes), Acidized wiht 1750 gal 15% Hcl.

5-16-1997: Set CIBP at 3690', Acidized in 2 Stages w/ 2500 gal 7-1/2% HCL/35 HF acid.

8-5-1999: Acidize with 500 gal 15% NEFE. Flush with 16 bbls of fresh water.

4-6-2010: Acidize with 500 gal 15% NEFE. Flush with 15 bbls of produced water.

7-13-2010: Acidize with 500 gal 15% NEFE. Flush with 25 bbls of produced water.

3-10-17

1 1/2 JTS - 2 3/8 IPC

4 1/2 AD-1 packer

Set packer at 3494 ft.

8 5/8 screw Plange

2 3/8 bop.

Input by: Traci-BWN

Approved by:

Last Update: 01/29/14

## CONDITIONS OF APPROVAL:

- 1) Set CIBP at 3480'.
- 2) Circulate Mud Laden Fluid.
- 3) Pressure test 4 ½" casing and report results.
- 4) Spot 25 sacks Class C cement on CIBP.
- 5) POOH to 2500'. (Base of Salt)
- 6) Spot 25 sacks Class C cement.
- 7) POOH to 1305'. (Top of Salt and Surface Shoe)
- 8) Spot 25 sacks Class C cement. WOC & Tag.
- 9) POOH to 250'.
- 10) Fill to surface with Class C cement.
- 11) Cut off wellhead 3' below ground level.
- 12) Install P&A marker.