

DISTRICT I
1626 N. French Dr., Hobbs, NM 88240

DISTRICT II
811 South First, Artesia, NM 88210

DISTRICT III
1000 Rio Brazos Rd., Aztec, NM 87410

DISTRICT IV
2040 South Pacheco, Santa Fe, NM 87505

State of New Mexico
Energy, Minerals and Natural Resources Department

OIL CONSERVATION DIVISION

1220 South St. Francis Dr.
Santa Fe, New Mexico 87505

HOBBS OCD
MAY 24 2018
RECEIVED

Form C-102
Revised August 1, 2011
Submit one copy to Appropriate
District Office

☒ AMENDED REPORT

5/22/18 corrected Pool Code

WELL LOCATION AND ACREAGE DEDICATION PLAT

API Number 30-025-44606	Pool Code 98279	Pool Name WC-025 G-09 S243516B; UPR WOLFCAMP
Property Code 317499	Property Name ANGUS STATE 24-35 16	Well Number 605H
OGRID No. 162926	Operator Name ENERGEN RESOURCES CORPORATION	Elevation 3377'

Surface Location

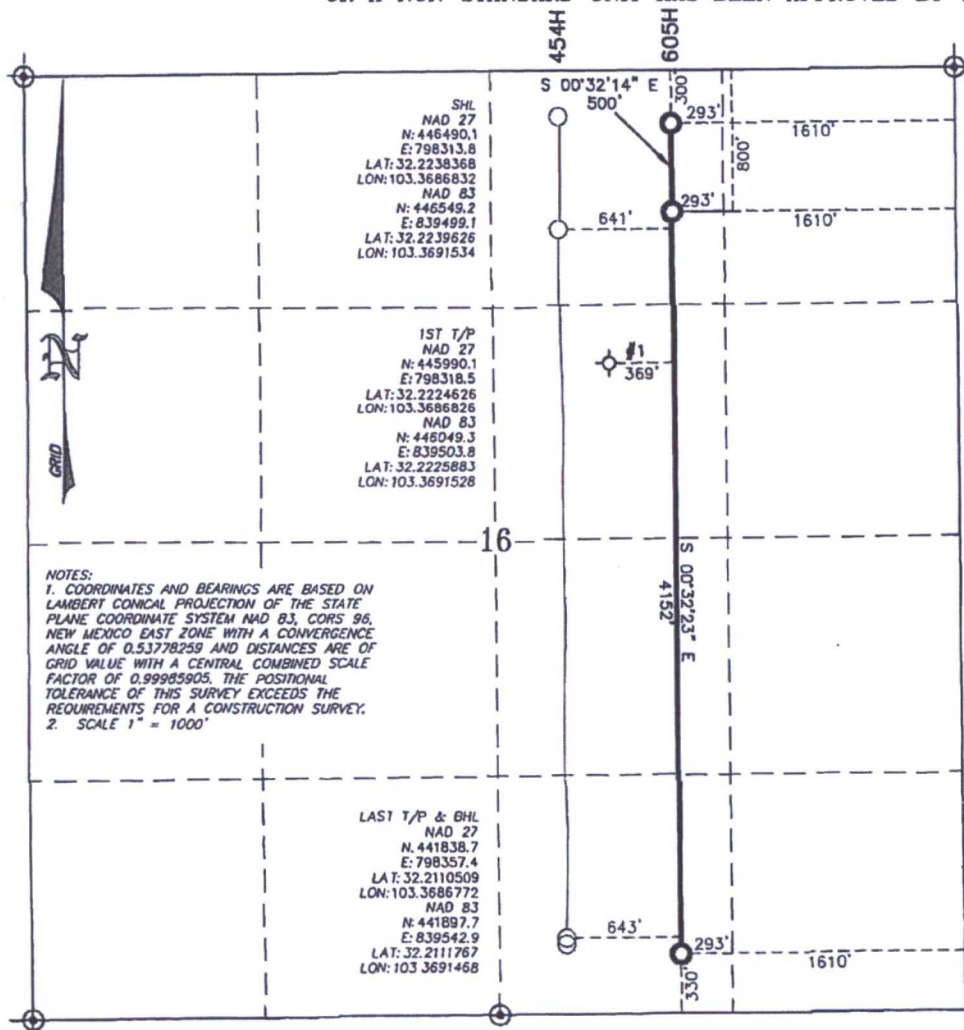
UL or lot No.	Section	Township	Range	Lot Idn	Feet from the	North/South line	Feet from the	East/West line	County
B	16	24-S	35-E		300	NORTH	1610	EAST	LEA

Bottom Hole Location If Different From Surface

UL or lot No.	Section	Township	Range	Lot Idn	Feet from the	North/South line	Feet from the	East/West line	County
O	16	24-S	35-E		330	SOUTH	1610	EAST	LEA

Dedicated Acres	Joint or Infill	Consolidation Code	Order No.
160			

NO ALLOWABLE WILL BE ASSIGNED TO THIS COMPLETION UNTIL ALL INTERESTS HAVE BEEN CONSOLIDATED
OR A NON-STANDARD UNIT HAS BEEN APPROVED BY THE DIVISION



OPERATOR CERTIFICATION

I hereby certify that the information contained herein is true and complete to the best of my knowledge and belief, and that this organization either owns a working interest or unleased mineral interest in the land including the proposed bottom hole location or has a right to drill this well at this location pursuant to a contract with an owner of such a mineral or working interest, or to a voluntary pooling agreement or compulsory pooling order heretofore entered by the division.

Brenda F. Rathjen 5/22/18
Signature Date

Brenda F. Rathjen

Printed Name

5/22/2018

Date

SURVEYOR CERTIFICATION

I hereby certify that the well location shown on this plat was plotted from the notes of actual surveys made by me or under my supervision, and that the same are correct to the best of my knowledge and belief.

NOVEMBER 15, 2017

Date Surveyed

Signature & Seal of

Professional Surveyor

FEBRUARY 20, 2018

Signature Date

Certificate No. WILSON D. WATSON JR.

P.L.S. #3959

W0917-1141-00, FILE T.PROJECTS\WATSON\WATSON

WATSON PROFESSIONAL GROUP INC