

District I  
1625 N. French Dr., Hobbs, NM 88240  
Phone: (575) 393-6161 Fax: (575) 393-0720  
District II  
811 S. First St., Artesia, NM 88210  
Phone: (575) 748-1283 Fax: (575) 748-9720  
District III  
1000 Rio Brazos Road, Aztec, NM 87410  
Phone: (505) 334-6178 Fax: (505) 334-6170  
District IV  
1220 S. St. Francis Dr., Santa Fe, NM 87505  
Phone: (505) 476-3460 Fax: (505) 476-3462

State of New Mexico  
Energy, Minerals & Natural Resources Department  
OIL CONSERVATION DIVISION  
1220 South St. Francis Dr.  
Santa Fe, NM 87505

Form C-102  
Revised August 1, 2011  
Submit one copy to appropriate  
District Office

☒ AMENDED REPORT

WELL LOCATION AND ACREAGE DEDICATION PLAT

<sup>1</sup> API Number 30-025-44271	<sup>2</sup> Pool Code 28434	<sup>3</sup> Pool Name Grama Ridge; Bone Spring, North
<sup>4</sup> Property Code 320471	<sup>5</sup> Property Name ASADERO 3 STATE COM	<sup>6</sup> Well Number 301H
<sup>7</sup> OGRID No. 372165	<sup>8</sup> Operator Name CENTENNIAL RESOURCE PRODUCTION, LLC	<sup>9</sup> Elevation 3695.0'

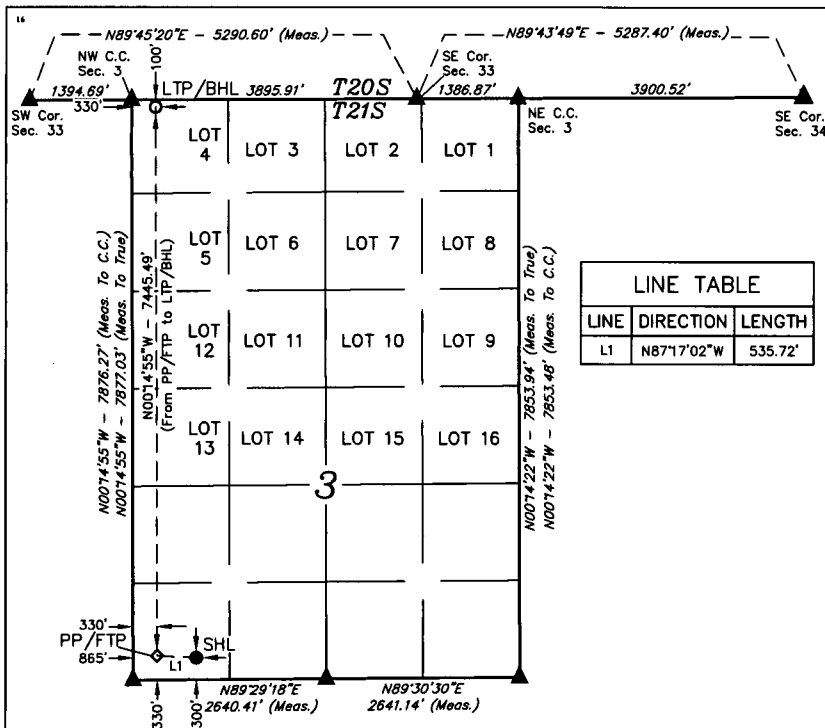
"Surface Location

UL or lot no. M	Section 3	Township 21S	Range 34E	Lot Idn	Feet from the 300	North/South line SOUTH	Feet from the 865	East/West line WEST	County LEA
--------------------	--------------	-----------------	--------------	---------	----------------------	---------------------------	----------------------	------------------------	---------------

"Bottom Hole Location If Different From Surface

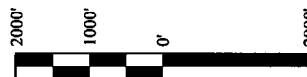
UL or lot no. 4	Section 3	Township 21S	Range 34E	Lot Idn	Feet from the 100	North/South line NORTH	Feet from the 330	East/West line WEST	County LEA
<sup>11</sup> Dedicated Acres 238.5	<sup>12</sup> Joint or Infill	<sup>13</sup> Consolidation Code	<sup>14</sup> Order No. NPL-7713						

No allowable will be assigned to this completion until all interests have been consolidated or a non-standard unit has been approved by the division.



NOTE:  
• Distances referenced on plat to section lines are perpendicular.  
• Basis of Bearing is a Transverse Mercator Projection with a Central Meridian of W103°53'00"

- = SURFACE HOLE LOCATION
- ◇ = TAKE POINT
- = BOTTOM HOLE LOCATION
- ▲ = SECTION CORNER LOCATED



SCALE

DRAWN BY: C.D. 09-27-17  
REV 2: J.N. 03-07-18 (LTP CHANGE)

<b>NAD 83 (SURFACE HOLE LOCATION)</b>
LATITUDE = 32°30'05.51" (32.501531°)
LONGITUDE = 103°27'48.73" (103.465535°)
STATE PLANE NAD 83 (N.M. EAST)
Y: 547281.63' X: 809490.90'
UTM, NAD 83 (ZONE 13)
Y: 11801383.63' X: 2113969.32'

<b>NAD 83 (PP/FTP)</b>
LATITUDE = 32°30'05.79" (32.501607°)
LONGITUDE = 103°27'54.97" (103.465270°)
STATE PLANE NAD 83 (N.M. EAST)
Y: 547304.75' X: 808955.77'
UTM, NAD 83 (ZONE 13)
Y: 11801403.41' X: 2113434.13'

<b>NAD 83 (LTP/FTP)</b>
LATITUDE = 32°31'19.45" (32.522068°)
LONGITUDE = 103°27'55.01" (103.465280°)
STATE PLANE NAD 83 (N.M. EAST)
Y: 554748.78' X: 808892.03'
UTM, NAD 83 (ZONE 13)
Y: 11808845.89' X: 2113323.83'

"OPERATOR  
CERTIFICATION

I hereby certify that the information contained herein is true and complete to the best of my knowledge and belief, and that this organization either owns a working interest or unleased mineral interest in the land including the proposed bottom hole location or has a right to drill this well at this location pursuant to a contract with an owner of such a mineral or working interest, or to a voluntary pooling agreement or a compulsory pooling order heretofore entered by the division.

Digitally signed by Melissa Luke  
DN: cn=Melissa Luke, o=US  
Oil & Gas Division, ou=Production,  
llc, ou=State of New Mexico, email=melissa.luke@cdevinc.com  
Date: 2018.05.17 15:25:59 -0600

Melissa Luke

Printed Name

melissa.luke@cdevinc.com

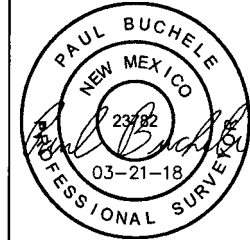
E-mail Address

"SURVEYOR  
CERTIFICATION

I hereby certify that the well location shown on this plat was plotted from field notes of actual surveys made by me or under my supervision, and that the same is true and correct to the best of my belief.

September 21, 2017

Date of Survey  
Signature and Seal of Professional Surveyor:



Certificate Number: