

District I  
1625 N. French Dr., Hobbs, NM 88240  
Phone: (575) 393-6161 Fax: (575) 393-0720  
District II  
811 S. First St., Artesia, NM 88210  
Phone: (575) 748-1283 Fax: (575) 748-9720  
District III  
1000 Rio Brazos Road, Aztec, NM 87410  
Phone: (505) 334-6178 Fax: (505) 334-6170  
District IV  
1220 S. St. Francis Dr., Santa Fe, NM 87505  
Phone: (505) 476-3460 Fax: (505) 476-3462

State of New Mexico  
Energy, Minerals & Natural Resources  
Department  
OIL CONSERVATION DIVISION  
1220 South St. Francis Dr.  
Santa Fe, NM 87505

HOBBS CSD  
JUN 25 2018  
RECEIVED

FORM C-102

Revised August 1, 2011

Submit one copy to appropriate

District Office

☐ AMENDED REPORT

WELL LOCATION AND ACREAGE DEDICATION PLAT

<sup>1</sup> API Number <b>30-025-44915</b>	<sup>2</sup> Pool Code <b>78098</b>	<sup>3</sup> Pool Name <b>WC-025 E-09 524332M; WOLF CREEK</b>
<sup>4</sup> Property Code <b>321012</b>	<sup>5</sup> Property Name <b>COSMO K 24S35E3328</b>	
<sup>6</sup> GRID No. <b>372043</b>	<sup>7</sup> Operator Name <b>TAP ROCK OPERATING, LLC.</b>	<sup>8</sup> Well Number <b>133H</b>
		<sup>9</sup> Elevation <b>3289'</b>

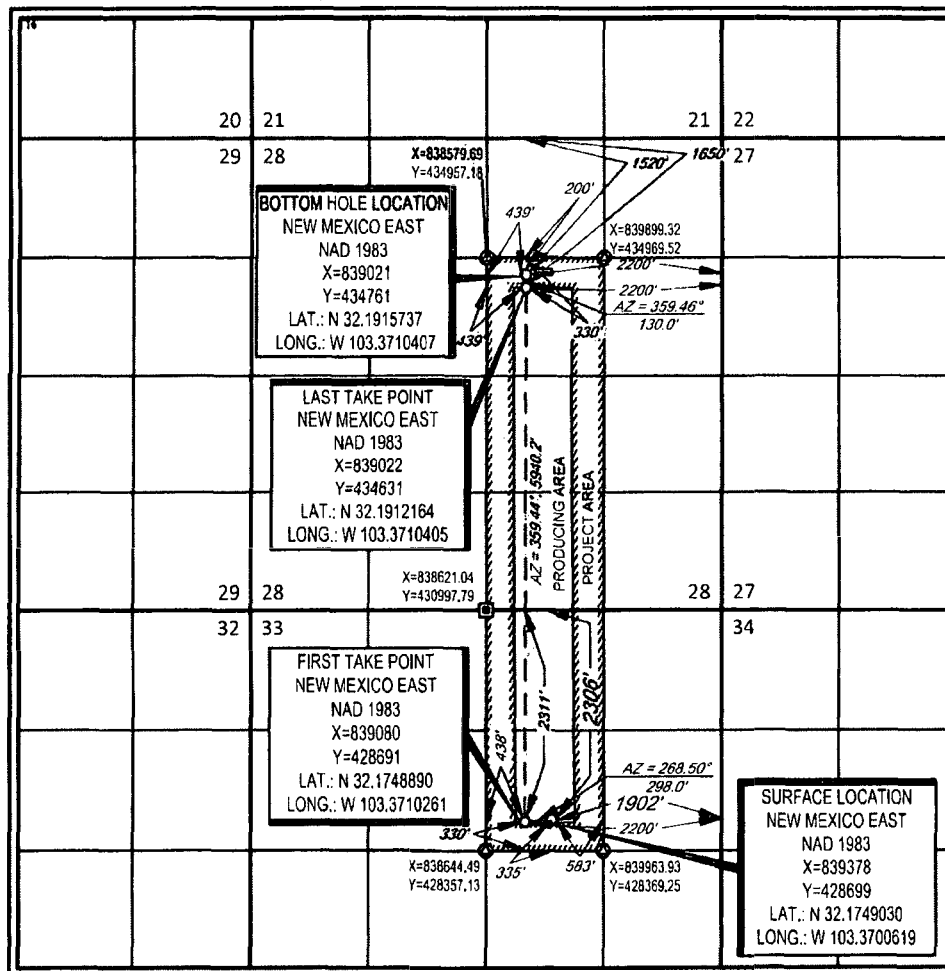
<sup>10</sup>Surface Location

UL or lot no.	Section	Township	Range	Lot Idn	Feet from the	North/South line	Feet from the	East/West line	County
<b>G</b>	<b>33</b>	<b>24-S</b>	<b>35-E</b>	<b>-</b>	<b>2306'</b>	<b>NORTH</b>	<b>1902'</b>	<b>EAST</b>	<b>LEA</b>

UL or lot no.	Section	Township	Range	Lot Idn	Feet from the	North/South line	Feet from the	East/West line	County
<b>G</b>	<b>28</b>	<b>24-S</b>	<b>35-E</b>	<b>-</b>	<b>1520'</b>	<b>NORTH</b>	<b>2200'</b>	<b>EAST</b>	<b>LEA</b>

<sup>11</sup> Dedicated Acres <b>200</b>	<sup>12</sup> Joint or Infill	<sup>13</sup> Consolidation Code	<sup>14</sup> Order No.
---	-------------------------------	----------------------------------	-------------------------

No allowable will be assigned to this completion until all interests have been consolidated or a non-standard unit has been approved by the division.



<sup>17</sup>OPERATOR CERTIFICATION

I hereby certify that the information contained herein is true and complete to the best of my knowledge and belief, and that this organization either owns a working interest or undivided mineral interest in the land including the proposed bottom hole location or has a right to drill this well at this location pursuant to a contract with an owner of such a mineral or working interest, or to a voluntary pooling agreement or a compulsory pooling order heretofore entered by the division.

*Erica Hixson* 6/25/18  
Signature Date

Erica Hixson  
Printed Name

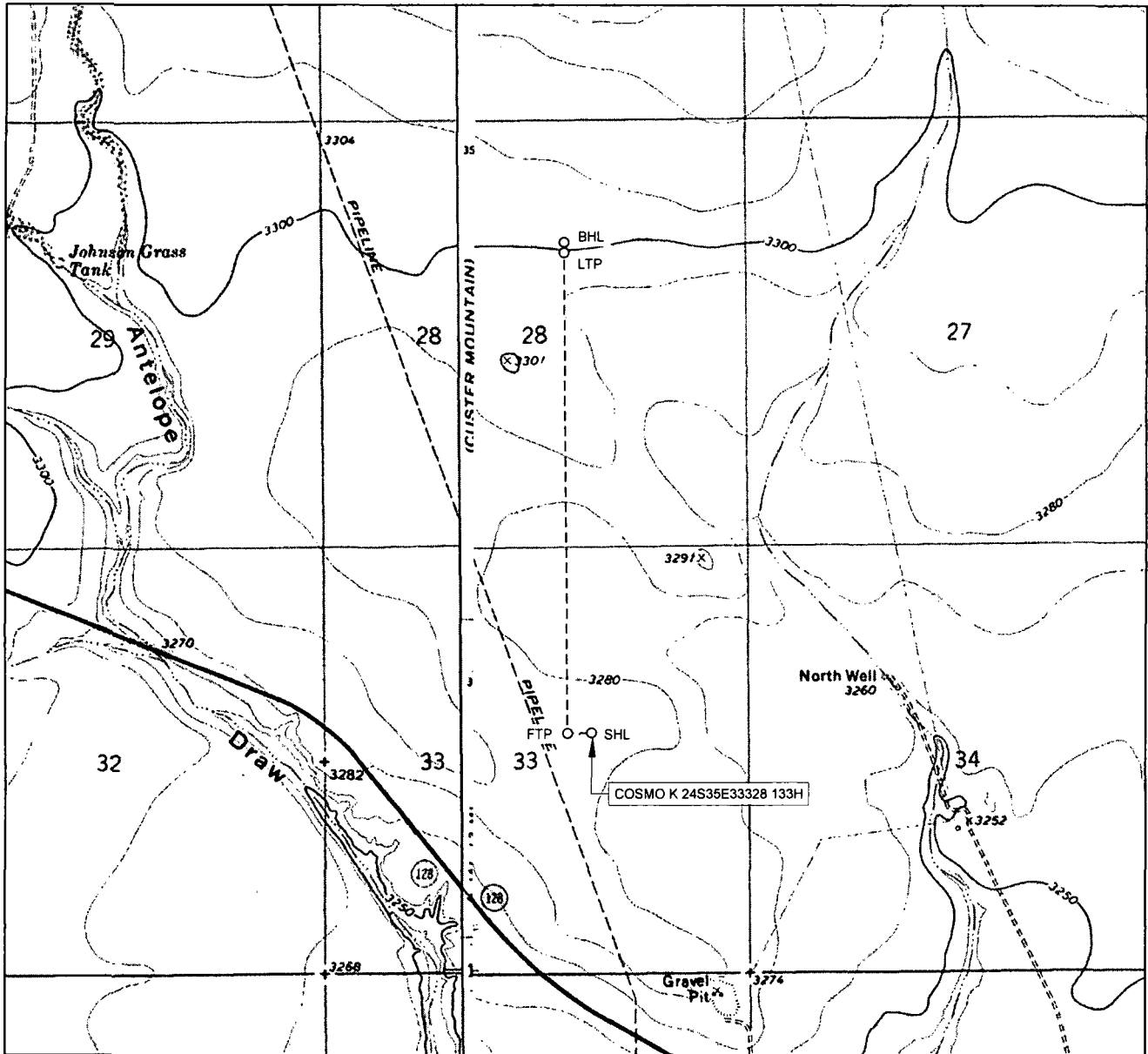
ehixson@taprock.com  
E-mail Address

<sup>18</sup>SURVEYOR CERTIFICATION

I hereby certify that the well location shown on this plat was plotted from field notes of actual surveys made by me or under my supervision, and that the same is true to the best of my belief.

06/25/2018  
Date of Survey  
Signature and Seal of Professional Surveyor  
**NEW MEXICO**  
**18329**  
**PROFESSIONAL SURVEYOR**  
Certificate Number

# LOCATION & ELEVATION VERIFICATION MAP



LEASE NAME & WELL NO.: COSMO K 24S35E33328 133H

SECTION 33 TWP 24-S RGE 35-E SURVEY N.M.P.M.  
 COUNTY LEA STATE NM ELEVATION 3289'  
 DESCRIPTION 2306' FNL & 1902' FEL

LATITUDE N 32.1749030 LONGITUDE W 103.3700619



SCALE: 1" = 2000'  
 0' 1000' 2000'

THIS EASEMENT/SERVITUDE LOCATION SHOWN HEREON HAS BEEN SURVEYED ON THE GROUND UNDER MY SUPERVISION AND PREPARED ACCORDING TO THE EVIDENCE FOUND AT THE TIME OF SURVEY, AND DATA PROVIDED BY TAP ROCK OPERATING, LLC. THIS CERTIFICATION IS MADE AND LIMITED TO THOSE PERSONS OR ENTITIES SHOWN ON THE FACE OF THIS PLAT AND IS NON-TRANSFERABLE. THIS SURVEY IS CERTIFIED FOR THIS TRANSACTION ONLY.

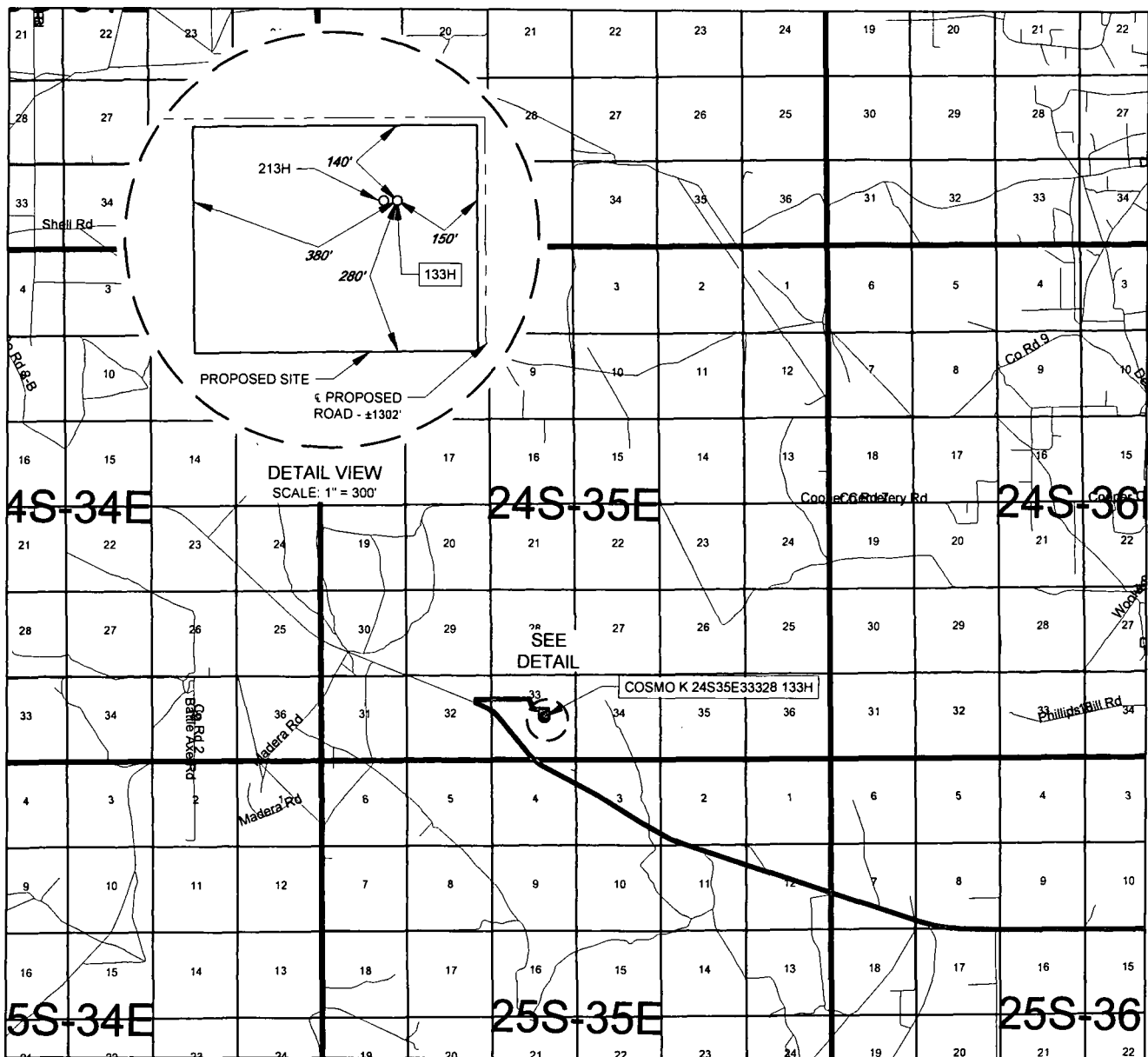
ALL BEARINGS, DISTANCES, AND COORDINATE VALUES CONTAINED HEREON ARE GRID BASED UPON THE NEW MEXICO COORDINATE SYSTEM OF 1983, EAST ZONE, U.S. SURVEY FEET.



**TOPOGRAPHIC**  
 LOYALTY INNOVATION LEGACY

1400 EVERMAN PARKWAY, Ste. 146 • FT. WORTH, TEXAS 76140  
 TELEPHONE: (817) 744-7512 • FAX (817) 744-7554  
 2903 NORTH BIG SPRING • MIDLAND, TEXAS 79705  
 TELEPHONE: (432) 682-1653 OR (800) 787-1653 • FAX (432) 682-1743  
 WWW.TOPOGRAPHIC.COM

# EXHIBIT 2 VICINITY MAP



LEASE NAME & WELL NO.: COSMO K 24S35E33328 133H

SECTION 33 TWP 24-S RGE 35-E SURVEY N.M.P.M.  
COUNTY LEA STATE NM  
DESCRIPTION 2306' FNL & 1902' FEL

## DISTANCE & DIRECTION

FROM INT. OF NM-128 & NM-18, GO WEST ON NM-128 ±12.4 MILES,  
THENCE NORTH (RIGHT) ON A PROPOSED RD. ±110 FEET, THENCE  
EAST (RIGHT) ON A PROPOSED RD. ±0.6 MILES, THENCE SOUTH  
RIGHT ON A PROPOSED RD. ±0.1 MILES, THENCE EAST (LEFT) ON A  
PROPOSED RD. ±1302 FEET TO A POINT ±313 FEET SOUTHEAST OF  
THE LOCATION.

THIS EASEMENT/SERVITUDE LOCATION SHOWN HEREON HAS BEEN SURVEYED ON THE GROUND UNDER MY SUPERVISION AND PREPARED ACCORDING TO THE EVIDENCE FOUND AT THE TIME OF SURVEY, AND DATA PROVIDED BY TAP ROCK OPERATING, LLC. THIS CERTIFICATION IS MADE AND LIMITED TO THOSE PERSONS OR ENTITIES SHOWN ON THE FACE OF THIS PLAT AND IS NON-TRANSFERABLE. THIS SURVEY IS CERTIFIED FOR THIS TRANSACTION ONLY.

ALL BEARINGS, DISTANCES, AND COORDINATE VALUES CONTAINED HEREON ARE GRID BASED UPON THE NEW MEXICO COORDINATE SYSTEM OF 1983, EAST ZONE, U.S. SURVEY FEET.



SCALE: 1" = 10000'  
0' 5000' 10000'

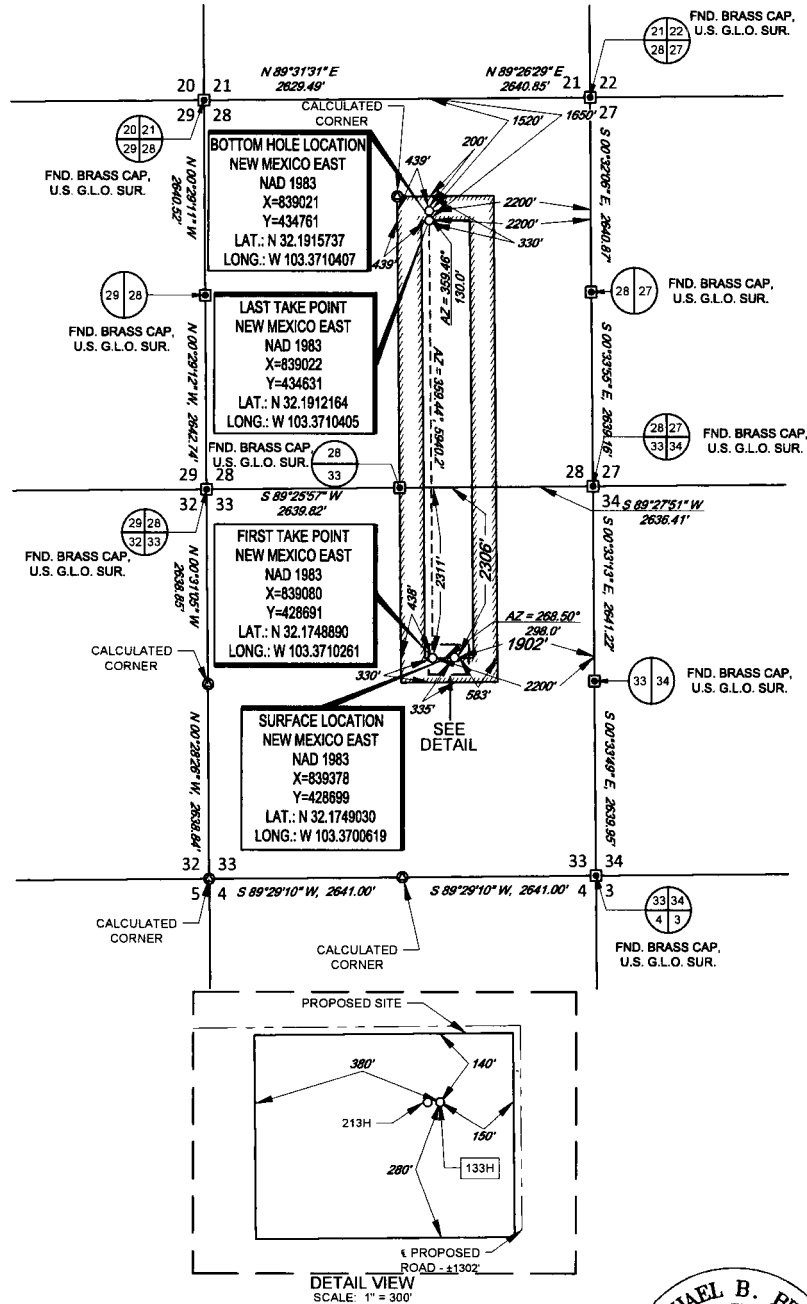


**TOPOGRAPHIC**  
LOYALTY INNOVATION LEGACY

1400 EVERMAN PARKWAY, Ste. 146 • FT. WORTH, TEXAS 76140  
TELEPHONE: (817) 744-7512 • FAX (817) 744-7554  
2903 NORTH BIG SPRING • MIDLAND, TEXAS 79705  
TELEPHONE: (432) 682-1653 OR (800) 767-1653 • FAX (432) 682-1743  
WWW.TOPOGRAPHIC.COM

# TAP ROCK EXHIBIT 2A

SECTION 33, TOWNSHIP 24-S, RANGE 35-E, N.M.P.M.  
LEA COUNTY, NEW MEXICO



SCALE: 1" = 2000'  
0' 1000' 2000'

LEASE NAME & WELL NO.: COSMO K 24S35E3328 133H

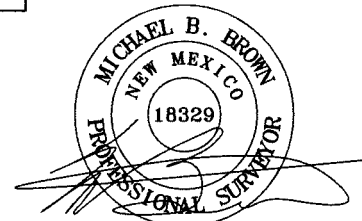
SECTION 33 TWP 24-S RGE 35-E SURVEY N.M.P.M.  
COUNTY LEA STATE NM  
DESCRIPTION 2306' FNL & 1902' FEL

## DISTANCE & DIRECTION

FROM INT. OF NM-128 & NM-18, GO WEST ON NM-128 ±12.4 MILES,  
THENCE NORTH (RIGHT) ON A PROPOSED RD. ±110 FEET, THENCE  
EAST (RIGHT) ON A PROPOSED RD. ±0.6 MILES, THENCE SOUTH  
RIGHT ON A PROPOSED RD. ±0.1 MILES, THENCE EAST (LEFT) ON A  
PROPOSED RD. ±1302 FEET TO A POINT ±313 FEET SOUTHEAST OF  
THE LOCATION.

ALL BEARINGS, DISTANCES, AND COORDINATE VALUES CONTAINED HEREON ARE GRID  
BASED UPON THE NEW MEXICO COORDINATE SYSTEM OF 1983, EAST ZONE, U.S. SURVEY  
FEET.

THIS EASEMENT/SERVITUDE LOCATION SHOWN HEREON HAS BEEN SURVEYED ON THE GROUND  
UNDER MY SUPERVISION AND PREPARED ACCORDING TO THE EVIDENCE FOUND AT THE TIME OF  
SURVEY, AND DATA PROVIDED BY TAP ROCK OPERATING, LLC THIS CERTIFICATION IS MADE AND  
LIMITED TO THOSE PERSONS OR ENTITIES SHOWN ON THE FACE OF THIS PLAT AND IS  
NON-TRANSFERABLE. THIS SURVEY IS CERTIFIED FOR THIS TRANSACTION ONLY.



Stan W. Lloyd, P.S. No. 19642  
JUNE 7, 2018



**TOPOGRAPHIC**  
LOYALTY INNOVATION LEGACY

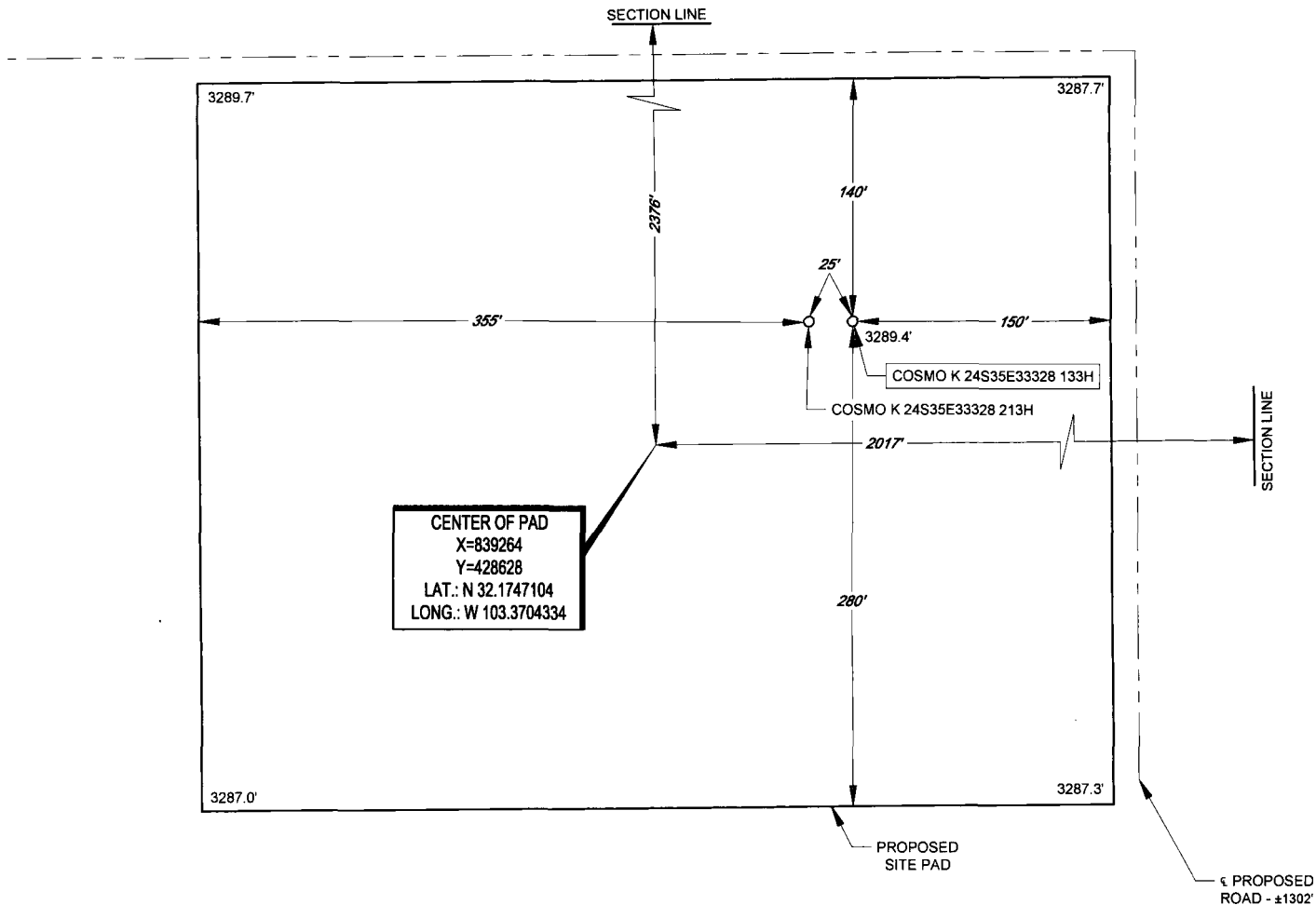
1400 EVERMAN PARKWAY, Ste. 146 • FT. WORTH, TEXAS 76140  
TELEPHONE: (817) 744-7512 • FAX: (817) 744-7554  
2903 NORTH BIG SPRING • MIDLAND, TEXAS 79705  
TELEPHONE: (432) 682-1653 OR (800) 767-1653 • FAX: (432) 682-1743  
WWW.TOPOGRAPHIC.COM

# EXHIBIT 2B



SECTION 33, TOWNSHIP 24-S, RANGE 35-E, N.M.P.M.  
LEA COUNTY, NEW MEXICO

DETAIL VIEW  
SCALE: 1" = 100'



LEASE NAME & WELL NO.: COSMO K 24S35E3328 133H  
133H LATITUDE N 32.1749030 133H LONGITUDE W 103.3700619

## LEGEND

— — — — — PROPOSED ROAD  
— — — — — SECTION LINE

CENTER OF PAD IS 2376' FSL & 2017' FWL



SCALE: 1" = 100'  
0' 50' 100'

ALL BEARINGS, DISTANCES, AND COORDINATE VALUES CONTAINED HEREON ARE GRID BASED UPON THE NEW MEXICO COORDINATE SYSTEM OF 1983, EAST ZONE, U.S. SURVEY FEET.

THIS PROPOSED PAD SITE LOCATION SHOWN HEREON HAS BEEN SURVEYED ON THE GROUND UNDER MY SUPERVISION AND PREPARED ACCORDING TO THE EVIDENCE FOUND AT THE TIME OF SURVEY, AND DATA PROVIDED BY TAP ROCK OPERATING, LLC. THIS CERTIFICATION IS MADE AND LIMITED TO THOSE PERSONS OR ENTITIES SHOWN ON THE FACE OF THIS PLAT AND IS NON-TRANSFERABLE. THIS SURVEY IS CERTIFIED FOR THIS TRANSACTION ONLY.



**TOPOGRAPHIC**  
LOYALTY INNOVATION LEGACY

1400 EVERMAN PARKWAY, Ste. 148 • FT. WORTH, TEXAS 76140  
TELEPHONE: (817) 744-7512 • FAX: (817) 744-7554  
2903 NORTH BIG SPRING • MIDLAND, TEXAS 79705  
TELEPHONE: (432) 682-1653 OR (800) 767-1653 • FAX: (432) 682-1743  
WWW.TOPOGRAPHIC.COM