

District I
1625 N. French Dr., Hobbs, NM 88240
Phone: (575) 393-6161 Fax: (575) 393-0720
District II
811 S. First St., Artesia, NM 88210
Phone: (575) 748-1283 Fax: (575) 748-1284
District III
1000 Rio Brazos Road, Aztec, NM 87410
Phone: (505) 334-6178 Fax: (505) 334-6170
District IV
1220 S. St. Francis Dr., Santa Fe, NM 87505
Phone: (505) 476-3460 Fax: (505) 476-3462

HOBBBS OCD
JUN 14 2018
RECEIVED
State of New Mexico
Energy, Minerals & Natural Resources Department
OIL CONSERVATION DIVISION
1220 South St. Francis Dr.
Santa Fe, NM 87505

Form C-102
Revised August 1, 2011
Submit one copy to appropriate
District Office

AMENDED REPORT

"As Drilled"

WELL LOCATION AND ACREAGE DEDICATION PLAT

1 API Number 30-025-44289	2 Pool Code 44553	3 Pool Name Ojo Chiso, Bone Spring
4 Property Code	5 Property Name TOUR BUS 23 STATE	6 Well Number 301H
7 OGRID No. 3421105	8 Operator Name CENTENNIAL RESOURCE PRODUCTION, LLC	9 Elevation 3489.3'

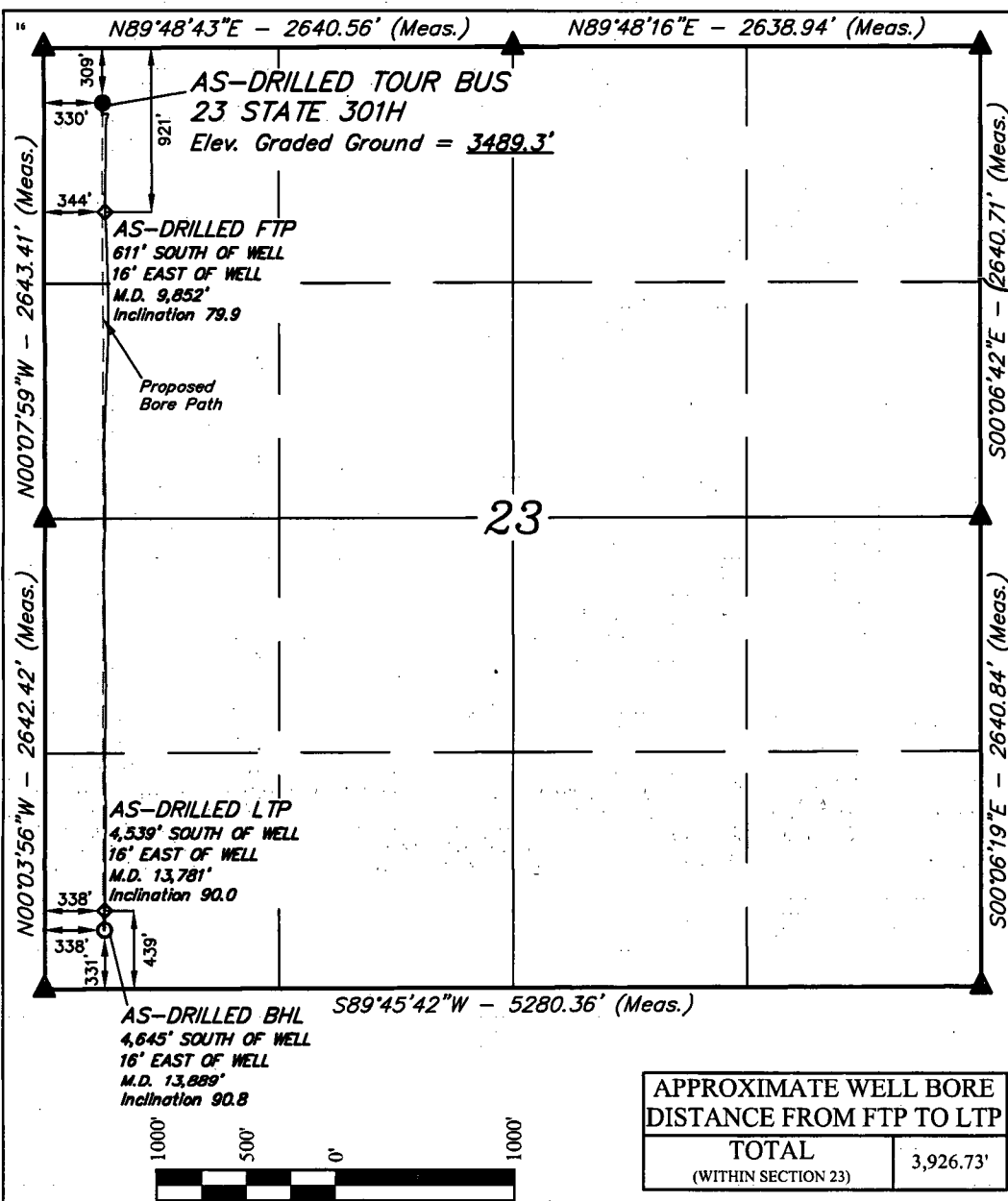
10 Surface Location

UL or lot no. D	Section 23	Township 22S	Range 34E	Lot Idn	Feet from the 309	North/South line NORTH	Feet from the 330	East/West line WEST	County LEA
--------------------	---------------	-----------------	--------------	---------	----------------------	---------------------------	----------------------	------------------------	---------------

11 Bottom Hole Location If Different From Surface

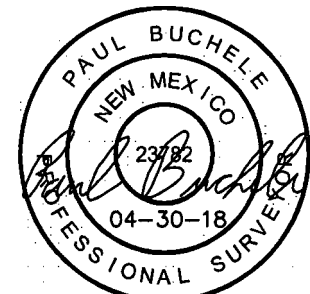
UL or lot no. M	Section 23	Township 22S	Range 34E	Lot Idn	Feet from the 331	North/South line SOUTH	Feet from the 338	East/West line WEST	County LEA
12 Dedicated Acres 160	13 Joint or Infill	14 Consolidation Code	15 Order No.						

No allowable will be assigned to this completion until all interests have been consolidated or a non-standard unit has been approved by the division.



16 OPERATOR CERTIFICATION
I hereby certify that the information contained herein is true and complete to the best of my knowledge and belief, and that this organization either owns a working interest or unleased mineral interest in the land including the proposed bottom hole location or has a right to drill this well at this location pursuant to a contract with an owner of such a mineral or working interest, or to a voluntary pooling agreement or a compulsory pooling order heretofore entered by the division.
Signature: [Signature]
Date: 06/13/18
Printed Name: Melissa Luke
E-mail Address: melissaluke@rdwinc.com

17 SURVEYOR CERTIFICATION
I hereby certify that the well location shown on this plat was plotted from field notes of actual surveys made by me or under my supervision, and that the same is true and correct to the best of my belief.
January 12, 2018
Date of Survey
Signature and Seal of Professional Surveyor:



APPROXIMATE WELL BORE DISTANCE FROM FTP TO LTP	
TOTAL	3,926.73'
(WITHIN SECTION 23)	

NOTE:
• Distances referenced on plat to section lines are perpendicular.
• Basis of Bearing is a Transverse Mercator Projection with a Central Meridian of W103°53'00"

- = AS-DRILLED SURFACE HOLE LOCATION
- ◇ = AS-DRILLED FIRST TAKE POINT/LAST TAKE POINT
- = AS-DRILLED BOTTOM HOLE
- ▲ = SECTION CORNER LOCATED

NAD 83 (AS-DRILLED SHL)
LATITUDE = 32°23'01.01" (32.383613°)
LONGITUDE = 103°26'53.64" (103.448234°)
STATE PLANE NAD 83 (NM EAST)
Y: 504420.13' X: 814563.79'
UTM, NAD 83 (ZONE 13)
Y: 11758560.36' X: 2119309.02'

NAD 83 (AS-DRILLED FTP)
LATITUDE = 32°22'54.96" (32.381933°)
LONGITUDE = 103°26'53.49" (103.448191°)
STATE PLANE NAD 83 (NM EAST)
Y: 503809.18' X: 814582.10'
UTM, NAD 83 (ZONE 13)
Y: 11757949.61' X: 2119331.14'

NAD 83 (AS-DRILLED LTP)
LATITUDE = 32°22'16.12" (32.371144°)
LONGITUDE = 103°26'53.67" (103.448242°)
STATE PLANE NAD 83 (NM EAST)
Y: 499884.03' X: 814599.07'
UTM, NAD 83 (ZONE 13)
Y: 11754025.16' X: 2119372.57'

NAD 83 (AS-DRILLED BHL)
LATITUDE = 32°22'15.05" (32.370848°)
LONGITUDE = 103°26'53.67" (103.448243°)
STATE PLANE NAD 83 (NM EAST)
Y: 499776.05' X: 814599.68'
UTM, NAD 83 (ZONE 13)
Y: 11753917.20' X: 2119373.85'

SCALE
DRAWN BY: C.D. 04-30-18