

District I  
1625 N. French Dr., Hobbs, NM 88240  
Phone: (575) 393-6161 Fax: (575) 393-0720  
District II  
811 S. First St., Artesia, NM 88210  
Phone: (575) 748-1283 Fax: (575) 748-9720  
District III  
1000 Rio Brazos Road, Aztec, NM 87410  
Phone: (505) 334-6178 Fax: (505) 334-6170  
District IV  
1220 S. St. Francis Dr., Santa Fe, NM 87505  
Phone: (505) 476-3460 Fax: (505) 476-3462

State of New Mexico  
Energy, Minerals & Natural Resources Department  
OIL CONSERVATION DIVISION  
1220 South St. Francis Dr.  
Santa Fe, NM 87505

HOBBS OCD  
JUN 14 2018  
RECEIVED

Form C-102  
Revised August 1, 2011  
Submit one copy to appropriate  
District Office  
AMENDED REPORT

WELL LOCATION AND ACREAGE DEDICATION PLAT

1 API Number 30-025-44290	2 Pool Code 90553	3 Pool Name Ojo Chino, Bone Spring
4 Property Code 318034	5 Property Name TOUR BUS 23 STATE	6 Well Number 601H
7 OGRD No. 372105	8 Operator Name CENTENNIAL RESOURCE PRODUCTION, LLC	9 Elevation 3489.4'

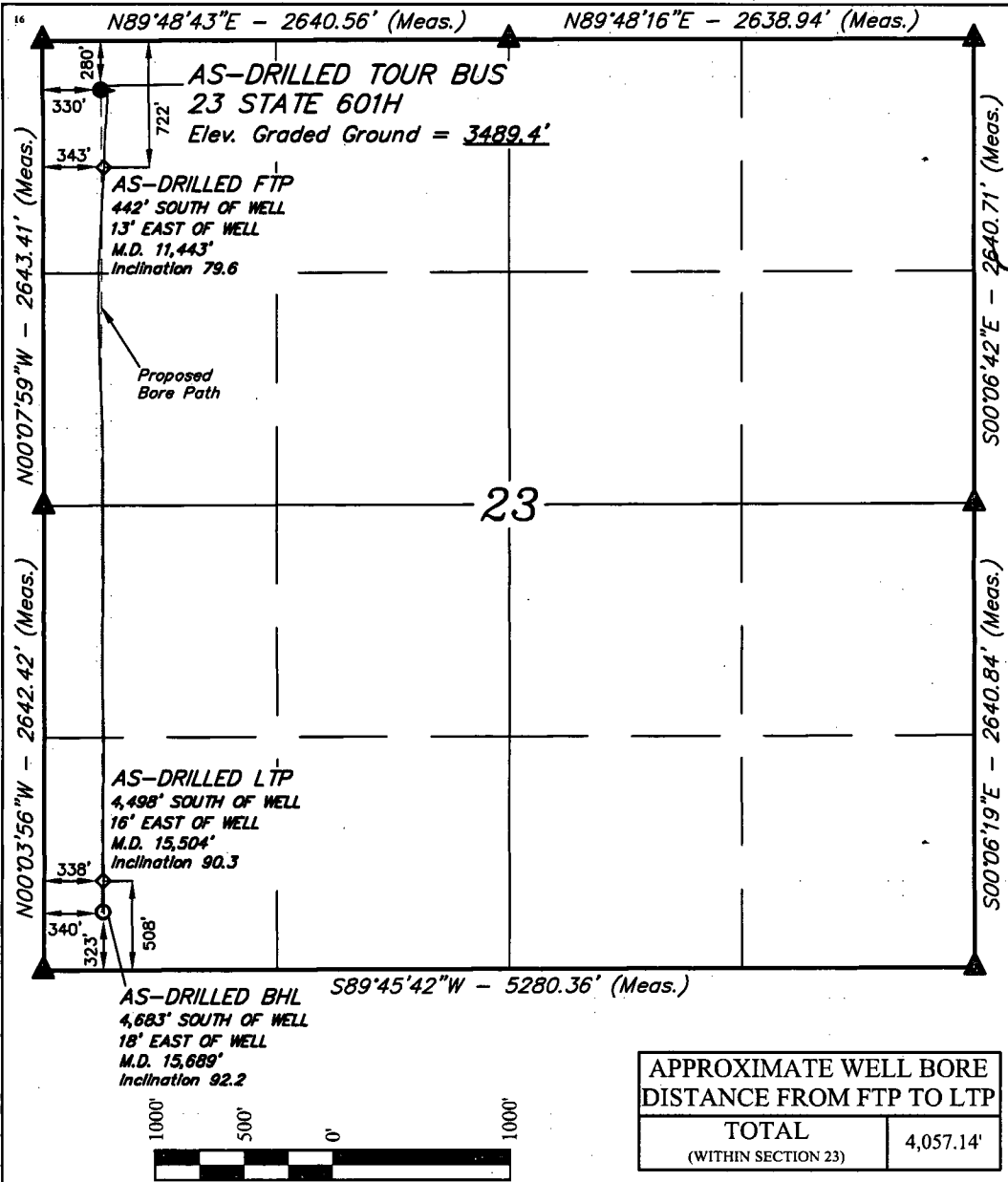
10 Surface Location

UL or lot no. D	Section 23	Township 22S	Range 34E	Lot Idn	Feet from the 280	North/South line NORTH	Feet from the 330	East/West line WEST	County LEA
--------------------	---------------	-----------------	--------------	---------	----------------------	---------------------------	----------------------	------------------------	---------------

11 Bottom Hole Location If Different From Surface

UL or lot no. M	Section 23	Township 22S	Range 34E	Lot Idn	Feet from the 323	North/South line SOUTH	Feet from the 340	East/West line WEST	County LEA
12 Dedicated Acres 160	13 Joint or Infill	14 Consolidation Code	15 Order No.						

No allowable will be assigned to this completion until all interests have been consolidated or a non-standard unit has been approved by the division.



17 OPERATOR CERTIFICATION  
I hereby certify that the information contained herein is true and complete to the best of my knowledge and belief, and that this organization either owns a working interest or unleased mineral interest in the land including the proposed bottom hole location or has a right to drill this well at this location pursuant to a contract with an owner of such a mineral or working interest, or to a voluntary pooling agreement or a compulsory pooling order heretofore entered by the division.  
Signature: [Signature] Date: 06/13/18  
Printed Name: Melissa Luke  
E-mail Address: melissa.luke@cedarvinc.com

18 SURVEYOR CERTIFICATION  
I hereby certify that the well location shown on this plat was plotted from field notes of actual surveys made by me or under my supervision, and that the same is true and correct to the best of my belief.  
January 12, 2018  
Date of Survey  
Signature and Seal of Professional Surveyor:



NAD 83 (AS-DRILLED SHL) LATITUDE = 32°23'01.30" (32.383694°) LONGITUDE = 103°26'53.64" (103.448234°) STATE PLANE NAD 83 (NM EAST) Y: 504449.70' X: 814563.66' UTM, NAD 83 (ZONE 13) Y: 11758589.91' X: 2119308.71'	NAD 83 (AS-DRILLED FTP) LATITUDE = 32°22'56.92" (32.382478°) LONGITUDE = 103°26'53.51" (103.448196°) STATE PLANE NAD 83 (NM EAST) Y: 504007.50' X: 814578.91' UTM, NAD 83 (ZONE 13) Y: 11758147.88' X: 2119326.71'
NAD 83 (AS-DRILLED LTP) LATITUDE = 32°22'16.80" (32.371332°) LONGITUDE = 103°26'53.67" (103.448242°) STATE PLANE NAD 83 (NM EAST) Y: 499952.36' X: 814598.27' UTM, NAD 83 (ZONE 13) Y: 11754093.48' X: 2119371.34'	NAD 83 (AS-DRILLED BHL) LATITUDE = 32°22'14.97" (32.370824°) LONGITUDE = 103°26'53.65" (103.448236°) STATE PLANE NAD 83 (NM EAST) Y: 499767.51' X: 814601.78' UTM, NAD 83 (ZONE 13) Y: 11753908.68' X: 2119376.00'

NOTE:  
• Distances referenced on plat to section lines are perpendicular.  
• Basis of Bearing is a Transverse Mercator Projection with a Central Meridian of W103°53'00"  
● = AS-DRILLED SURFACE HOLE LOCATION  
◆ = AS-DRILLED FIRST TAKE POINT/LAST TAKE POINT  
○ = AS-DRILLED BOTTOM HOLE  
▲ = SECTION CORNER LOCATED

Certificate Number: