

District I  
1625 N. French Dr., Hobbs, NM 88240  
Phone: (575) 393-6161 Fax: (575) 393-0720  
District II  
811 S. First St., Artesia, NM 88210  
Phone: (575) 748-1283 Fax: (575) 748-9720  
District III  
1000 Rio Brazos Road, Aztec, NM 87410  
Phone: (505) 334-6178 Fax: (505) 334-6170  
District IV  
1220 S. St. Francis Dr., Santa Fe, NM 87505  
Phone: (505) 476-3460 Fax: (505) 476-3462

State of New Mexico  
Energy, Minerals & Natural Resources  
Department  
OIL CONSERVATION DIVISION  
1220 South St. Francis Dr.  
Santa Fe, NM 87505

FORM C-102

Revised August 1, 2011

Submit one copy to appropriate

District Office

☐ AMENDED REPORT

WELL LOCATION AND ACREAGE DEDICATION PLAT

<sup>1</sup> API Number 30-025-44229	<sup>2</sup> Pool Code 98234	<sup>3</sup> Pool Name WC-025 G-09 S263619C; WOLFCAMP
<sup>4</sup> Property Code 319731	<sup>5</sup> Property Name AZALEA 26 36 28 STATE	<sup>6</sup> Well Number 121Y
<sup>7</sup> OGRID No. 372224	<sup>8</sup> Operator Name AMEREDEV OPERATING, LLC	<sup>9</sup> Elevation 2921'

<sup>10</sup>Surface Location

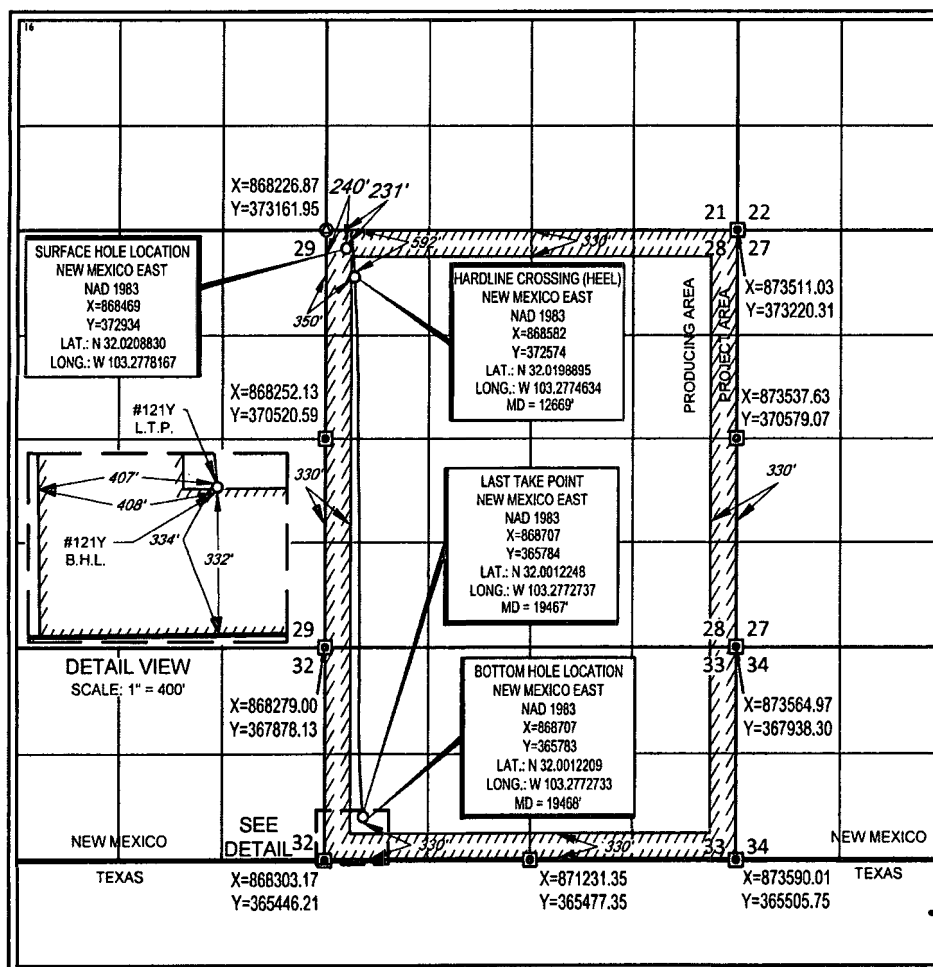
UL or lot no.	Section	Township	Range	Lot Idn	Feet from the	North/South line	Feet from the	East/West line	County
D	28	26-S	36-E	-	231'	NORTH	240'	WEST	LEA

<sup>11</sup>Bottom Hole Location If Different From Surface

UL or lot no.	Section	Township	Range	Lot Idn	Feet from the	North/South line	Feet from the	East/West line	County
4 E	33	26-S	36-E	-	332'	SOUTH	408'	WEST	LEA

<sup>12</sup> Dedicated Acres 233.75	<sup>13</sup> Joint or Infill	<sup>14</sup> Consolidation Code	<sup>15</sup> Order No.
---	-------------------------------	----------------------------------	-------------------------

No allowable will be assigned to this completion until all interests have been consolidated or a non-standard unit has been approved by the division.



<sup>17</sup>OPERATOR CERTIFICATION

I hereby certify that the information contained herein is true and complete to the best of my knowledge and belief, and that this organization either owns a working interest or unleased mineral interest in the land including the proposed bottom hole location or has a right to drill this well at this location pursuant to a contract with an owner of such a mineral or working interest, or to a voluntary pooling agreement or a compulsory pooling order heretofore entered by the division.

Signature: *Floyd Hammond* Date: 7/18/18

Printed Name: Floyd Hammond

E-mail Address: fhammond@ameredev.com

<sup>18</sup>SURVEYOR CERTIFICATION

I hereby certify that the well location shown on this plat was plotted from field notes of actual surveys made by me or under my supervision, and that the same is true to the best of my belief.

Date of Survey: 7/18/18  
Signature and Seal of Professional Surveyor

19842

PROFESSIONAL SURVEYOR

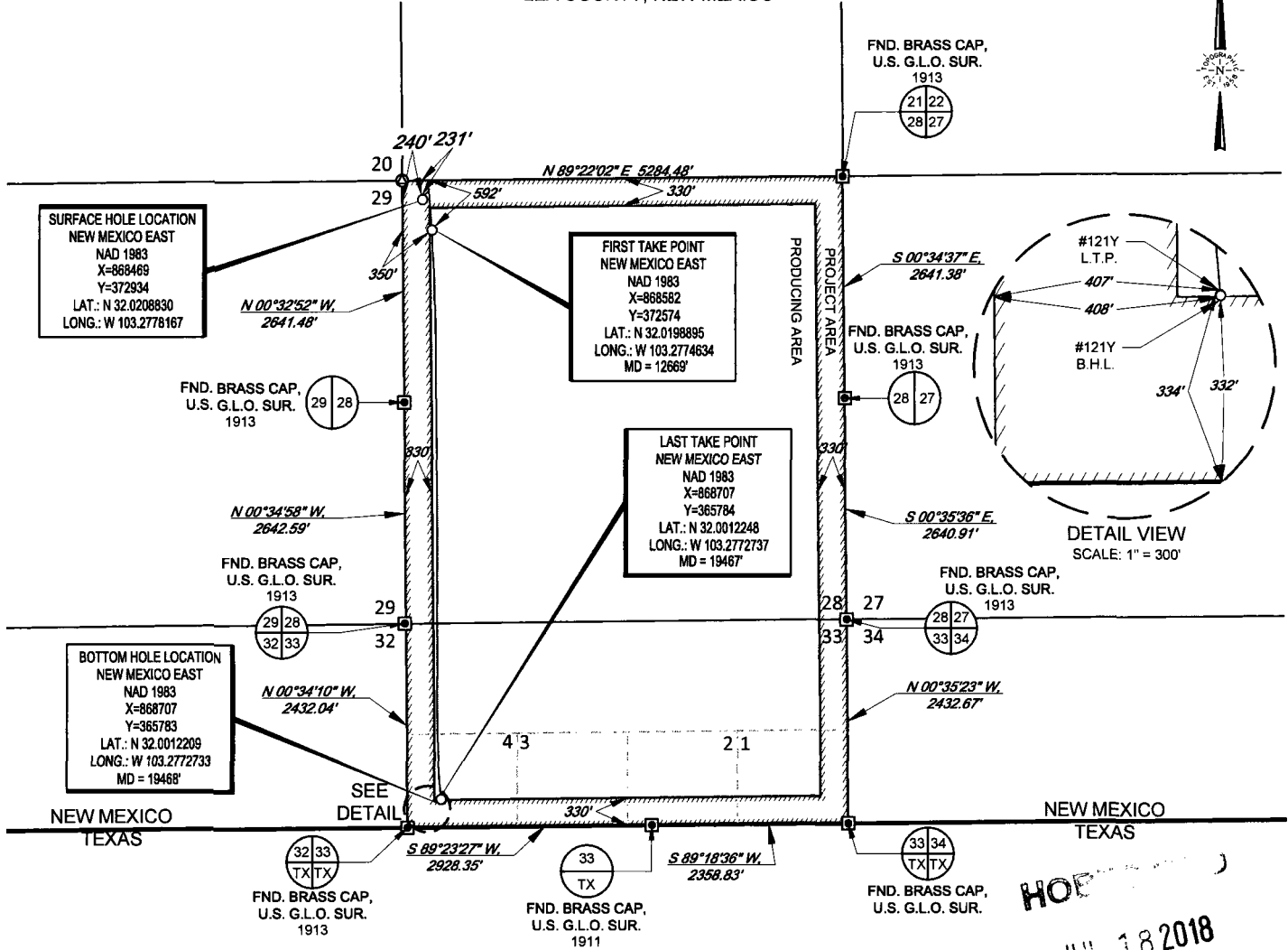
Stan W. Lloyd

Certificate Number

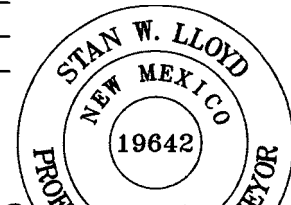
SCALE: 1" = 1000'

0' 500' 1000'

SECTION 28, TOWNSHIP 26-S, RANGE 36-E, N.M.P.M.  
LEA COUNTY, NEW MEXICO



LEASE NAME & WELL NO.: AZALEA STATE 26 36 28 121Y  
SECTION 28 TWP 26-S RGE 36-E SURVEY N.M.P.M.  
COUNTY LEA STATE NM ELEVATION 2921'  
DESCRIPTION 231' FNL & 240' FWL



*Stan W. Lloyd*  
Stan W. Lloyd, P.S. No. 19642  
JULY 17, 2018

**AMEREDEV**  
AMEREDEV OPERATING, LLC

**TOPOGRAPHIC**  
LOYALTY INNOVATION LEGACY  
1400 EVERMAN PARKWAY, Ste. 146 • FT. WORTH, TEXAS 76140  
TELEPHONE: (817) 744-7512 • FAX: (817) 744-7548  
TEXAS FIRM REGISTRATION NO. 10042504  
WWW.TOPOGRAPHIC.COM

AZALEA STATE 26 36 28 121Y AS-COMPLETED	REVISION:	<b>NOTES:</b> 1. ORIGINAL DOCUMENT SIZE: 8.5" X 11" 2. ALL BEARINGS, DISTANCES, AND COORDINATE VALUES CONTAINED HEREIN ARE GRID BASED UPON THE NEW MEXICO STATE PLANE COORDINATE SYSTEM, EAST ZONE, U.S. SURVEY FEET, NORTH AMERICAN DATUM 1983. 3. THIS WELL LOCATION SHOWN HEREON HAS BEEN SURVEYED ON THE GROUND UNDER MY SUPERVISION AND PREPARED ACCORDING TO THE EVIDENCE FOUND AT THE TIME OF SURVEY, AND DATA PROVIDED BY AMEREDEV OPERATING, LLC. THIS CERTIFICATION IS MADE AND LIMITED TO THOSE PERSONS OR ENTITIES SHOWN ON THE FACE OF THIS PLAT AND IS NON-TRANSFERABLE. THIS SURVEY IS CERTIFIED FOR THIS TRANSACTION ONLY.
DATE: 07/17/18		
FILE: AD_AZALEA_STATE_26 36 28_121Y		
DRAWN BY: A.M.D.		
SHEET: 1 OF 1		