

District I
1625 N. French Dr., Hobbs, NM 88240
Phone: (575) 393-6161 Fax: (575) 393-0720
District II
811 S. First St., Artesia, NM 88210
Phone: (575) 748-1283 Fax: (575) 748-1283
District III
1000 Rio Brazos Road, Aztec, NM 87410
Phone: (505) 334-6178 Fax: (505) 334-6178
District IV
1220 S. St. Francis Dr., Santa Fe, NM 87505
Phone: (505) 476-3460 Fax: (505) 476-3460

State of New Mexico

Form C-102

Energy, Minerals & Natural Resources Department

Revised August 1, 2011

OIL CONSERVATION DIVISION

Submit one copy to appropriate
District Office

1220 South St. Francis Dr.

Santa Fe, NM 87505

☐ AMENDED REPORT

WELL LOCATION AND ACREAGE DEDICATION PLAT

¹ API Number 30-025-31685	² Pool Code 52770	³ Pool Name Round Tank; San Andres
⁴ Property Code 322155	⁵ Property Name RAPALA STATE	⁶ Well Number 1
⁷ OGRID No. 13837	⁸ Operator Name MACK ENERGY CORPORATION	⁹ Elevation 4238.9

" Surface Location

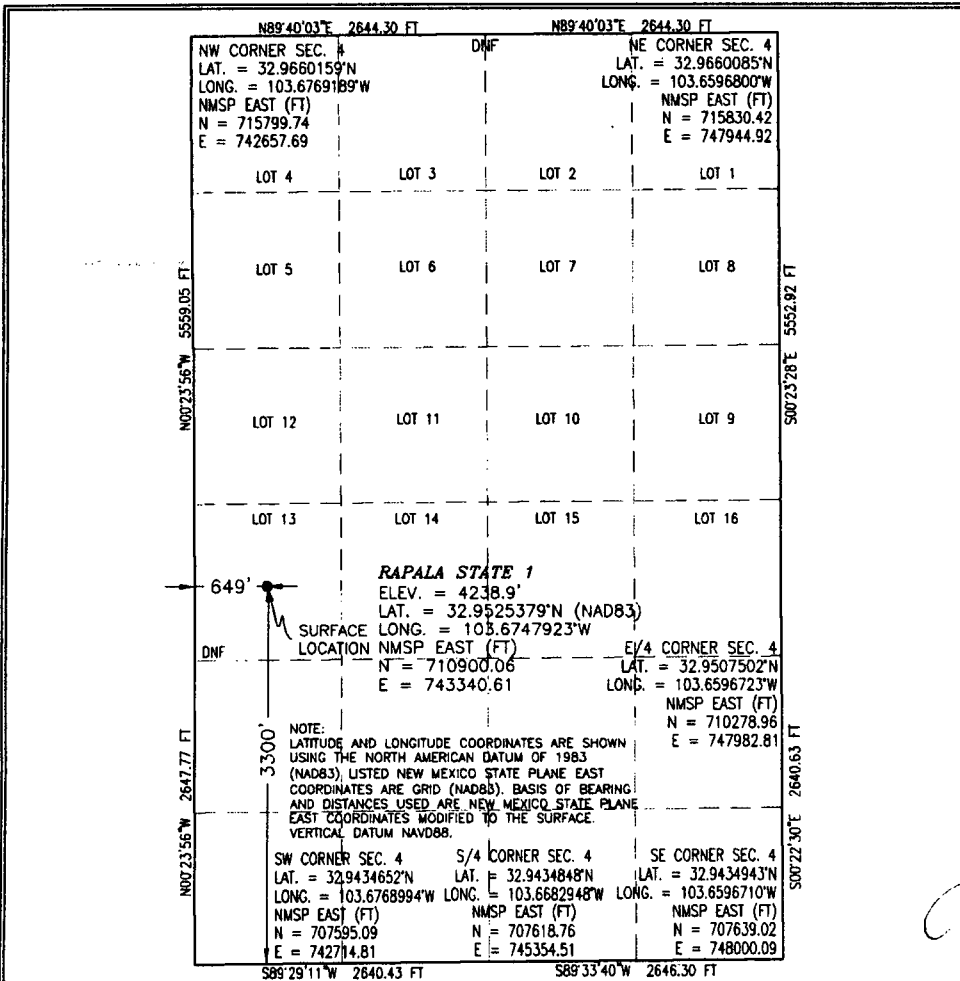
UL or lot no.	Section	Township	Range	Lot Idn	Feet from the	North/South line	Feet from the	East/West line	County
13	4	16 S	33 E		3300	SOUTH	649	WEST	LEA

" Bottom Hole Location If Different From Surface

UL or lot no.	Section	Township	Range	Lot Idn	Feet from the	North/South line	Feet from the	East/ West line	County

¹² Dedicated Acres 40	¹³ Joint or Infill	¹⁴ Consolidation Code	¹⁵ Order No.
-------------------------------------	-------------------------------	----------------------------------	-------------------------

No allowable will be assigned to this completion until all interests have been consolidated or a non-standard unit has been approved by the division.



" OPERATOR CERTIFICATION

I hereby certify that the information contained herein is true and complete to the best of my knowledge and belief, and that this organization either owns a working interest or unleased mineral interest in the land including the proposed bottom hole location or has a right to drill this well at this location pursuant to a contract with an owner of such a mineral or working interest, or to a voluntary pooling agreement or a compulsory pooling order heretofore entered by the division.

Deana Weaver 7.19.18
Signature Date

Deana Weaver

Printed Name

dweaver@mec.com

E-mail Address

" SURVEYOR CERTIFICATION

I hereby certify that the well location shown on this plat was plotted from field notes of actual surveys made by me or under my supervision, and that the same is true and correct to the best of my belief.

JUNE 29, 2018

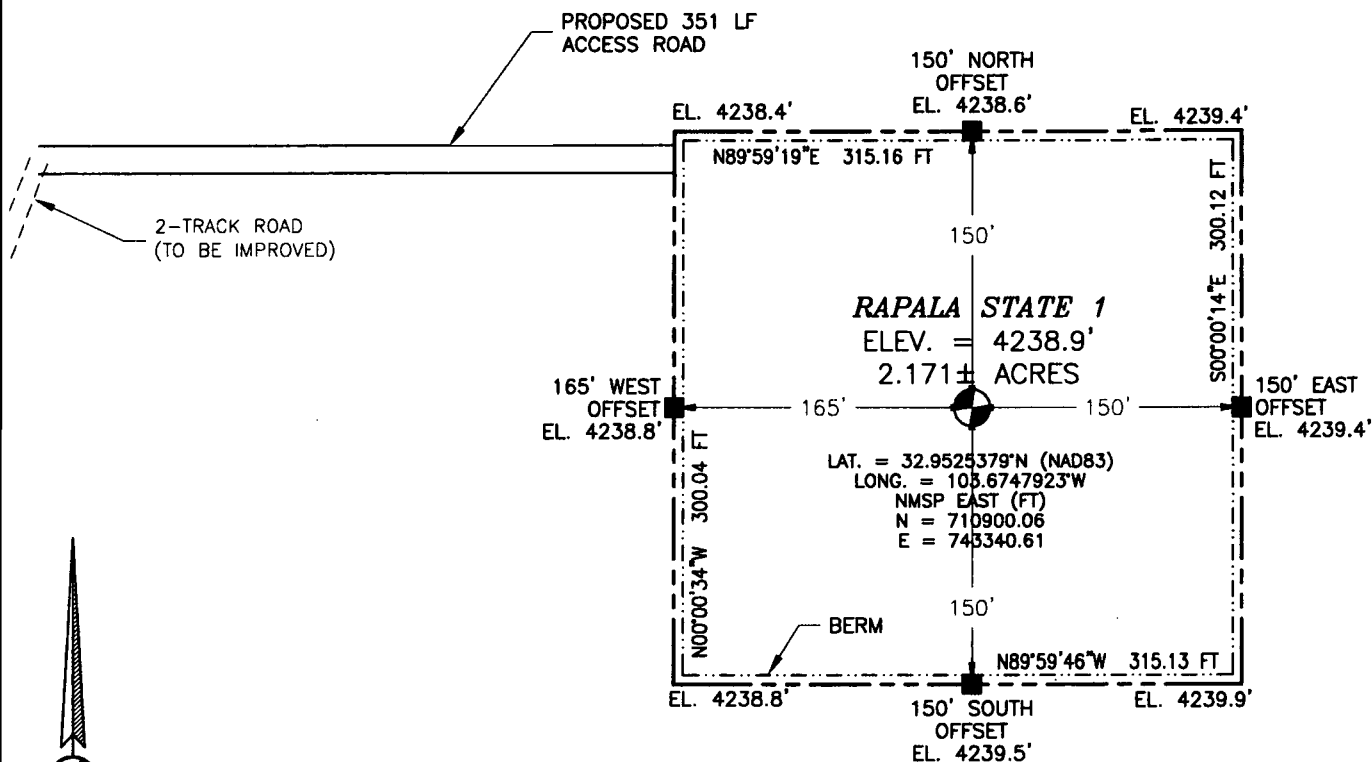
Date of Survey

Signature and Seal of Professional Surveyor
Certificate Number FELIMON F. JARAMILLO, PLS 12797

SURVEY NO. 6351

SECTION 4, TOWNSHIP 16 SOUTH, RANGE 33 EAST, N.M.P.M.
LEA COUNTY, STATE OF NEW MEXICO
SITE MAP

NOTE: LATITUDE AND LONGITUDE COORDINATES ARE SHOWN USING THE NORTH AMERICAN DATUM OF 1983 (NAD83). LISTED NEW MEXICO STATE PLANE EAST COORDINATES ARE GRID (NAD83). BASIS OF BEARING AND DISTANCES USED ARE NEW MEXICO STATE PLANE EAST COORDINATES MODIFIED TO THE SURFACE



010 50 100 200

SCALE 1" = 100'

DIRECTIONS TO LOCATION

FROM THE INTERSECTION OF U.S. HIGHWAY 82 & PATTERSON ROAD, GO NORTH ON PATTERSON ROAD FOR APPROX. 3.8 MILES, GO NORTHEAST ON 2-TRACK ROAD (TO BE IMPROVED) FOR APPROX. 886' TO BEGIN ROAD SURVEY. FOLLOW ROAD SURVEY EAST APPROX. 351' TO THE NORTHWEST PAD CORNER FOR THIS LOCATION.

MACK ENERGY CORPORATION
RAPALA STATE 1
LOCATED 3300 FT. FROM THE SOUTH LINE
AND 649 FT. FROM THE WEST LINE OF
SECTION 4, TOWNSHIP 16 SOUTH,
RANGE 33 EAST, N.M.P.M.
LEA COUNTY, STATE OF NEW MEXICO

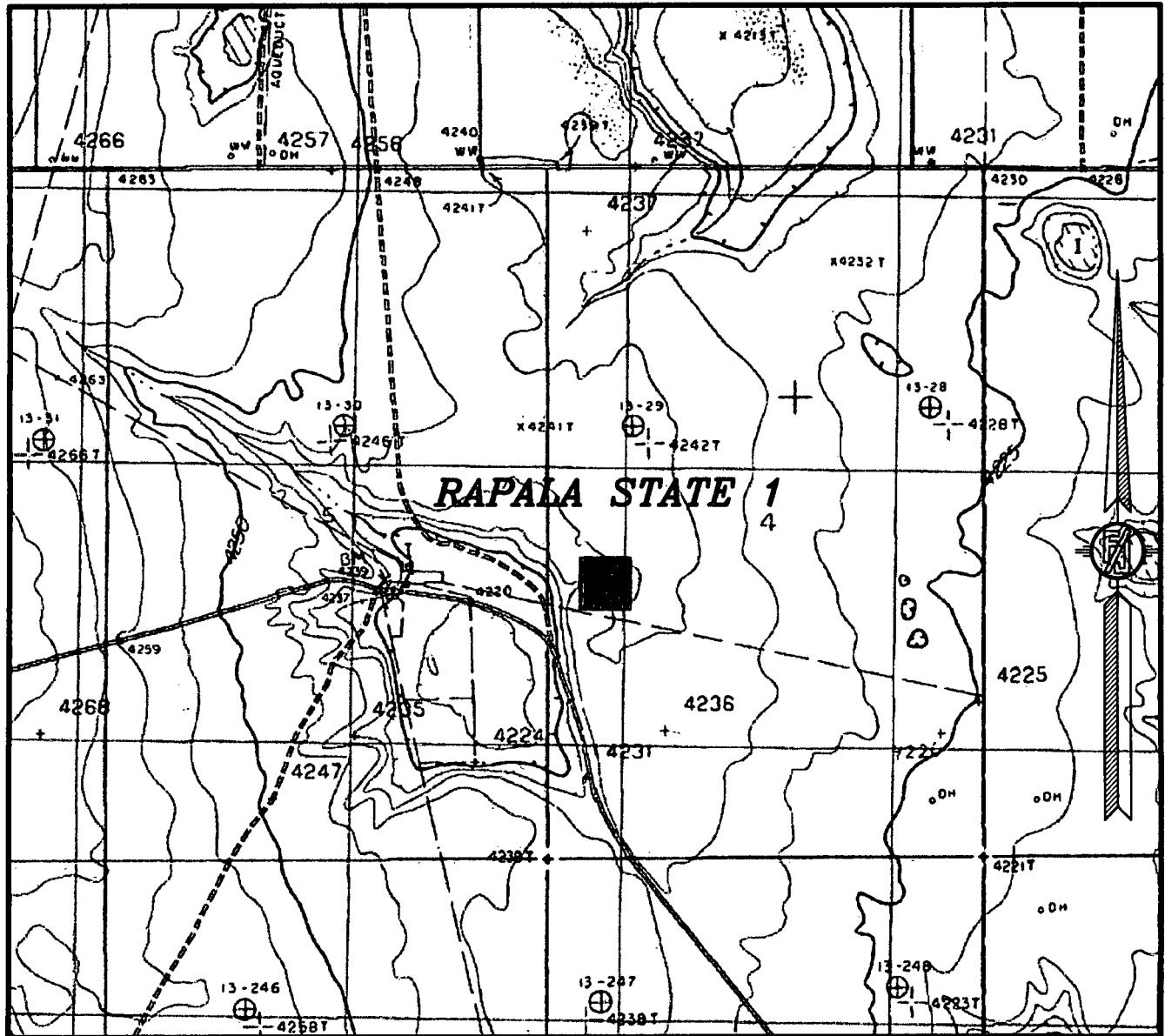
JUNE 29, 2018

SURVEY NO. 6351

MADRON SURVEYING, INC. 301 SOUTH CANAL (575) 234-3341

CARLSBAD, NEW MEXICO

SECTION 4, TOWNSHIP 16 SOUTH, RANGE 33 EAST, N.M.P.M.
LEA COUNTY, STATE OF NEW MEXICO
LOCATION VERIFICATION MAP



USGS QUAD MAP:
BUCKEYE NW

NOT TO SCALE

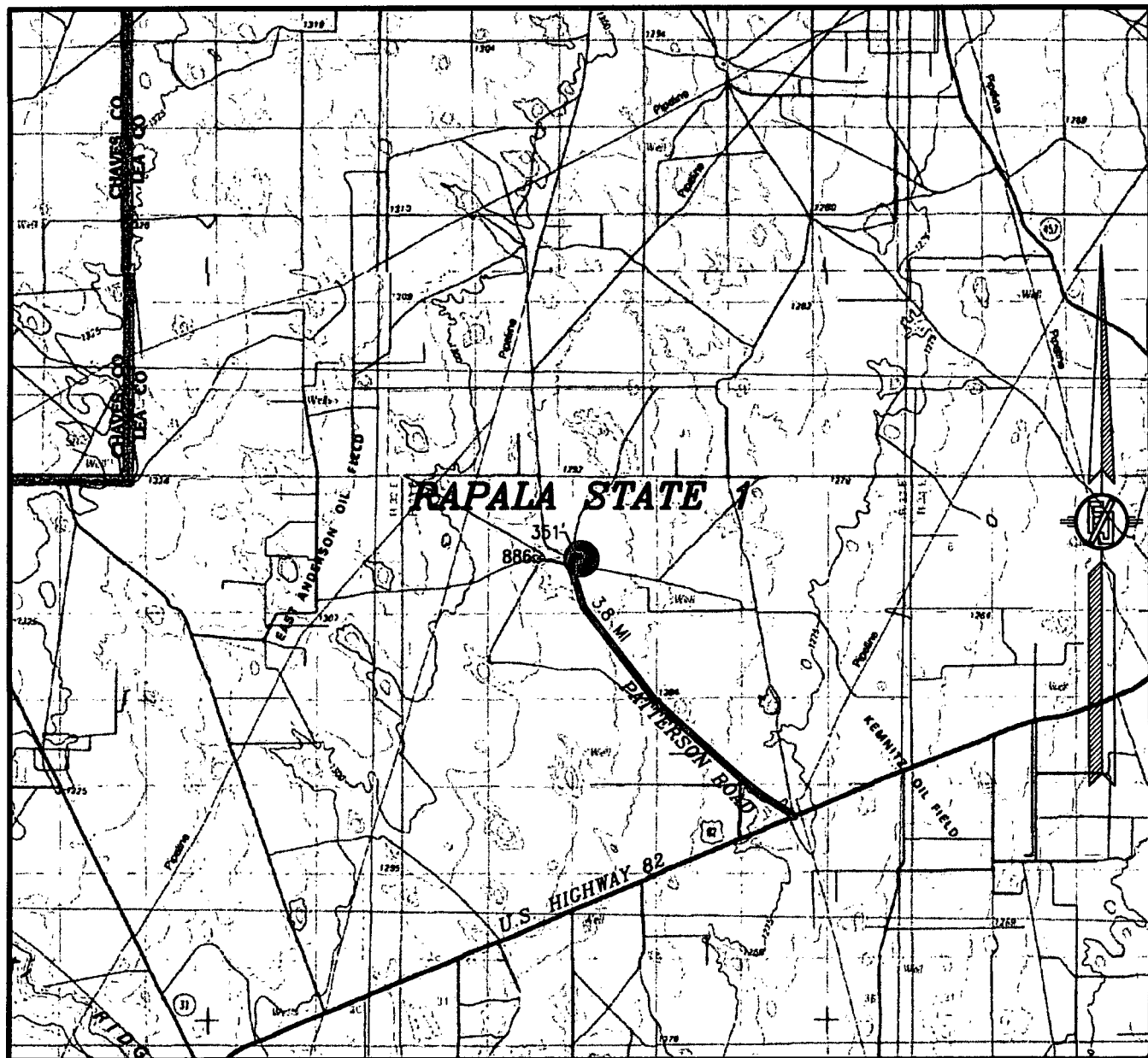
MACK ENERGY CORPORATION
RAPALA STATE 1
LOCATED 3300 FT. FROM THE SOUTH LINE
AND 649 FT. FROM THE WEST LINE OF
SECTION 4, TOWNSHIP 16 SOUTH,
RANGE 33 EAST, N.M.P.M.
LEA COUNTY, STATE OF NEW MEXICO

JUNE 29, 2018

SURVEY NO. 6351

MADRON SURVEYING, INC. 301 SOUTH CANAL (575) 234-3341 CARLSBAD, NEW MEXICO

SECTION 4, TOWNSHIP 16 SOUTH, RANGE 33 EAST, N.M.P.M.
LEA COUNTY, STATE OF NEW MEXICO
VICINITY MAP



DISTANCES IN MILES

NOT TO SCALE

DIRECTIONS TO LOCATION

FROM THE INTERSECTION OF U.S. HIGHWAY 82 & PATTERSON ROAD,
GO NORTH ON PATTERSON ROAD FOR APPROX. 3.8 MILES, GO
NORTHEAST ON 2-TRACK ROAD (TO BE IMPROVED) FOR APPROX.
886' TO BEGIN ROAD SURVEY. FOLLOW ROAD SURVEY EAST APPROX.
351' TO THE NORTHWEST PAD CORNER FOR THIS LOCATION.

**MACK ENERGY CORPORATION
RAPALA STATE 1**

LOCATED 3300 FT. FROM THE SOUTH LINE
AND 649 FT. FROM THE WEST LINE OF
SECTION 4, TOWNSHIP 16 SOUTH,
RANGE 33 EAST, N.M.P.M.
LEA COUNTY, STATE OF NEW MEXICO

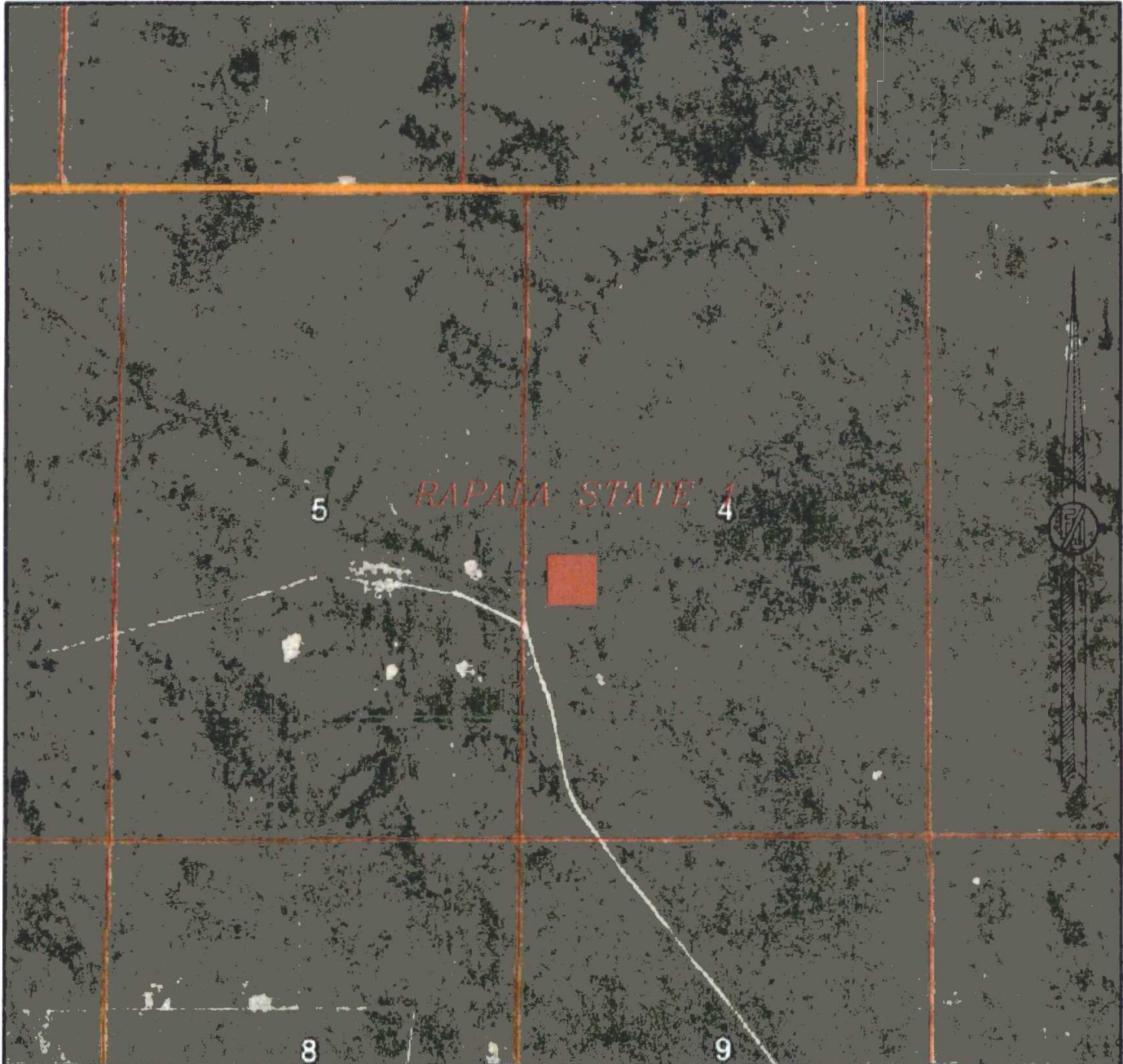
JUNE 29, 2018

SURVEY NO. 6351

MADRON SURVEYING, INC. 301 SOUTH CANAL
(575) 234-3341

CARLSBAD, NEW MEXICO

SECTION 4, TOWNSHIP 16 SOUTH, RANGE 33 EAST, N.M.P.M.
LEA COUNTY, STATE OF NEW MEXICO
AERIAL PHOTO



OT TO SCA33
ERIAL PHOTO:
GOOGLE EARTH
NOVEMBER 2017

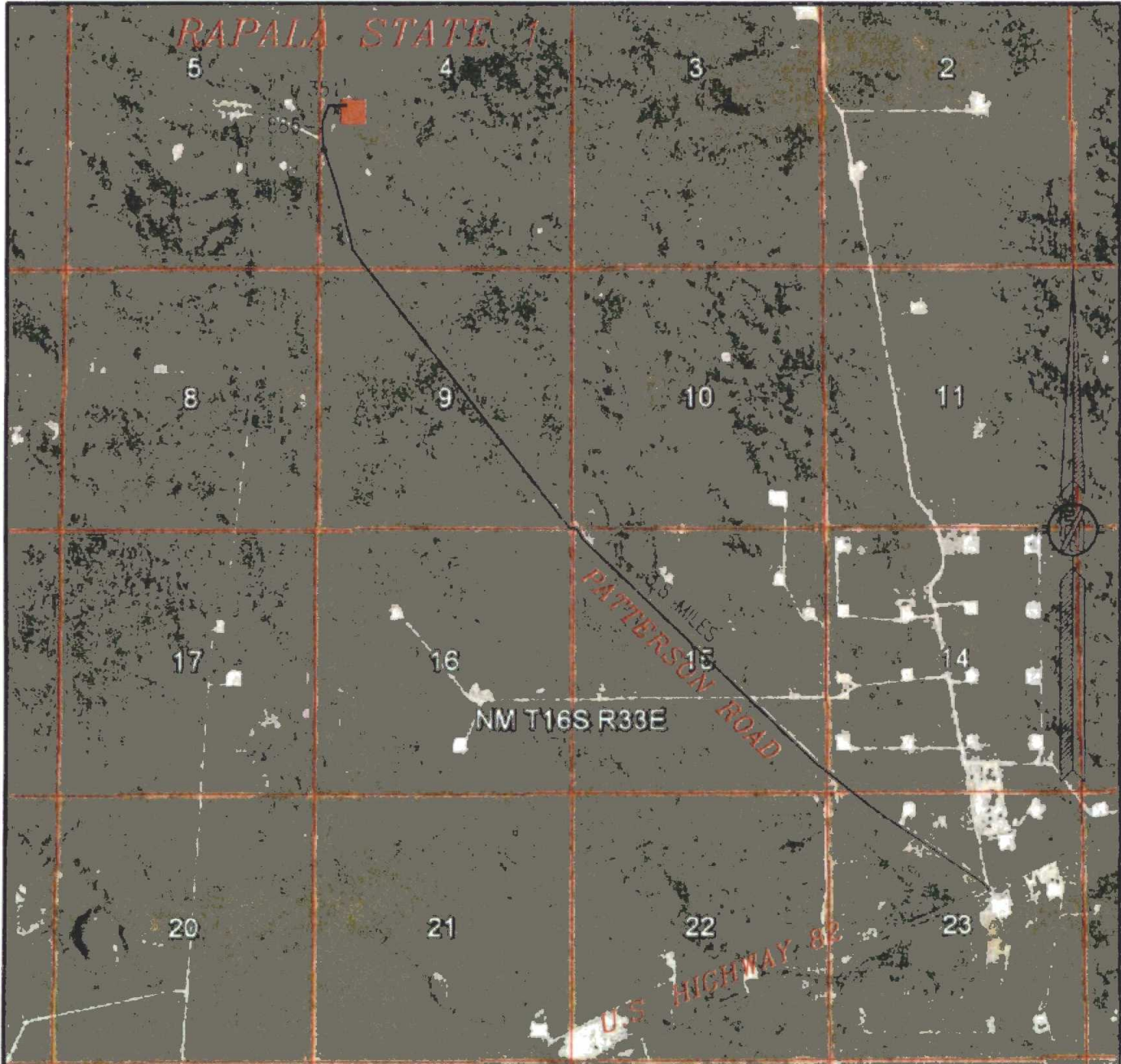
MACK ENERGY CORPORATION
RAPALA STATE 1
LOCATED 3300 FT. FROM THE SOUTH LINE
AND 649 FT. FROM THE WEST LINE OF
SECTION 4, TOWNSHIP 16 SOUTH,
RANGE 33 EAST, N.M.P.M.
LEA COUNTY, STATE OF NEW MEXICO

JUNE 29, 2018

SURVEY NO. 6351

MADRON SURVEYING, INC. 301 SOUTH CANAL (575) 234-3341 CARLSBAD, NEW MEXICO

SECTION 4, TOWNSHIP 16 SOUTH, RANGE 33 EAST, N.M.P.M.
LEA COUNTY, STATE OF NEW MEXICO
ACCESS AERIAL ROUTE MAP



OT TO SCA33
ERIAL PHOTO:
GOOGLE EARTH
NOVEMBER 2017

MACK ENERGY CORPORATION
RAPALA STATE 1
LOCATED 3300 FT. FROM THE SOUTH LINE
AND 649 FT. FROM THE WEST LINE OF
SECTION 4, TOWNSHIP 16 SOUTH,
RANGE 33 EAST, N.M.P.M.
LEA COUNTY, STATE OF NEW MEXICO

JUNE 29, 2018

SURVEY NO. 6351

MADRON SURVEYING, INC. 301 SOUTH CANAL (575) 234-3341 CARLSBAD, NEW MEXICO