

District I  
1625 N. French Dr., Hobbs, NM 88240  
Phone: (575) 393-6161 Fax: (575) 393-0720  
District II  
811 S. First St., Artesia, NM 88210  
Phone: (575) 748-1283 Fax: (575) 748-9720  
District III  
1000 Rio Brazos Road, Aztec, NM 87410  
Phone: (505) 334-6178 Fax: (505) 334-6170  
District IV  
1220 S. St. Francis Dr., Santa Fe, NM 87505  
Phone: (505) 476-3460 Fax: (505) 476-3462

State of New Mexico **HOBBS OCD**  
Energy, Minerals & Natural Resources  
Department  
OIL CONSERVATION DIVISION  
1220 South St. Francis Dr.  
Sante Fe, NM 87505  
JUL 27 2018  
**RECEIVED**

Form C-102  
Revised August 1, 2011  
Submit one copy to appropriate  
District Office

☐ AMENDED REPORT

WELL LOCATION AND ACREAGE DEDICATION PLAT

<sup>1</sup> API Number 30-025-43879	<sup>2</sup> Pool Code 51020	<sup>3</sup> Pool Name RED HILLS; LOWER BONE SPRING
<sup>4</sup> Property Code 318097	<sup>5</sup> Property Name FOX 30 FED COM	<sup>6</sup> Well Number #604H
<sup>7</sup> GRID No. 7377	<sup>8</sup> Operator Name EOG RESOURCES, INC.	<sup>9</sup> Elevation 3322'

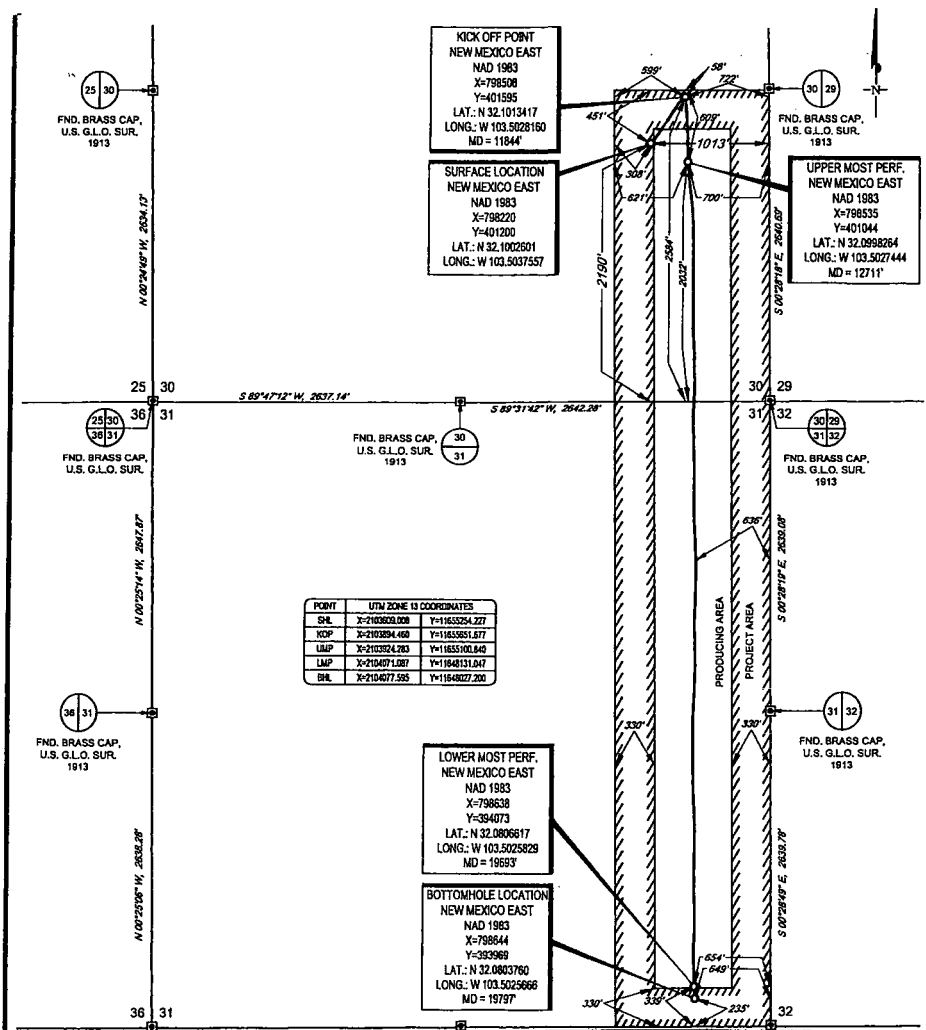
<sup>10</sup>Surface Location

UL or lot no.	Section	Township	Range	Lot Idn	Feet from the	North/South line	Feet from the	East/West line	County
I	30	25-S	34-E	-	2190'	SOUTH	1013'	EAST	LEA

UL or lot no.	Section	Township	Range	Lot Idn	Feet from the	North/South line	Feet from the	East/West line	County
P	31	25-S	34-E	-	235'	SOUTH	649'	EAST	LEA

<sup>12</sup> Dedicated Acres 240.00	<sup>13</sup> Joint or Infill	<sup>14</sup> Consolidation Code	<sup>15</sup> Order No.
---	-------------------------------	----------------------------------	-------------------------

No allowable will be assigned to this completion until all interests have been consolidated or a non-standard unit has been approved by the division.



<sup>17</sup>OPERATOR CERTIFICATION

I hereby certify that the information contained herein is true and complete to the best of my knowledge and belief, and that this organization either owns a working interest or unleased mineral interest in the land including the proposed bottom hole location or has a right to drill this well at this location pursuant to a contract with an owner of such a mineral or working interest, or to a voluntary pooling agreement or a compulsory pooling order heretofore entered by the division.

Signature Kay Maddox Date 7/20/2018

Printed Name KAY MADDUX

E-mail Address \_\_\_\_\_

<sup>18</sup>SURVEYOR CERTIFICATION

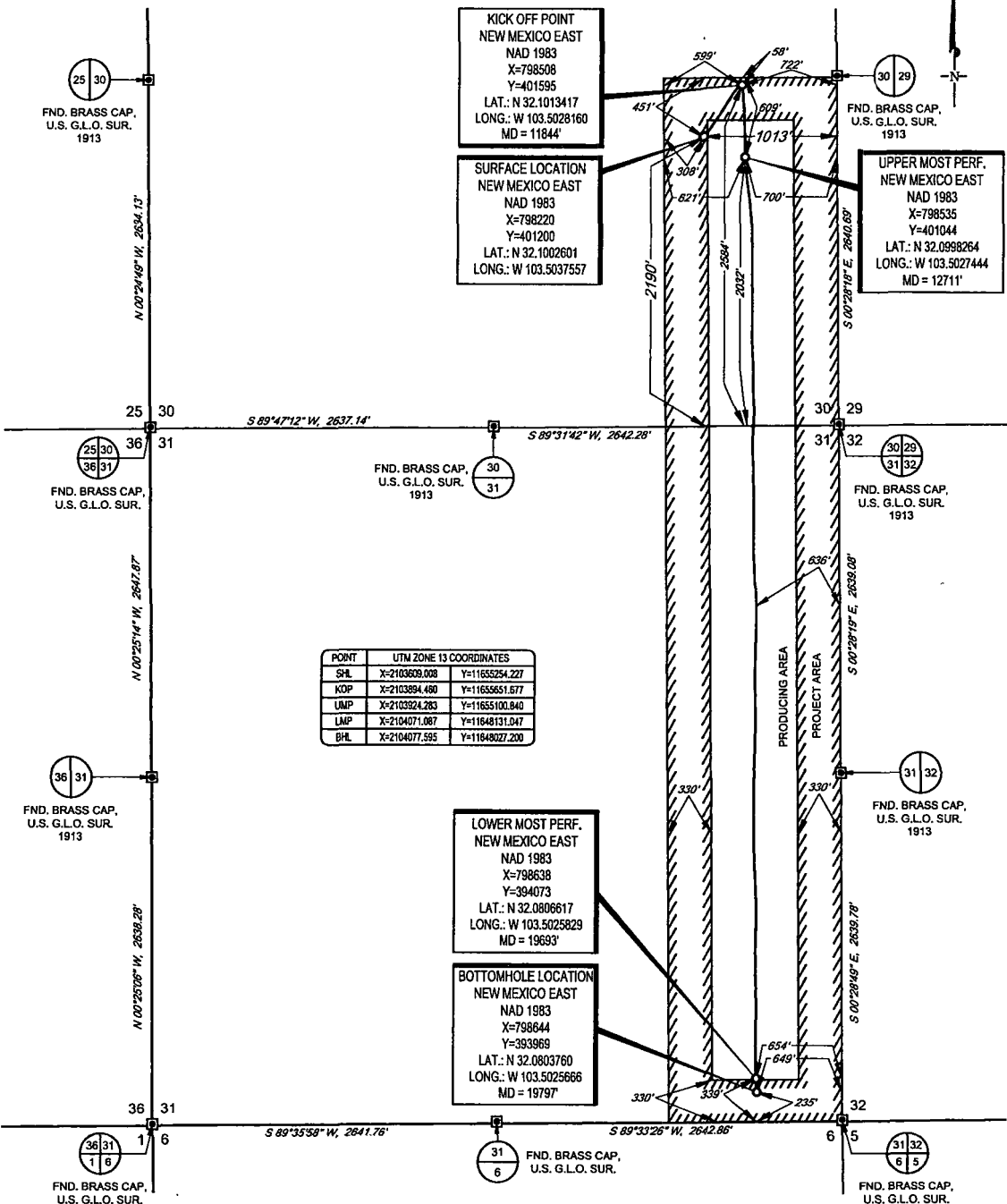
I hereby certify that the well location shown on this plat was plotted from field notes of actual surveys made by me or under my supervision, and that the same is true to the best of my belief.

Date of Survey 12/28/2016  
Signature and Title MICHAEL BROWN  
Professional Surveyor  
New Mexico  
18329

Certificate Number \_\_\_\_\_

SCALE: 1" = 1000'  
0' 500' 1000'

SECTIONS 30 & 31, TOWNSHIP 25-S, RANGE 34-E, N.M.P.M.  
LEA COUNTY, NEW MEXICO



POINT	UTM ZONE 13 COORDINATES
SHL	X=2103609.008 Y=11655254.227
KOP	X=2103894.480 Y=11655651.577
UMP	X=2103924.283 Y=11655100.840
LMP	X=2104071.087 Y=11648131.047
BHL	X=2104077.595 Y=11648027.200

LEASE NAME & WELL NO.: FOX 30 FED COM #604H  
 SECTION 30 TWP 25-S RGE 34-E SURVEY N.M.P.M.  
 COUNTY LEA STATE NM ELEVATION 3322'  
 DESCRIPTION 2190' FSL & 1013' FEL

**TOPOGRAPHIC**  
LOYALTY INNOVATION LEGACY  
1400 EVERMAN PARKWAY, Ste. 148 • FT. WORTH, TEXAS 76140  
TELEPHONE: (817) 744-7512 • FAX: (817) 744-7554  
TEXAS FIRM REGISTRATION NO. 10042504  
WWW.TOPOGRAPHIC.COM

**MICHAEL B. BROWN**  
NEW MEXICO  
18329  
PROFESSIONAL SURVEYOR

Michael Blake Brown, P.S. No. 18329  
JULY 16, 2018

**eg resources, Inc.**

FOX 30 FED COM #604H AS-COMPLETED	REVISION:	
	INT	DATE
DATE: 07/16/18		
FILE: AD_FOX_30_FED_COM_604H		
DRAWN BY: MML		
SHEET: 1 OF 1		

NOTES:  
 1. ORIGINAL DOCUMENT SIZE: 8.5" X 14"  
 2. ALL BEARINGS, DISTANCES, AND COORDINATE VALUES CONTAINED HEREIN ARE GRID BASED UPON THE NEW MEXICO COORDINATE SYSTEM, EAST ZONE, U.S. SURVEY FEET, NORTH AMERICAN DATUM 1983.  
 3. THIS WELL LOCATION SHOWN HEREON HAS BEEN SURVEYED ON THE GROUND UNDER MY SUPERVISION AND PREPARED ACCORDING TO THE EVIDENCE FOUND AT THE TIME OF SURVEY, AND DATA PROVIDED BY EOG RESOURCES, INC. THIS CERTIFICATION IS MADE AND LIMITED TO THOSE PERSONS OR ENTITIES SHOWN ON THE FACE OF THIS PLAT AND IS NON-TRANSFERABLE. THIS SURVEY IS CERTIFIED FOR THIS TRANSACTION ONLY.