

District I
1625 N. French Dr., Hobbs, NM 88240
Phone: (575) 393-6161 Fax: (575) 393-0720
District II
811 E. First St., Artesia, NM 88210
Phone: (575) 748-1283 Fax: (575) 748-9720
District III
1000 Rio Brazos Road, Aztec, NM 87410
Phone: (505) 334-6178 Fax: (505) 334-6170
District IV
1220 S. St. Francis Dr., Santa Fe, NM 87505
Phone: (505) 476-3460 Fax: (505) 476-3462

State of New Mexico
Energy, Minerals & Natural Resources
Department
OIL CONSERVATION DIVISION
1220 South St. Francis Dr.
Santa Fe, NM 87505

FORM C-10

Revised August 1, 201

Submit one copy to appropriate

District Office

☐ AMENDED REPORT

WELL LOCATION AND ACREAGE DEDICATION PLAT

¹ API Number 30-025- 44558	² Pool Code 98094	³ Pool Name BOBCAT DRAW, UPPER WOLFCAMP
⁴ Property Code 318097	⁵ Property Name FOX 30 FED COM	⁶ Well Number #706H
⁷ GRID No. 7377	⁸ Operator Name EOG RESOURCES, INC.	⁹ Elevation 3322'

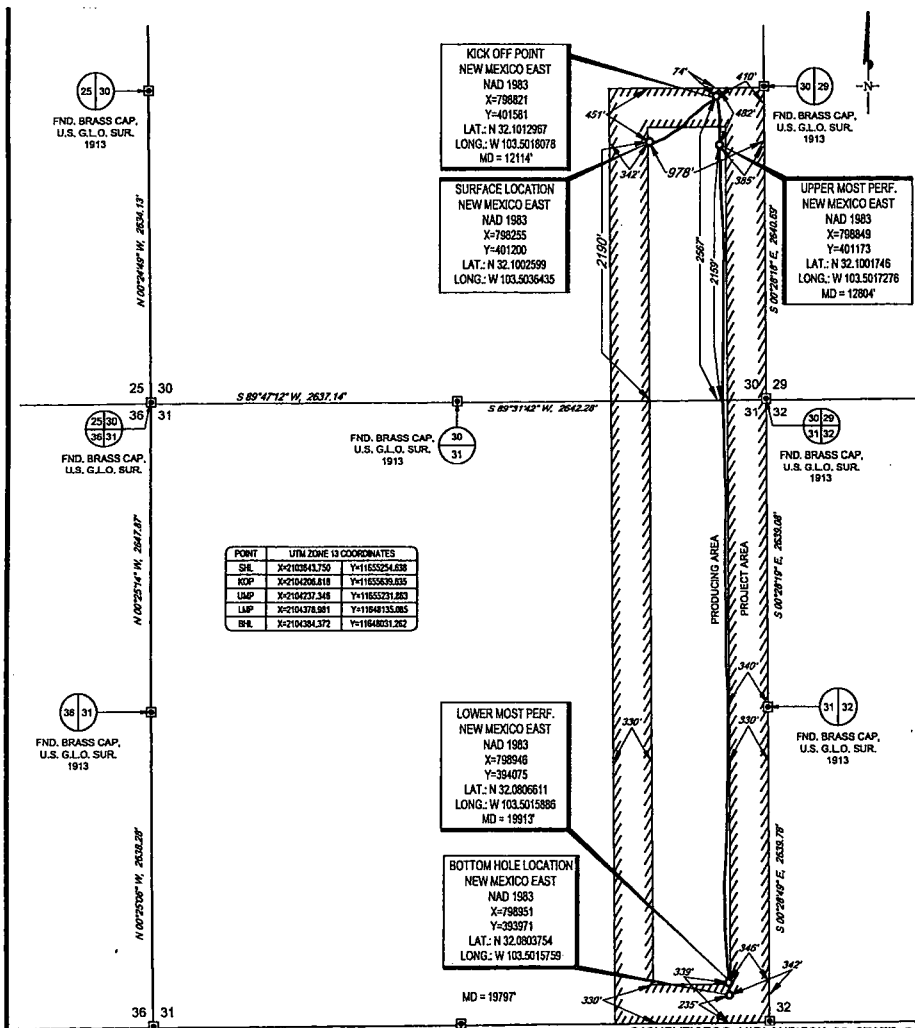
¹⁰Surface Location

UL or lot no. I	Section 30	Township 25-S	Range 34-E	Lot Idn -	Feet from the 2190'	North/South line SOUTH	Feet from the 978'	East/West line EAST	County LEA
--------------------	---------------	------------------	---------------	--------------	------------------------	---------------------------	-----------------------	------------------------	---------------

UL or lot no. P	Section 31	Township 25-S	Range 34-E	Lot Idn -	Feet from the 235'	North/South line SOUTH	Feet from the 342'	East/West line EAST	County LEA
--------------------	---------------	------------------	---------------	--------------	-----------------------	---------------------------	-----------------------	------------------------	---------------

¹² Dedicated Acres 240.00	¹³ Joint or Infill	¹⁴ Consolidation Code	¹⁵ Order No.
-----------------------------------------	-------------------------------	----------------------------------	-------------------------

No allowable will be assigned to this completion until all interests have been consolidated or a non-standard unit has been approved by the division.



¹⁷OPERATOR CERTIFICATION

I hereby certify that the information contained herein is true and complete to the best of my knowledge and belief, and that this organization either owns a working interest or unleased mineral interest in the land including the proposed bottom hole location or has a right to drill this well at this location pursuant to a contract with an owner of such a mineral or working interest, or to a voluntary pooling agreement or a compulsory pooling order heretofore entered by the division.

Kay Maddox

Date

KAY MADDOX

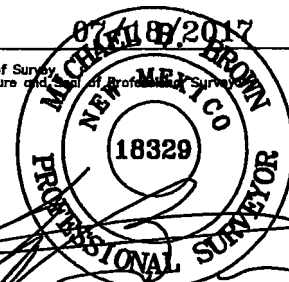
Printed Name

E-mail Address

¹⁸SURVEYOR CERTIFICATION

I hereby certify that the well location shown on this plat was plotted from field notes of actual surveys made by me or under my supervision, and that the same is true to the best of my belief.

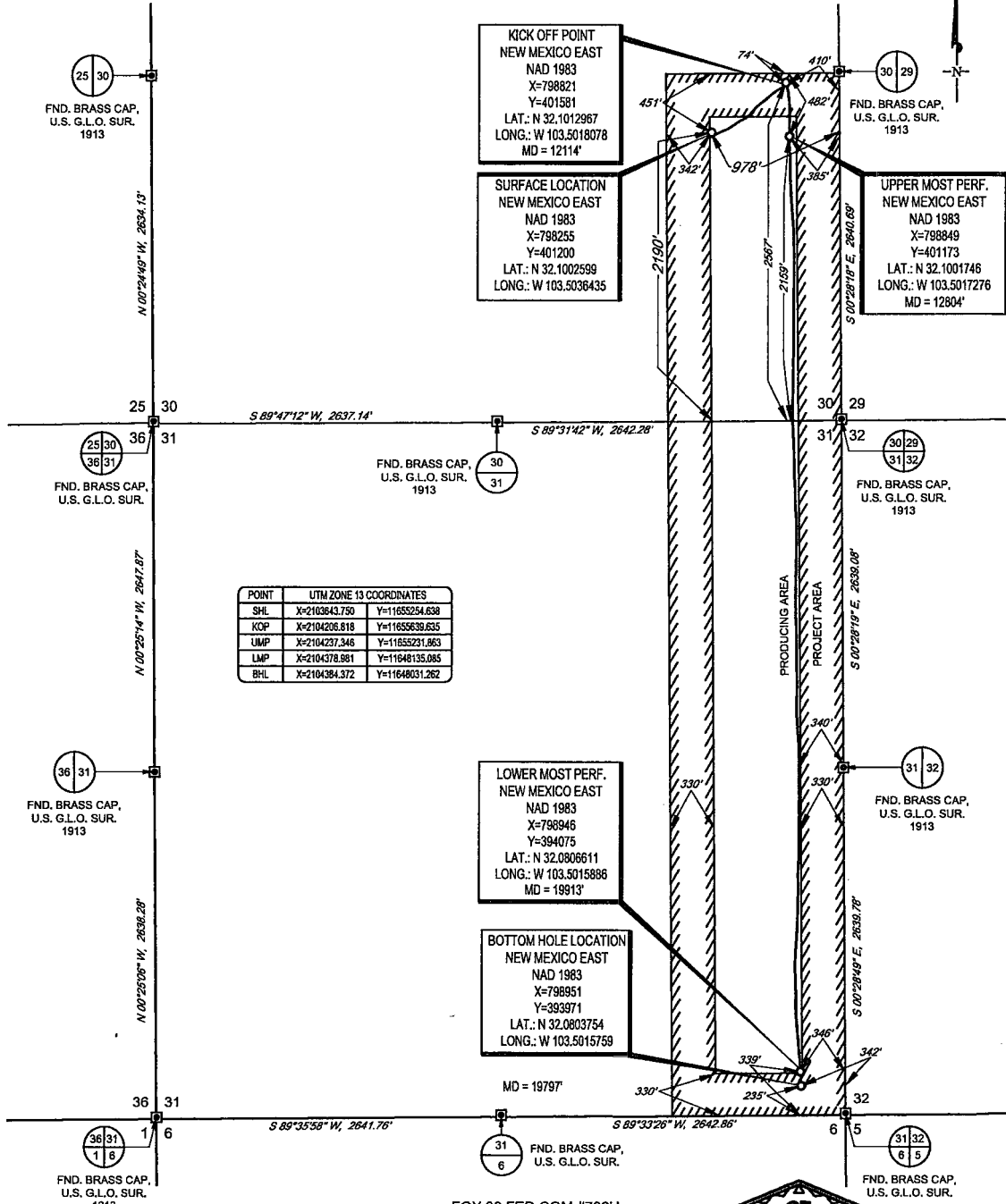
Date of Survey
Signature and Seal of Professional Surveyor



Certificate Number

SCALE: 1" = 1000'
0' 500' 1000'

SECTIONS 30 & 31, TOWNSHIP 25-S, RANGE 34-E, N.M.P.M.
LEA COUNTY, NEW MEXICO



LEASE NAME & WELL NO.: FOX 30 FED COM #706H
SECTION 30 TWP 25-S RGE 34-E SURVEY N.M.P.M.
COUNTY LEA STATE NM ELEVATION 3324'
DESCRIPTION 2190' FSL & 978' FEL



TOPOGRAPHIC
LOYALTY INNOVATION LEGACY
1400 EVERMAN PARKWAY, Ste. 146 • FT. WORTH, TEXAS 76140
TELEPHONE: (817) 744-7512 • FAX (817) 744-7554
TEXAS FIRM REGISTRATION NO. 10042504
WWW.TOPOGRAPHIC.COM

EOG resources, Inc.

Michael Blake Brown, P.S. No. 18329
JULY 17, 2018

FOX 30 FED COM #706H AS-COMPLETED	REVISION:	
	INT	DATE
DATE: 07/17/18		
FILE: AD_FOX_30_FED_COM_706H		
DRAWN BY: JLS		
SHEET: 1 OF 1		

NOTES:
1. ORIGINAL DOCUMENT SIZE: 8.5" X 14"
2. ALL BEARINGS, DISTANCES, AND COORDINATE VALUES CONTAINED HEREIN ARE GRID BASED UPON THE NEW MEXICO COORDINATE SYSTEM, EAST ZONE, U.S. SURVEY FEET, NORTH AMERICAN DATUM 1983.
3. THIS WELL LOCATION SHOWN HEREON HAS BEEN SURVEYED ON THE GROUND UNDER MY SUPERVISION AND PREPARED ACCORDING TO THE EVIDENCE FOUND AT THE TIME OF SURVEY, AND DATA PROVIDED BY EOG RESOURCES, INC. THIS CERTIFICATION IS MADE AND LIMITED TO THOSE PERSONS OR ENTITIES SHOWN ON THE FACE OF THIS PLAT AND IS NON-TRANSFERABLE. THIS SURVEY IS CERTIFIED FOR THIS TRANSACTION ONLY.