

UNITED STATES  
DEPARTMENT OF THE INTERIOR  
BUREAU OF LAND MANAGEMENTHOBBS OCD  
OCD 11053  
AUG 06 2018  
RECEIVEDFORM APPROVED  
OMB No. 1004-0137  
Expires: July 31, 2010

## WELL COMPLETION OR RECOMPLETION REPORT AND LOG

5. Lease Serial No.  
NMNM0392082A

6. If Indian, Allottee or Tribe Name

7. Unit or CA Agreement Name and No.

1a. Type of Well ☒ Oil Well ☐ Gas Well ☐ Dry ☐ Other  
b. Type of Completion ☒ New Well ☐ Work Over ☐ Deepen ☐ Plug Back ☐ Diff. Resvr.  
Other2. Name of Operator  
CIMAREX ENERGY COMPANY OF OK  
Contact: FATIMA VASQUEZ  
Email: fvasquez@cimarex.com8. Lease Name and Well No.  
HALLERTAU 5 FEDERAL 16H3. Address 202 S CHEYENNE AVE. SUITE 1000  
TULSA, OK 741033a. Phone No. (include area code)  
Ph: 432-620-19339. API Well No.  
30-025-43887-00-S1

4. Location of Well (Report location clearly and in accordance with Federal requirements)\*

At surface SWSW 490FSL 378FWL 32.066250 N Lat, 103.704605 W Lon

At top prod interval reported below SWSW 502FSL 378FWL 32.066284 N Lat, 103.704605 W Lon

At total depth NWNW 330FNL 387FWL 32.078671 N Lat, 103.704659 W Lon

10. Field and Pool, or Exploratory  
WOLFCAMP11. Sec., T., R., M., or Block and Survey  
or Area Sec 5 T26S R32E Mer NMP12. County or Parish  
LEA13. State  
NM14. Date Spudded  
11/03/201715. Date T.D. Reached  
11/28/201716. Date Completed  
☐ D & A ☒ Ready to Prod.  
04/03/201817. Elevations (DF, KB, RT, GL)\*  
3272 GL18. Total Depth: MD  
TVD 16529  
1204819. Plug Back T.D.: MD  
TVD 16514  
1204820. Depth Bridge Plug Set: MD  
TVD21. Type Electric & Other Mechanical Logs Run (Submit copy of each)  
RBL CNL22. Was well cored? ☒ No ☐ Yes (Submit analysis)  
Was DST run? ☒ No ☐ Yes (Submit analysis)  
Directional Survey? ☐ No ☒ Yes (Submit analysis)

## 23. Casing and Liner Record (Report all strings set in well)

Hole Size	Size/Grade	Wt. (#/ft.)	Top (MD)	Bottom (MD)	Stage Cementer Depth	No. of Sk. & Type of Cement	Slurry Vol. (BBL)	Cement Top*	Amount Pulled
14.750	10.750 J-55	45.5	0	1090		870		0	0
6.750	5.500 HCP-110	23.0	0	11464		620		6700	0
9.875	7.625 L-80	29.7	0	12187		2340		0	0
6.750	5.000 HCP-110	18.0	11464	16529					

## 24. Tubing Record

Size	Depth Set (MD)	Packer Depth (MD)	Size	Depth Set (MD)	Packer Depth (MD)	Size	Depth Set (MD)	Packer Depth (MD)
2.875	11464	11464						

## 25. Producing Intervals

## 26. Perforation Record

Formation	Top	Bottom	Perforated Interval	Size	No. Holes	Perf. Status
A) WOLFCAMP	11695		12316 TO 16489	0.000	700	OPEN
B)						
C)						
D)						

## 27. Acid, Fracture, Treatment, Cement Squeeze, Etc.

Depth Interval	Amount and Type of Material
12316 TO 16489	197,044 GALS OF TOTAL FLUID & 9,903.616# SAND

## 28. Production - Interval A

Date First Produced	Test Date	Hours Tested	Test Production	Oil BBL	Gas MCF	Water BBL	Oil Gravity Corr. API	Gas Gravity	Production Method
04/03/2018	04/17/2018	24	→	596.0	1696.0	1217.0	49.4		GAS LIFT
Choke Size	Tbg. Press. Flwg. SI	Csg. Press.	24 Hr. Rate	Oil BBL	Gas MCF	Water BBL	Gas:Oil Ratio	Well Status	
18	3800	2600.0	→	596	1696	1217	2846	POW	

## 28a. Production - Interval B

Date First Produced	Test Date	Hours Tested	Test Production	Oil BBL	Gas MCF	Water BBL	Oil Gravity Corr. API	Gas Gravity	Production Method
			→						
Choke Size	Tbg. Press. Flwg. SI	Csg. Press.	24 Hr. Rate	Oil BBL	Gas MCF	Water BBL	Gas:Oil Ratio	Well Status	
			→						

ACCEPTED FOR RECORD

JUL 28 2018

BUREAU OF LAND MANAGEMENT  
CLOSING OFFICE(See Instructions and spaces for additional data on reverse side)  
ELECTRONIC SUBMISSION #420708 VERIFIED BY THE BLM WELL INFORMATION SYSTEM

\*\* BLM REVISED \*\* BLM REVISED \*\* BLM REVISED \*\* BLM REVISED \*\* BLM REVISED \*\*

Reclamation Due: 10/3/2018

28b. Production - Interval C									
Date First Produced	Test Date	Hours Tested	Test Production →	Oil BBL	Gas MCF	Water BBL	Oil Gravity Corr. API	Gas Gravity	Production Method
Choke Size	Tbg. Press. Flwg. SI	Csg. Press.	24 Hr. Rate →	Oil BBL	Gas MCF	Water BBL	Gas:Oil Ratio	Well Status	

28c. Production - Interval D									
Date First Produced	Test Date	Hours Tested	Test Production →	Oil BBL	Gas MCF	Water BBL	Oil Gravity Corr. API	Gas Gravity	Production Method
Choke Size	Tbg. Press. Flwg. SI	Csg. Press.	24 Hr. Rate →	Oil BBL	Gas MCF	Water BBL	Gas:Oil Ratio	Well Status	

29. Disposition of Gas(Sold, used for fuel, vented, etc.)  
**SOLD**

30. Summary of Porous Zones (Include Aquifers):

Show all important zones of porosity and contents thereof: Cored intervals and all drill-stem tests, including depth interval tested, cushion used, time tool open, flowing and shut-in pressures and recoveries.

31. Formation (Log) Markers

Formation	Top	Bottom	Descriptions, Contents, etc.	Name	Top
					Meas. Depth
BELL CANYON	4455	5411	OIL, GAS	RUSTLER	1019
CHERRY CANYON	5411	6730	OIL, GAS	TOP OF SALT	1345
BRUSHY CANYON	6730	8451	OIL, GAS	BELL CANYON	4455
BONE SPRING	8451	11695	OIL, GAS	CHERRY CANYON	5411
WOLFCAMP	11695		OIL, GAS	BRUSHY CANYON	6730
				BONE SPRING	8451
				WOLFCAMP	11695

32. Additional remarks (include plugging procedure):

33. Circle enclosed attachments:

- |   |                    |               |                       |
|---|--------------------|---------------|-----------------------|
| 1. Electrical/Mechanical Logs (1 full set req'd.)     | 2. Geologic Report | 3. DST Report | 4. Directional Survey |
| 5. Sundry Notice for plugging and cement verification | 6. Core Analysis   | 7 Other:      |                       |

34. I hereby certify that the foregoing and attached information is complete and correct as determined from all available records (see attached instructions):

**Electronic Submission #420708 Verified by the BLM Well Information System.**  
**For CIMAREX ENERGY COMPANY OF CO, sent to the Hobbs**  
**Committed to AFMSS for processing by DUNCAN WHITLOCK on 05/25/2018 (18DW0185SE)**

Name (please print) FATIMA VASQUEZ

Title REGULATORY ANALYST

Signature (Electronic Submission)

Date 05/18/2018

Title 18 U.S.C. Section 1001 and Title 43 U.S.C. Section 1212, make it a crime for any person knowingly and willfully to make to any department or agency of the United States any false, fictitious or fraudulent statements or representations as to any matter within its jurisdiction.

**\*\* REVISED \*\* REVISED \*\* REVISED \*\* REVISED \*\* REVISED \*\* REVISED \*\* REVISED \*\***

District I  
1625 N. French Dr., Hobbs, NM 88240  
Phone: (575) 393-6161 Fax: (575) 393-0720  
District II  
811 S. First St., Artesia, NM 88210  
Phone: (575) 748-1283 Fax: (575) 748-9720  
District III  
1000 Rio Brazos Road, Aztec, NM 87410  
Phone: (505) 334-6178 Fax: (505) 334-6170  
District IV  
1220 S. St. Francis Dr., Santa Fe, NM 87505  
Phone: (505) 476-3460 Fax: (505) 476-3462

State of New Mexico  
Energy, Minerals & Natural Resources Department  
OIL CONSERVATION DIVISION  
1220 South St. Francis Dr.  
Santa Fe, NM 87505

**HOBBS OCD**  
**AUG 06 2018**  
**RECEIVED**

Form C-102  
Revised August 1, 2011  
Submit one copy to appropriate  
District Office

AMENDED REPORT

WELL LOCATION AND ACREAGE DEDICATION PLAT

<sup>1</sup> API Number 30-025-43887	<sup>2</sup> Pool Code 98065	<sup>3</sup> Pool Name WC-025 G-08 S203205N; Upper WC
<sup>4</sup> Property Code 38778	<sup>5</sup> Property Name HALLERTAU 5 FEDERAL	<sup>6</sup> Well Number 16H
<sup>7</sup> OGRID No. 162683	<sup>8</sup> Operator Name CIMAREX ENERGY CO. OF COLORADO	<sup>9</sup> Elevation 3271.9'

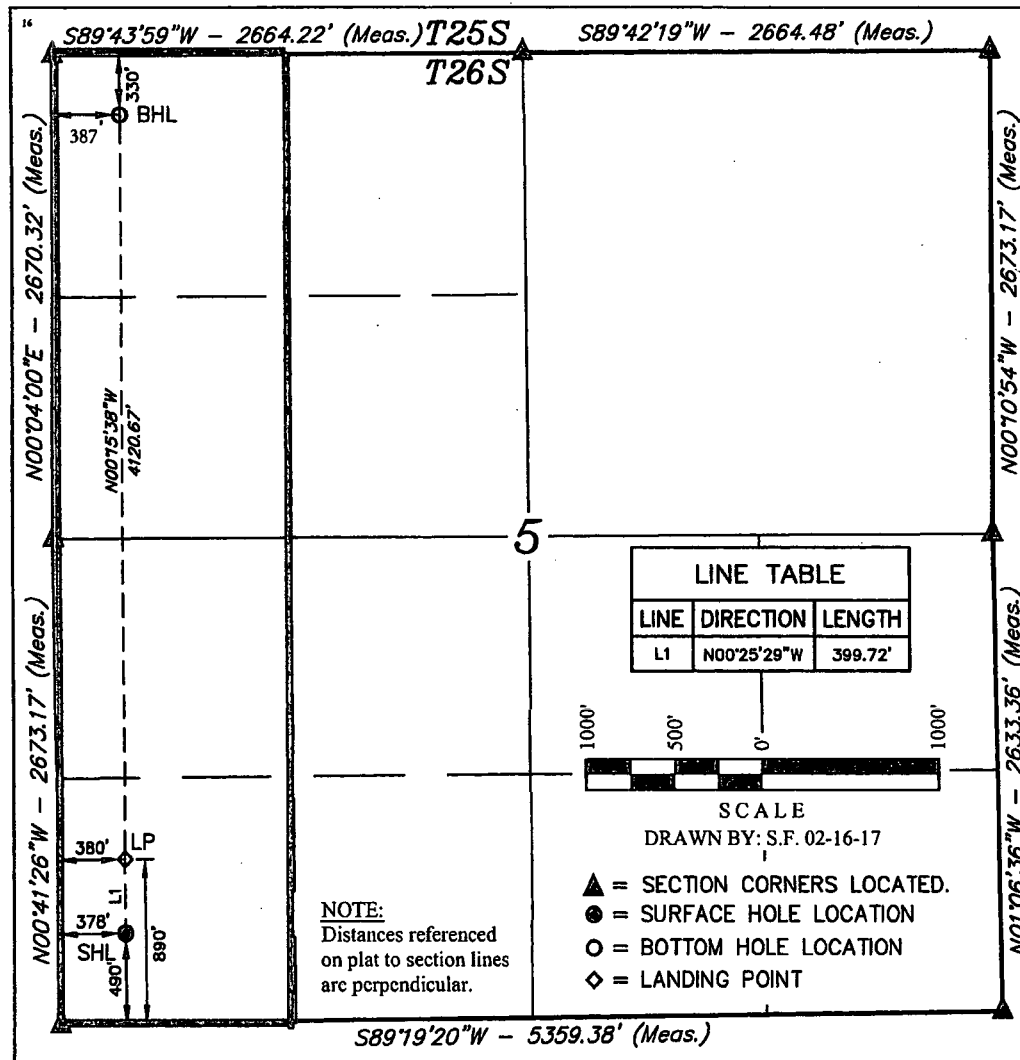
"Surface Location

UL or lot no.	Section	Township	Range	Lot Idn	Feet from the	North/South line	Feet from the	East/West line	County
M	5	26S	32E		490	SOUTH	378	WEST	LEA

"Bottom Hole Location If Different From Surface

UL or lot no.	Section	Township	Range	Lot Idn	Feet from the	North/South line	Feet from the	East/West line	County
D	5	26S	32E		330	NORTH	387	WEST	LEA
<sup>12</sup> Dedicated Acres 160		<sup>13</sup> Joint or Infill		<sup>14</sup> Consolidation Code		<sup>15</sup> Order No.			

No allowable will be assigned to this completion until all interests have been consolidated or a non-standard unit has been approved by the division.



"OPERATOR CERTIFICATION

I hereby certify that the information contained herein is true and complete to the best of my knowledge and belief, and that this organization either owns a working interest or unleased mineral interest in the land including the proposed bottom hole location or has a right to drill this well at this location pursuant to a contract with an owner of such a mineral or working interest, or to a voluntary pooling agreement or a compulsory pooling order heretofore entered by the division.

Signature: *Patricia Holland* Date: 4/17/18

Printed Name: Patricia Holland

E-mail Address: pholland@cimarex.com

"SURVEYOR CERTIFICATION

I hereby certify that the well location shown on this plat was plotted from field notes of actual surveys made by me or under my supervision, and that the same is true and correct to the best of my belief.

February 12, 2017

Date of Survey

Signature and Seal of Professional Surveyor:



Certificate Number: