

DISTRICT I
1825 N. FRANCHIS DR., HOBBS, NM 88240
Phone: (505) 383-8181 Fax: (505) 383-0720

DISTRICT II
511 S. FIRST ST., ARTESIA, NM 88210
Phone: (505) 748-1883 Fax: (505) 748-0720

DISTRICT III
1000 RIO BRAZOS RD., AZTEC, NM 87410
Phone: (505) 334-8178 Fax: (505) 334-8170

DISTRICT IV
1825 S. ST. FRANCIS DR., SANTA FE, NM 87505
Phone: (505) 478-3460 Fax: (505) 478-3462

State of New Mexico
Energy, Minerals & Natural Resources Department
OIL CONSERVATION DIVISION
1220 SOUTH ST. FRANCIS DR.
Santa Fe, New Mexico 87505

HOBBS OCD
AUG 08 2018
RECEIVED

Form C-102
Revised August 1, 2011
Submit one copy to appropriate
District Office

☐ AMENDED REPORT

WELL LOCATION AND ACREAGE DEDICATION PLAT

API Number 30-025-45057	Pool Code 28070	Pool Name Wildcat; Bone Spring
Property Code 322226	Property Name BONAI FEDERAL COM	Well Number 15H
OGRID No. 229137	Operator Name COG OPERATING, LLC	Elevation 3376.5'

Surface Location

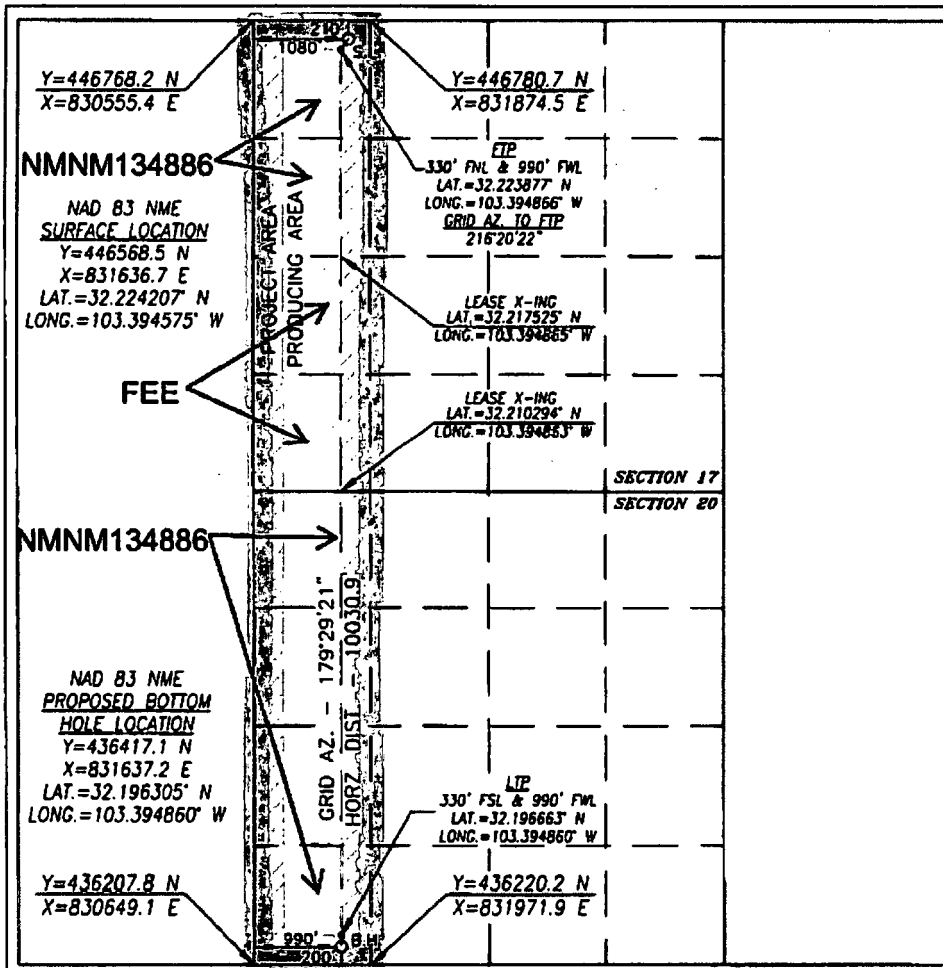
UL or lot No.	Section	Township	Range	Lot Idn	Feet from the	North/South line	Feet from the	East/West line	County
D	17	24-S	35-E		210	NORTH	1080	WEST	LEA

Bottom Hole Location If Different From Surface

UL or lot No.	Section	Township	Range	Lot Idn	Feet from the	North/South line	Feet from the	East/West line	County
M	20	24-S	35-E		200	SOUTH	990	WEST	LEA

Dedicated Acres	Joint or Infill	Consolidation Code	Order No.
320			

NO ALLOWABLE WILL BE ASSIGNED TO THIS COMPLETION UNTIL ALL INTERESTS HAVE BEEN CONSOLIDATED
OR A NON-STANDARD UNIT HAS BEEN APPROVED BY THE DIVISION



OPERATOR CERTIFICATION

I hereby certify that the information herein is true and complete to the best of my knowledge and belief, and that this organization either owns a working interest or unassessed mineral interest in the land including the proposed bottom hole location or has a right to drill this well at this location pursuant to a contract with an owner of such mineral or working interest, or to a voluntary pooling agreement or a compulsory pooling order heretofore entered by the division.

Signature *Mayte Reyes* Date **3-12-18**

Printed Name **Mayte Reyes**
E-mail Address **mreyes1@concho.com**

SURVEYOR CERTIFICATION

I hereby certify that the well location shown on this plat was plotted from field notes of actual surveys made by me or under my supervision, and that the same is true and correct to the best of my belief.

DECEMBER 21, 2017

Date of Survey

Signature & Seal of Professional Surveyor

CHAD L. HARCROW
NEW MEXICO
17777
LICENSED PROFESSIONAL SURVEYOR
Certificate No. CHAD HARCROW 17777
W.O. # 17-1612 DRAWN BY: JH