

District I
1625 N. French Dr., Hobbs, NM 88240
Phone: (575) 393-6161 Fax: (575) 393-0720
District II
811 S. First St., Artesia, NM 88210
Phone: (575) 748-1283 Fax: (575) 748-9720
District III
1000 Rio Brazos Road, Aztec, NM 87410
Phone: (505) 334-6178 Fax: (505) 334-6170
District IV
1220 S. St. Francis Dr., Santa Fe, NM 87505
Phone: (505) 476-3460 Fax: (505) 476-3462

State of New Mexico
Energy, Minerals & Natural Resources
Department
OIL CONSERVATION DIVISION
1220 South St. Francis Dr.
Santa Fe, NM 87505

FORM C-102

Revised August 1, 2011

Submit one copy to appropriate

District Office

☐ AMENDED REPORT

WELL LOCATION AND ACREAGE DEDICATION PLAT

¹ API Number 30-025- 45081	² Pool Code 98135	³ Pool Name WC-025 G-09 S243310P; UPPER WOLFCAMP
⁴ Property Code 372239	⁵ Property Name CHARLES LING FED COM	
⁶ Well Number #212H	⁷ Elevation 3611'	
⁸ OGRID No. 228937	⁹ Operator Name MATADOR PRODUCTION COMPANY	

¹⁰Surface Location

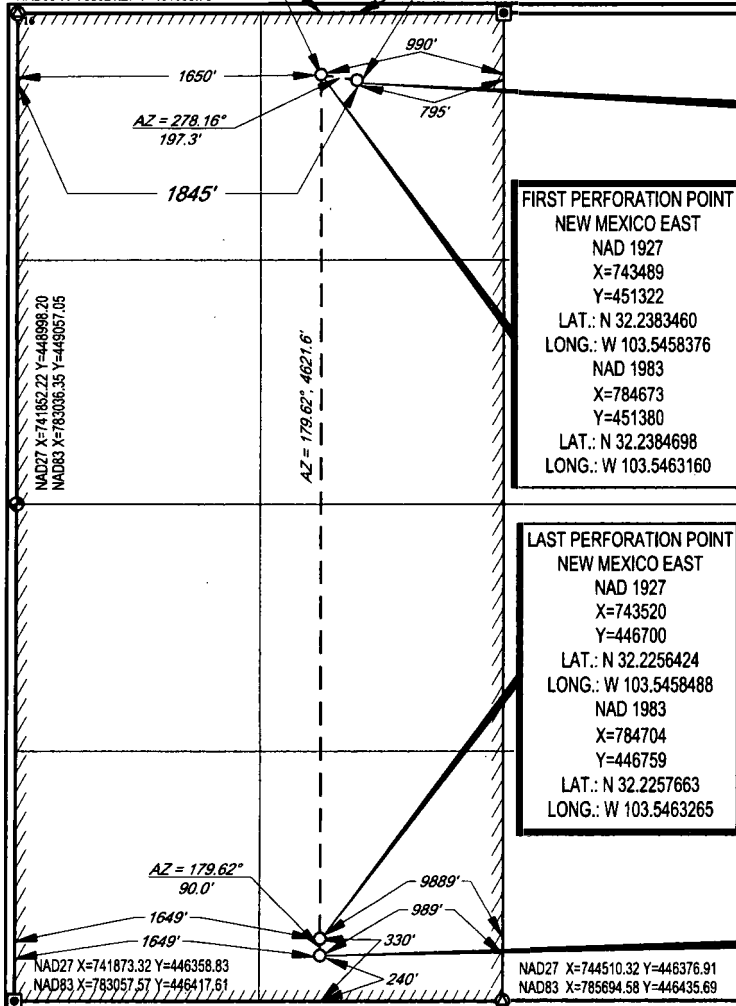
UL or lot no.	Section	Township	Range	Lot Idn	Feet from the	North/South line	Feet from the	East/West line	County
C	11	24-S	33-E	-C	360'	NORTH	1845'	WEST	LEA

UL or lot no.	Section	Township	Range	Lot Idn	Feet from the	North/South line	Feet from the	East/West line	County
N	11	24-S	33-E	-N	240'	SOUTH	1649'	WEST	LEA

¹² Dedicated Acres 320	¹³ Joint or Infill	¹⁴ Consolidation Code C	¹⁵ Order No.
--------------------------------------	-------------------------------	---------------------------------------	-------------------------

No allowable will be assigned to this completion until all interests have been consolidated or a non-standard unit has been approved by the division.

NAD27 X=741837.27 Y=451636.81
NAD83 X=783021.27 Y=451695.73



FIRST PERFORATION POINT
NEW MEXICO EAST
NAD 1927
X=743489
Y=451322
LAT.: N 32.2383460
LONG.: W 103.5458376
NAD 1983
X=784673
Y=451380
LAT.: N 32.2384698
LONG.: W 103.5463160

LAST PERFORATION POINT
NEW MEXICO EAST
NAD 1927
X=743520
Y=446700
LAT.: N 32.2256424
LONG.: W 103.5458488
NAD 1983
X=784704
Y=446759
LAT.: N 32.2257663
LONG.: W 103.5463265

SURFACE LOCATION
NEW MEXICO EAST
NAD 1927
X=743685
Y=451294
LAT.: N 32.2382651
LONG.: W 103.5452067
NAD 1983
X=784869
Y=451352
LAT.: N 32.2383890
LONG.: W 103.5456851

BOTTOM HOLE LOCATION
NEW MEXICO EAST
NAD 1927
X=743520
Y=446610
LAT.: N 32.2253950
LONG.: W 103.5458491
NAD 1983
X=784704
Y=446669
LAT.: N 32.2255189
LONG.: W 103.5463267

¹⁷OPERATOR CERTIFICATION

I hereby certify that the information contained herein is true and complete to the best of my knowledge and belief, and that this organization either owns a working interest or released mineral interest in the land including the proposed bottom hole location or has a right to drill this well at this location pursuant to a contract with an owner of such a mineral or working interest, or to a voluntary pooling agreement or a compulsory pooling order heretofore entered by the division.

Mike Deutsch
Signature Date
Mike Deutsch
Printed Name
mike@permitswest.com
E-mail Address

¹⁸SURVEYOR CERTIFICATION

I hereby certify that the well location shown on this plat was plotted from field notes of actual surveys made by me or under my supervision, and that the same is true to the best of my belief.

03/21/2018
Date of Survey
Signature and Seal of Professional Surveyor
MICHAEL J. BROWN
NEW MEXICO
18329
PROFESSIONAL SURVEYOR
Certificate Number