

DISTRICT I  
1625 N. FRISCO DR., BOBBS, NM 88240  
Phone: (505) 334-6181 Fax: (505) 334-6720

DISTRICT II  
811 S. FIRST ST., ARTESIA, NM 88210  
Phone: (505) 748-1283 Fax: (505) 748-9720

DISTRICT III  
1000 RIO BRAZOS RD., AZTEC, NM 87410  
Phone: (505) 334-6178 Fax: (505) 334-6170

DISTRICT IV  
1620 S. ST. FRANCIS DR., SANTA FE, NM 87505  
Phone: (505) 476-3450 Fax: (505) 476-3452

State of New Mexico  
Energy, Minerals & Natural Resources Department  
**OIL CONSERVATION DIVISION**  
1220 SOUTH ST. FRANCIS DR.  
Santa Fe, New Mexico 87505

Form C-102  
Revised August 1, 2011  
Submit one copy to appropriate  
District Office

☐ AMENDED REPORT

**WELL LOCATION AND ACREAGE DEDICATION PLAT**

API Number <b>30-025-45152</b>	Pool Code <b>97922</b>	Pool Name <b>WC-025 G-06 S223421L;BONE SPRING</b>
Property Code <b>30863</b>	Property Name <b>GAUCHO UNIT 29 WELLPAD 1</b>	Well Number <b>37H</b>
OGRD No. <b>6137</b>	Operator Name <b>DEVON ENERGY PRODUCTION COMPANY, L.P.</b>	Elevation <b>3431.3'</b>

**Surface Location**

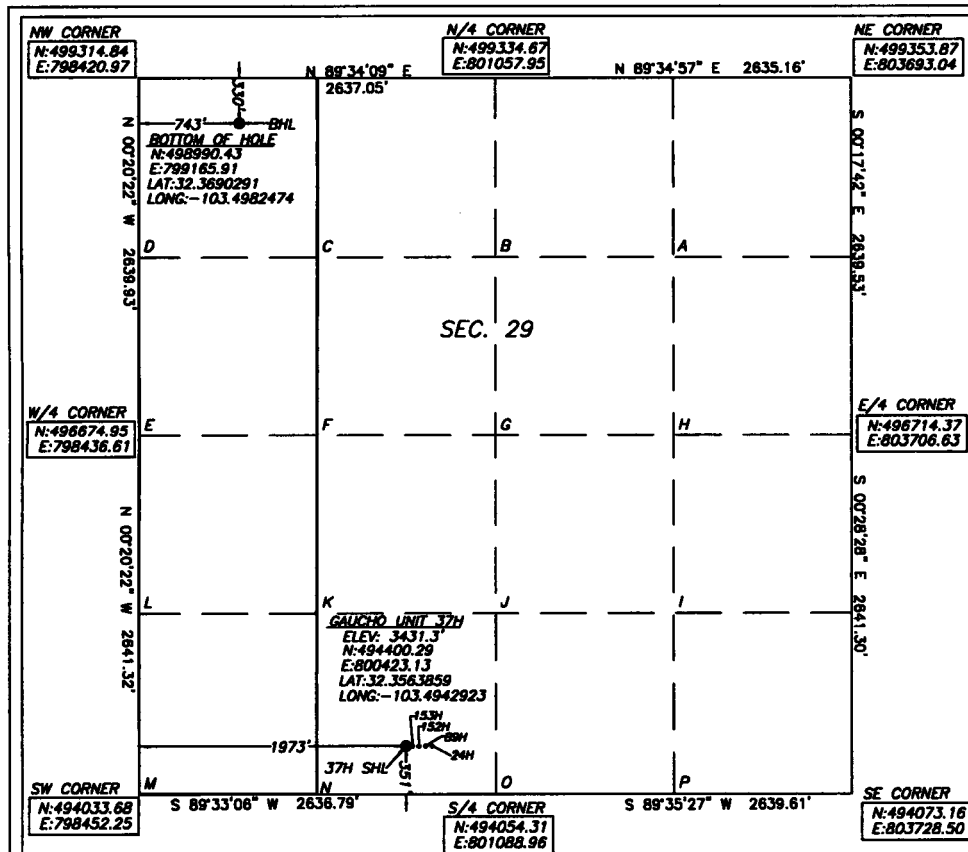
UL or lot No.	Section	Township	Range	Lot Idn	Feet from the	North/South line	Feet from the	East/West line	County
N	29	22-S	34-E		351	SOUTH	1973	WEST	LEA

**Bottom Hole Location If Different From Surface**

UL or lot No.	Section	Township	Range	Lot Idn	Feet from the	North/South line	Feet from the	East/West line	County
D	29	22-S	34-E		330	NORTH	743	WEST	LEA

Dedicated Acres	Joint or Infill	Consolidation Code	Order No.
160			

**NO ALLOWABLE WILL BE ASSIGNED TO THIS COMPLETION UNTIL ALL INTERESTS HAVE BEEN CONSOLIDATED  
OR A NON-STANDARD UNIT HAS BEEN APPROVED BY THE DIVISION**



Note: All bearings recited herein  
are based on the New Mexico  
State Plane Coordinate System,  
NAD 83, New Mexico East Zone  
3001, US Survey Feet, all  
distances are grid.

**OPERATOR CERTIFICATION**

I hereby certify that the information  
herein is true and complete to the best of  
my knowledge and belief, and that this  
organization either owns a working interest  
or unleased mineral interest in the land  
including the proposed bottom hole location  
or has a right to drill this well at this  
location pursuant to a contract with an  
owner of such mineral or working interest,  
or to a voluntary pooling agreement or a  
compulsory pooling order heretofore entered  
by the division.

*Rebecca Deal* 4/23/2018  
Signature Date

Rebecca Deal, Regulatory Analyst

Printed Name

rebecca.deal@dvn.com

E-mail Address

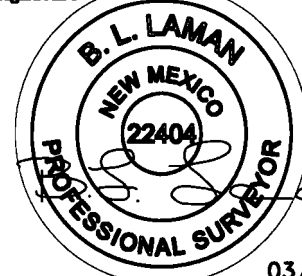
**SURVEYOR CERTIFICATION**

I hereby certify that the well location  
shown on this plat was plotted from field  
notes of actual surveys made by me or  
under my supervision, and that the same is  
true and correct to the best of my belief.

02/2018

Date of Survey

Signature & Seal of Professional Surveyor



03/01/18

Certificate No. 22404

B.L. LAMAN

W.O. #

DRAWN BY: CM

First Take Point: 330' FSL & 743' FEL, 29-22S-34E

Last Take Point: 330' FNL & 743' FEL, 29-22S-34E