

District I  
1625 N. French Dr., Hobbs, NM 88240  
Phone: (575) 393-6161 Fax: (575) 393-0720  
District II  
811 S. First St., Artesia, NM 88210  
Phone: (575) 748-1283 Fax: (575) 748-9720  
District III  
1000 Rio Brazos Road, Aztec, NM 87410  
Phone: (505) 334-6178 Fax: (505) 334-6170  
District IV  
1220 S. St. Francis Dr., Santa Fe, NM 87505  
Phone: (505) 476-3460 Fax: (505) 476-3462

State of New Mexico  
Energy, Minerals & Natural Resources Department  
OIL CONSERVATION DIVISION  
1220 South St. Francis Dr.  
Santa Fe, NM 87505

Form C-102  
Revised August 1, 2011  
Submit one copy to appropriate  
District Office

SEP 05 2018

☐ AMENDED REPORT

RECEIVED

WELL LOCATION AND ACREAGE DEDICATION PLAT

<sup>1</sup> API Number 70-025-49167		<sup>2</sup> Pool Code 97922		<sup>3</sup> Pool Name WC-025 G-06 S223421L; BONE SPRING	
<sup>4</sup> Property Code 30884 30867		<sup>5</sup> Property Name GAUCHO UNIT			<sup>6</sup> Well Number 28H
<sup>7</sup> OGRID No. 6137		<sup>8</sup> Operator Name DEVON ENERGY PRODUCTION COMPANY, L.P.			<sup>9</sup> Elevation 3434.3

<sup>10</sup> Surface Location

UL or lot no.	Section	Township	Range	Lot Idn	Feet from the	North/South line	Feet from the	East/West line	County
P	30	22 S	34 E		375	SOUTH	640	EAST	LEA

<sup>11</sup> Bottom Hole Location If Different From Surface

UL or lot no.	Section	Township	Range	Lot Idn	Feet from the	North/South line	Feet from the	East/West line	County
B	30	22 S	34 E		330	NORTH	1897	EAST	LEA

<sup>12</sup> Dedicated Acres	<sup>13</sup> Joint or Infill	<sup>14</sup> Consolidation Code	<sup>15</sup> Order No.
-------------------------------	-------------------------------	----------------------------------	-------------------------

No allowable will be assigned to this completion until all interests have been consolidated or a non-standard unit has been approved by the division.

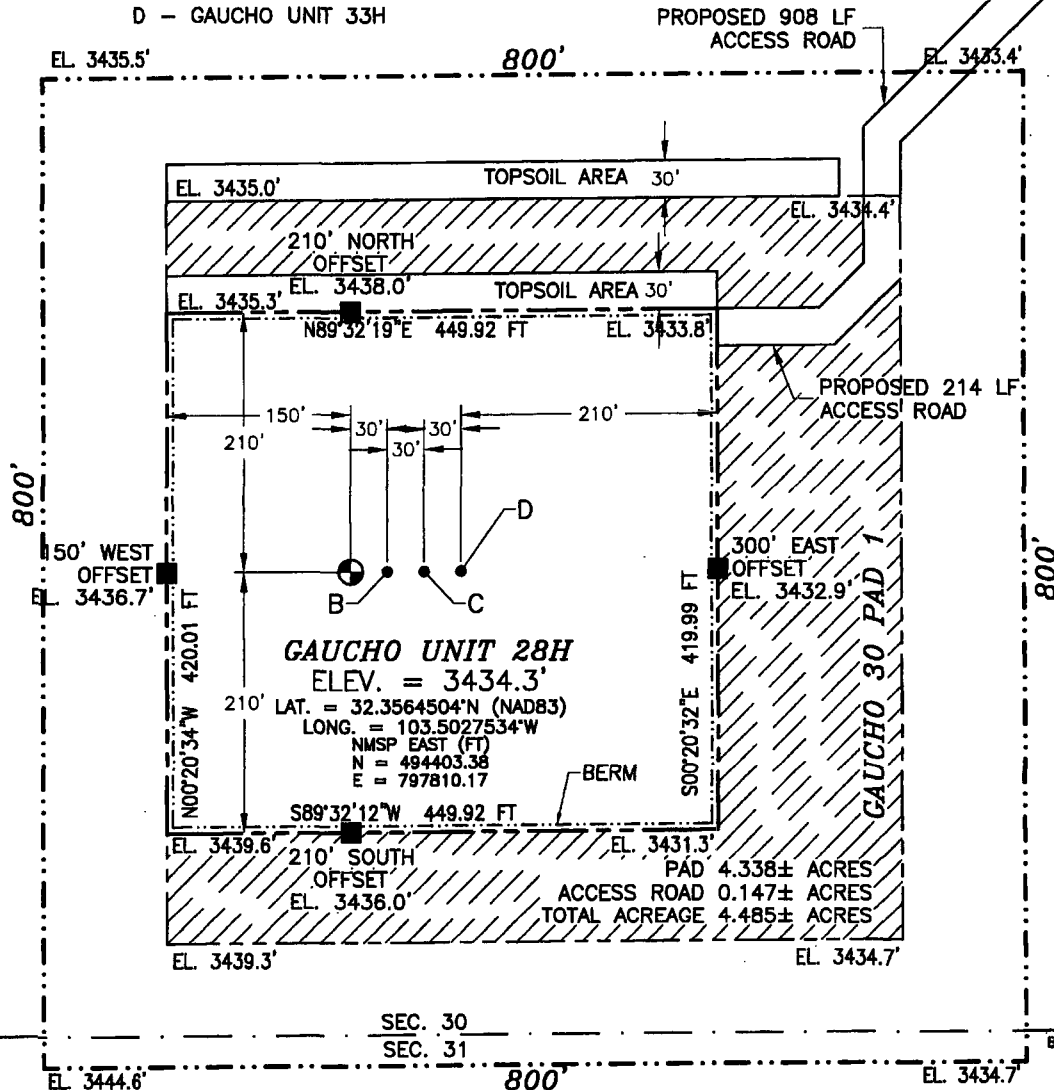
<p>N89°32'14"E 2604.86 FT</p> <p>NW CORNER SEC. 30 LAT. = 32.3699312°N LONG. = 103.5175204°W NMSP EAST (FT) N = 499272.72 E = 793212.80</p> <p>LOT 1</p> <p>LOT 2</p> <p>NOTE: LATITUDE AND LONGITUDE COORDINATES ARE SHOWN USING THE NORTH AMERICAN DATUM OF 1983 (NAD83). LISTED NEW MEXICO STATE PLANE EAST COORDINATES ARE GRID (NAD83). BASIS OF BEARING AND DISTANCES USED ARE NEW MEXICO STATE PLANE EAST COORDINATES MODIFIED TO THE SURFACE. VERTICAL DATUM NAVD83.</p> <p>LOT 3</p> <p>LOT 4</p> <p>SW CORNER SEC. 30 LAT. = 32.3554154°N LONG. = 103.5175183°W NMSP EAST (FT) N = 493991.79 E = 793253.71</p> <p>S O CORNER SEC. 30 LAT. = 32.3554180°N LONG. = 103.5092273°W NMSP EAST (FT) N = 494012.34 E = 794813.96</p> <p>SE CORNER SEC. 30 LAT. = 32.3554203°N LONG. = 103.5006833°W NMSP EAST (FT) N = 494033.60 E = 794852.33</p> <p>589°32'24"W 2560.78 FT</p>		<p>N89°32'14"E 2604.86 FT</p> <p>DNF</p> <p>1897'</p> <p>330'</p> <p>BOTTOM OF HOLE</p> <p>NE CORNER SEC. 30 LAT. = 32.3699366°N LONG. = 103.5006503°W NMSP EAST (FT) N = 499314.79 E = 798421.43</p> <p>E O CORNER SEC. 30 LAT. = 32.3626804°N LONG. = 103.5006679°W NMSP EAST (FT) N = 496674.90 E = 798436.55</p> <p>GAUCHO UNIT 28H ELEV. = 3434.3' LAT. = 32.3564504°N (NAD83) LONG. = 103.5027534°W NMSP EAST (FT) N = 494403.38 E = 797810.17</p> <p>SURFACE LOCATION</p> <p>375'</p> <p>640'</p> <p>589°32'18"W 2638.92 FT</p>		<p><b>" OPERATOR CERTIFICATION</b></p> <p>I hereby certify that the information contained herein is true and complete to the best of my knowledge and belief, and that this organization either owns a working interest or unleased mineral interest in the land including the proposed bottom hole location or has a right to drill this well at this location pursuant to a contract with an owner of such a mineral or working interest, or to a voluntary pooling agreement or a compulsory pooling order heretofore entered by the division.</p> <p>Rebecca Deal 3/12/2018 Signature Date</p> <p>Rebecca Deal, Regulatory Analyst Printed Name</p> <p>rebecca.deal@dvn.com E-mail Address</p> <p><b>"SURVEYOR CERTIFICATION</b></p> <p>I hereby certify that the well location shown on this plat was plotted from field notes of actual surveys made by me or under my supervision, and that the same is true and correct to the best of my belief.</p> <p>FEBRUARY 23 2018 Date of Survey</p> <p>Signature and Seal of Professional Surveyor Certificate Number: 12797 SURVEY NO. 3535C</p>
---	--	--	--	--

First Take Point: 330' FSL & 1897' FEL, 30-22S-34E  
Last Take Point: 330' FNL & 1897' FEL, 30-22S-34E

SECTION 30, TOWNSHIP 22 SOUTH, RANGE 34 EAST, N.M.P.M.  
LEA COUNTY, STATE OF NEW MEXICO  
**SITE MAP**

B - GAUCHO UNIT 26H  
C - GAUCHO UNIT 31H  
D - GAUCHO UNIT 33H

NOTE: LATITUDE AND LONGITUDE COORDINATES ARE SHOWN USING THE NORTH AMERICAN DATUM OF 1983 (NAD83) LISTED NEW MEXICO STATE PLANE EAST COORDINATES ARE GRID (NAD83). BASIS OF BEARING AND DISTANCES USED ARE NEW MEXICO STATE PLANE EAST COORDINATES MODIFIED TO THE SURFACE. VERTICAL DATUM NAVD88.



015 75 150 300  
SCALE 1" = 150'

**DIRECTIONS TO LOCATION**

FROM THE INTERSECTION OF STATE HIGHWAY 128 & CR 21 (DEL BASIN ROAD) GO NORTH & EAST ON CR 21 APPROX. 9.4 MILES TO A LEASE ROAD ON LEFT (NORTH) GO NORTH APPROX. 2.3 MILES TO A LEASE ROAD ON LEFT (WEST) GO WEST APPROX. 1.0 MILE TO A ROAD LATH WITH RED & WHITE FLAGGING ON LEFT (SOUTH) GO SOUTH & WEST 1122' TO NORTHEAST PAD CORNER FOR THIS LOCATION.

DEVON ENERGY PRODUCTION COMPANY, L.P.  
**GAUCHO UNIT 28H**

LOCATED 375 FT. FROM THE SOUTH LINE  
AND 640 FT. FROM THE EAST LINE OF  
SECTION 30, TOWNSHIP 22 SOUTH,  
RANGE 34 EAST, N.M.P.M.  
LEA COUNTY, STATE OF NEW MEXICO

FEBRUARY 28, 2018

SURVEY NO. 3535C

MADRON SURVEYING, INC. 301 SOUTH CANAL (575) 234-3341

CARLSBAD, NEW MEXICO