

DISTRICT I
1625 N. FRENCH DR., HOBBS, NM 88240
Phone: (575) 393-0101 Fax: (575) 393-0720

DISTRICT II
511 S. FIRST ST., ARTESIA, NM 88210
Phone: (575) 748-1853 Fax: (575) 748-0720

DISTRICT III
1000 RIO BRAZOS RD., AZTEC, NM 87410
Phone: (505) 334-6178 Fax: (505) 334-6170

DISTRICT IV
1220 S. ST. FRANCIS DR., SANTA FE, NM 87505
Phone: (505) 476-3460 Fax: (505) 476-3462

State of New Mexico
Energy, Minerals & Natural Resources Department
OIL CONSERVATION DIVISION
1220 SOUTH ST. FRANCIS DR.
Santa Fe, New Mexico 87505

HOBBS OCD

Form C-102
Revised August 1, 2011
Submit one copy to appropriate
District Office

RECEIVED

☐ AMENDED REPORT

WELL LOCATION AND ACREAGE DEDICATION PLAT

API Number 30-025-45106	Pool Code 97922	Pool Name WC-025 G-06 S223421L;BONE SPRING
Property Code 30863	Property Name GAUCHO UNIT	Well Number 24H
GRID No. 6137	Operator Name DEVON ENERGY PRODUCTION COMPANY, L.P.	Elevation 3430.3'

Surface Location

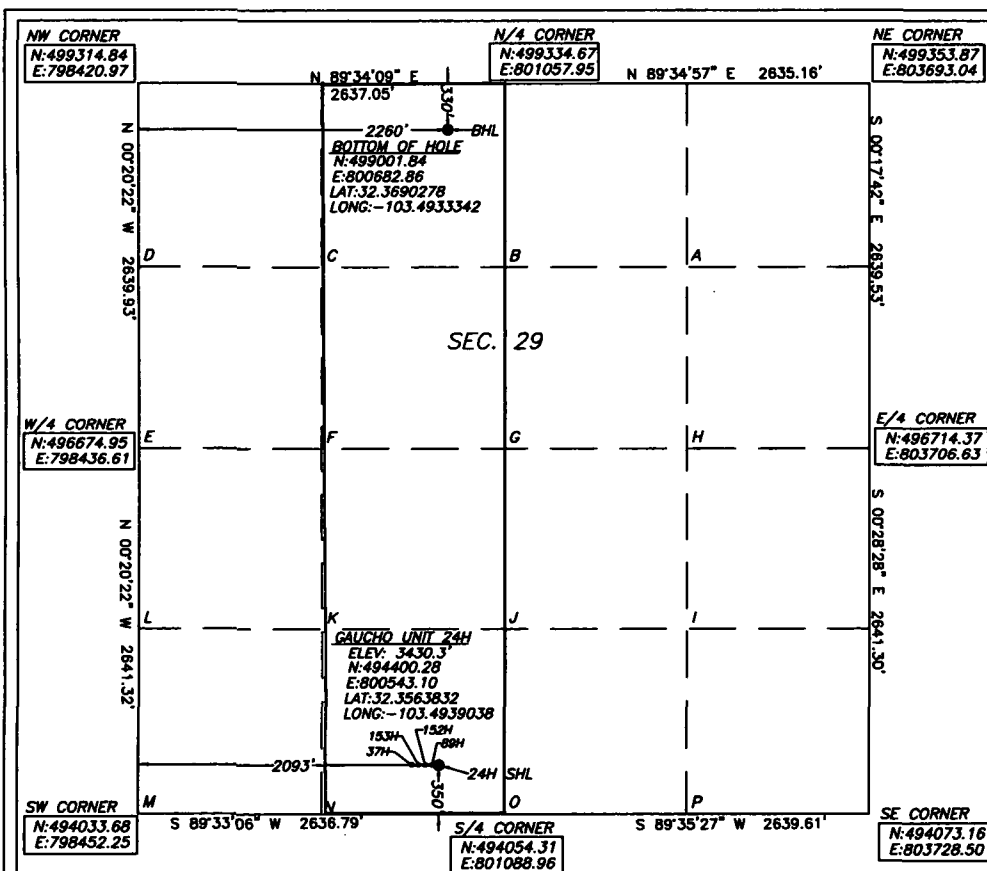
UL or lot No.	Section	Township	Range	Lot Idn	Feet from the	North/South line	Feet from the	East/West line	County
N	29	22-S	34-E		350	SOUTH	2093	WEST	LEA

Bottom Hole Location If Different From Surface

UL or lot No.	Section	Township	Range	Lot Idn	Feet from the	North/South line	Feet from the	East/West line	County
C	29	22-S	34-E		330	NORTH	2260	WEST	LEA

Dedicated Acres	Joint or Infill	Consolidation Code	Order No.
160			

NO ALLOWABLE WILL BE ASSIGNED TO THIS COMPLETION UNTIL ALL INTERESTS HAVE BEEN CONSOLIDATED
OR A NON-STANDARD UNIT HAS BEEN APPROVED BY THE DIVISION



Note: All bearings recited herein
are based on the New Mexico
State Plane Coordinate System,
NAD 83, New Mexico East Zone
3001, US Survey Feet, all
distances are grid.

OPERATOR CERTIFICATION

I hereby certify that the information
herein is true and complete to the best of
my knowledge and belief, and that this
organization either owns a working interest
or unleased mineral interest in the land
including the proposed bottom hole location
or has a right to drill this well at this
location pursuant to a contract with an
owner of such mineral or working interest,
or to a voluntary pooling agreement or a
compulsory pooling order heretofore entered
by the division.

Rebecca Deal 4/23/2018
Signature Date
Rebecca Deal, Regulatory Analyst
Printed Name
rebecca.deal@dmv.com
E-mail Address

SURVEYOR CERTIFICATION

I hereby certify that the well location
shown on this plat was plotted from field
notes of actual surveys made by me or
under my supervision, and that the same is
true and correct to the best of my belief.

02/2018

Date of Survey

Signature & Seal of Professional Surveyor

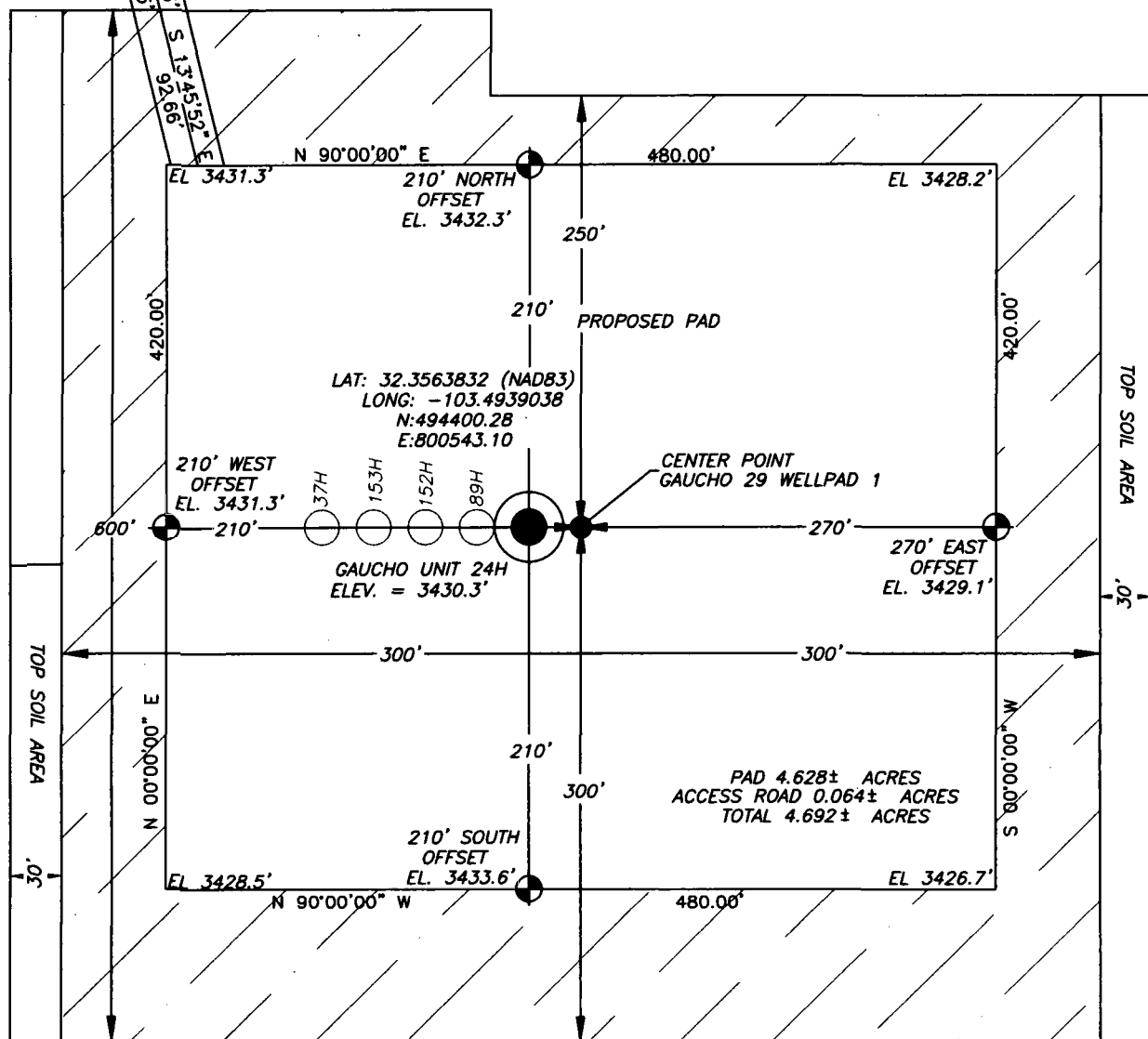


03/01/18

Certificate No. 22404 B.L. LAMAN
W.O. # DRAWN BY: CM

First Take Point: 330' FSL & 2260' FWL, 29-22S-34E
Last Take Point: 330' FNL & 2260' FWL, 29-22S-34E

SECTION 29, TOWNSHIP 22 SOUTH, RANGE 34 EAST, N.M.P.M.
LEA COUNTY, STATE OF NEW MEXICO
SITE MAP



Note: All bearings recited herein are based on the New Mexico State Plane Coordinate System, NAD 83, New Mexico East Zone 3001, US Survey Feet, all distances are grid.

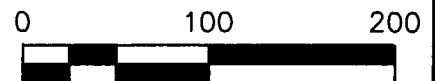
DEVON ENERGY PRODUCTION COMPANY, L.P.

GAUCHO UNIT 24H

LOCATED 350 FT. FROM THE SOUTH LINE
AND 2093 FT. FROM THE WEST LINE OF
SECTION 29, TOWNSHIP 22 SOUTH,
RANGE 34 EAST, N.M.P.M.
LEA COUNTY, STATE OF NEW MEXICO

DIRECTIONS TO LOCATION

FROM THE INTERSECTION OF NM-128 AND DELAWARE BASIN ROAD, HEAD NORTH TOWARD BELL LAKE FOR 9.5 MILES. TURN LEFT ONTO AN UNNAMED LEASE ROAD AND TRAVEL 2.28 MILES. TURN LEFT AND TRAVEL WEST FOR 0.67 MILES TO THE WEST SIDE OF AN EXISTING WELLPAD. TURN LEFT AND TRAVEL SOUTH FOR 0.14 MILES. MAKE A LEFT TURN OFF OF THE EXISTING ACCESS ROAD AND BARE SOUTHEAST FOR 300' TO THE NORTHWEST CORNER OF THE 420' X 480' SUB PAD FOR THE GAUCHO 29 WELLPAD 1.



HORIZON ROW LLC

DEVON ENERGY PRODUCTION CO., L.P.

Drawn by:
CHRIS MAAS
REV: JEANNIE PERRY

Date: 02/26/2018
Date: 04/12/2018

Drawn for:

devon