

District I
1625 N. French Dr., Hobbs, NM 88240
Phone: (575) 393-6161 Fax: (575) 393-0720
District II
811 S. First St., Artesia, NM 88210
Phone: (575) 748-1283 Fax: (575) 748-9720
District III
1000 Rio Brazos Road, Aztec, NM 87410
Phone: (505) 334-6178 Fax: (505) 334-6170
District IV
1220 S. St. Francis Dr., Santa Fe, NM 87505
Phone: (505) 476-3460 Fax: (505) 476-3462

State of New Mexico
Energy, Minerals & Natural Resources Department
OIL CONSERVATION DIVISION
1220 South St. Francis Dr.
Santa Fe, NM 87505

Form C-102
Revised August 1, 2011
Submit one copy to appropriate
District Office

☐ AMENDED REPORT

MIN 5
SURP P
HOBBS OCD
SEP 20 2018
RECEIVED

WELL LOCATION AND ACREAGE DEDICATION PLAT

¹ API Number 70-026-45214	² Pool Code 96553	³ Pool Name Ojo Chiso; Bone Spring
⁴ Property Code 318034	⁵ Property Name TOUR BUS 23 STATE	⁶ Well Number 604H
⁷ GRID No. 372165	⁸ Operator Name CENTENNIAL RESOURCE PRODUCTION, LLC	⁹ Elevation 3472.4'

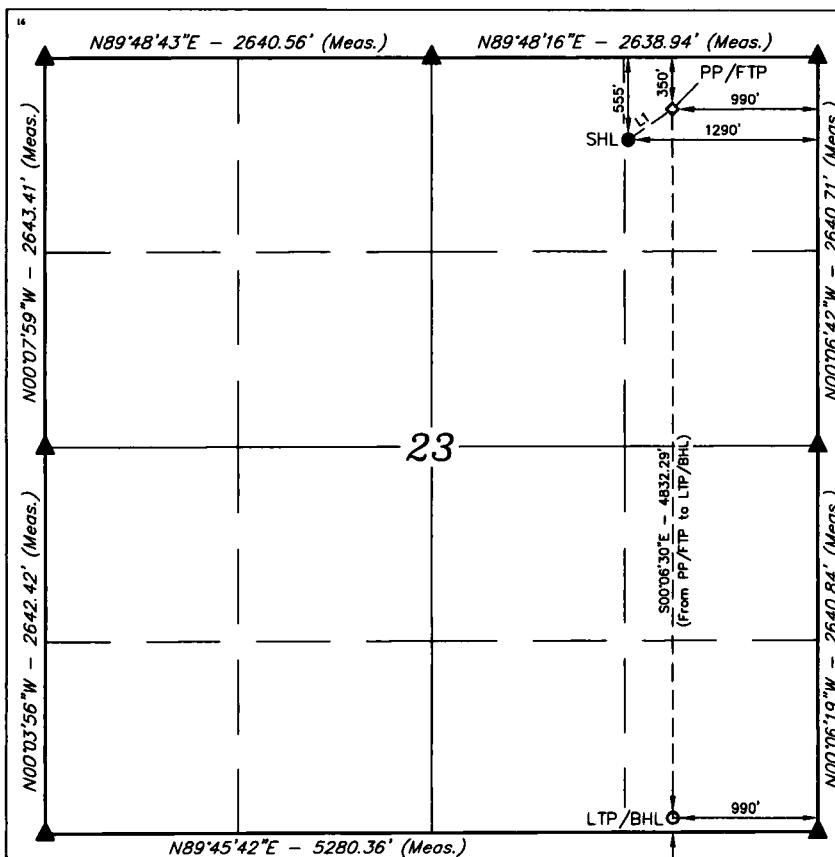
Surface Location

UL or lot no.	Section	Township	Range	Lot Idn	Feet from the	North/South line	Feet from the	East/West line	County
A	23	22S	34E		555	NORTH	1290	EAST	LEA

Bottom Hole Location If Different From Surface

UL or lot no.	Section	Township	Range	Lot Idn	Feet from the	North/South line	Feet from the	East/West line	County
P	23	22S	34E		100	SOUTH	990	EAST	LEA
¹² Dedicated Acres 160	¹³ Joint or Infill	¹⁴ Consolidation Code	¹⁵ Order No.						

No allowable will be assigned to this completion until all interests have been consolidated or a non-standard unit has been approved by the division.



OPERATOR CERTIFICATION

I hereby certify that the information contained herein is true and complete to the best of my knowledge and belief, and that this organization either owns a working interest or unleased mineral interest in the land including the proposed bottom hole location or has a right to drill this well at this location pursuant to a contract with an owner of such a mineral or working interest, or to a voluntary pooling agreement or a compulsory pooling order heretofore entered by the division.

Signature: K. C. Date: 9/19/18

Printed Name: Kanicia Castillo

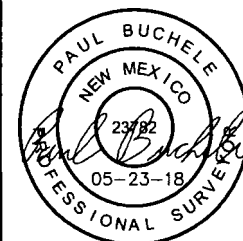
E-mail Address: kanicia.castillo@cdevinc.com

SURVEYOR CERTIFICATION

I hereby certify that the well location shown on this plat was plotted from field notes of actual surveys made by me or under my supervision, and that the same is true and correct to the best of my belief.

April 25, 2018

Date of Survey
Signature and Seal of Professional Surveyor:



Certificate Number:

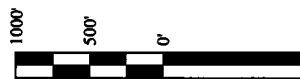
LINE TABLE

LINE	DIRECTION	LENGTH
L1	N55°29'16"E	363.62'

NOTE:

- Distances referenced on plat to section lines are perpendicular.
- Basis of Bearing is a Transverse Mercator Projection with a Central Meridian of W103°53'00"

- = SURFACE HOLE LOCATION
- ◇ = PP/FTP
- = LTP/BHL
- ▲ = SECTION CORNER LOCATED



SCALE
DRAWN BY: J.N. 04-30-18

NAD 83 (SURFACE HOLE LOCATION)
LATITUDE = 32°22'58.55" (32.382930°)
LONGITUDE = 103°26'10.99" (103.436385°)
STATE PLANE NAD 83 (N.M. EAST)
Y: 504202.13' X: 818223.89'
UTM, NAD 83 (ZONE 13)
Y: 11758365.20' X: 2122969.94'
NAD 83 (PP/FTP)
LATITUDE = 32°23'00.57" (32.383492°)
LONGITUDE = 103°26'07.48" (103.435412°)
STATE PLANE NAD 83 (N.M. EAST)
Y: 504409.37' X: 818522.60'
UTM, NAD 83 (ZONE 13)
Y: 11758574.28' X: 2123267.31'
NAD 83 (LTP/BHL)
LATITUDE = 32°22'12.76" (32.370212°)
LONGITUDE = 103°26'07.61" (103.435448°)
STATE PLANE NAD 83 (N.M. EAST)
Y: 499577.93' X: 818552.05'
UTM, NAD 83 (ZONE 13)
Y: 11753743.73' X: 2123326.86'