

District I
1625 N. French Dr., Hobbs, NM 88240
Phone: (575) 393-6161 Fax: (575) 393-0720
District II
811 S. First St., Artesia, NM 88210
Phone: (575) 748-1283 Fax: (575) 748-9720
District III
1000 Rio Brazos Road, Aztec, NM 87410
Phone: (505) 334-6178 Fax: (505) 334-6170
District IV
1220 S. St. Francis Dr., Sante Fe, NM 87505
Phone: (505) 476-3460 Fax: (505) 476-3462

HOBBS OCD
SEP 26 2018
RECEIVED

State of New Mexico
Energy, Minerals & Natural Resources
Department
OIL CONSERVATION DIVISION
1220 South St. Francis Dr.
Sante Fe, NM 87505

FORM C-102
Revised August 1, 2011
Submit one copy to appropriate
District Office

AMENDED REPORT

WELL LOCATION AND ACREAGE DEDICATION PLAT

¹ API Number 30-025-42862	² Pool Code 96392	³ Pool Name DRAPER MILL; BONE SPRING
⁴ Property Code 315310	⁵ Property Name STREETCAR 15 FEDERAL BS	
⁷ OGRID No. 7377	⁸ Operator Name EOG RESOURCES, INC.	⁶ Well Number 705 H
⁹ Elevation 3366'		

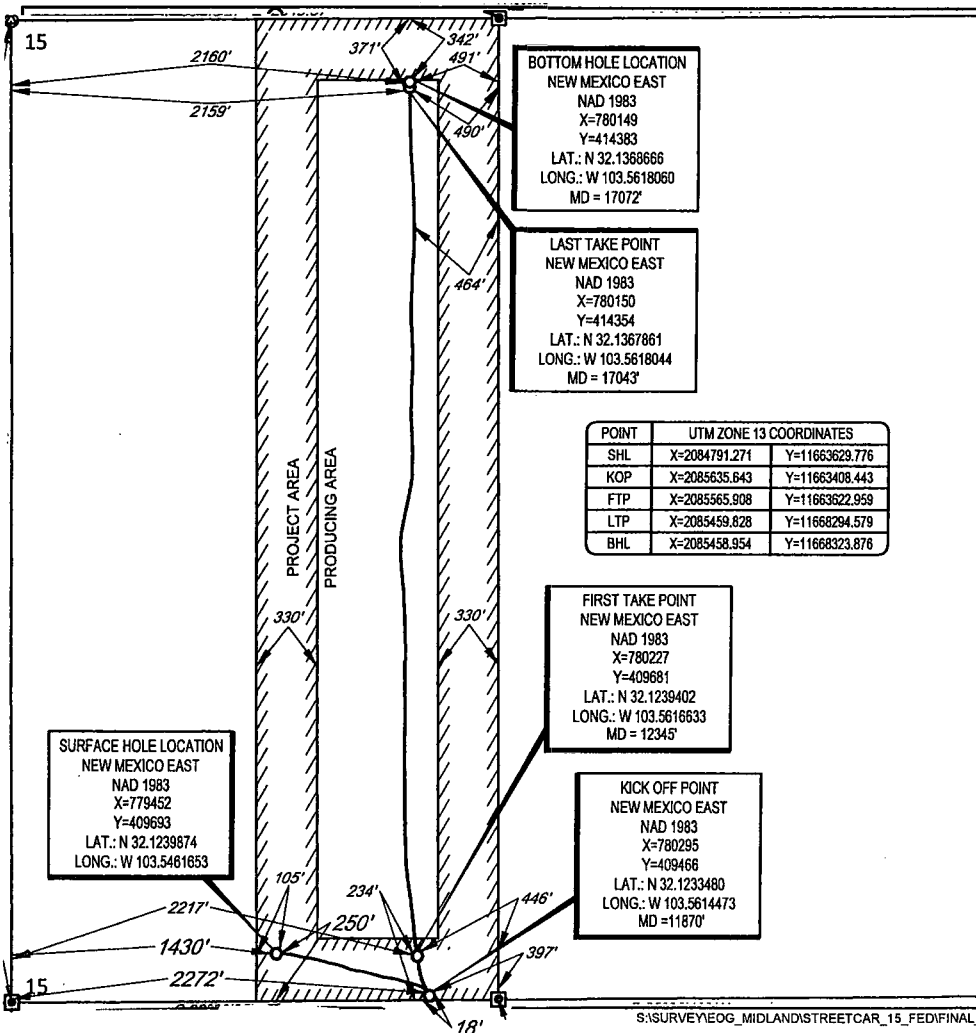
¹⁰Surface Location

UL or lot no.	Section	Township	Range	Lot Idn	Feet from the	North/South line	Feet from the	East/West line	County
N	15	25-S	33-E	-	250'	SOUTH	1430'	WEST	LEA

UL or lot no.	Section	Township	Range	Lot Idn	Feet from the	North/South line	Feet from the	East/West line	County
C	15	25-S	33-E	-	342'	NORTH	2160'	WEST	LEA

¹² Dedicated Acres 160.00	¹³ Joint or Infill	¹⁴ Consolidation Code	¹⁵ Order No.
---	-------------------------------	----------------------------------	-------------------------

No allowable will be assigned to this completion until all interests have been consolidated or a non-standard unit has been approved by the division.



¹⁷OPERATOR CERTIFICATION
I hereby certify that the information contained herein is true and complete to the best of my knowledge and belief, and that this organization either owns a working interest or unleased mineral interest in the land including the proposed bottom hole location or has a right to drill this well at this location pursuant to a contract with an owner of such a mineral or working interest, or to a voluntary pooling agreement or a compulsory pooling order heretofore entered by the division.

Kay Maddox 9/24/18
Signature Date

KAY MADDOX
Printed Name

E-mail Address

¹⁸SURVEYOR CERTIFICATION
I hereby certify that the well location shown on this plat was plotted from field notes of actual surveys made by me or under my supervision, and that the same is true to the best of my belief.

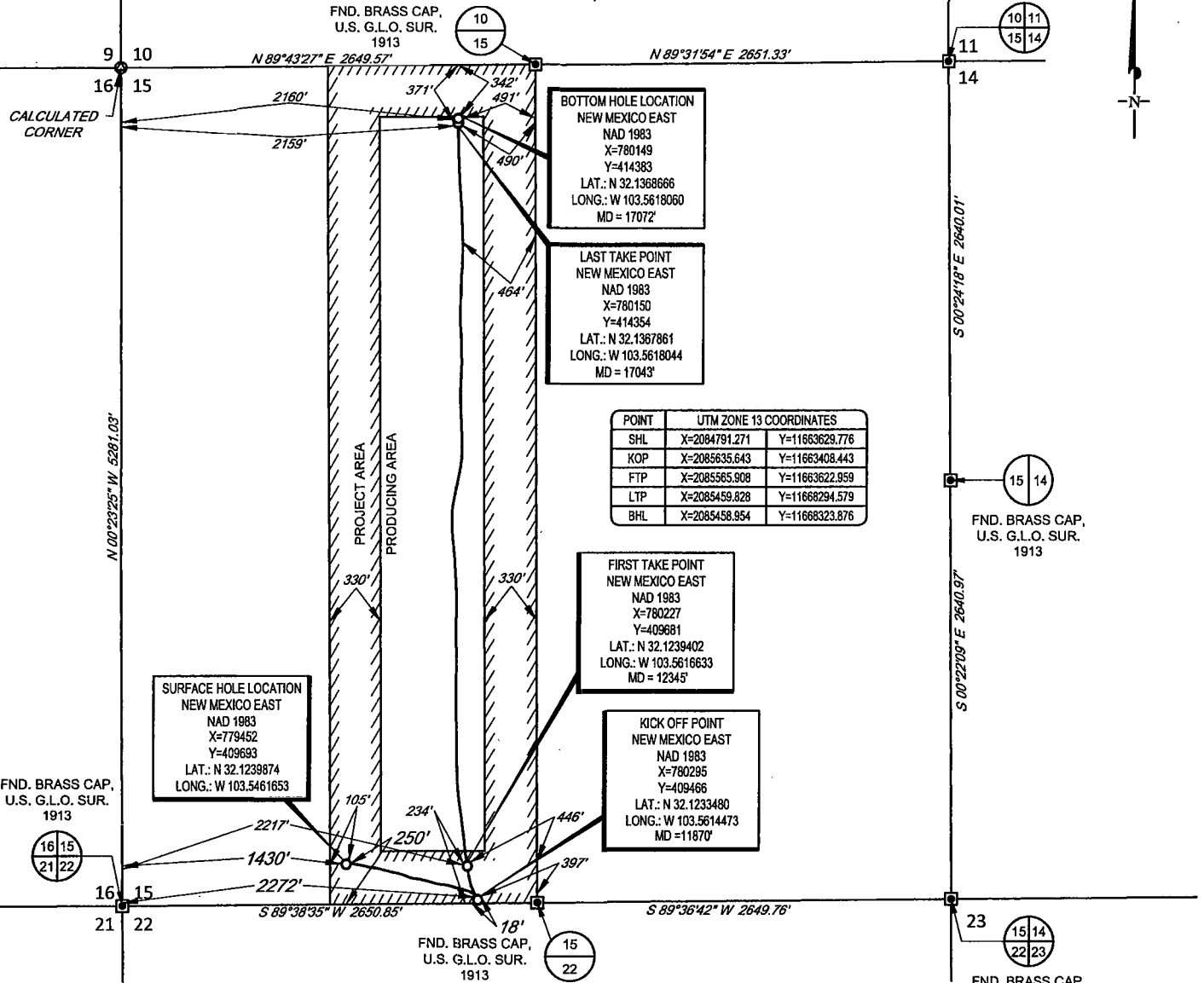
Michael B. Brown
Date of Survey
Signature and Seal of Professional Surveyor
18329
Professional Surveyor

Certificate Number

SCALE: 1" = 1000'

SECTION 15, TOWNSHIP 25-S, RANGE 33-E, N.M.P.M.
LEA COUNTY, NEW MEXICO

FND. BRASS CAP,
U.S. G.L.O. SUR.
1913



BOTTOM HOLE LOCATION
NEW MEXICO EAST
NAD 1983
X=780149
Y=414383
LAT.: N 32.1368666
LONG.: W 103.5618060
MD = 17072'

LAST TAKE POINT
NEW MEXICO EAST
NAD 1983
X=780150
Y=414354
LAT.: N 32.1367861
LONG.: W 103.5618044
MD = 17043'

POINT	UTM ZONE 13 COORDINATES	
SHL	X=2084791.271	Y=11663629.776
KOP	X=2085635.643	Y=11663408.443
FTP	X=2085565.908	Y=11663622.959
LTP	X=2085459.828	Y=11666294.579
BHL	X=2085458.954	Y=11666323.876

FIRST TAKE POINT
NEW MEXICO EAST
NAD 1983
X=780227
Y=409681
LAT.: N 32.1239402
LONG.: W 103.5616633
MD = 12345'

KICK OFF POINT
NEW MEXICO EAST
NAD 1983
X=780295
Y=409466
LAT.: N 32.1233480
LONG.: W 103.5614473
MD = 11870'

SURFACE HOLE LOCATION
NEW MEXICO EAST
NAD 1983
X=779452
Y=409693
LAT.: N 32.1239874
LONG.: W 103.5461653

LEASE NAME & WELL NO.: STREETCAR 15 FED #705H
SECTION 15 TWP 25-S RGE 33-E SURVEY N.M.P.M.
COUNTY LEA STATE NM ELEVATION 3366'
DESCRIPTION 250' FSL & 1430' FWL

TOPOGRAPHIC
LOYALTY INNOVATION LEGACY
1400 EVERMAN PARKWAY, Ste. 146 - FT. WORTH, TEXAS 76140
TELEPHONE: (817) 744-7512 - FAX (817) 744-7548
TEXAS FIRM REGISTRATION NO. 10042504
WWW.TOPOGRAPHIC.COM



Michael Blake Brown, P.S. No. 18329
SEPTEMBER 21, 2018

STREETCAR 15 FED #705H AS-COMPLETED DATE: 09/21/18 FILE: AD_STREETCAR15FED_705H DRAWN BY: JDR SHEET: 1 OF 1	REVISION:	NOTES: 1. ORIGINAL DOCUMENT SIZE: 8.5" X 11" 2. ALL BEARINGS, DISTANCES, AND COORDINATE VALUES CONTAINED HEREIN ARE GRID BASED UPON THE NEW MEXICO STATE PLANE COORDINATE SYSTEM, EAST ZONE, U.S. SURVEY FEET, NORTH AMERICAN DATUM 1983. 3. THIS WELL LOCATION SHOWN HEREON HAS BEEN SURVEYED ON THE GROUND UNDER MY SUPERVISION AND PREPARED ACCORDING TO THE EVIDENCE FOUND AT THE TIME OF SURVEY, AND DATA PROVIDED BY EOG RESOURCES, INC. THIS CERTIFICATION IS MADE AND LIMITED TO THOSE PERSONS OR ENTITIES SHOWN ON THE FACE OF THIS PLAT AND IS NON-TRANSFERABLE. THIS SURVEY IS CERTIFIED FOR THIS TRANSACTION ONLY.