

UNITED STATES
DEPARTMENT OF THE INTERIOR
BUREAU OF LAND MANAGEMENT

OCD Hobbs

HOBBS OCD

FORM APPROVED
OMB No. 1004-0137
Expires: July 31, 2010

WELL COMPLETION OR RECOMPLETION REPORT AND LOG

OCT 24 2018

RECEIVED

5. Lease Serial No.
NMNM108503

6. If Indian, Allottee or Tribe Name

7. Unit or CA Agreement Name and No.

8. Lease Name and Well No.
CABALLO 23 FED COM 702H

9. API Well No.
30-025-43876-00-S1

10. Field and Pool, or Exploratory
BOBCAT DRAW-UPR WOLFCAMP

11. Sec., T., R., M., or Block and Survey
or Area Sec 23 T25S R33E Mer NMP

12. County or Parish
LEA

13. State
NM

14. Date Spudded
04/19/2018

15. Date T.D. Reached
06/20/2018

16. Date Completed
☐ D & A ☒ Ready to Prod.
08/19/2018

17. Elevations (DF, KB, RT, GL)*
3342 GL

18. Total Depth: MD 18389 TVD 12340

19. Plug Back T.D.: MD 18389 TVD 12340

20. Depth Bridge Plug Set: MD TVD

21. Type Electric & Other Mechanical Logs Run (Submit copy of each)
NONE

22. Was well cored? ☒ No ☐ Yes (Submit analysis)
Was DST run? ☒ No ☐ Yes (Submit analysis)
Directional Survey? ☐ No ☒ Yes (Submit analysis)

23. Casing and Liner Record (Report all strings set in well)

Hole Size	Size/Grade	Wt. (#/ft.)	Top (MD)	Bottom (MD)	Stage Cementer Depth	No. of Sk. & Type of Cement	Slurry Vol. (BBL)	Cement Top*	Amount Pulled
17.500	13.375 J-55	54.5	0	1197		1220		0	
12.250	9.625 J-55	40.0	0	4994		1685		0	
8.750	7.625 HCP-110	29.7	0	11793		510		1036	
6.750	5.500 ECP-110	23.0	0	18388		825		7530	

24. Tubing Record

Size	Depth Set (MD)	Packer Depth (MD)	Size	Depth Set (MD)	Packer Depth (MD)	Size	Depth Set (MD)	Packer Depth (MD)

25. Producing Intervals

Formation	Top	Bottom	Perforated Interval	Size	No. Holes	Perf. Status
A) WOLFCAMP	13656	18389	13656 TO 18389	3.000	1200	OPEN PRODUCING
B)						
C)						
D)						

26. Perforation Record

27. Acid, Fracture, Treatment, Cement Squeeze, Etc.

Depth Interval	Amount and Type of Material
13656 TO 18389	FRAC W/14,541,920 LBS PROPPANT;212,382 BBLs LOAD FLUID

28. Production - Interval A

Date First Produced	Test Date	Hours Tested	Test Production	Oil BBL	Gas MCF	Water BBL	Oil Gravity Corr. API	Gas Gravity	Production Method
08/19/2018	08/22/2018	24	→	2683.0	6208.0	8861.0	40.0		FLows FROM WELL
Choke Size	Tbg. Press. Flwg. SI	Csg. Press.	24 Hr. Rate	Oil BBL	Gas MCF	Water BBL	Gas:Oil Ratio	Well Status	
52	SI	2390.0	→	2683	6208	8861	2314	POW	

28a. Production - Interval B

Date First Produced	Test Date	Hours Tested	Test Production	Oil BBL	Gas MCF	Water BBL	Oil Gravity Corr. API	Gas Gravity	Production Method
			→						
Choke Size	Tbg. Press. Flwg. SI	Csg. Press.	24 Hr. Rate	Oil BBL	Gas MCF	Water BBL	Gas:Oil Ratio	Well Status	
	SI		→						

ACCEPTED FOR RECORD
OCT 16 2013
Dinah Agueto
BUREAU OF LAND MANAGEMENT
CARLSBAD FIELD OFFICE

(See Instructions and spaces for additional data on reverse side)

ELECTRONIC SUBMISSION #433207 VERIFIED BY THE BLM WELL INFORMATION SYSTEM

**** BLM REVISED ** BLM REVISED ** BLM REVISED ** BLM REVISED ** BLM REVISED ****

Reclamation Due's 2/19/2019

28b. Production - Interval C

Date First Produced	Test Date	Hours Tested	Test Production	Oil BBL	Gas MCF	Water BBL	Oil Gravity Corr. API	Gas Gravity	Production Method
			→						
Choke Size	Tbg. Press. Flwg. SI	Csg. Press.	24 Hr. Rate	Oil BBL	Gas MCF	Water BBL	Gas:Oil Ratio	Well Status	
			→						

28c. Production - Interval D

Date First Produced	Test Date	Hours Tested	Test Production	Oil BBL	Gas MCF	Water BBL	Oil Gravity Corr. API	Gas Gravity	Production Method
			→						
Choke Size	Tbg. Press. Flwg. SI	Csg. Press.	24 Hr. Rate	Oil BBL	Gas MCF	Water BBL	Gas:Oil Ratio	Well Status	
			→						

29. Disposition of Gas(Sold, used for fuel, vented, etc.)
SOLD

30. Summary of Porous Zones (Include Aquifers):

Show all important zones of porosity and contents thereof: Cored intervals and all drill-stem tests, including depth interval tested, cushion used, time tool open, flowing and shut-in pressures and recoveries.

31. Formation (Log) Markers

Formation	Top	Bottom	Descriptions, Contents, etc.	Name	Top
					Meas. Depth
RUSTLER	1125		BARREN	RUSTLER	1125
TOP OF SALT	1630		BARREN	TOP OF SALT	1630
BASE OF SALT	4800		BARREN	BASE OF SALT	4800
BRUSHY CANYON	7647		OIL & GAS	BRUSHY CANYON	7647
BONE SPRING 1ST	10168		OIL & GAS	BONE SPRING 1ST	10168
BONE SPRING 2ND	10727		OIL & GAS	BONE SPRING 2ND	10727
BONE SPRING 3RD	11814		OI & GAS	BONE SPRING 3RD	11814
WOLFCAMP	12272		OIL & GAS	WOLFCAMP	12272

32. Additional remarks (include plugging procedure):

PLEASE REFERENCE ATTACHMENTS

PLEASE NOTE POOL CHANGE - BOBCAT DRAW; UPPER WOLFCAMP

RAN CEMENT BOND LOG - TOC OF CEMENT FOR 5 1/2" CSG WAS @ 7530', DETERMINED BY CBL

33. Circle enclosed attachments:

- | | | | |
|---|--------------------|---------------|-----------------------|
| 1. Electrical/Mechanical Logs (1 full set req'd.) | 2. Geologic Report | 3. DST Report | 4. Directional Survey |
| 5. Sundry Notice for plugging and cement verification | 6. Core Analysis | 7. Other: | |

34. I hereby certify that the foregoing and attached information is complete and correct as determined from all available records (see attached instructions):

Electronic Submission #433207 Verified by the BLM Well Information System.

For EOG RESOURCES INC, sent to the Hobbs

Committed to AFMSS for processing by DUNCAN WHITLOCK on 09/06/2018 (18DW0257SE)

Name (please print) KAY MADDOX

Title REGULATORY SPECIALIST

Signature _____ (Electronic Submission)

Date 08/29/2018

Title 18 U.S.C. Section 1001 and Title 43 U.S.C. Section 1212, make it a crime for any person knowingly and willfully to make to any department or agency of the United States any false, fictitious or fraudulent statements or representations as to any matter within its jurisdiction.

**** REVISED ** REVISED ** REVISED ** REVISED ** REVISED ** REVISED ** REVISED ** REVISED ****

District I
1625 N French Dr., Hobbs, NM 88240
Phone: (575) 393-6161 Fax (575) 393-0720
District II
811 S. First St., Artesia, NM 88210
Phone: (575) 748-1283 Fax (575) 748-9720
District III
1000 Rio Brazos Road, Aztec, NM 87410
Phone: (505) 334-6178 Fax (505) 334-6170
District IV
1220 S. St. Francis Dr., Santa Fe, NM 87505
Phone: (505) 476-3460 Fax (505) 476-3462

State of New Mexico
Energy, Minerals & Natural Resources
Department
OIL CONSERVATION DIVISION
1220 South St. Francis Dr.
Santa Fe, NM 87505

FORM C-102
Revised August 1, 2011
Submit one copy to appropriate
District Office

☒ AMENDED REPORT

WELL LOCATION AND ACREAGE DEDICATION PLAT

¹ API Number 30-025-43876	² Pool Code 98094	³ Pool Name Bobcat Draw; Upper Wolfcamp
⁴ Property Code 38481	⁵ Property Name CABALLO 23 FED COM	⁶ Well Number #702H
⁷ GRID No. 7377	⁸ Operator Name EOG RESOURCES, INC.	⁹ Elevation 3342'

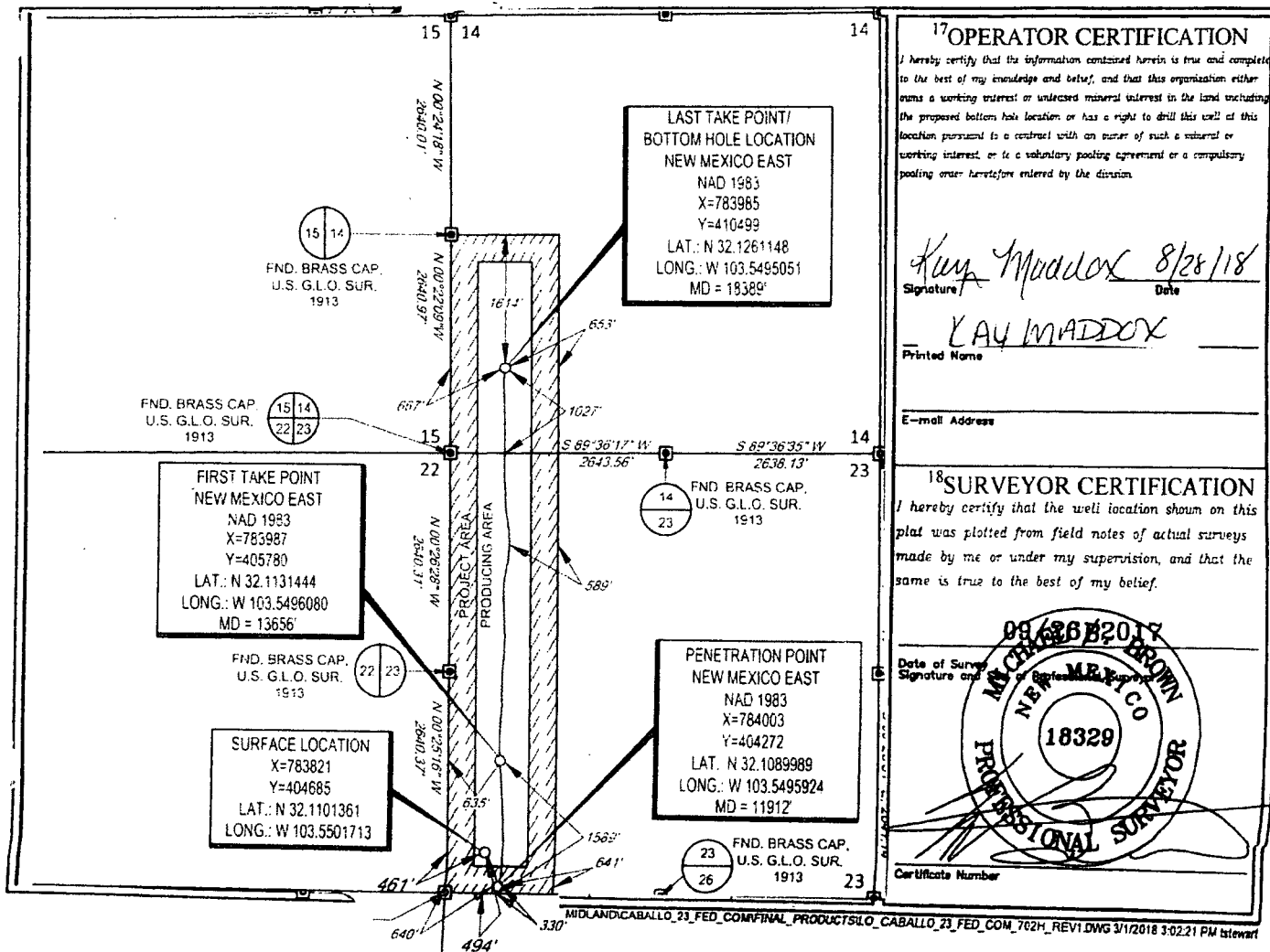
¹⁰Surface Location

UL or lot no.	Section	Township	Range	Lot Idn	Feet from the	North/South line	Feet from the	East/West line	County
M	23	25-S	33-E	-	494'	SOUTH	461'	WEST	LEA

UL or lot no.	Section	Township	Range	Lot Idn	Feet from the	North/South line	Feet from the	East/West line	County
M	14	25-S	33-E	-	1027'	SOUTH	667'	WEST	LEA

¹¹ Dedicated Acres 240.00	¹² Joint or Infill	¹³ Consolidation Code	¹⁴ Order No.
---	-------------------------------	----------------------------------	-------------------------

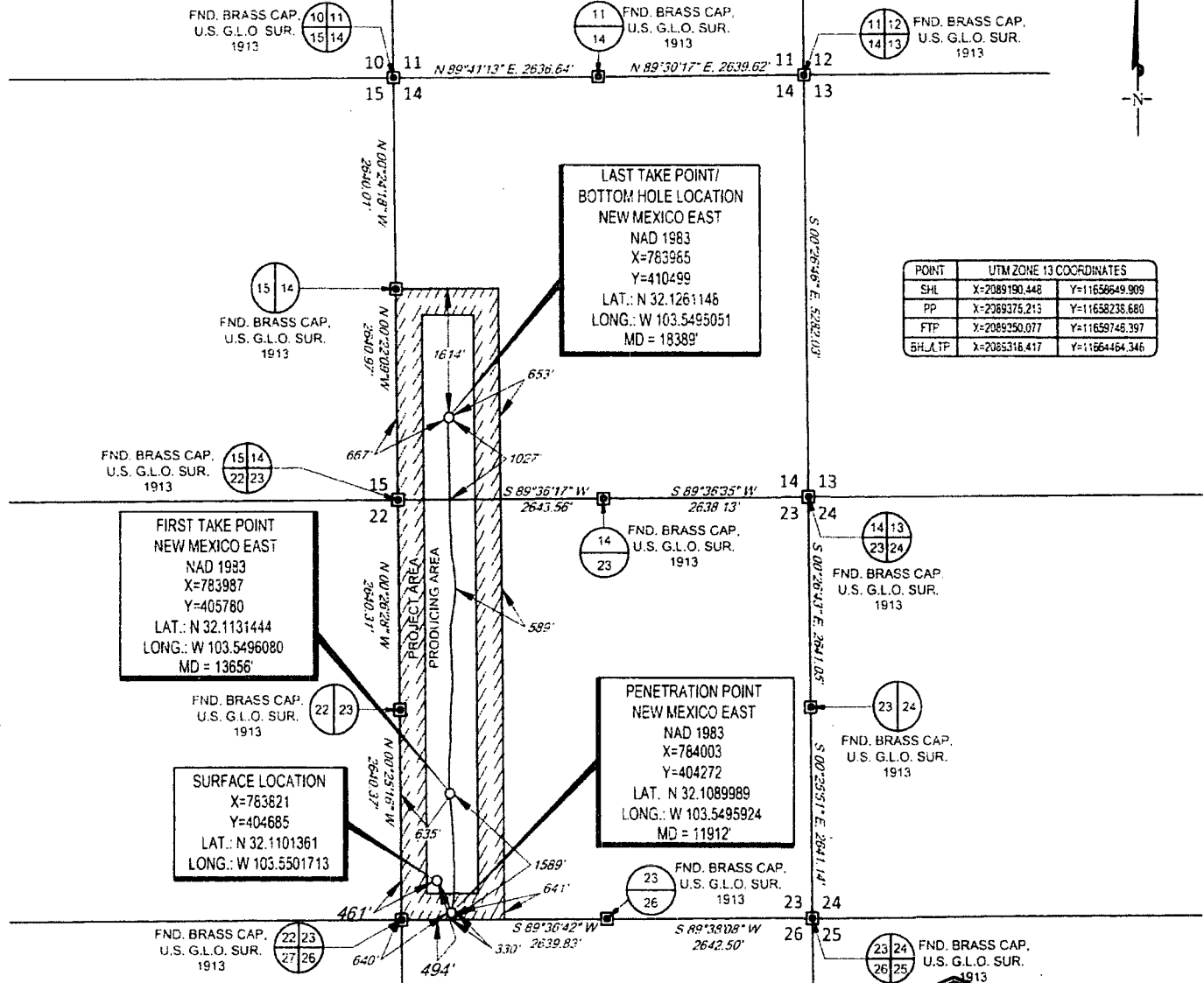
No allowable will be assigned to this completion until all interests have been consolidated or a non-standard unit has been approved by the division.



SCALE: 1" = 2000'

0' 1000' 2000'

SECTION 14 & 23, TOWNSHIP 25-S, RANGE 33-E, N.M.P.M.
LEA COUNTY, NEW MEXICO



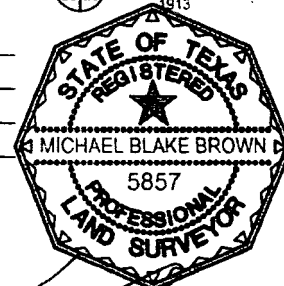
POINT	UTM ZONE 13 COORDINATES
SHL	X=2089190.448 Y=11658649.909
PP	X=2089375.215 Y=11658238.680
FTP	X=2089250.077 Y=11659748.397
BH/LTP	X=2085318.417 Y=11664464.346

LEASE NAME & WELL NO.: CABALLO 23 FED COM #702H

SECTION 14 & 23 TWP 25-S RGE 33-E SURVEY N.M.P.M.

COUNTY LEA STATE NM ELEVATION 3342'

DESCRIPTION 494' FSL & 461' FWL



Michael Blake Brown, P.S. No. 18329

AUGUST 16, 2018



TOPOGRAPHIC
LOYALTY INNOVATION LEGACY

1400 EVERMAN PARKWAY, Ste. 146 • FT. WORTH, TEXAS 76140
TELEPHONE: (817) 744-7512 • FAX (617) 744-7554
2903 NORTH BIG SPRING • MIDLAND, TEXAS 79705
TELEPHONE (432) 682-1653 OR (806) 767-1653 • FAX (432) 682-1743
WWW.TOPOGRAPHIC.COM

Geog resources, Inc.

CABALLO 23 FED COM #702H AS-COMPLETED	REVISION:
DATE: 08/16/2018	
FILE: AD_CABALLO_23_FED_COM_702H	
DRAWN BY: A.M.D.	
SHEET: 1 OF 1	

- NOTES:
1. ORIGINAL DOCUMENT SIZE 8.5" X 11"
 2. ALL BEARINGS, DISTANCES, AND COORDINATE VALUES CONTAINED HEREIN ARE GRID BASED UPON THE NEW MEXICO COORDINATE SYSTEM OF 1983, EAST ZONE, U.S. SURVEY FEET.
 3. THIS WELL LOCATION SHOWN HEREON HAS BEEN SURVEYED ON THE GROUND UNDER MY SUPERVISION AND PREPARED ACCORDING TO THE EVIDENCE FOUND AT THE TIME OF SURVEY, AND DATA PROVIDED BY EOG RESOURCES, INC. THIS CERTIFICATION IS MADE AND LIMITED TO THOSE PERSONS OR ENTITIES SHOWN ON THE FACE OF THIS PLAT AND IS NON-TRANSFERABLE. THIS SURVEY IS CERTIFIED FOR THIS TRANSACTION ONLY.