

District I
625 N. French Dr., Hobbs, NM 88240
Phone: (575) 393-6161 Fax: (575) 393-0720
District II
811 S. First St., Artesia, NM 88210
Phone: (575) 748-1283 Fax: (575) 748-9720
District III
1000 Rio Brazos Road, Aztec, NM 87410
Phone: (505) 334-6178 Fax: (505) 334-6170
District IV
1220 S. St. Francis Dr., Santa Fe, NM 87505
Phone: (505) 476-3460 Fax: (505) 476-3462

State of New Mexico
Energy, Minerals & Natural Resources
Department
OIL CONSERVATION DIVISION
1220 South St. Francis Dr.
Santa Fe, NM 87505

HOBBS OCD
NOV 20 2018
RECEIVED

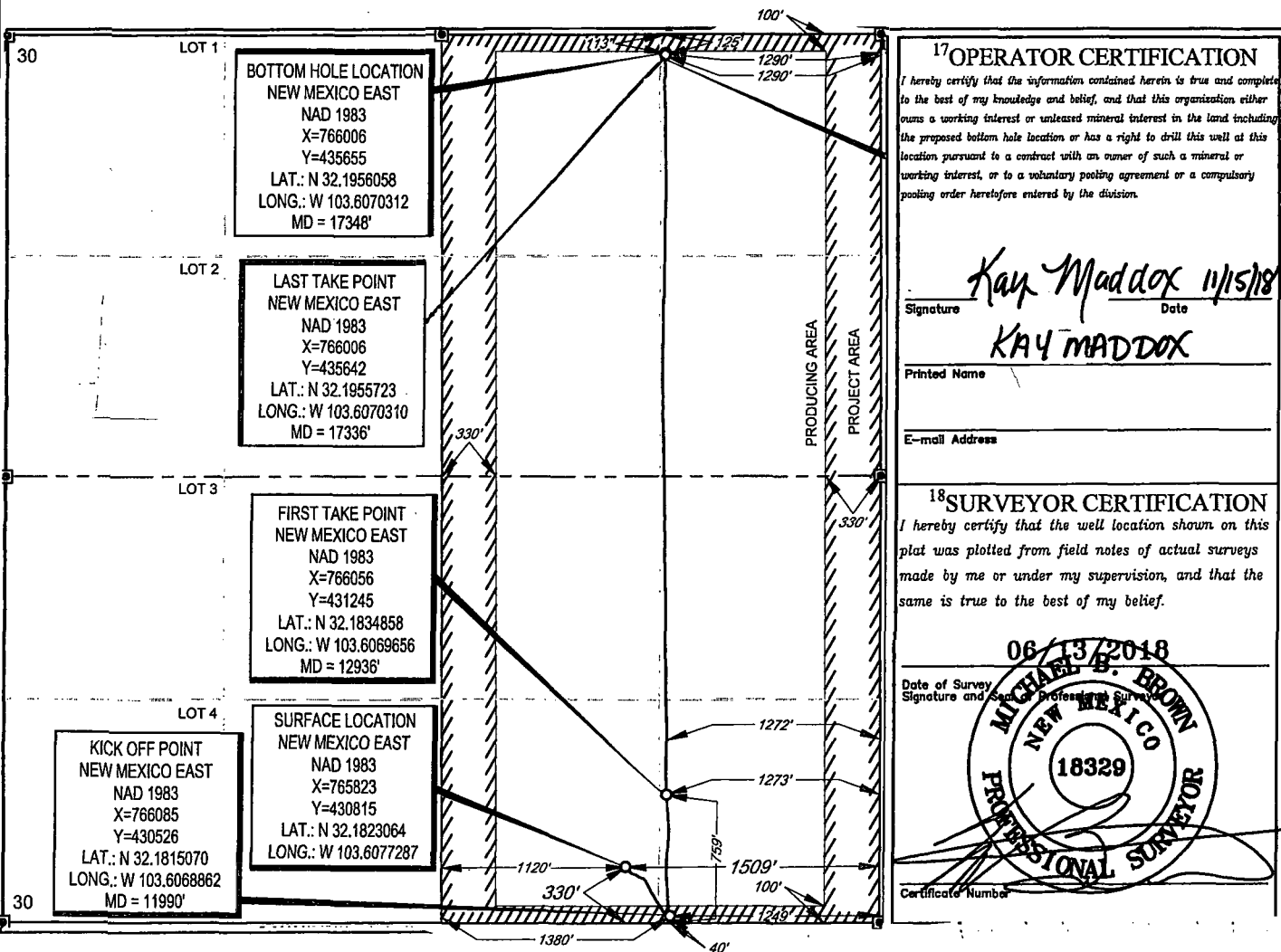
FORM C-102
Revised August 1, 2011
Submit one copy to appropriate
District Office

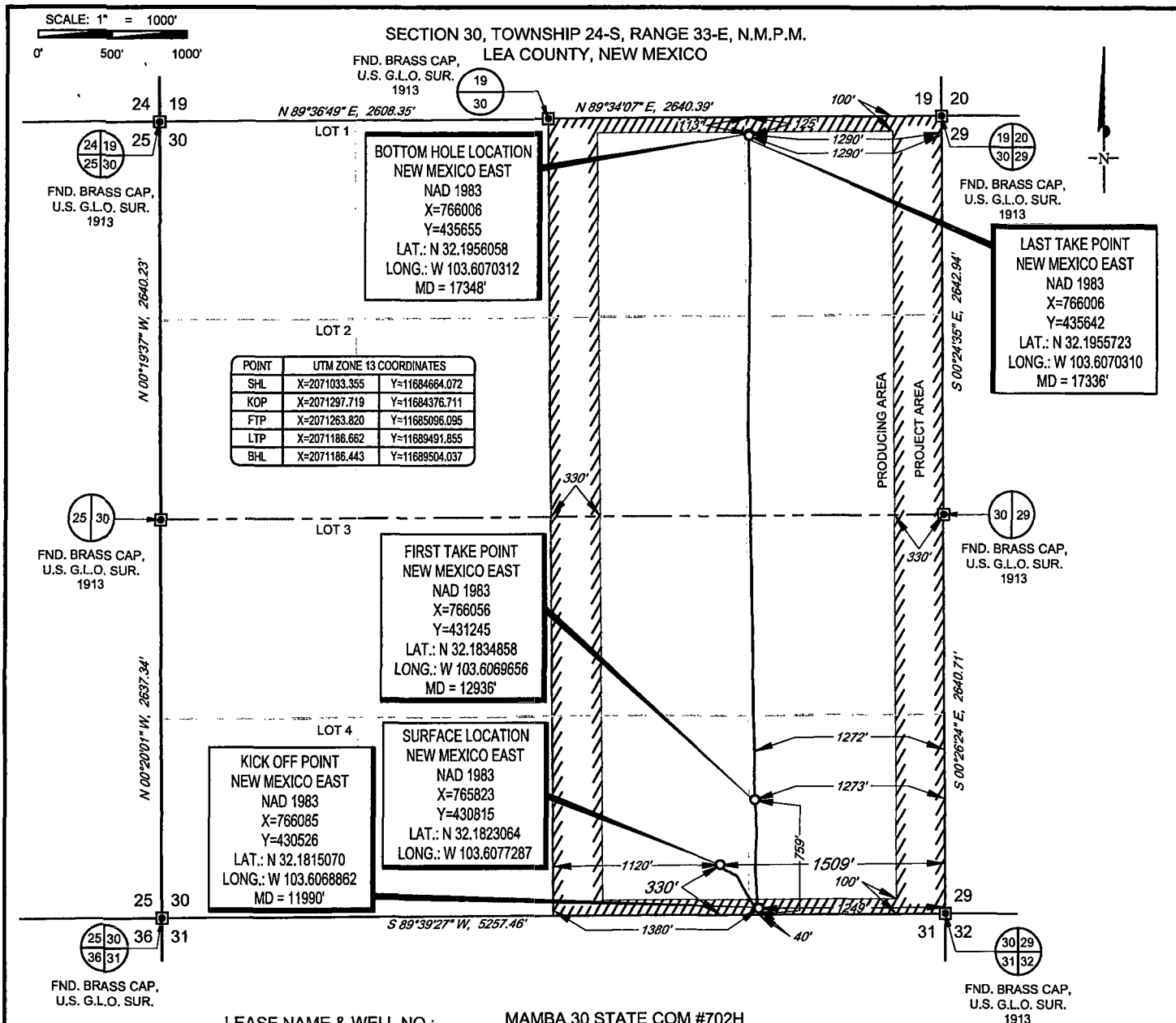
☐ AMENDED REPORT

WELL LOCATION AND ACREAGE DEDICATION PLAT

¹ API Number 30-025-44959		² Pool Code 98092		³ Pool Name WC-025 G-09 S243336I; Upper Wolfcamp	
⁴ Property Code 319634		⁵ Property Name MAMBA 30 STATE COM			⁶ Well Number #702H
⁷ OGRID No. 7377		⁸ Operator Name EOG RESOURCES, INC.			⁹ Elevation 3538'
¹⁰ Surface Location					
UL or lot no. 0	Section 30	Township 24-S	Range 33-E	Lot Idn -	Feet from the 330'
		North/South line SOUTH		Feet from the 1509'	East/West line EAST
				County LEA	
UL or lot no. A	Section 30	Township 24-S	Range 33-E	Lot Idn -	Feet from the 113'
		North/South line NORTH		Feet from the 1290'	East/West line EAST
				County LEA	
¹¹ Dedicated Acres 160.00		¹² Joint or Infill		¹³ Consolidation Code	
				¹⁴ Order No.	

No allowable will be assigned to this completion until all interests have been consolidated or a non-standard unit has been approved by the division.

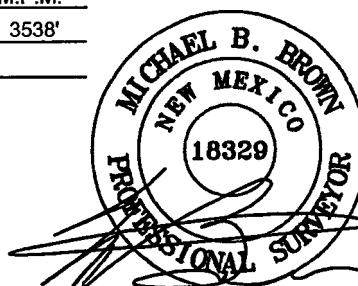




EOG resources, Inc.

TOPOGRAPHIC
LOYALTY INNOVATION LEGACY

1400 EVERMAN PARKWAY, Ste. 146 • FT. WORTH, TEXAS 76140
TELEPHONE: (817) 744-7512 • FAX (817) 744-7554
2903 NORTH BIG SPRING • MIDLAND, TEXAS 79705
TELEPHONE: (432) 682-1653 OR (800) 767-1653 • FAX (432) 682-1743
WWW.TOPOGRAPHIC.COM



Michael Blake Brown, P.S. No. 18329
November 6, 2018

MAMBA 30 STATE COM #702H AS-DRILLED	REVISION:		NOTES: 1. ORIGINAL DOCUMENT SIZE: 8.5" X 11" 2. ALL BEARINGS, DISTANCES, AND COORDINATE VALUES CONTAINED HEREIN ARE GRID BASED UPON THE NEW MEXICO COORDINATE SYSTEM OF 1983, EAST ZONE, U.S. SURVEY FEET. 3. THIS WELL LOCATION SHOWN HEREON HAS BEEN SURVEYED ON THE GROUND UNDER MY SUPERVISION AND PREPARED ACCORDING TO THE EVIDENCE FOUND AT THE TIME OF SURVEY, AND DATA PROVIDED BY EOG RESOURCES, INC. THIS CERTIFICATION IS MADE AND LIMITED TO THOSE PERSONS OR ENTITIES SHOWN ON THE FACE OF THIS PLAT AND IS NON-TRANSFERABLE. THIS SURVEY IS CERTIFIED FOR THIS TRANSACTION ONLY.
DATE:	11/06/18		
FILE:	AD_MAMBA_30_STATE_COM_702H		
DRAWN BY:	MML		
SHEET:	1 OF 1		