

District I
1625 N. French Dr., Hobbs, NM 88240
Phone: (575) 393-6161 Fax: (575) 393-0720
District II
811 S. First St., Artesia, NM 88210
Phone: (575) 748-1283 Fax: (575) 748-9720
District III
1000 Rio Brazos Road, Aztec, NM 87410
Phone: (505) 334-6178 Fax: (505) 334-6170
District IV
1220 S. St. Francis Dr., Santa Fe, NM 87505
Phone: (505) 476-3460 Fax: (505) 476-3462

State of New Mexico
Energy, Minerals & Natural Resources
Department
OIL CONSERVATION DIVISION
1220 South St. Francis Dr.
Santa Fe, NM 87505

NM OIL CONSERVATION

ARTESIA DISTRICT

FORM C-102

Revised August 1, 2011

DEC 10 2018 Submit one copy to appropriate

District Office

RECEIVED

☐ AMENDED REPORT

WELL LOCATION AND ACREAGE DEDICATION PLAT

¹ API Number 30-025-44442	² Pool Code 98135	³ Pool Name WC-025 G-09 S243310P; UPPER WOLFCAMP
⁴ Property Code 320710	⁵ Property Name STRONG 14-24S-33E AR	⁶ Well Number #214H
⁷ OGRID No. 228937	⁸ Operator Name MATADOR PRODUCTION COMPANY	⁹ Elevation 3603'

¹⁰Surface Location

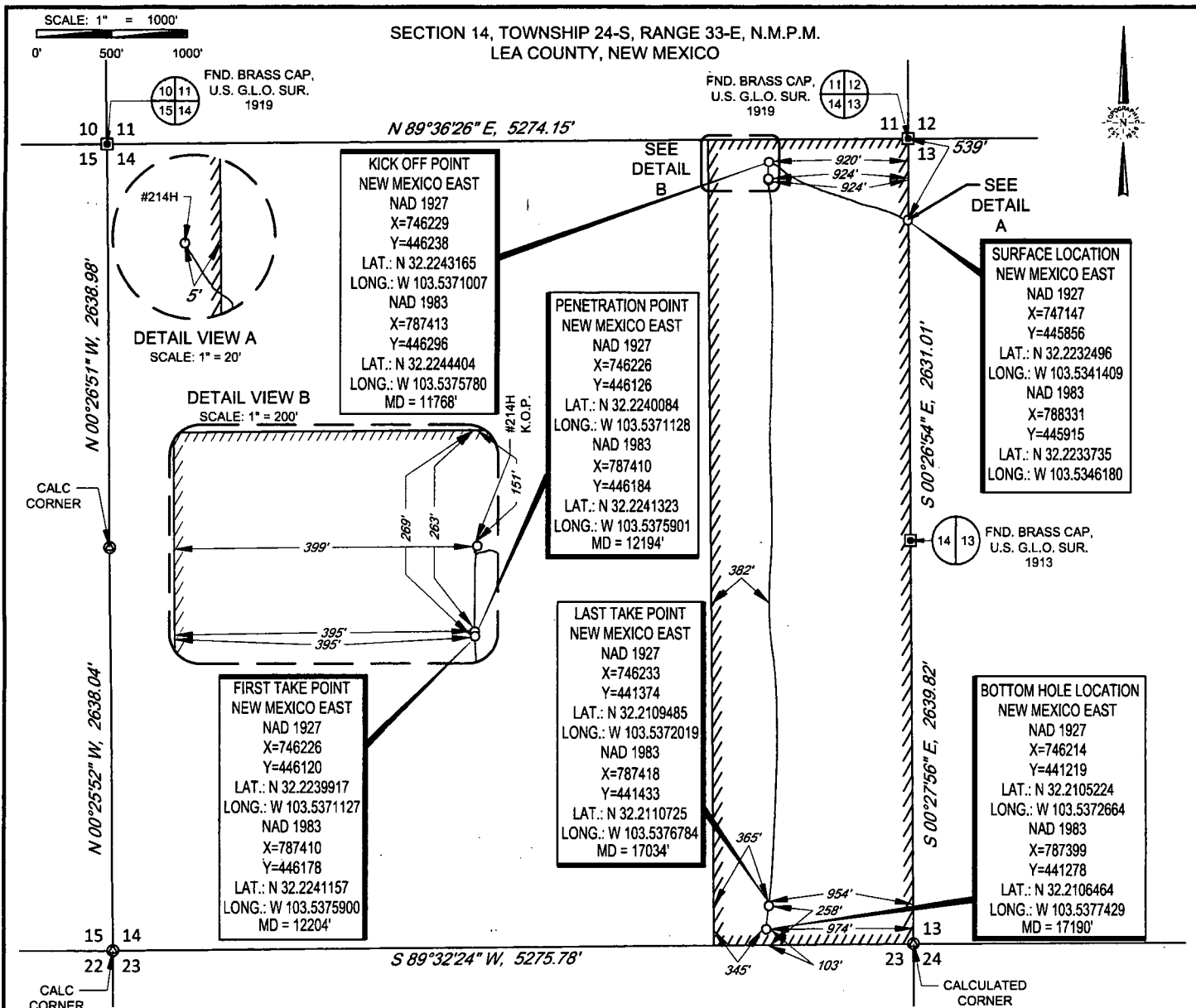
UL or lot no.	Section	Township	Range	Lot Idn	Feet from the	North/South line	Feet from the	East/West line	County
A	14	24-S	33-E	-	539'	NORTH	5'	EAST	LEA

UL or lot no.	Section	Township	Range	Lot Idn	Feet from the	North/South line	Feet from the	East/West line	County
P	14	24-S	33-E	-	103'	SOUTH	974'	EAST	LEA

¹² Dedicated Acres 160	¹³ Joint or Infill	¹⁴ Consolidation Code	¹⁵ Order No.
--------------------------------------	-------------------------------	----------------------------------	-------------------------

No allowable will be assigned to this completion until all interests have been consolidated or a non-standard unit has been approved by the division.

<p>¹⁶</p> <p>DETAIL VIEW A SCALE: 1" = 20'</p> <p>DETAIL VIEW B SCALE: 1" = 200'</p> <p>KICK OFF POINT NEW MEXICO EAST NAD 1927 X=746229 Y=446238 LAT.: N 32.2243165 LONG.: W 103.5371007 NAD 1983 X=787413 Y=446296 LAT.: N 32.2244404 LONG.: W 103.5375780 MD = 11768'</p> <p>PENETRATION POINT NEW MEXICO EAST NAD 1927 X=746226 Y=446126 LAT.: N 32.2240084 LONG.: W 103.5371128 NAD 1983 X=787410 Y=446184 LAT.: N 32.2241323 LONG.: W 103.5375901 MD = 12194'</p> <p>SURFACE LOCATION NEW MEXICO EAST NAD 1927 X=747147 Y=445856 LAT.: N 32.2232496 LONG.: W 103.5341409 NAD 1983 X=788331 Y=445915 LAT.: N 32.2233735 LONG.: W 103.5346180</p> <p>FIRST TAKE POINT NEW MEXICO EAST NAD 1927 X=746226 Y=446120 LAT.: N 32.2239917 LONG.: W 103.5371127 NAD 1983 X=787410 Y=446178 LAT.: N 32.2241157 LONG.: W 103.5375900 MD = 12204'</p> <p>LAST TAKE POINT NEW MEXICO EAST NAD 1927 X=746233 Y=441374 LAT.: N 32.2109485 LONG.: W 103.5372019 NAD 1983 X=787418 Y=441433 LAT.: N 32.2110725 LONG.: W 103.5376784 MD = 17034'</p> <p>BOTTOM HOLE LOCATION NEW MEXICO EAST NAD 1927 X=746214 Y=441219 LAT.: N 32.2105224 LONG.: W 103.5372664 NAD 1983 X=787399 Y=441278 LAT.: N 32.2106464 LONG.: W 103.5377429 MD = 17191'</p>	<p>¹⁷OPERATOR CERTIFICATION</p> <p>I hereby certify that the information contained herein is true and complete to the best of my knowledge and belief, and that this organization either owns a working interest or unleased mineral interest in the land including the proposed bottom hole location or has a right to drill this well at this location pursuant to a contract with an owner of such a mineral or working interest, or to a voluntary pooling agreement or a compulsory pooling order heretofore entered by the division.</p> <p><i>Chris Carleton</i> Signature Date 10/24/18</p> <p>Chris Carleton Printed Name ccarleton@matadorresources.com E-mail Address</p> <p>¹⁸SURVEYOR CERTIFICATION</p> <p>I hereby certify that the well location shown on this plat was plotted from field notes of actual surveys made by me or under my supervision, and that the same is true to the best of my belief.</p> <p>02/01/2018 Date of Survey Signature and Seal of Professional Surveyor MICHAEL B. BROWN NEW MEXICO 18329 PROFESSIONAL SURVEYOR</p> <p>Certificate Number</p>
---	--



LEASE NAME & WELL NO.: STRONG 14-24S-33E AR #214H

SECTION 14 TWP 24-S RGE 33-E SURVEY N.M.P.M.

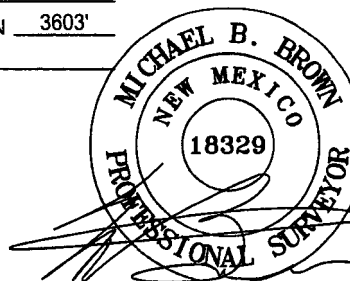
COUNTY LEA STATE NM ELEVATION 3603'

DESCRIPTION 539' FNL & 5' FEL



TOPOGRAPHIC
LOYALTY INNOVATION LEGACY

1400 EVERMAN PARKWAY, Ste. 146 • FT. WORTH, TEXAS 76140
TELEPHONE: (817) 744-7512 • FAX (817) 744-7554
2903 NORTH BIG SPRING • MIDLAND, TEXAS 79705
TELEPHONE: (432) 682-1653 OR (800) 787-1653 • FAX (432) 682-1743
WWW.TOPOGRAPHIC.COM



Michael Blake Brown, P.S. No. 18329
OCTOBER 19, 2018

STRONG 14-24S-33E AR
#214H (AS-COMPLETED)

REVISION:

DATE: 10/19/18

FILE: AD_STRONG_14-24S-33E_AR_214H

DRAWN BY: A.M.D.

SHEET: 1 OF 1

NOTES:

1. ORIGINAL DOCUMENT SIZE: 8.5" X 11"
2. ALL BEARINGS, DISTANCES, AND COORDINATE VALUES CONTAINED HEREIN ARE GRID BASED UPON THE NEW MEXICO COORDINATE SYSTEM OF 1983, EAST ZONE, U.S. SURVEY FEET.
3. THIS WELL LOCATION SHOWN HEREON HAS BEEN SURVEYED ON THE GROUND UNDER MY SUPERVISION AND PREPARED ACCORDING TO THE EVIDENCE FOUND AT THE TIME OF SURVEY, AND DATA PROVIDED BY EOG RESOURCES, INC. THIS CERTIFICATION IS MADE AND LIMITED TO THOSE PERSONS OR ENTITIES SHOWN ON THE FACE OF THIS PLAT AND IS NON-TRANSFERABLE. THIS SURVEY IS CERTIFIED FOR THIS TRANSACTION ONLY.