

District I  
1625 N. French Dr., Hobbs, NM 88240  
Phone: (575) 393-6161 Fax: (575) 393-0720  
District II  
811 S. First St., Artesia, NM 88210  
Phone: (575) 748-1283 Fax: (575) 748-9720  
District III  
1000 Rio Brazos Road, Aztec, NM 87410  
Phone: (505) 334-6178 Fax: (505) 334-6170  
District IV  
1220 S. St. Francis Dr., Santa Fe, NM 87505  
Phone: (505) 476-3460 Fax: (505) 476-3462

State of New Mexico  
Energy, Minerals & Natural Resources  
Department  
OIL CONSERVATION DIVISION  
1220 South St. Francis Dr.  
Santa Fe, NM 87505

**HOBBS OCD**

DEC 18 2018

**RECEIVED**

FORM C-102  
Revised August 1, 2011  
Submit one copy to appropriate  
District Office

AMENDED REPORT

**WELL LOCATION AND ACREAGE DEDICATION PLAT**

<sup>1</sup> API Number <b>30-025-44972</b>	<sup>2</sup> Pool Code <b>97964</b>	<sup>3</sup> Pool Name <b>WC-025 G-07 S243225C; Lower Bone Spring</b>
<sup>4</sup> Property Code <b>321651</b>	<sup>5</sup> Property Name <b>SAVAGE 2 STATE COM</b>	
<sup>7</sup> OGRID No. <b>7377</b>	<sup>8</sup> Operator Name <b>EOG RESOURCES, INC.</b>	<sup>6</sup> Well Number <b>#201H</b>
		<sup>9</sup> Elevation <b>3513'</b>

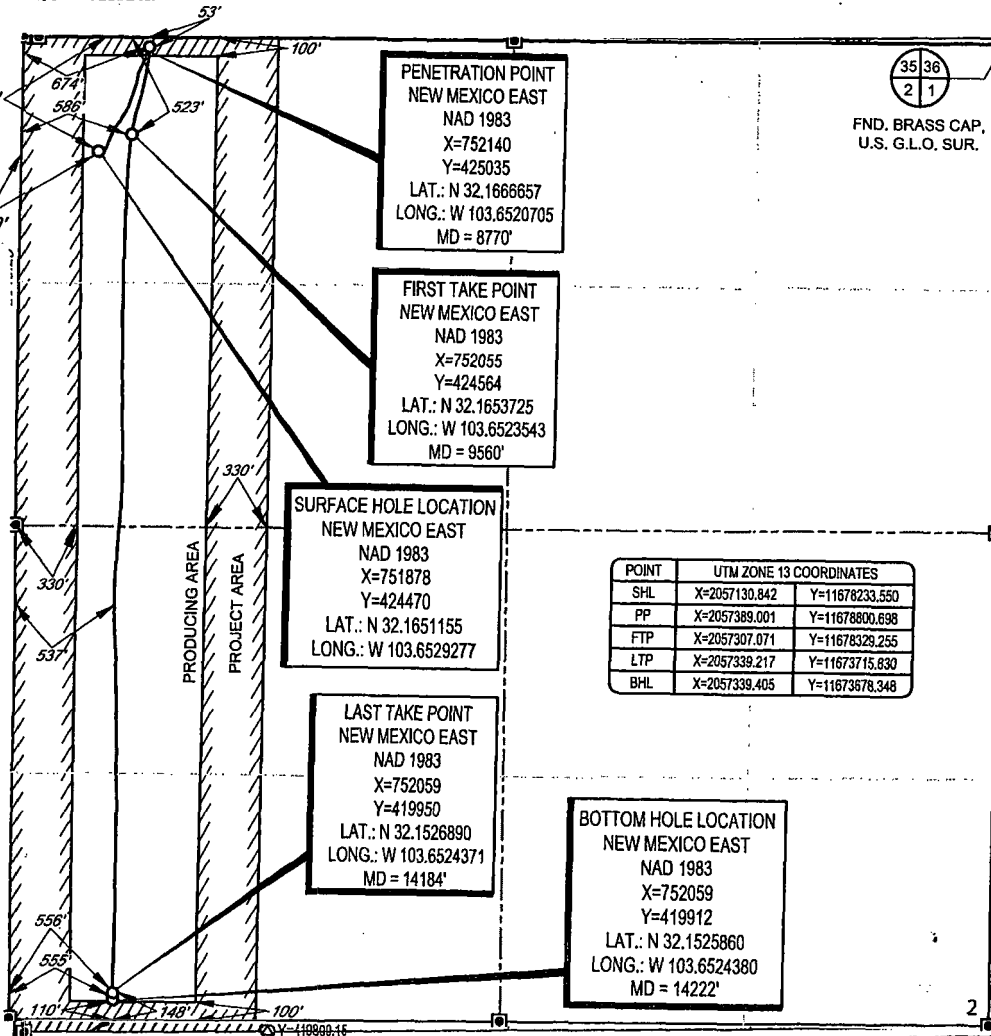
<sup>10</sup>Surface Location

UL or lot no.	Section	Township	Range	Lot Idn	Feet from the	North/South line	Feet from the	East/West line	County
<b>4</b>	<b>2</b>	<b>25-S</b>	<b>32-E</b>	<b>-</b>	<b>616'</b>	<b>NORTH</b>	<b>408'</b>	<b>WEST</b>	<b>LEA</b>

UL or lot no.	Section	Township	Range	Lot Idn	Feet from the	North/South line	Feet from the	East/West line	County
<b>M</b>	<b>2</b>	<b>25-S</b>	<b>32-E</b>	<b>-</b>	<b>110'</b>	<b>SOUTH</b>	<b>555'</b>	<b>WEST</b>	<b>LEA</b>

<sup>12</sup> Dedicated Acres <b>160.10</b>	<sup>13</sup> Joint or Infill	<sup>14</sup> Consolidation Code	<sup>15</sup> Order No.
--	-------------------------------	----------------------------------	-------------------------

No allowable will be assigned to this completion until all interests have been consolidated or a non-standard unit has been approved by the division.



35 36  
2 1  
FND. BRASS CAP,  
U.S. G.L.O. SUR.

<sup>17</sup>OPERATOR CERTIFICATION

I hereby certify that the information contained herein is true and complete to the best of my knowledge and belief, and that this organization either owns a working interest or unleased mineral interest in the land including the proposed bottom hole location or has a right to drill this well at this location pursuant to a contract with an owner of such a mineral or working interest, or to a voluntary pooling agreement or a compulsory pooling order heretofore entered by the division.

*Kay Maddox* 12/14/18  
Signature Date

**KAY MADDOX**  
Printed Name

E-mail Address

<sup>18</sup>SURVEYOR CERTIFICATION

I hereby certify that the well location shown on this plat was plotted from field notes of actual surveys made by me or under my supervision, and that the same is true to the best of my belief.

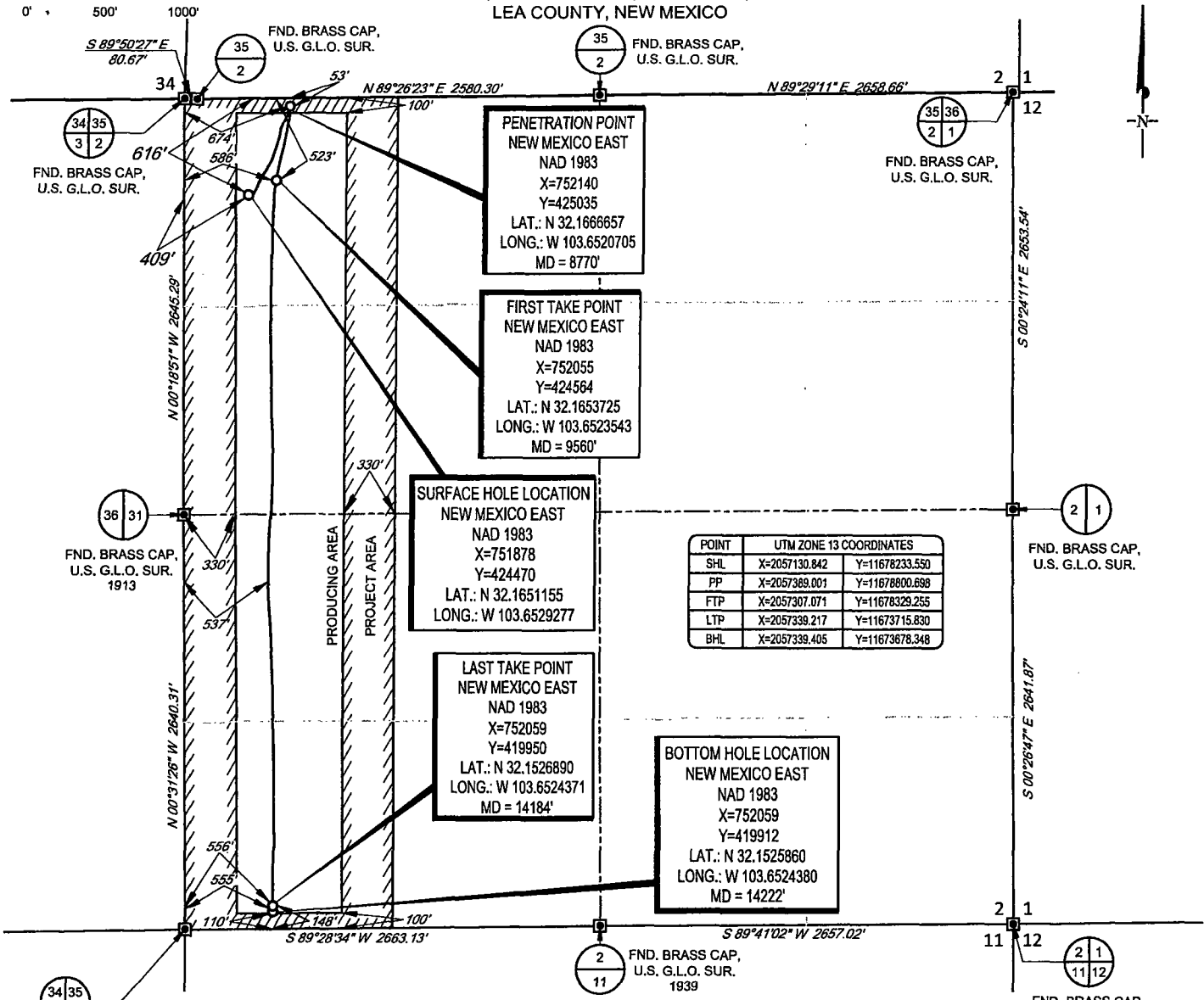
06/19/2018  
Date of Survey  
*Michael B. Brown*  
Signature and Professional Seal

**MICHAEL B. BROWN**  
NEW MEXICO  
18329  
PROFESSIONAL SURVEYOR

Certificate Number

SCALE: 1" = 1000'

SECTION 2, TOWNSHIP 25-S, RANGE 32-E, N.M.P.M.  
LEA COUNTY, NEW MEXICO



**PENETRATION POINT**  
NEW MEXICO EAST  
NAD 1983  
X=752140  
Y=425035  
LAT.: N 32.1666657  
LONG.: W 103.6520705  
MD = 8770'

**FIRST TAKE POINT**  
NEW MEXICO EAST  
NAD 1983  
X=752055  
Y=424584  
LAT.: N 32.1653725  
LONG.: W 103.6523543  
MD = 9560'

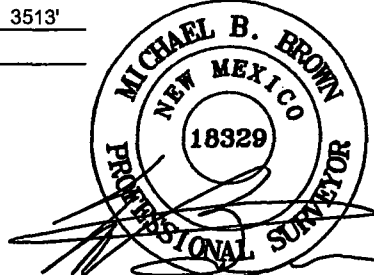
**SURFACE HOLE LOCATION**  
NEW MEXICO EAST  
NAD 1983  
X=751878  
Y=424470  
LAT.: N 32.1651155  
LONG.: W 103.6529277

**LAST TAKE POINT**  
NEW MEXICO EAST  
NAD 1983  
X=752059  
Y=419950  
LAT.: N 32.1526890  
LONG.: W 103.6524371  
MD = 14184'

**BOTTOM HOLE LOCATION**  
NEW MEXICO EAST  
NAD 1983  
X=752059  
Y=419912  
LAT.: N 32.1525860  
LONG.: W 103.6524380  
MD = 14222'

POINT	UTM ZONE 13 COORDINATES	
SHL	X=2057130.842	Y=11678233.550
PP	X=2057389.001	Y=11678800.698
FTP	X=2057307.071	Y=11678329.255
LTP	X=2057339.217	Y=11673715.830
BHL	X=2057339.405	Y=11673678.348

LEASE NAME & WELL NO.: SAVAGE 2 STATE COM #201H  
SECTION 2 TWP 25-S RGE 32-E SURVEY N.M.P.M.  
COUNTY LEA STATE NM ELEVATION 3513'  
DESCRIPTION 616' FNL & 409' FWL



Michael Blake Brown, P.S. No. 18329  
NOVEMBER 21, 2018



**TOPOGRAPHIC**  
LOYALTY INNOVATION LEGACY  
1400 EVERMAN PARKWAY, Ste. 146 • FT. WORTH, TEXAS 76140  
TELEPHONE: (817) 744-7512 • FAX (817) 744-7554  
2903 NORTH BIG SPRING • MIDLAND, TEXAS 79705  
TELEPHONE: (432) 682-1653 OR (800) 767-1653 • FAX (432) 682-1743  
WWW.TOPOGRAPHIC.COM

SAVAGE 2 STATE COM #201H AS-COMPLETED	REVISION:
DATE: 11/21/18	
FILE:AD_SAVAGE_2_STATE_COM_201H	
DRAWN BY: AMD	
SHEET: 1 OF 1	

NOTES:  
1. ORIGINAL DOCUMENT SIZE: 8.5" X 11"  
2. ALL BEARINGS, DISTANCES, AND COORDINATE VALUES CONTAINED HEREIN ARE GRID BASED UPON THE NEW MEXICO COORDINATE SYSTEM OF 1983, EAST ZONE, U.S. SURVEY FEET.  
3. THIS WELL LOCATION SHOWN HEREON HAS BEEN SURVEYED ON THE GROUND UNDER MY SUPERVISION AND PREPARED ACCORDING TO THE EVIDENCE FOUND AT THE TIME OF SURVEY, AND DATA PROVIDED BY EOG RESOURCES, INC. THIS CERTIFICATION IS MADE AND LIMITED TO THOSE PERSONS OR ENTITIES SHOWN ON THE FACE OF THIS PLAT AND IS NON-TRANSFERABLE. THIS SURVEY IS CERTIFIED FOR THIS TRANSACTION ONLY.