

District I - (575) 393-6161
1625 N. French Dr., Hobbs, NM 88240
District II - (575) 748-1283
811 S. First St., Artesia, NM 88210
District III - (505) 334-6178
1000 Rio Brazos Rd., Aztec, NM 87410
District IV - (505) 476-3460
1220 S. St. Francis Dr., Santa Fe, NM 87505

State of New Mexico
Energy, Minerals and Natural Resources

OIL CONSERVATION DIVISION
1220 South St. Francis Dr.
Santa Fe, NM 87505

Form C-103

Revised August 1, 2011

<p>SUNDRY NOTICES AND REPORTS ON WELLS (DO NOT USE THIS FORM FOR PROPOSALS TO DRILL OR TO DEEPEN OR PLUG BACK TO A DIFFERENT RESERVOIR. USE "APPLICATION FOR PERMIT" (FORM C-101) FOR SUCH PROPOSALS.)</p>		<p>WELL API NO. 30-025-31454</p>
<p>1. Type of Well: Oil Well <input checked="" type="checkbox"/> Gas Well <input type="checkbox"/> Other <input type="checkbox"/></p>		<p>5. Indicate Type of Lease STATE <input checked="" type="checkbox"/> FEE <input type="checkbox"/></p>
<p>2. Name of Operator Chevron Midcontinent, LP</p>		<p>6. State Oil & Gas Lease No.</p>
<p>3. Address of Operator 6301 DEAUVILLE BLVD., MIDLAND, TX 79706</p>		<p>7. Lease Name or Unit Agreement Name West Lovington Unit</p>
<p>4. Well Location Unit Letter <u>G</u> : <u>1335</u> feet from the <u>North</u> line and <u>1335</u> feet from the <u>East</u> line Section <u>7</u> Township <u>17S</u> Range <u>36E</u> NMPM County <u>Lea</u></p>		<p>8. Well Number: 89</p>
<p>11. Elevation (Show whether DR, RKB, RT, GR, etc.) 3,901' GL, 3,917' KB</p>		<p>9. OGRID Number 4223 211333</p>
<p>10. Pool name or Wildcat Lovington; Upper San Andres</p>		

12. Check Appropriate Box to Indicate Nature of Notice, Report or Other Data

NOTICE OF INTENTION TO:

PERFORM REMEDIAL WORK ☐ PLUG AND ABANDON ☒
TEMPORARILY ABANDON ☐ CHANGE PLANS ☐
PULL OR ALTER CASING ☐ MULTIPLE COMPL ☐
DOWNHOLE COMMINGLE ☐

SUBSEQUENT REPORT OF:

REMEDIAL WORK ☐ ALTERING CASING ☐
COMMENCE DRILLING OPNS. ☐ P AND A ☐
CASING/CEMENT JOB ☐

OTHER: ☐

OTHER: TEMPORARILY ABANDON ☐

13. Describe proposed or completed operations. (Clearly state all pertinent details, and give pertinent dates, including estimated date of starting any proposed work). SEE RULE 19.15.7.14 NMAC. For Multiple Completions: Attach wellbore diagram of proposed completion or recompletion. 8-5/8" @ 1,315' TOC Surface, 5-1/2" @ 5,230' TOC Surface, Perforations: 4,778'-5,133', CIBP set at 4,700' w/ 35' cmt cap.

Chevron USA INC respectfully request to abandon this well as follows:

1. Call and notify NMOCD 24 hrs before operations begin.
2. MIRU CTU, check well pressures, perform bubble test on surface casing annuli, if bubble test fails Chevron intends to Zonite the well after it is plugged to a certain point agreed upon by the NMOCD and Chevron.
3. Pressure test casing to 500 psi f/ 10 min.
4. TIH w/ coil tubing and tag CIBP cmt cap at 4,665' , spot enough MLF t/ allow it to be between cement plugs, and spot 30 sx CL "C" cmt f/ 4,665' t/ 4,369' , WOC & tag only if casing does not pressure test.
5. Spot 25 sx CL "C" cmt f/ 3,850' t/ 3,604' (Queen).
6. Spot 55 sx CL "C" cmt f/ 3,430' t/ 2,887' (7 Rivers, Yates, B.Salt). spot 25 sx CL "C" cmt f/ 2000 t/ 1750 (T. Salt)
7. Spot 140 sx CL "C" cmt f/ 1,365' t/ Surface. Perform as running plug with coil tubing, keeping the end of the coil tubing 100' in the cement. If pump time exceeds 1 hour, pull end of coil t/ TOC to prevent sticking (Shoe, FW, Surf).
8. Cut all casings & anchors & remove 3' below grade. Verify cement to surface & weld on dry hole marker. Clean location.

Note: All cement plugs class "C" (<6,500') or "H" (>6,500') with closed loop system used.

I hereby certify that the information above is true and complete to the best of my knowledge and belief.

SIGNATURE Howie Lucas TITLE P&A Engineer, Attorney in fact DATE 12/31/18

Type or print name Howie Lucas E-mail address: howie.lucas@chevron.com PHONE: (832)-588-4044

For State Use Only

APPROVED BY: Kerry Fortner TITLE Compliance Officer A DATE 1-7-19
Conditions of Approval (if any):

See Attached
Conditions of Approval

WLU 89 WELLBORE DIAGRAM

Created: 08/07/13 By: TPQJ
 Updated: 12/31/18 By: H Lucas
 Lease: West Lovington Unit
 Field: West Lovington
 Surf. Loc.: 1335' FNL & 1335' FEL
 Bot. Loc.:
 County: Lea St.: NM
 Status: TA'd Oil Producer

Well #: 89 St. Lse:
 API: 30-025-31454
 Unit Ltr.: G Section: 7
 TSHP/Rng: 17S / 36E
 Unit Ltr.: Section:
 TSHP/Rng:
 Directions: Lovington, NM
 Chevno: OS6086

Surface Casing

Size: 8-5/8"
 Wt., Grd.: 24# J-55
 Depth: 1315'
 Sxs Cmt: 500sx CI C
 Circulate: Yes
 TOC: Surface
 Hole Size: 12-1/4"

KB: 3917'
 DF:
 GL: 3901'
 Ini. Spud: 04/04/92
 TD Date: 04/10/92
 Ini. Comp.: 05/07/92

Log Formation Tops	
Anhy	1933
Salt	2032
Base Salt	3027
Yates	3078
Seven Rivers	3380
Queen	3800
Grayburg	4512
San Andres	4700

From WLU 73
 From WLU 73
 From WLU 73
 From WLU 73

Well History:

4/4/92 Spud well.

5/7/92 Comp well. Initial stim f/ 4778-5133' w/ 14,000 gals 20% NEFE SGA acid w/ 40 tons CO2.

9/17/14 Set CIBP @ 4,700' and cap w/ 35' cmt. Well TA'd. Had difficulty testing casing at first because of flange leakage.

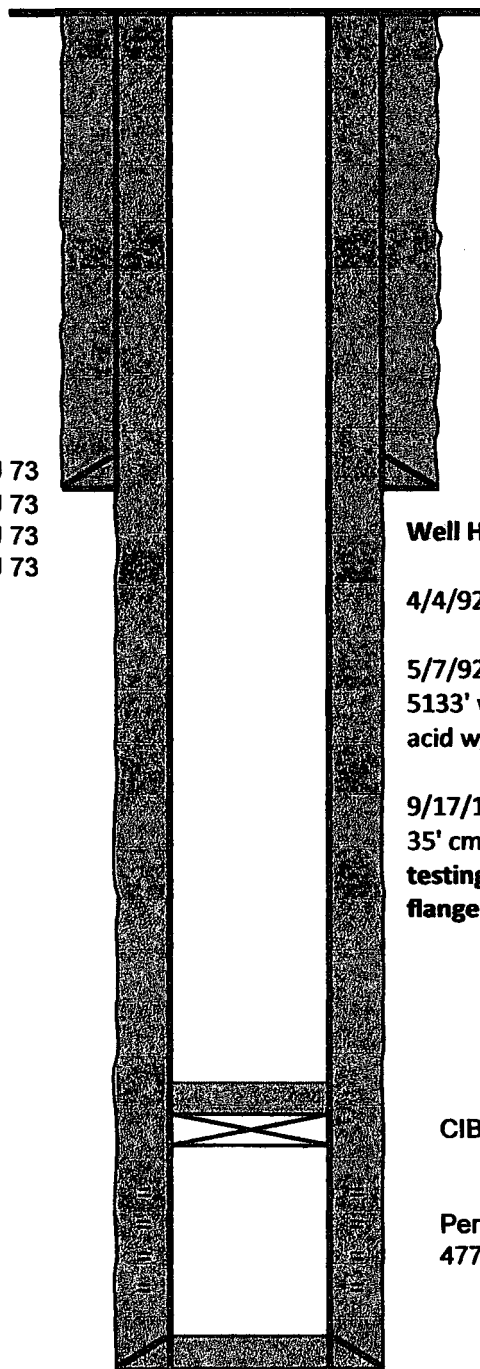
CIBP @ 4,700' w/ 35' cmt on top

Perforations
 4778' - 5133'

Production Casing

Size: 5-1/2"
 Wt., Grd.: 15.5# J-55
 Depth: 5230'
 Sxs Cmt: 1350sx CI C
 Circulate: Yes
 TOC: Surface
 Hole Size: 7-7/8"

PBTD: 5,183
 TD: 5,230



WLU 89 WELLBORE DIAGRAM

Created: 08/07/13 By: TPQJ
 Updated: 12/31/18 By: H Lucas
 Lease: West Lovington Unit
 Field: West Lovington
 Surf. Loc.: 1335' FNL & 1335' FEL
 Bot. Loc.:
 County: Lea St.: NM
 Status: TA'd Oil Producer

Well #: 89 St. Lse:
 API: 30-025-31454
 Unit Ltr.: G Section: 7
 TSHR/Rng: 17S / 36E
 Unit Ltr.: Section:
 TSHR/Rng:
 Directions: Lovington, NM
 Chevno: OS6086

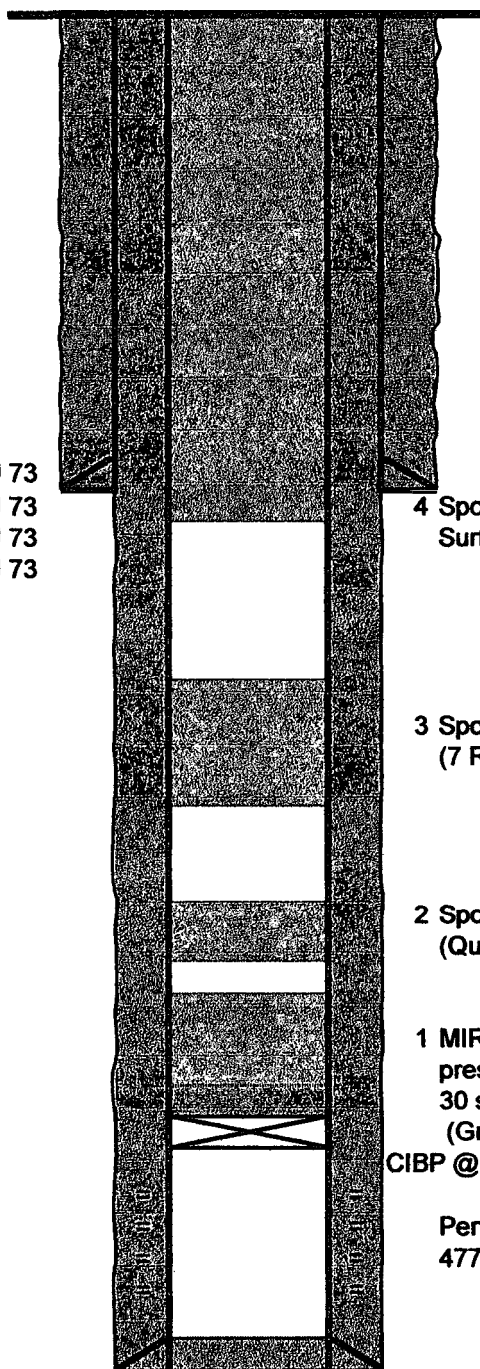
Surface Casing

Size: 8-5/8"
 Wt., Grd.: 24# J-55
 Depth: 1315'
 Sxs Cmt: 500sx CI C
 Circulate: Yes
 TOC: Surface
 Hole Size: 12-1/4"

KB: 3917'
 DF:
 GL: 3901'
 Ini. Spud: 04/04/92
 TD Date: 04/10/92
 Ini. Comp.: 05/07/92

Log Formation Tops	
Anhy	1933
Salt	2032
Base Salt	3027
Yates	3078
Seven Rivers	3380
Queen	3800
Grayburg	4512
San Andres	4700

From WLU 73
 From WLU 73
 From WLU 73
 From WLU 73



4 Spot 140 sx CL "C" cmt f/ 1365' t/ Surface (Surf, FW, Shoe)

3 Spot 55 sx CL "C" cmt f/ 3430' t/ 2887' (7 Rivers, Yates, B.Salt)

2 Spot 25 sx CL "C" cmt f/ 3850' t/ 3604' (Queen)

1 MIRU CTU, TIH and tag at 4665', pressure test csg t/ 500 psi, spot 30 sx CL "C" cmt f/ 4665' t/ 4369' (Grayburg)

CIBP @ 4,700' w/ 35' cmt on top

Perforations
 4778' - 5133'

Production Casing

Size: 5-1/2"
 Wt., Grd.: 15.5# J-55
 Depth: 5230'
 Sxs Cmt: 1350sx CI C
 Circulate: Yes
 TOC: Surface
 Hole Size: 7-7/8"

PBTD: 5,183
 TD: 5,230

GENERAL CONDITIONS OF APPROVAL:

- 1) Insure all bradenheads have been exposed, identified, and valves are operational prior to rigging up on well.
- 2) Contact the appropriate NMOCD District Office no later than 24 hours prior to moving in and rigging up.
- 3) A copy of the approved C103 intent to P&A should be distributed to the onsite company and plugging representatives. Approved procedures are good for a period of one year from approved date, unless otherwise specified on the C103 intent. Approvals past this date will require the submission and approval of a new C103 intent.
- 4) A company representative is required to be present to witness all operations including setting CIBP's, circulation of mud laden fluids, perforating, squeezing or spotting cement plugs, tags, or any other operations approved on the C103 intent to P&A. Company representative should contact the NMOCD and report all operations.
- 5) Any changes that may be required during plugging operations should be approved by the NMOCD before proceeding.
- 6) A closed loop system is to be used for all plugging operations. Contents of the steel pits to be hauled to a NMOCD permitted disposal facility.
- 7) Mud laden fluids must be placed between all cement plugs mixed at 25 sacks of salt gel per 100 barrels of brine.
- 8) All cement plugs will be 100' or 25 sacks cement, whichever is greater. Class 'C' cement will be used above 7500' and Class 'H' below 7500'.