

DISTRICT I
1625 N. French Dr., Hobbs, NM 88240
Phone: (575) 393-6161 Fax: (575) 393-0720
DISTRICT II
811 S. First St., Artesia, NM 88210
Phone: (575) 748-1283 Fax: (575) 748-9720
DISTRICT III
1000 Rio Brazos Road, Aztec, NM 87410
Phone: (505) 334-6178 Fax: (505) 334-6170
DISTRICT IV
1220 S. St. Francis Dr., Santa Fe, NM 87505
Phone: (505) 476-3460 Fax: (505) 476-3462

State of New Mexico
Energy, Minerals & Natural Resources Department
OIL CONSERVATION DIVISION
1220 South St. Francis Dr.
Santa Fe, New Mexico 87505

HOBBS OCD

JAN 16 2019

RECEIVED

Form C-102

Revised August 1, 2011

Submit one copy to appropriate District Office

☐ AMENDED REPORT

WELL LOCATION AND ACREAGE DEDICATION PLAT

API Number 30-025- 45510	Pool Code 2209 98259	Pool Name ANTelope RIDGE, BONE SPRING, WEST
Property Code 316707	Property Name BELL LAKE UNIT NORTH	Well Number 211H
OGRID No. 12361	Operator Name KAISER-FRANCIS OIL COMPANY	Elevation 3528'

Surface Location

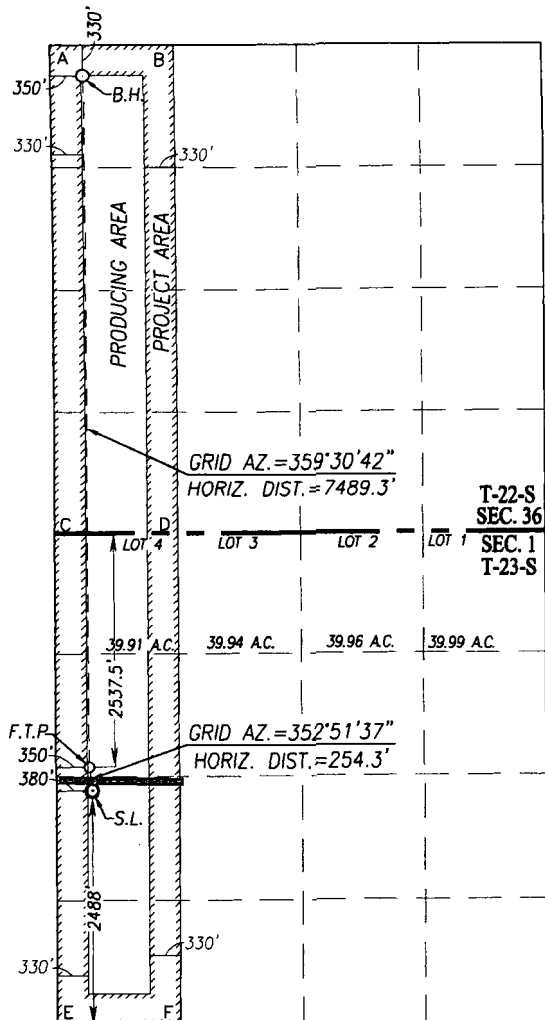
UL or lot No.	Section	Township	Range	Lot Idn	Feet from the	North/South line	Feet from the	East/West line	County
L	1	23-S	33-E	L	2488	SOUTH	380	WEST	LEA

Bottom Hole Location If Different From Surface

UL or lot No.	Section	Township	Range	Lot Idn	Feet from the	North/South line	Feet from the	East/West line	County
D	36	22-S	33-E	D	330	NORTH	350	WEST	LEA

Dedicated Acres 239.91	Joint or Infill	Consolidation Code	Order No.
----------------------------------	-----------------	--------------------	-----------

NO ALLOWABLE WILL BE ASSIGNED TO THIS COMPLETION UNTIL ALL INTERESTS HAVE BEEN CONSOLIDATED OR A NON-STANDARD UNIT HAS BEEN APPROVED BY THE DIVISION



SCALE: 1"=2000'

BOTTOM HOLE LOCATION
NAD 83 NME
Y= 493637.2 N
X= 788318.7 E
LAT.=32.354543° N
LONG.=103.533507° W

BOTTOM HOLE LOCATION
NAD 27 NME
Y= 493577.0 N
X= 747135.7 E
LAT.=32.354419° N
LONG.=103.533025° W

CORNER COORDINATES TABLE

NAD 27 NME
A - Y= 493905.1 N, X= 746782.0 E
B - Y= 493912.0 N, X= 748106.3 E
C - Y= 488624.8 N, X= 746833.9 E
D - Y= 488631.4 N, X= 748154.4 E
E - Y= 483348.0 N, X= 746866.4 E
F - Y= 483354.2 N, X= 748188.1 E

CORNER COORDINATES TABLE

NAD 83 NME
A - Y= 493965.3 N, X= 787964.9 E
B - Y= 493972.2 N, X= 789289.2 E
C - Y= 488684.8 N, X= 788016.9 E
D - Y= 488691.4 N, X= 789337.5 E
E - Y= 483407.9 N, X= 788049.6 E
F - Y= 483414.1 N, X= 789371.3 E

FIRST TAKE POINT
NAD 83 NME
Y= 486149.5 N
X= 788382.6 E
LAT.=32.333961° N
LONG.=103.533481° W

FIRST TAKE POINT
NAD 27 NME
Y= 486089.6 N
X= 747199.4 E
LAT.=32.333838° N
LONG.=103.533000° W

GEODETIC COORDINATES
NAD 83 NME
SURFACE LOCATION
Y= 485897.3 N
X= 788414.2 E
LAT.=32.333267° N
LONG.=103.533385° W

GEODETIC COORDINATES
NAD 27 NME
SURFACE LOCATION
Y= 485837.4 N
X= 747231.0 E
LAT.=32.333144° N
LONG.=103.532904° W

OPERATOR CERTIFICATION

I hereby certify that the information herein is true and complete to the best of my knowledge and belief, and that this organization either owns a working interest or unleased mineral interest in the land including the proposed bottom hole location or has a right to drill this well at this location pursuant to a contract with an owner of such mineral or working interest, or to a voluntary pooling agreement or a compulsory pooling order heretofore entered by the division.

Melanie J. Wilson 10/30/2017
Signature Date

Melanie J Wilson

Printed Name

mjp1692@gmail.com

E-mail Address

SURVEYOR CERTIFICATION

I hereby certify that the well location shown on this plat was plotted from field notes of actual surveys made by me or under my supervision, and that the same is true and correct to the best of my belief.

JUL 21, 2017

Date of Survey
Signature of Professional Surveyor:

RONALD J. EIDSON
NEW MEXICO
REGISTERED SURVEYOR
3239
Certificate Number Gary G. Eidson 12641
Ronald J. Eidson 3239

ACK REL. W.O.:17110402 JWSC W.O.: 17.11.0734