

District I
1625 N. French Dr., Hobbs, NM 88240
Phone: (575) 393-6161 Fax: (575) 393-0720
District II
811 S. First St., Artesia, NM 88210
Phone: (575) 748-1283 Fax: (575) 748-9720
District III
1000 Rio Brazos Road, Aztec, NM 87410
Phone: (505) 334-6178 Fax: (505) 334-6170
District IV
1220 S. St. Francis Dr., Santa Fe, NM 87505
Phone: (505) 476-3460 Fax: (505) 476-3462

State of New Mexico
Energy, Minerals & Natural Resources
Department
OIL CONSERVATION DIVISION
1220 South St. Francis Dr.
Santa Fe, NM 87505

FORM C-102

Revised August 1, 2011

Submit one copy to appropriate

District Office

☐ AMENDED REPORT

WELL LOCATION AND ACREAGE DEDICATION PLAT

¹ API Number 30-025- 45047	² Pool Code 98180	³ Pool Name WC-025 G-09 S253309A; Upper Wolfcamp
⁴ Property Code 322220	⁵ Property Name AUDACIOUS 19 FEDERAL	
⁶ Well Number #711H	⁷ Operator Name EOG RESOURCES, INC.	
⁸ OGRID No. 7377	⁹ Elevation 3462'	

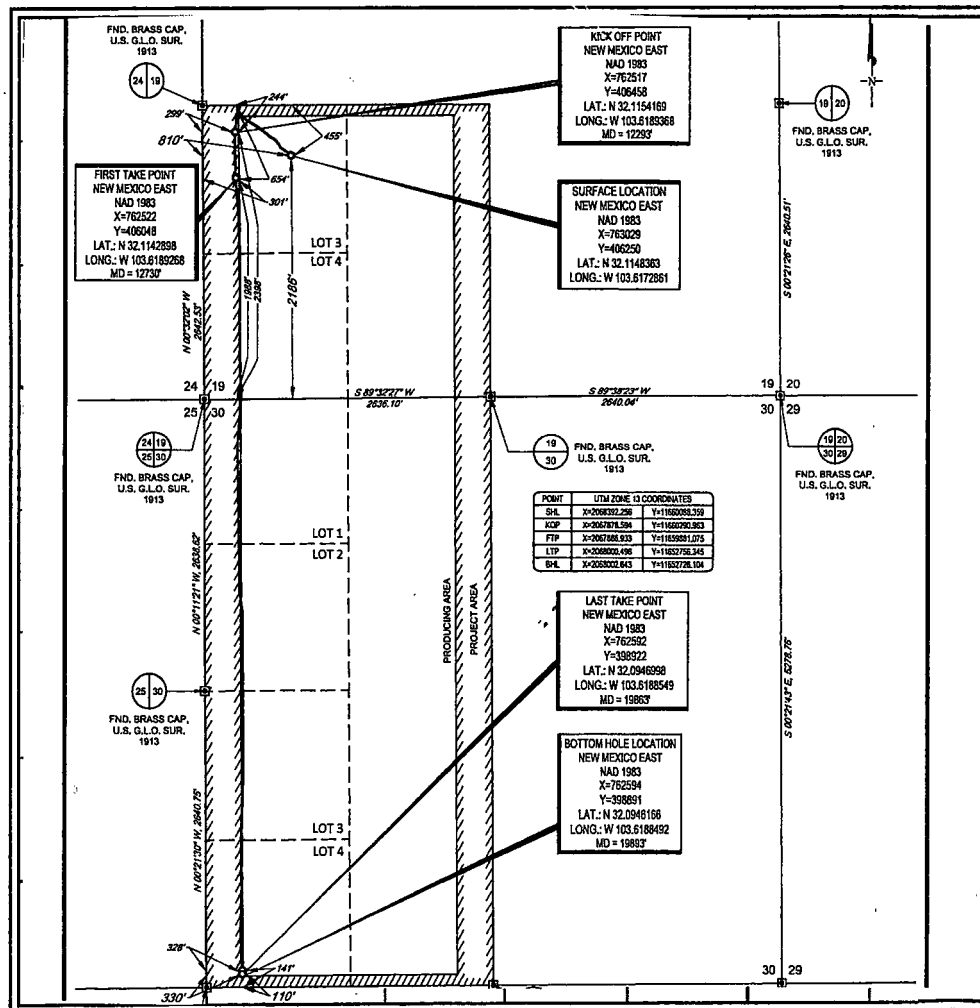
¹⁰Surface Location

UL or lot no.	Section	Township	Range	Lot Idn	Feet from the	North/South line	Feet from the	East/West line	County
L	19	25-S	33-E	-	2186'	SOUTH	811'	WEST	LEA

UL or lot no.	Section	Township	Range	Lot Idn	Feet from the	North/South line	Feet from the	East/West line	County
m	30	25-S	33-E	-	110'	SOUTH	330'	WEST	LEA

¹² Dedicated Acres 240.76	¹³ Joint or Infill	¹⁴ Consolidation Code	¹⁵ Order No.
--	-------------------------------	----------------------------------	-------------------------

No allowable will be assigned to this completion until all interests have been consolidated or a non-standard unit has been approved by the division.



¹⁷OPERATOR CERTIFICATION

I hereby certify that the information contained herein is true and complete to the best of my knowledge and belief, and that this organization either owns a working interest or unleased mineral interest in the land including the proposed bottom hole location or has a right to drill this well at this location pursuant to a contract with an owner of such a mineral or working interest, or to a voluntary pooling agreement or a compulsory pooling order heretofore entered by the division.

Kay Maddox 1/7/2019
Signature Date

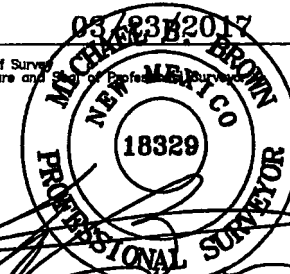
KAY MADDOX
Printed Name

E-mail Address

¹⁸SURVEYOR CERTIFICATION

I hereby certify that the well location shown on this plat was plotted from field notes of actual surveys made by me or under my supervision, and that the same is true to the best of my belief.

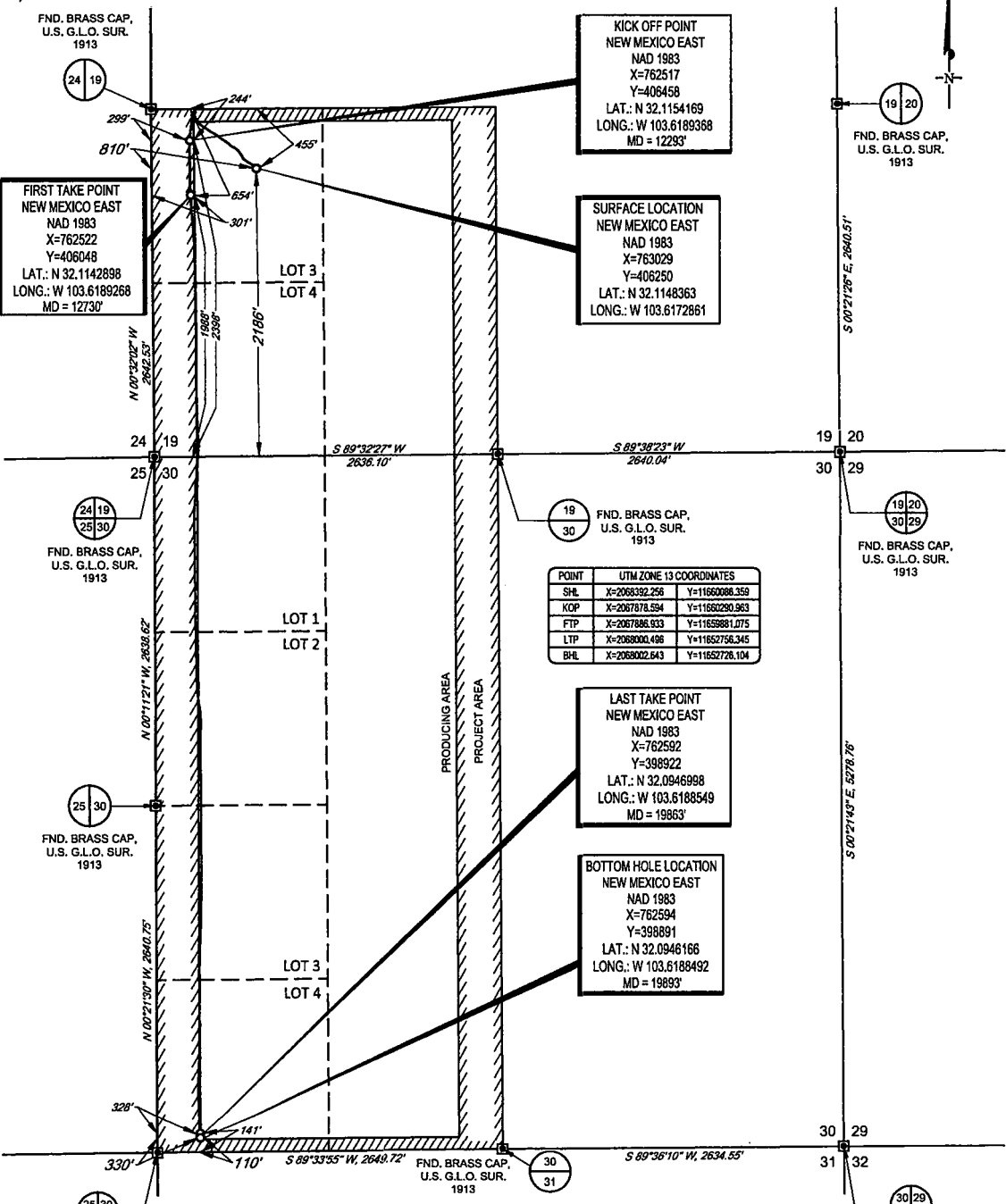
Date of Survey
Signature and Seal of Professional Surveyor



Certificate Number

SCALE: 1" = 1000'

SECTION 19, TOWNSHIP 25-S, RANGE 33-E, N.M.P.M.
LEA COUNTY, NEW MEXICO



KICK OFF POINT
NEW MEXICO EAST
NAD 1983
X=762517
Y=408458
LAT.: N 32.1154169
LONG.: W 103.6189368
MD = 12293'

FIRST TAKE POINT
NEW MEXICO EAST
NAD 1983
X=762522
Y=408048
LAT.: N 32.1142898
LONG.: W 103.6189268
MD = 12730'

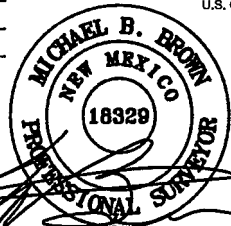
SURFACE LOCATION
NEW MEXICO EAST
NAD 1983
X=763029
Y=406250
LAT.: N 32.1148363
LONG.: W 103.6172861

POINT	UTM ZONE 13 COORDINATES
SHL	X=2068392.256 Y=11650088.350
KOP	X=2067878.594 Y=11650290.963
FTP	X=2067886.933 Y=11659881.075
LTP	X=2068000.498 Y=11652756.345
BHL	X=2068002.643 Y=11652726.104

LAST TAKE POINT
NEW MEXICO EAST
NAD 1983
X=762592
Y=398922
LAT.: N 32.0946998
LONG.: W 103.6188549
MD = 19863'

BOTTOM HOLE LOCATION
NEW MEXICO EAST
NAD 1983
X=762594
Y=398891
LAT.: N 32.0946166
LONG.: W 103.6188492
MD = 19893'

LEASE NAME & WELL NO.: AUDACIOUS 19 FED COM 711H
SECTION 19 TWP 25-S RGE 33-E SURVEY N.M.P.M.
COUNTY LEA STATE NM ELEVATION 3462'
DESCRIPTION 2186' FSL & 810' FWL



Michael Blake Brown, P.S. No. 18329
DECEMBER 26, 2018



TOPOGRAPHIC
LOYALTY INNOVATION LEGACY

1400 EVERMAN PARKWAY, Ste. 146 • FT. WORTH, TEXAS 76140
TELEPHONE: (817) 744-7512 • FAX (817) 744-7554
2903 NORTH BIG SPRING • MIDLAND, TEXAS 79705
TELEPHONE: (432) 682-1653 OR (800) 787-1653 • FAX (432) 682-1743
WWW.TOPOGRAPHIC.COM

Geog resources, Inc.

AUDACIOUS 19 FED COM 711H AS-COMPLETED	REVISION:
DATE: 12/26/2018	
FILE: AD_AUDACIOUS_19_FED_COM_711H	
DRAWN BY: H.B.	
SHEET: 1 OF 1	

NOTES:
1. ORIGINAL DOCUMENT SIZE: 8.5" X 11"
2. ALL BEARINGS, DISTANCES, AND COORDINATE VALUES CONTAINED HEREIN ARE GRID BASED UPON THE NEW MEXICO COORDINATE SYSTEM OF 1983, EAST ZONE, U.S. SURVEY FEET.
3. THIS WELL LOCATION SHOWN HEREON HAS BEEN SURVEYED ON THE GROUND UNDER MY SUPERVISION AND PREPARED ACCORDING TO THE EVIDENCE FOUND AT THE TIME OF SURVEY, AND DATA PROVIDED BY EOG RESOURCES, INC. THIS CERTIFICATION IS MADE AND LIMITED TO THOSE PERSONS OR ENTITIES SHOWN ON THE FACE OF THIS PLAT AND IS NON-TRANSFERABLE. THIS SURVEY IS CERTIFIED FOR THIS TRANSACTION ONLY.