

DISTRICT I
1625 N. French Dr., Hobbs, NM 88240
Phone: (575) 393-6161 Fax: (575) 393-0720

DISTRICT II
811 S. First St., Artesia, NM 88210
Phone: (575) 748-1283 Fax: (575) 748-9720

DISTRICT III
1000 Rio Brazos Road, Aztec, NM 87410
Phone: (505) 334-6178 Fax: (505) 334-6170

DISTRICT IV
1220 S. St. Francis Dr., Santa Fe, NM 87505
Phone: (505) 476-3460 Fax: (505) 476-3462

State of New Mexico
Energy, Minerals & Natural Resources Department

OIL CONSERVATION DIVISION
1220 South St. Francis Dr.
Santa Fe, New Mexico 87505

HOBBS OCD
JAN 16 2019
RECEIVED

Form C-102
Revised August 1, 2011
Submit one copy to appropriate
District Office

AMENDED REPORT

WELL LOCATION AND ACREAGE DEDICATION PLAT

API Number 30-025- 45521	Pool Code 2209- 98264	Well Name BELL LAKE, BS, SOUTH
Property Code 316706	Property Name BELL LAKE UNIT SOUTH	Well Number 401H
OGRID No. 12361	Operator Name KAISER-FRANCIS OIL COMPANY	Elevation 3632'

Surface Location

UL or lot No.	Section	Township	Range	Lot Idn	Feet from the	North/South line	Feet from the	East/West line	County
E	1	24-S	33-E		2050	NORTH	295	WEST	LEA

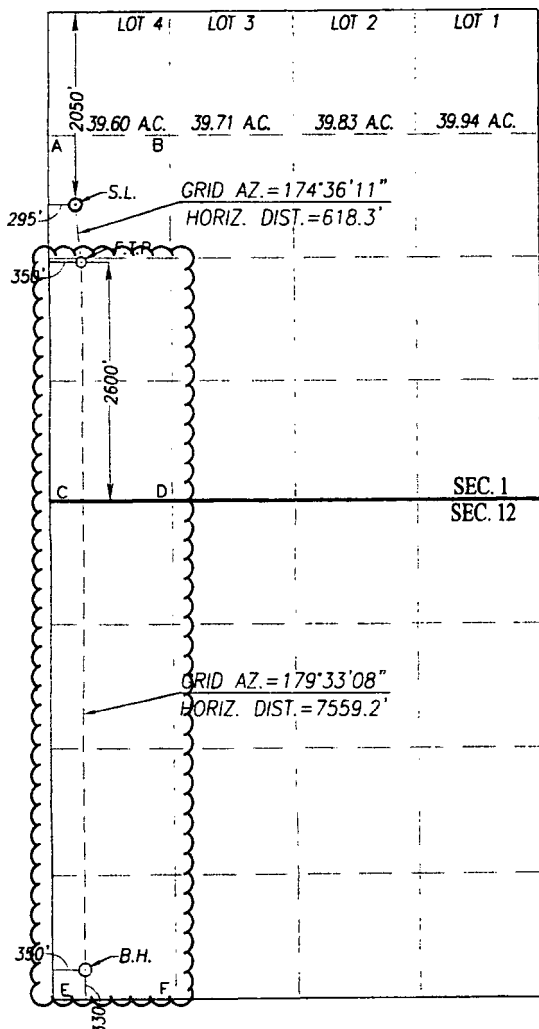
Bottom Hole Location If Different From Surface

UL or lot No.	Section	Township	Range	Lot Idn	Feet from the	North/South line	Feet from the	East/West line	County
M	12	24-S	33-E		330	SOUTH	350	WEST	LEA

Dedicated Acres 240	Joint or Infill	Consolidation Code	Order No.
-------------------------------	-----------------	--------------------	-----------

NO ALLOWABLE WILL BE ASSIGNED TO THIS COMPLETION UNTIL ALL INTERESTS HAVE BEEN CONSOLIDATED OR A NON-STANDARD UNIT HAS BEEN APPROVED BY THE DIVISION

SCALE: 1"=2000'



SURFACE LOCATION
NAD 83 NME
Y= 454958.7 N
X= 788561.2 E
LAT.=32.248226° N
LONG.=103.533656° W

SURFACE LOCATION
NAD 27 NME
Y= 454899.7 N
X= 747377.4 E
LAT.=32.248102° N
LONG.=103.533177° W

FIRST TAKE POINT
NAD 83 NME
Y= 454343.2 N
X= 788619.4 E
LAT.=32.246533° N
LONG.=103.533483° W

FIRST TAKE POINT
NAD 27 NME
Y= 454284.2 N
X= 747435.5 E
LAT.=32.246409° N
LONG.=103.533004° W

CORNER COORDINATES TABLE

NAD 27 NME
A - Y= 455642.8 N, X= 747078.6 E
B - Y= 455647.2 N, X= 748398.9 E
C - Y= 451683.5 N, X= 747099.7 E
D - Y= 451688.5 N, X= 748422.0 E
E - Y= 446395.1 N, X= 747147.2 E
F - Y= 446402.2 N, X= 748468.3 E

CORNER COORDINATES TABLE

NAD 83 NME
A - Y= 455701.8 N, X= 788262.4 E
B - Y= 455706.3 N, X= 789582.7 E
C - Y= 451742.4 N, X= 788283.7 E
D - Y= 451747.4 N, X= 789606.0 E
E - Y= 446453.9 N, X= 788331.4 E
F - Y= 446460.9 N, X= 789652.6 E

BOTTOM HOLE LOCATION
NAD 83 NME
Y= 446785.7 N
X= 788678.4 E
LAT.=32.225759° N
LONG.=103.533474° W

BOTTOM HOLE LOCATION
NAD 27 NME
Y= 446726.9 N
X= 747494.2 E
LAT.=32.225635° N
LONG.=103.532996° W

OPERATOR CERTIFICATION

I hereby certify that the information herein is true and complete to the best of my knowledge and belief, and that this organization either owns a working interest or unleased mineral interest in the land including the proposed bottom hole location or has a right to drill this well at this location pursuant to a contract with an owner of such mineral or working interest, or to a voluntary pooling agreement or a compulsory pooling order heretofore entered by the division.

12/6/17

Melanie J. Wilson
Signature

Date

Melanie J Wilson

Printed Name

mjp1692@gmail.com

E-mail Address

SURVEYOR CERTIFICATION

I hereby certify that the well location shown on this plat was plotted from field notes of actual surveys made by me or under my supervision, and that the same is true and correct to the best of my belief.

OCTOBER 3, 2017

Date of Survey
Signature & Seal of Professional Surveyor:

Ronald J. Eidson
NEW MEXICO
REGISTERED SURVEYOR
3239
Certificate Number 3239
Ronald J. Eidson 3239

ACK REL. W.O.:17110297 JWSC W.O.: 17.11.0955

MAKE A PAYMENT

FIND AN AGENCY

ONLINE HELP

Find Forms, Agencies...

Search

For your security, we recommend you close your browser when you complete your payment.

Payment Confirmation - Bureau of Land Management (BLM) Application for Permit to Drill (APD) Fee

Before You Begin

1 Complete Agency Form

2 Enter Payment Info

3 Review & Submit

4 Confirmation

Need Help?



Contact: BLM OC
CBS Customer
Service

Email: [Click to email](#)

Phone: (303)
236-6795

Payment Confirmation

Your payment is complete

Pay.gov Tracking ID: 266KJP3J

Agency Tracking ID: 75385060640

Form Name: Bureau of Land Management (BLM) Application for Permit to
Drill (APD) Fee

Application Name: BLM Oil and Gas Online Payment

Payment Information

Payment Type: Debit or credit card

Payment Amount: \$9,790.00

Transaction Date: 12/18/2017 05:18:24 PM EST

Payment Date: 12/18/2017

Company: KAISER-FRANCIS OIL COMPANY

APD IDs: 10400025317

Lease Numbers: NMLC063993

Well Numbers: 401H

Note: You will need your Pay.gov Tracking ID to complete your APD
transaction in AFMSS II. Please ensure you write this number down upon
completion of payment.

Account Information

Cardholder Name: GEORGE B KAISER