

DISTRICT I  
1025 N. French Dr., Hobbs, NM 88240  
Phone (505) 393-6161 Fax: (505) 393-0720

DISTRICT II  
811 S. First St., Artesia, NM 88210  
Phone (505) 746-1263 Fax: (505) 746-9720

DISTRICT III  
1000 Rio Brazos Rd., Aztec, NM 87410  
Phone (505) 834-8178 Fax: (505) 834-8170

DISTRICT IV  
1220 S. St. Francis Dr., Santa Fe, NM 87505  
Phone (505) 476-3480 Fax: (505) 476-3482

State of New Mexico  
Energy, Minerals and Natural Resources Department

**HOBBS OCD**

Form C-102  
Revised August 1, 2011

Submit one copy to appropriate  
District Office

**OIL CONSERVATION DIVISION**

1220 South St. Francis Dr.  
Santa Fe, New Mexico 87505

**RECEIVED**

**WELL LOCATION AND ACREAGE DEDICATION PLAT**

☐ AMENDED REPORT

API Number <b>30-025-45330</b>		Pool Code <b>27810</b>	Pool Name <b>GLADIOLA: SAN ANDRES</b>
Property Code <b>322826</b>	Property Name <b>TRINITY 27 FEE</b>		Well Number <b>2H</b>
OGRID No. <b>231429</b>	Operator Name <b>MANZANO LLC</b>		Elevation <b>3793'</b>

**Surface Location**

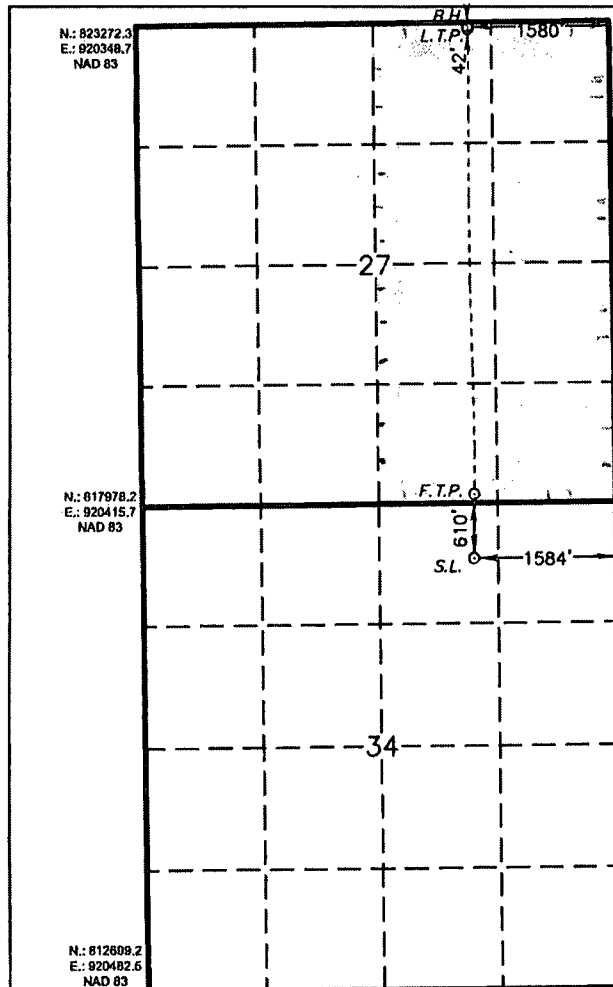
UL or lot No.	Section	Township	Range	Lot Idn	Feet from the	North/South line	Feet from the	East/West line	County
B	34	12 S	38 E		610	NORTH	1584	EAST	LEA

**Bottom Hole Location If Different From Surface**

UL or lot No.	Section	Township	Range	Lot Idn	Feet from the	North/South line	Feet from the	East/West line	County
B	27	12 S	38 E		42	NORTH	1580	EAST	LEA

Dedicated Acres <b>320</b>	Joint or Infill	Consolidation Code	Order No.
-------------------------------	-----------------	--------------------	-----------

**NO ALLOWABLE WILL BE ASSIGNED TO THIS COMPLETION UNTIL ALL INTERESTS HAVE BEEN CONSOLIDATED  
OR A NON-STANDARD UNIT HAS BEEN APPROVED BY THE DIVISION**



**PROPOSED BOTTOM  
HOLE LOCATION**

Lat - N 33.256850°  
Long - W 103.081411°  
NMSPCE- N 823280.3  
E 924044.0  
(NAD-83)

**LAST TAKE POINT  
100' FNL & 1580' FEL**

Lat - N 33.256771°  
Long - W 103.081409°  
NMSPCE- N 823251.3  
E 924044.8  
(NAD-83)

**FIRST TAKE POINT  
100' FSL & 1572' FEL**

Lat - N 33.242689°  
Long - W 103.081374°  
NMSPCE- N 818127.6  
E 924116.8  
(NAD-83)

**SURFACE LOCATION**

Lat - N 33.240739°  
Long - W 103.081410°  
NMSPCE- N 817417.9  
E 924114.4  
(NAD-83)

**OPERATOR CERTIFICATION**

I hereby certify that the information contained herein is true and complete to the best of my knowledge and belief, and that this organization either owns a working interest or unleased mineral interest in the land including the proposed bottom hole location or has a right to drill this well at this location pursuant to a contract with an owner of such a mineral or working interest, or to a voluntary pooling agreement or a compulsory pooling order heretofore entered by the division.

*Mike Hamilton* 2/4/19  
Signature Date

MIKE HAMILTON

Printed Name

*mike@manzanenergy.com*

Email Address

**SURVEYOR CERTIFICATION**

I hereby certify that the well location shown on this plat was plotted from field notes of actual surveys made by me or under my supervision and that the same is true and correct to the best of my belief.

FEBRUARY 4, 2019

Date Surveyed  
Signature  
Professional Surveyor

Certification No. GARY L. JONES 7977  
Professional Surveyor

0' 1000' 2000' 3000' 4000'  
SCALE: 1" = 2000'  
WO Num.: 34131