

District I  
1625 N. French Dr., Hobbs, NM 88240  
Phone: (575) 393-6161 Fax: (575) 393-0720  
District II  
811 S. First St., Artesia, NM 88210  
Phone: (575) 748-1283 Fax: (575) 748-9720  
District III  
1000 Rio Brazos Road, Aztec, NM 87410  
Phone: (505) 334-6178 Fax: (505) 334-6170  
District IV  
1220 S. St. Francis Dr., Santa Fe, NM 87505  
Phone: (505) 476-3460 Fax: (505) 476-3462

State of New Mexico  
Energy, Minerals & Natural Resources Department  
OIL CONSERVATION DIVISION  
1220 South St. Francis Dr.  
Santa Fe, NM 87505

Form C-102  
Revised August 1, 2011  
Submit one copy to appropriate  
District Office

RECEIVED  
FEB 08 2019

☐ AMENDED REPORT

WELL LOCATION AND ACREAGE DEDICATION PLAT

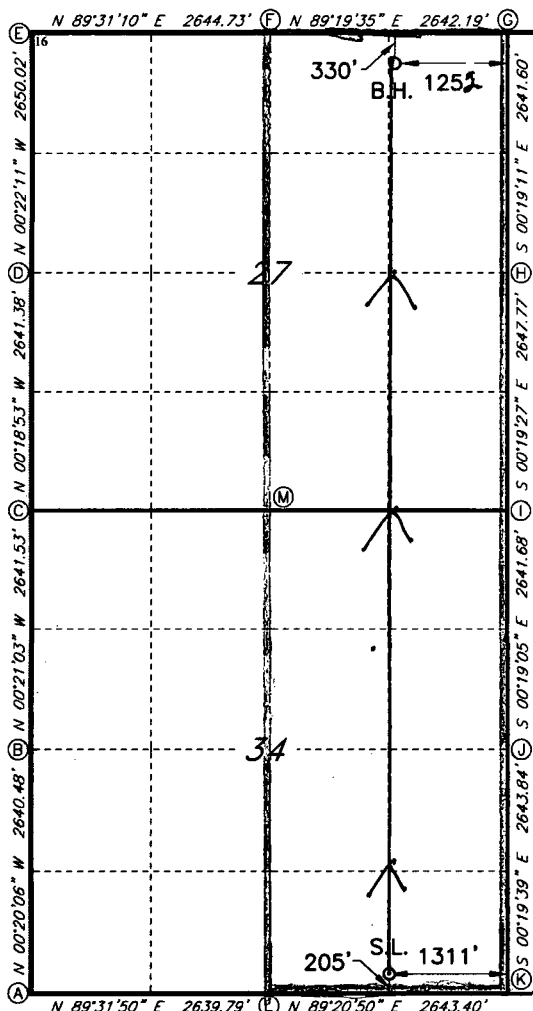
<sup>1</sup> API Number 30-025-45008		<sup>2</sup> Pool Code 98258	<sup>3</sup> Pool Name WC-025-5223203A Wolfcamp (Gas)
<sup>4</sup> Property Code 322269	<sup>5</sup> Property Name BILBREY 34/27 W2PA FED COM		<sup>6</sup> Well Number 1H
<sup>7</sup> OGRID NO. 14744	<sup>8</sup> Operator Name MEWBOURNE OIL COMPANY		<sup>9</sup> Elevation 3717'

<sup>10</sup> Surface Location									
UL or lot no. P	Section 34	Township 21S	Range 32E	Lot Idn	Feet from the 205	North/South line SOUTH	Feet From the 1311	East/West line EAST	County LEA

<sup>11</sup> Bottom Hole Location If Different From Surface									
UL or lot no. A	Section 27	Township 21S	Range 32E	Lot Idn	Feet from the 330	North/South line NORTH	Feet from the 1252	East/West line EAST	County LEA

<sup>12</sup> Dedicated Acres 640	<sup>13</sup> Joint or Infill	<sup>14</sup> Consolidation Code	<sup>15</sup> Order No.
--------------------------------------	-------------------------------	----------------------------------	-------------------------

No allowable will be assigned to this completion until all interest have been consolidated or a non-standard unit has been approved by the division.



**GEODETIC DATA**  
NAD 83 GRID - NM EAST  
**SURFACE LOCATION**  
N 520300.7 - E 749609.8  
LAT: 32.4285642° N  
LONG: 103.6583094° W  
**BOTTOM HOLE**  
N 530338.5 - E 749614.1  
LAT: 32.4561541° N  
LONG: 103.6580897° W  
**CORNER DATA**  
NAD 83 GRID - NM EAST  
A: FOUND BRASS CAP "1916"  
N 520058.9 - E 745639.6  
B: FOUND BRASS CAP "1916"  
N 522698.8 - E 745624.2  
C: FOUND BRASS CAP "1916"  
N 525339.7 - E 745608.0  
D: FOUND BRASS CAP "1916"  
N 527980.5 - E 745593.5  
E: FOUND BRASS CAP "1916"  
N 530629.8 - E 745576.4  
F: FOUND BRASS CAP "1916"  
N 530652.0 - E 748220.5  
G: FOUND BRASS CAP "1916"  
N 530683.1 - E 750861.9  
H: FOUND BRASS CAP "1916"  
N 528042.1 - E 750876.7  
I: FOUND BRASS CAP "1916"  
N 525394.9 - E 750891.6  
J: FOUND BRASS CAP "1916"  
N 522753.9 - E 750906.3  
K: FOUND BRASS CAP "1916"  
N 520110.6 - E 750921.4  
L: FOUND BRASS CAP "1916"  
N 520080.5 - E 748278.8  
M: FOUND BRASS CAP "1916"  
N 525372.6 - E 748256.7

**<sup>17</sup> OPERATOR CERTIFICATION**

I hereby certify that the information contained herein is true and complete to the best of my knowledge and belief, and that this organization either owns a working interest or unleased mineral interest in the land including the proposed bottom hole location or has a right to drill this well at this location pursuant to a contract with an owner of such a mineral or working interest, or to a voluntary pooling agreement or a compulsory pooling order heretofore entered by the division.

Signature: Jackie Lathan Date: 2/6/19  
Printed Name: Jackie Lathan

E-mail Address

**<sup>18</sup> SURVEYOR CERTIFICATION**

I hereby certify that the well location shown on this plat was plotted from field notes of actual surveys made by me or under my supervision, and that the same is true and correct to the best of my belief.

02-23-2018

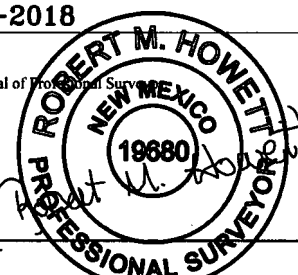
Date of Survey

Signature and Seal of Professional Surveyor

19680

Certificate Number

8/30/18 NAME-BHL



Job No.: LS1802202D