

**HOBBS OCD**

District I  
1635 N. French Dr., Hobbs, NM 88240  
Phone: (505) 393-6161 Fax: (505) 393-0720  
District II  
4111 S. First St., Artesia, NM 88210  
Phone: (505) 748-1283 Fax: (505) 748-9720  
District III  
1030 Ray Branch Road, Aztec, NM 87410  
Phone: (505) 334-6178 Fax: (505) 334-6170  
District IV  
1220 S. St. Francis Dr., Santa Fe, NM 87505  
Phone: (505) 476-3460 Fax: (505) 476-3462

**FEB 20 2018****RECEIVED**

State of New Mexico

Minerals &amp; Natural Resources Department

**OIL CONSERVATION DIVISION**

1220 South St. Francis Dr.

Santa Fe, NM 87505

Form C-102

Revised August 1, 2011

Submit one copy to appropriate

District Office

☒ **AMENDED REPORT  
AS-DRILLED**
**WELL LOCATION AND ACREAGE DEDICATION PLAT**

APT Number <b>30-025-44559</b>	Pool Code <b>96229</b>	Pool Name <b>Mesa Verde Bone Springs</b>
Property Code <b>320828</b>	Property Name <b>MESA VERDE BONE SPRING UNIT</b>	Well Number <b>22H</b>
OGRID No <b>16696</b>	Operator Name <b>OXY USA INC.</b>	Elevation <b>3568.2'</b>

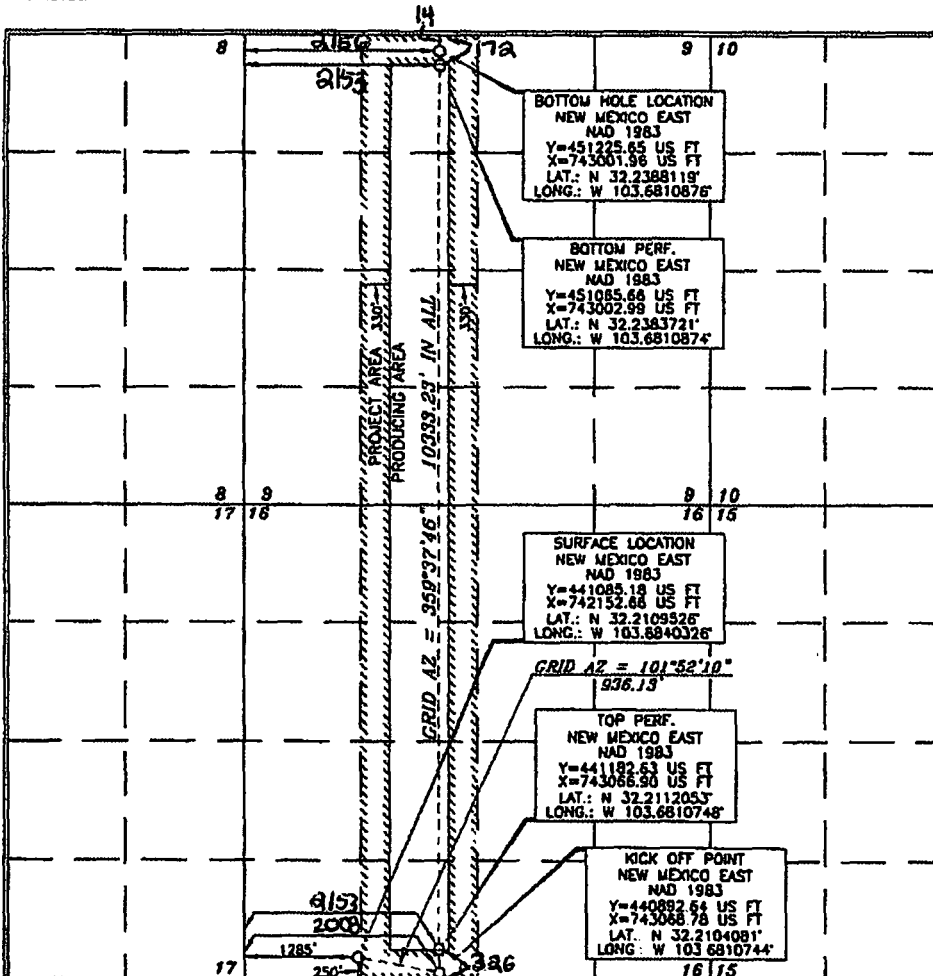
**Surface Location**

UL or lot no.	Section	Township	Range	Lot 1dn	Feet from the	North/South line	Feet from the	East/West line	County
<b>M</b>	<b>16</b>	<b>24 SOUTH</b>	<b>32 EAST, N.M.P.M.</b>		<b>250'</b>	<b>SOUTH</b>	<b>1285'</b>	<b>WEST</b>	<b>LEA</b>

**Bottom Hole Location If Different From Surface**

UL or lot no.	Section	Township	Range	Lot 1dn	Feet from the	North/South line	Feet from the	East/West line	County
<b>C</b>	<b>9</b>	<b>24 SOUTH</b>	<b>32 EAST, N.M.P.M.</b>		<b>14</b>	<b>NORTH</b>	<b>2153'</b>	<b>WEST</b>	<b>LEA</b>
Dedicated Acres <b>320</b>	Joint or Infill	Consolidation Code	Order No.	<b>TP/FTP: 326' FSL 2153' FWL</b> <b>BP/LTP: 172' FNL 2153' FWL</b>					

No allowable will be assigned to this completion until all interests have been consolidated or a non-standard unit has been approved by the division.

**OPERATOR CERTIFICATION**

I hereby certify that the information contained herein is true and complete to the best of my knowledge and belief, and that this organization either owns a working interest or leased mineral interest in the land including the proposed bottom hole location or has a right to drill this well at this location pursuant to a contract with an owner of such a mineral or working interest, or to a voluntary pooling agreement or a compulsory pooling order.

Authorized by the district:

Signature: *Leslie Reeves* Date: **11/16/18**  
**LESLIE REEVES**  
 Printed Name: **LESLIE-REEVES@OXY.COM**  
 E-mail Address:

**SURVEYOR CERTIFICATION**

I hereby certify that the well location shown on this plat was plotted from field notes of actual surveys made by me or under my personal supervision and that the same is true and correct to the best of my belief.

Signature: *Leslie Reeves* Date of Survey: **JULY 3, 2017**  
 Signature and Seal of Professional Land Surveyor  
 Certificate Number: **15079**

WOL 170703WL (NA)