

District I
1625 N. French Dr., Hobbs, NM 88240
Phone: (575) 393-6161 Fax: (575) 393-0720
District II
811 S. First St., Artesia, NM 88210
Phone: (575) 748-1283 Fax: (575) 748-9720
District III
1000 Rio Brazos Road, Aztec, NM 87410
Phone: (505) 334-6178 Fax: (505) 334-6170
District IV
1220 S. St. Francis Dr., Santa Fe, NM 87505
Phone: (505) 476-3460 Fax: (505) 476-3462

State of New Mexico
Energy, Minerals & Natural Resources Department
OIL CONSERVATION DIVISION
1220 South St. Francis Dr.
Santa Fe, NM 87505

Form C-102
Revised August 1, 2011
Submit one copy to appropriate
District Office
☐ AMENDED REPORT

FEB 22 2019
RECEIVED

WELL LOCATION AND ACREAGE DEDICATION PLAT

¹ API Number 30-025-45155	² Pool Code 97293	³ Pool Name Ojo Chiso: Bone Spring, South
⁴ Property Code 322320	⁵ Property Name AIRSTREAM 24 STATE COM	⁶ Well Number #501H
⁷ OGRID No. 372165	⁸ Operator Name CENTENNIAL RESOURCE PRODUCTION, LLC	⁹ Elevation 3498.2'

¹⁰ Surface Location

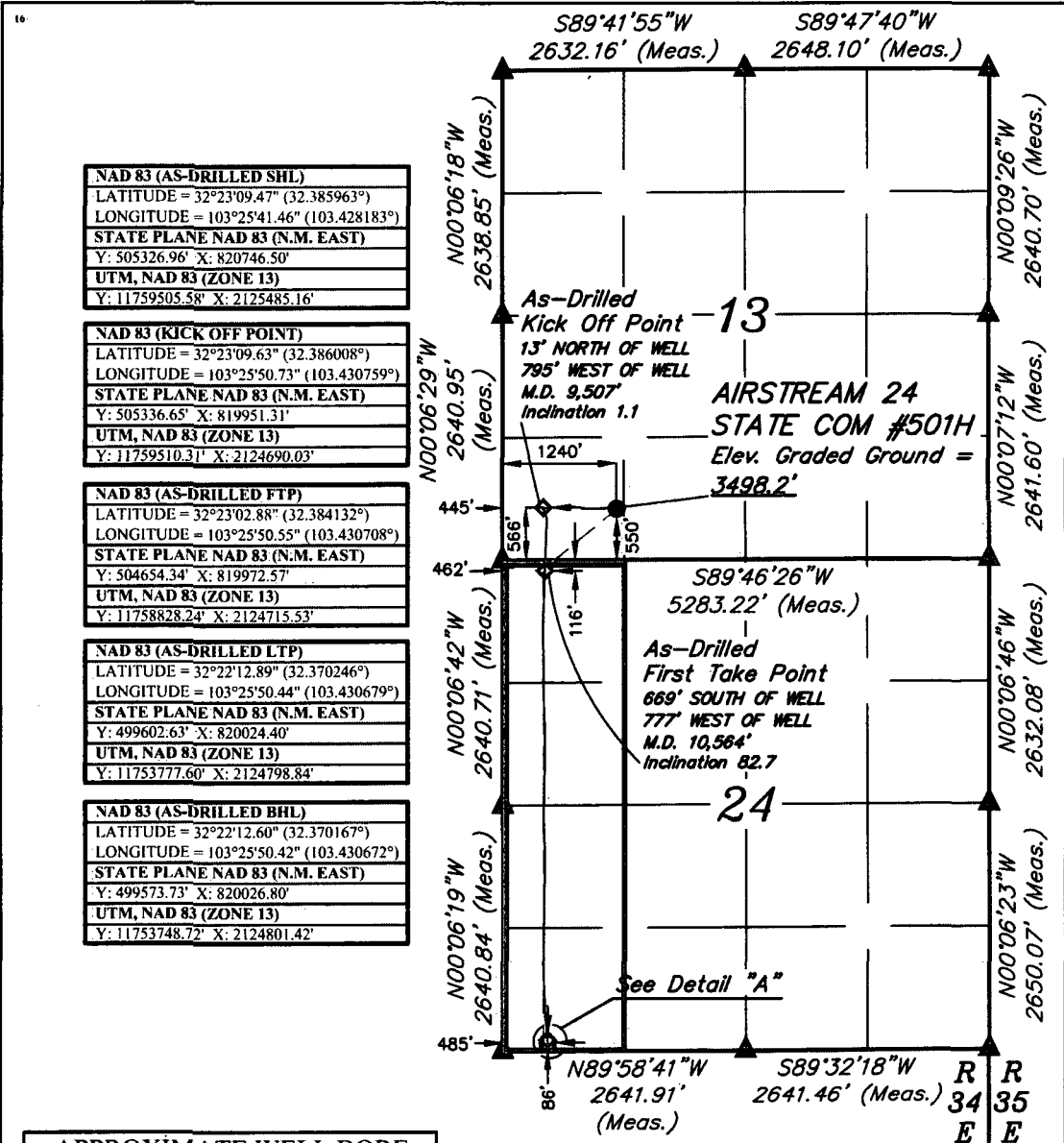
UL or lot no.	Section	Township	Range	Lot Idn	Feet from the	North/South line	Feet from the	East/West line	County
M	13	22S	34E		550	SOUTH	1240	WEST	LEA

¹¹ Bottom Hole Location If Different From Surface

UL or lot no.	Section	Township	Range	Lot Idn	Feet from the	North/South line	Feet from the	East/West line	County
M	24	22S	34E		86	SOUTH	485	WEST	LEA

¹² Dedicated Acres 160	¹³ Joint or Infill	¹⁴ Consolidation Code	¹⁵ Order No.
---	-------------------------------	----------------------------------	-------------------------

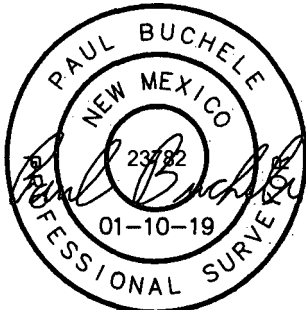
No allowable will be assigned to this completion until all interests have been consolidated or a non-standard unit has been approved by the division.



¹⁷ OPERATOR CERTIFICATION
I hereby certify that the information contained herein is true and complete to the best of my knowledge and belief, and that this organization either owns a working interest or unleased mineral interest in the land including the proposed bottom hole location or has a right to drill this well at this location pursuant to a contract with an owner of such a mineral or working interest, or to a voluntary pooling agreement or a compulsory pooling order heretofore entered by the division.
Signature: Kanicia Castillo Date: 2/14/19
Printed Name: Kanicia Castillo
E-mail Address: kanicia.castillo@cdevinc.com

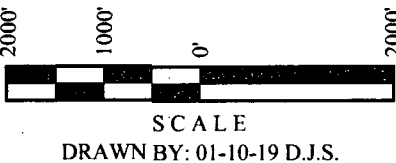
¹⁸ SURVEYOR CERTIFICATION
I hereby certify that the well location shown on this plat was plotted from field notes of actual surveys made by me or under my supervision, and that the same is true and correct to the best of my belief.
October 24, 2018

Date of Survey
Signature and Seal of Professional Surveyor:



Certificate Number:

APPROXIMATE WELL BORE DISTANCE FROM FTP TO LTP	
TOTAL	5,055.22'



NOTE:
• Distances referenced on plat to section lines are perpendicular.
• Basis of Bearing is a Transverse Mercator Projection with a Central Meridian of W103°53'00"

- = AS-DRILLED SURFACE HOLE LOCATION
- ◆ = AS-DRILLED KOP/FTP/LTP
- = AS-DRILLED BOTTOM HOLE LOCATION
- ▲ = SECTION CORNER LOCATED

